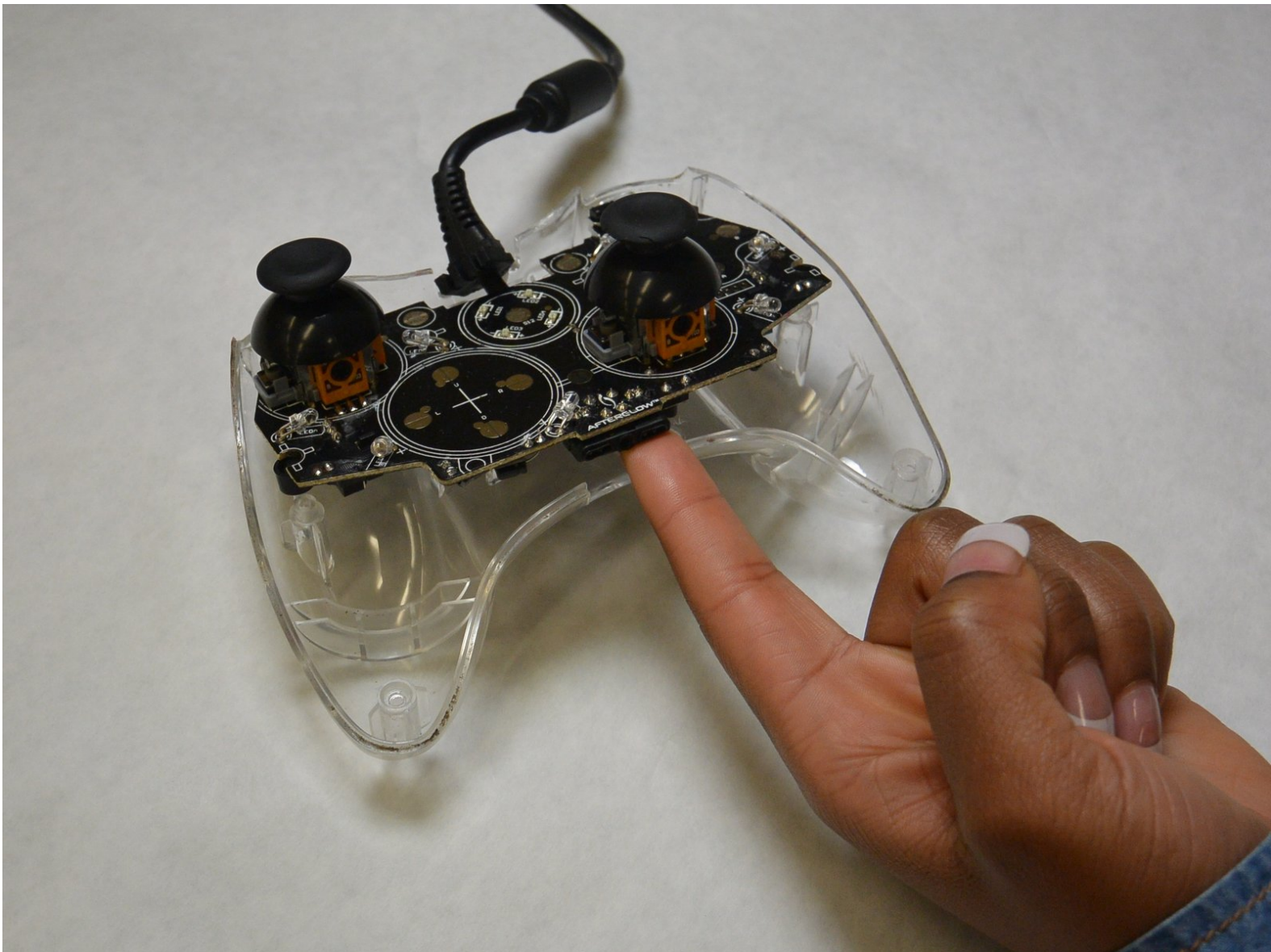




# PDP Afterglow Wired Xbox 360 Controller Cable Replacement

This guide will show you how to replace the cable on your PDP Afterglow Wired Xbox 360 Controller.

Written By: Jayson Norcross



## INTRODUCTION

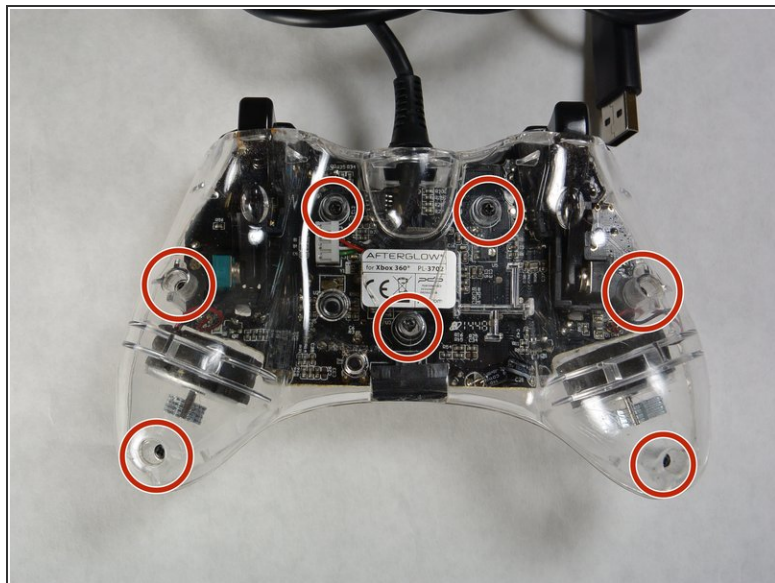
Since replacing the cable requires the use of a soldering iron, there is a risk of burning yourself or damaging the controllers logic board.

---

### TOOLS:

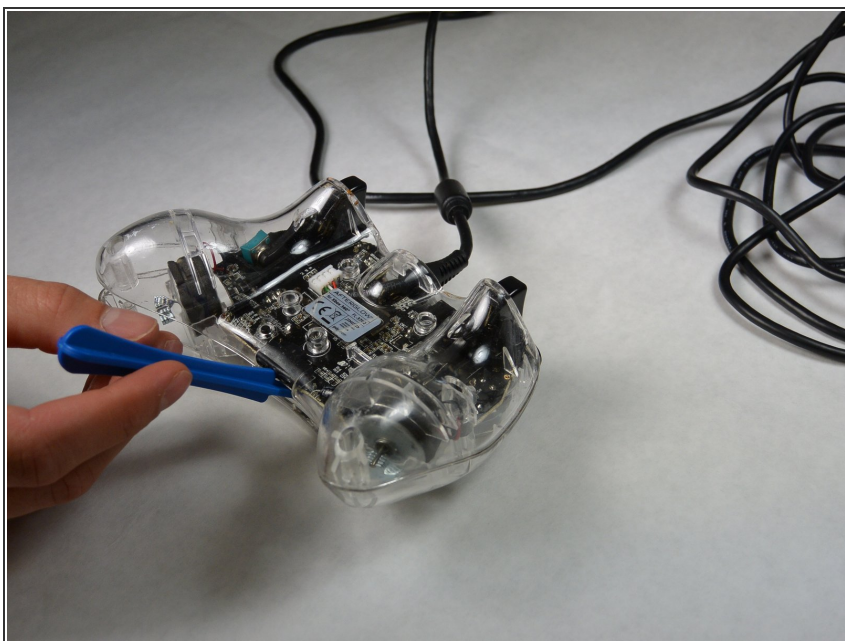
- [iFixit Opening Tools](#) (1)
  - [Screwdriver](#) (1)
  - [Solder](#) (1)
  - [Soldering Iron](#) (1)
  - [Solder Vacuum](#) (1)
-

## Step 1 — Case



- Loosen the seven 11 mm Phillips #0 screws located on the back of the controller.

## Step 2



- Using a plastic opening tool, pry the back cover from the front.
- ⓘ The covers should separate without needing a plastic opening tool, but in some cases you may need to use it.

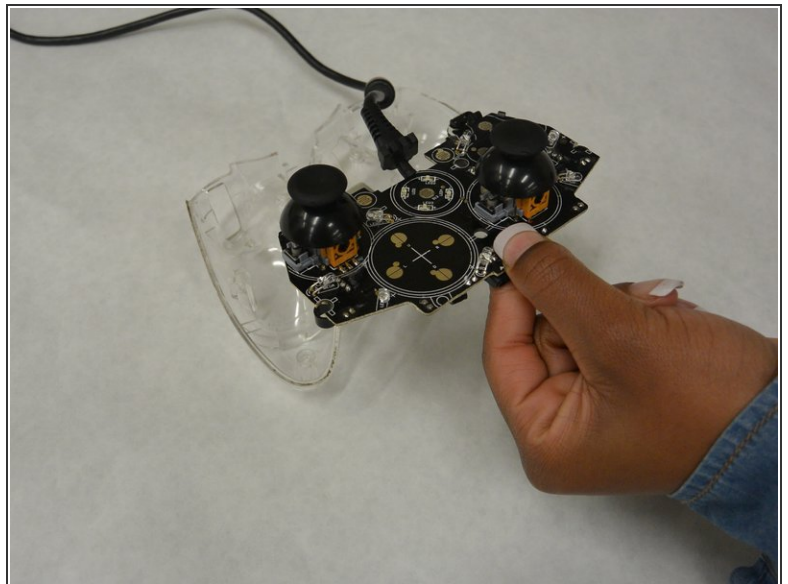


### Step 3



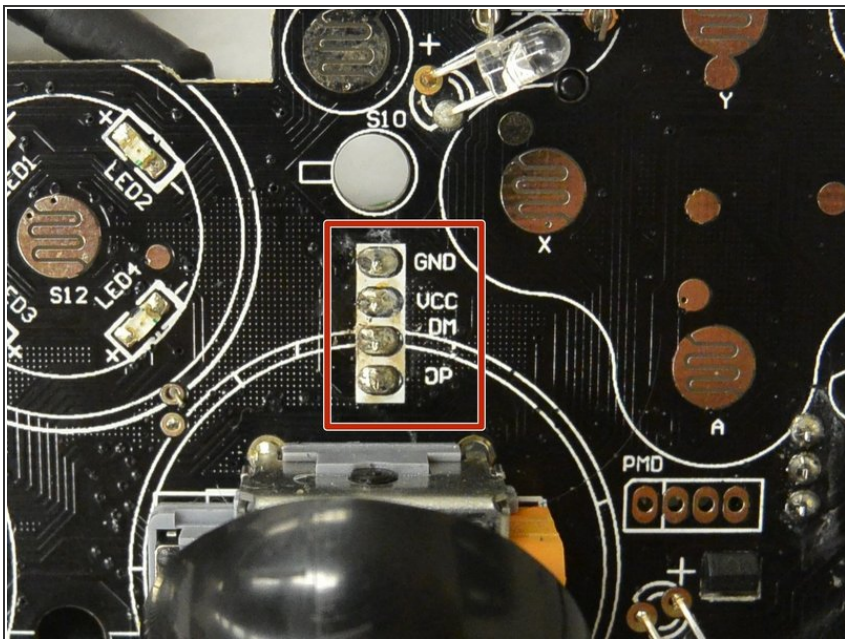
- Remove the top cover from the bottom and place next to each other.

### Step 4 — Cable



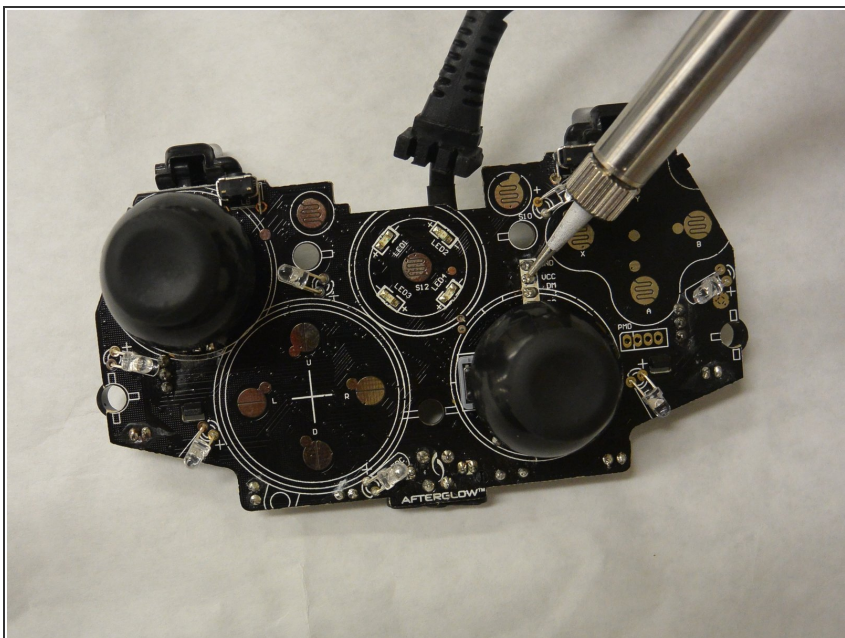
- Remove the logic board by lifting up on the logic board and pulling out.

## Step 5



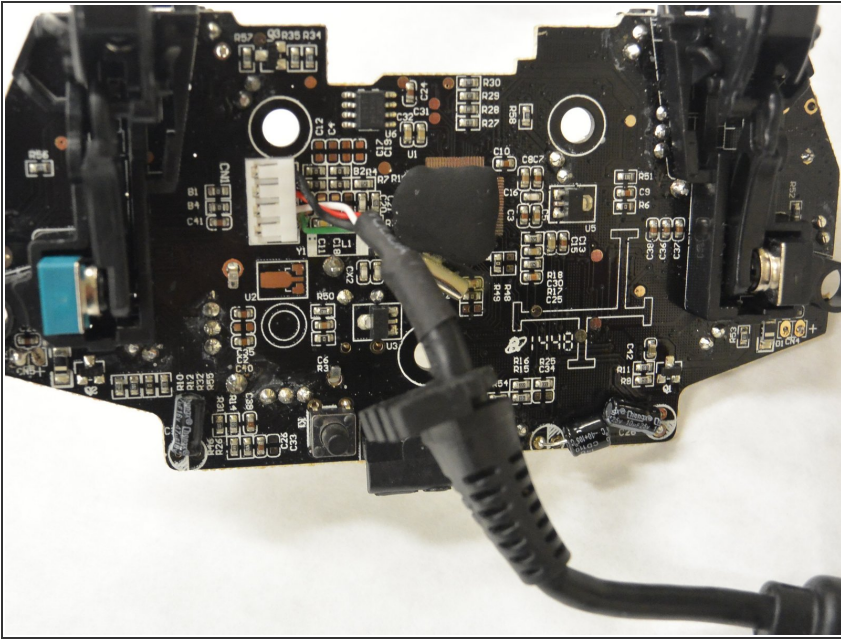
- The cable connects to the logic board with a white connector. Above the right joystick, there are four solder pins labeled GND, VCC, DM, and DP.

## Step 6



- ⚠ The soldering iron is very hot and can harm you or the device if used incorrectly.
- Desolder the four pins.

## Step 7



- Using your new cable, solder the white connector to the logic board. Be sure to have the cables facing towards the inside of the logic board.

To reassemble your device, follow these instructions in reverse order.