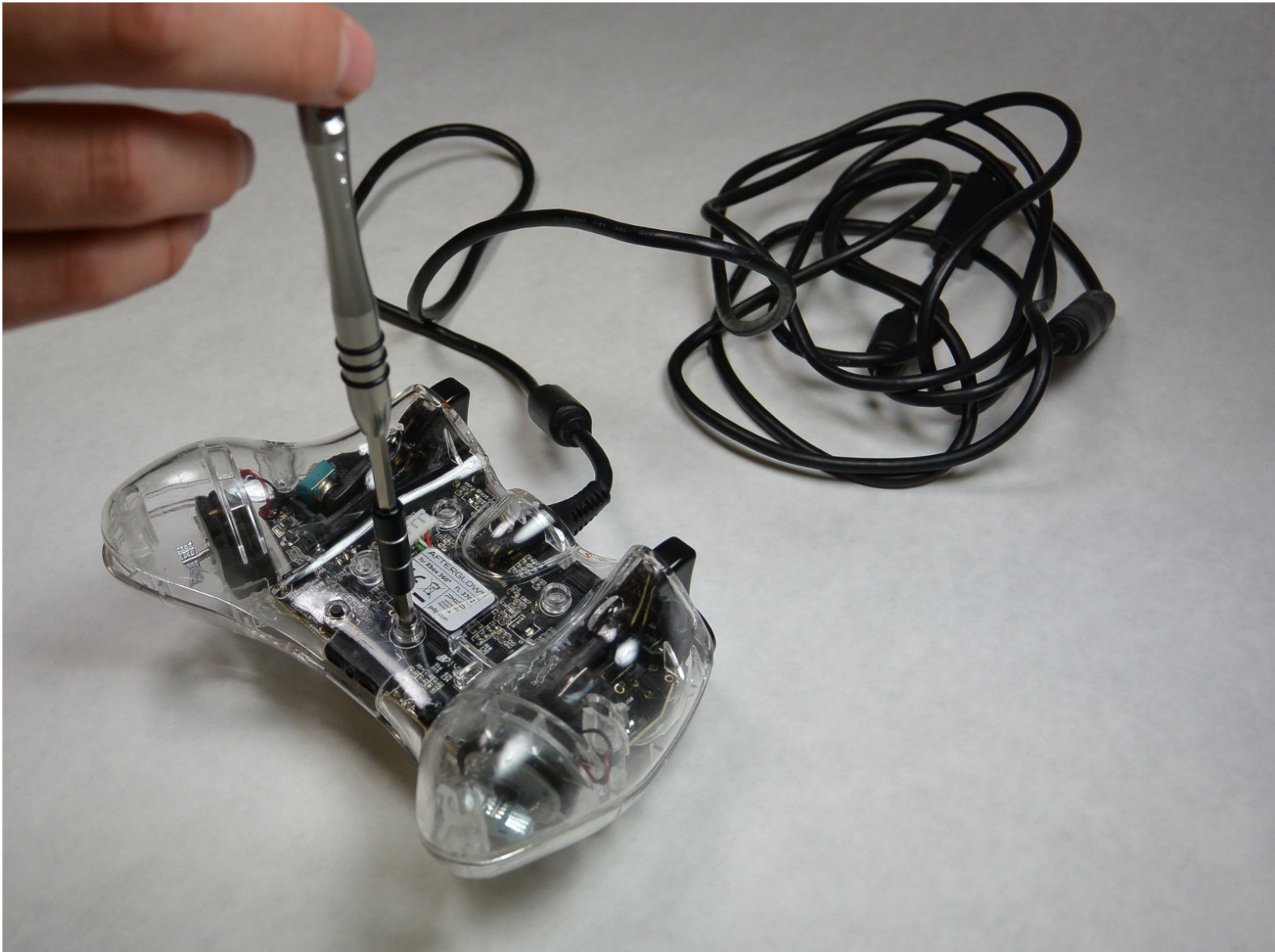




PDP Afterglow Wired Xbox 360 Controller Case Replacement

Opening the shell of the Xbox 360 controller.

Written By: Aaron

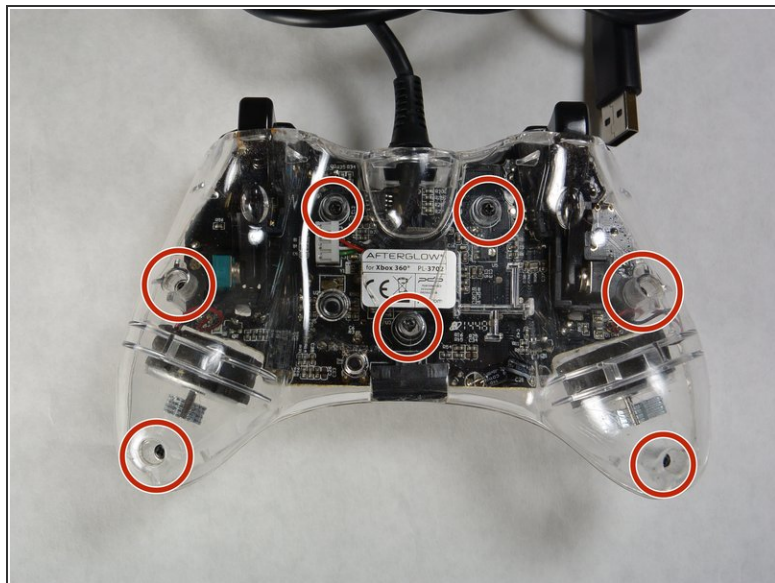




TOOLS:

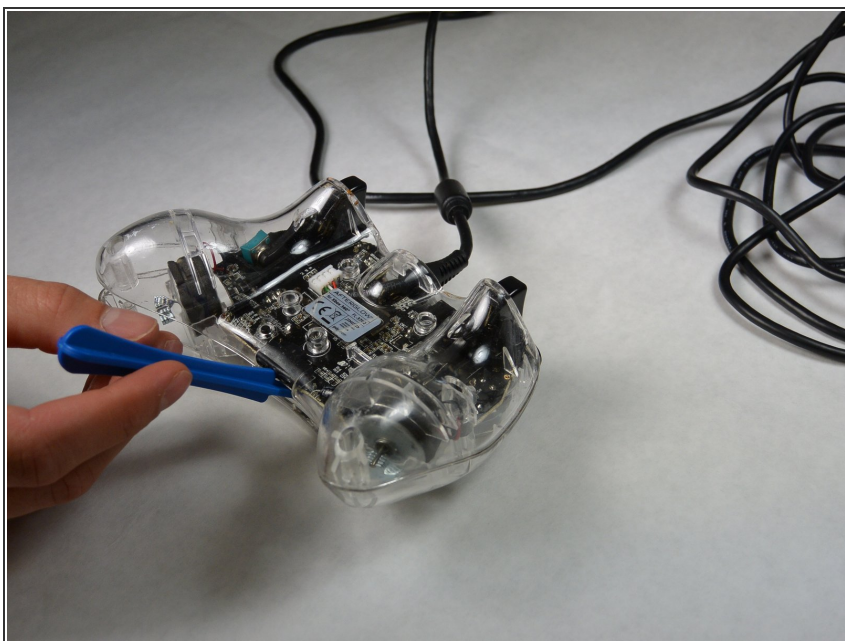
- [Screwdriver](#) (1)
 - [iFixit Opening Tools](#) (1)
-

Step 1 — Case



- Loosen the seven 11 mm Phillips #0 screws located on the back of the controller.

Step 2



- Using a plastic opening tool, pry the back cover from the front.
- ⓘ The covers should separate without needing a plastic opening tool, but in some cases you may need to use it.

Step 3



- Remove the top cover from the bottom and place next to each other.

To reassemble your device, follow these instructions in reverse order.