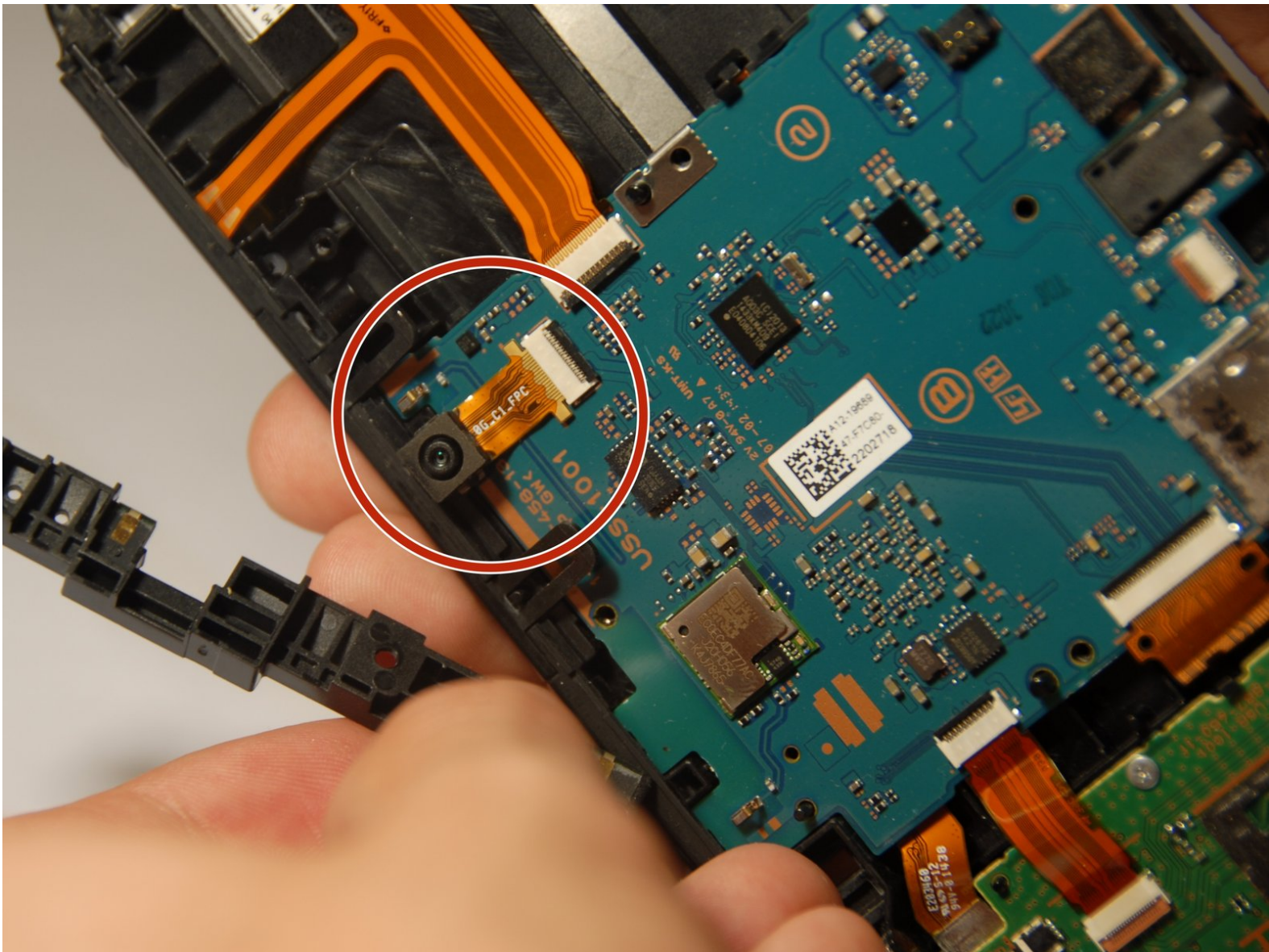




PS Vita Slim Back Camera Replacement

How to replace the PlayStation Vita Slim rear camera.

Written By: Daniel Woodard



INTRODUCTION

Note::: taking apart your device may void the warranty on the device, please proceed with caution and consider having it sent in first if possible to be worked on by the company. This guide will help you replace the back camera of the PSVita Slim in case anything has gone wrong with the device. This guide should be simple and easy to follow. As long as you take your time and you are careful you should be able to complete the replacement process with ease.



TOOLS:

- [JIS #00 Screwdriver](#) (1)
 - [iFixit Opening Tools](#) (1)
 - [Tweezers](#) (1)
-

Step 1 — Back Panel



- ⚠ Taking apart your device may void the warranty on the device, please proceed with caution and consider having it sent in first if possible to be worked on by the company.
- ℹ Please make sure the system is completely powered off and all SD storage cards are removed before starting the removal process
- All 6.35mm screws were removed using a J00 bit from the iFixit pro toolkit.
- There are four screws on the back of the device, remove them as shown.

Step 2





- There are two screws on the bottom, near the charging port, remove them using the J00 screwdriver on the 6.35mm screws from the iFixit pro toolkit.
- Finally, remove the top screw under the dust cover using the J00 screwdriver on the 6.35mm screws from the iFixit pro toolkit.

Step 3



 The next step will require the opening tool.

 Please carefully separate the back from the front completely. You will need to disconnect the small ribbon cable on the inside before completely removing the back. Otherwise you may end up hurting the ribbons on the inside.

 While separating the back, carefully pry all the way around the back. You will hear popping noises while going around and this is a good sign.

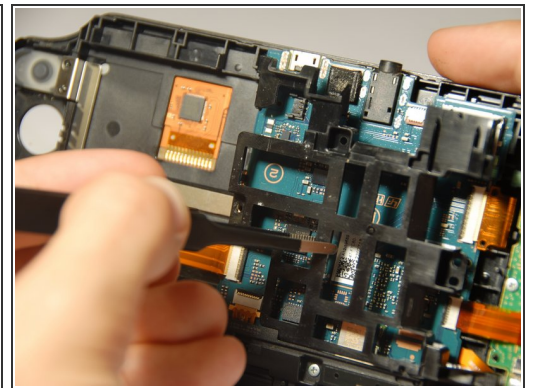
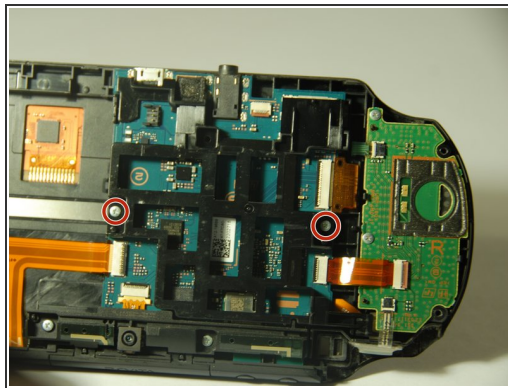
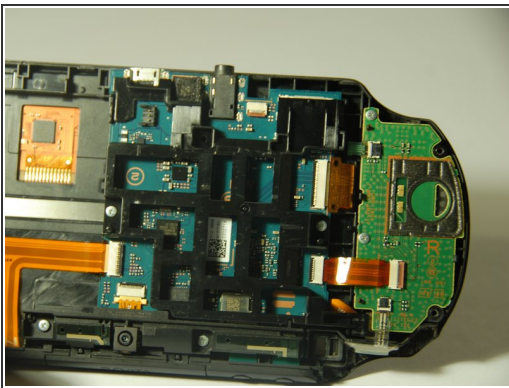
- Upon removing the back panel you will need to slowly and carefully remove the ribbons connecting the hardware to access the needed parts to be repaired.

Step 4



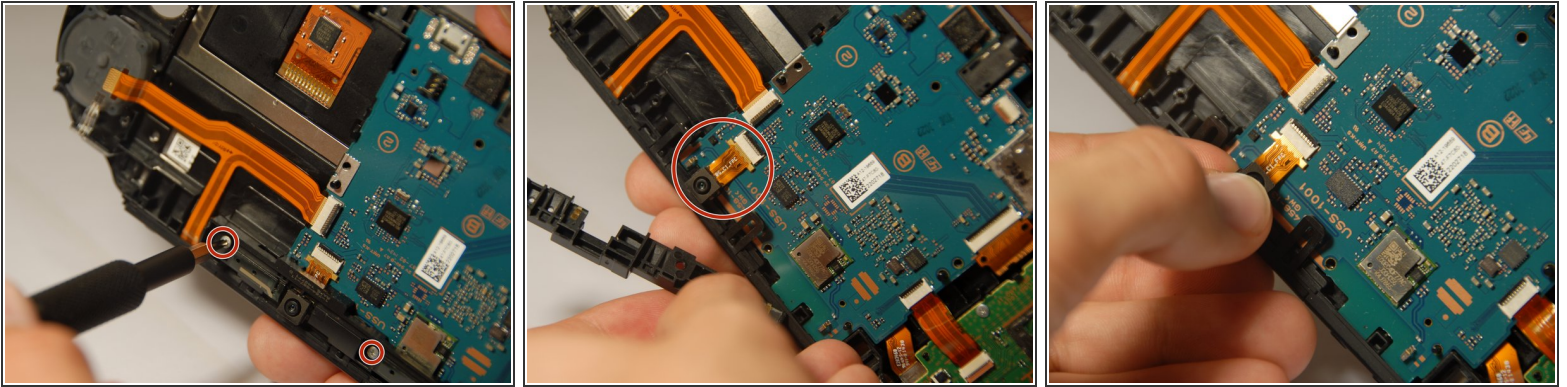
- Once the ribbons have been removed, then the back is fully removed and you can access the hardware within.

Step 5 — Back Camera



- i** The back camera is fastened to the motherboard via a ribbon cable .
- So first we must remove the casing, remove the two 6.35 mm screws using a J00 screwdriver.
 - After the screws have been removed, carefully remove the black casing.

Step 6



- i With the black casing removed, next we need to remove the top camera frame casing.
 - You will need to remove the two 6.35 mm using a J00 screwdriver.
- i After the screws have been removed you can then carefully remove the camera frame casing. You can also now see the camera itself.
 - You can now remove the camera, **but** you must be careful to not damage it.

To reassemble your device, follow these instructions in reverse order.