



PS Vita Slim Battery Replacement

How to replace the battery of a PlayStation Vita Slim.

Written By: Daniel Woodard



INTRODUCTION

Note::: taking apart your device may void the warranty on the device, please proceed with caution and consider having it sent in first if possible to be worked on by the company. This guide's goal is to help the user to replace the battery of a PS Vita Slim. In case the battery is faulty or has some other kind of problem.



TOOLS:

- [JIS #00 Screwdriver](#) (1)
- [Spudger](#) (1)
- [iFixit Opening Tools](#) (1)
- [Tweezers](#) (1)





PARTS:

- [PlayStation Vita Slim Replacement Battery](#) (1)

Step 1 — Back Panel



 Taking apart your device may void the warranty on the device, please proceed with caution and consider having it sent in first if possible to be worked on by the company.

 Please make sure the system is completely powered off and all SD storage cards are removed before starting the removal process

- All 6.35mm screws were removed using a J00 bit from the iFixit pro toolkit.
- There are four screws on the back of the device, remove them as shown.

Step 2





- There are two screws on the bottom, near the charging port, remove them using the J00 screwdriver on the 6.35mm screws from the iFixit pro toolkit.
- Finally, remove the top screw under the dust cover using the J00 screwdriver on the 6.35mm screws from the iFixit pro toolkit.

Step 3



 The next step will require the opening tool.

 Please carefully separate the back from the front completely. You will need to disconnect the small ribbon cable on the inside before completely removing the back. Otherwise you may end up hurting the ribbons on the inside.

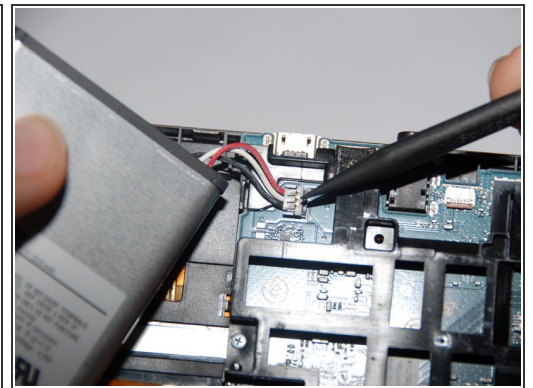
-  While separating the back, carefully pry all the way around the back. You will hear popping noises while going around and this is a good sign.
- Upon removing the back panel you will need to slowly and carefully remove the ribbons connecting the hardware to access the needed parts to be repaired.

Step 4



- Once the ribbons have been removed, then the back is fully removed and you can access the hardware within.

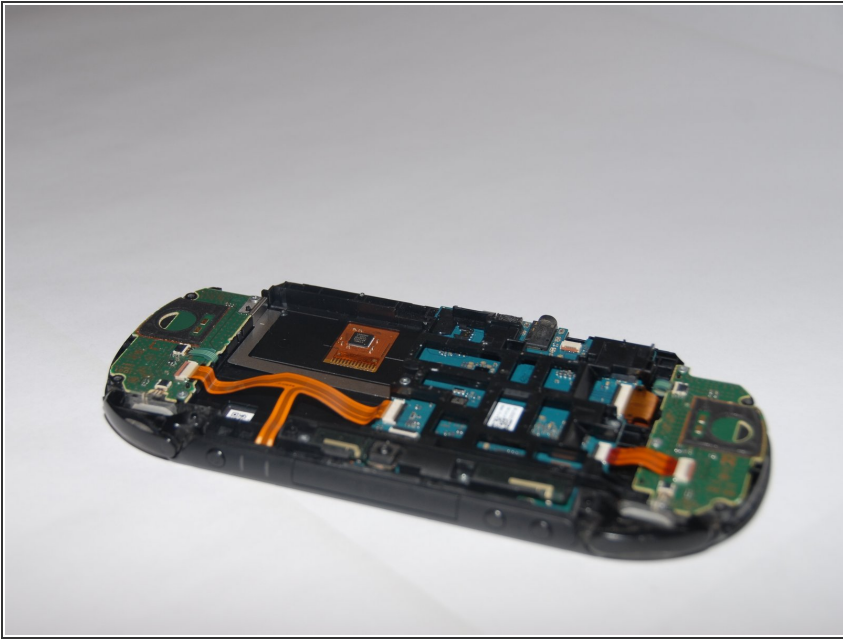
Step 5 — Battery



i The battery should be very visible at this point in the guide.

- Using the spudger carefully pry the battery out of the socket. Do not remove the battery fully yet.
- Now using the tweezers carefully remove the ribbon connecting the battery from the hardware.

Step 6



i Now the battery is removable and the process should be complete. You should be free to do what is needed.

To reassemble your device, follow these instructions in reverse order.