



# PSP 1000 Button Board Replacement

In this repairing manual I'm going to show how to get the button board.

Written By: Javi





## TOOLS:

- [Essential Electronics Toolkit](#) (1)
-

## Step 1 — Button Board



- That's my PSP. As you can see, the UMD door it's broken. It fell down when I was playing.
  - That's the part where the screws are located. You must move away the battery before doing nothing.
  - We must unscrew the screws marked with colour blue.
- ☒ Remind to keep safe the screws, because you can loose them!

## Step 2



- After unscrew the screws we can move away the front case.
- This is the button board. In my case it's damaged.

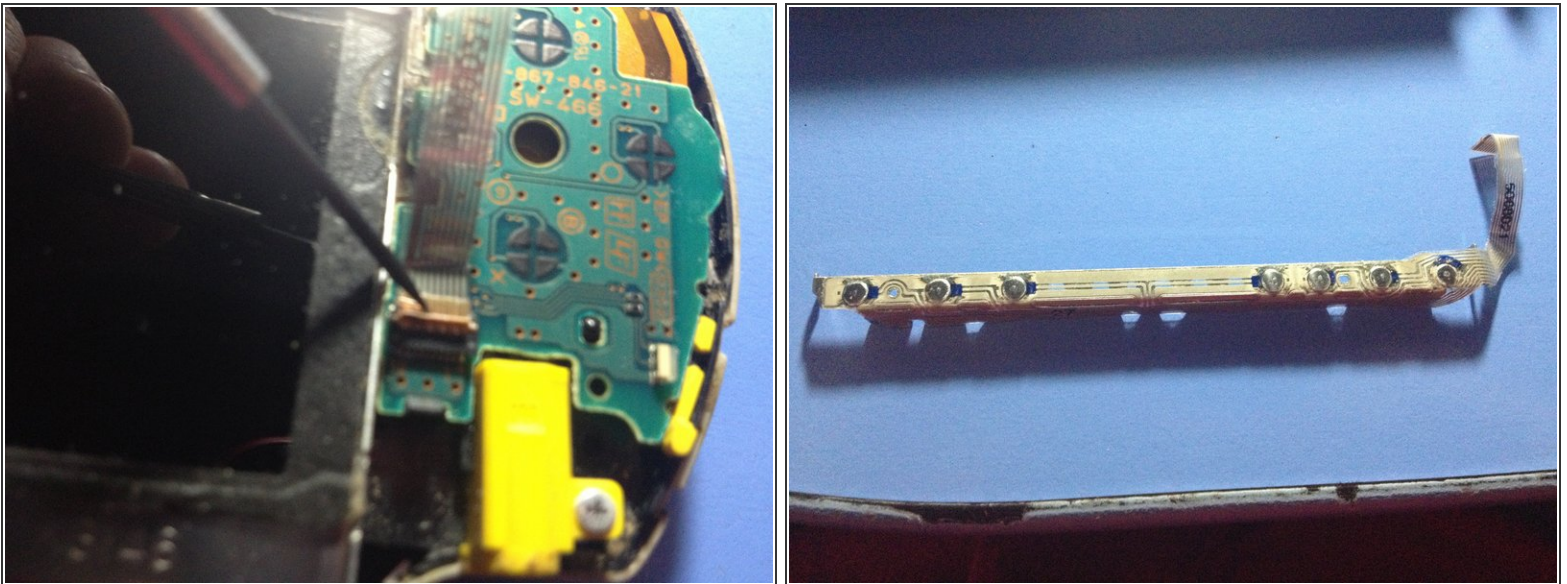
## Step 3



- This is one of the two clips which the button board has. With an opener tool you should release it.

⚠ Be careful with this ribbon cable!

## Step 4



- Lift the latch open, away from the ribbon cable.
- Pull the cable away from the latch, and we are done! Be careful with the latch because it breaks easily!

To reassemble your device, follow these instructions in reverse order.