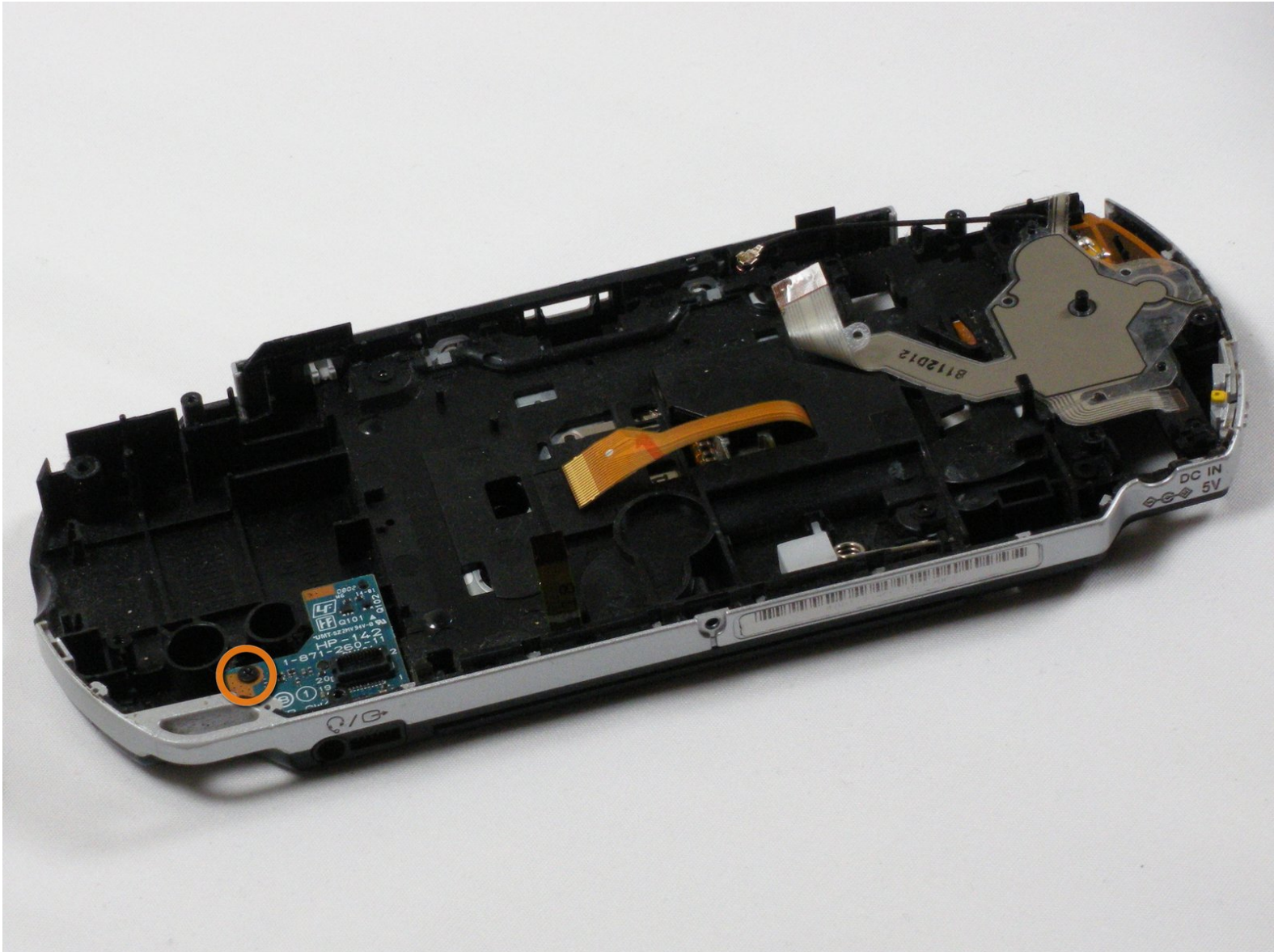




PSP 2000 Audio Jack Replacement

Written By: espinks



INTRODUCTION

Do your earphones only work as earmuffs? You may need to replace your PSP's audio jack.



TOOLS:

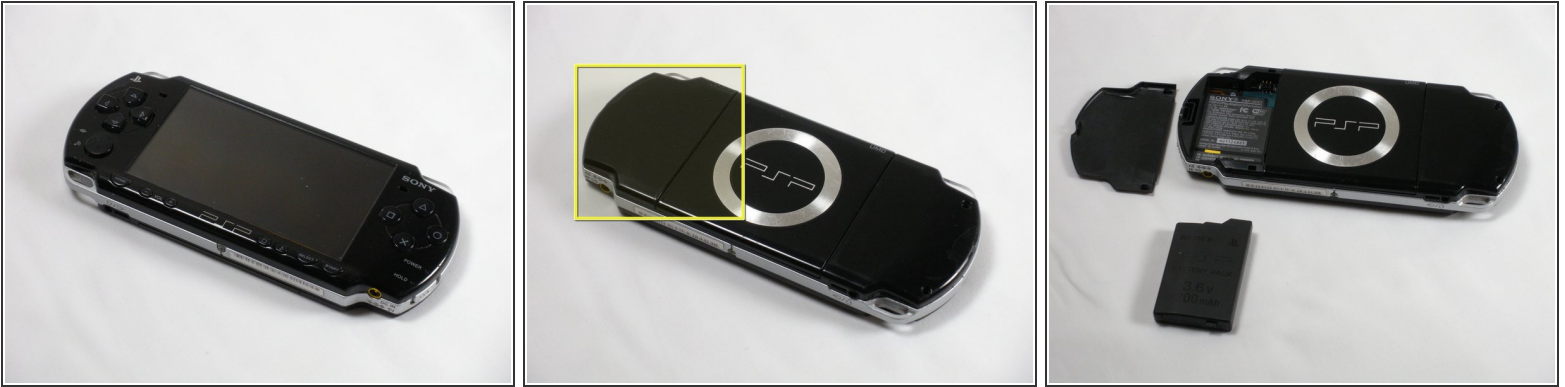
- [Phillips #00 Screwdriver](#) (1)
- [iFixit Opening Tools](#) (1)



PARTS:

- [Sony PSP 2000 Headphone Jack](#) (1)

Step 1 — Battery



- Place PSP face down, so that the UMD Drive is facing upwards.
- Locate the battery door and open.
- Remove the battery from inside.

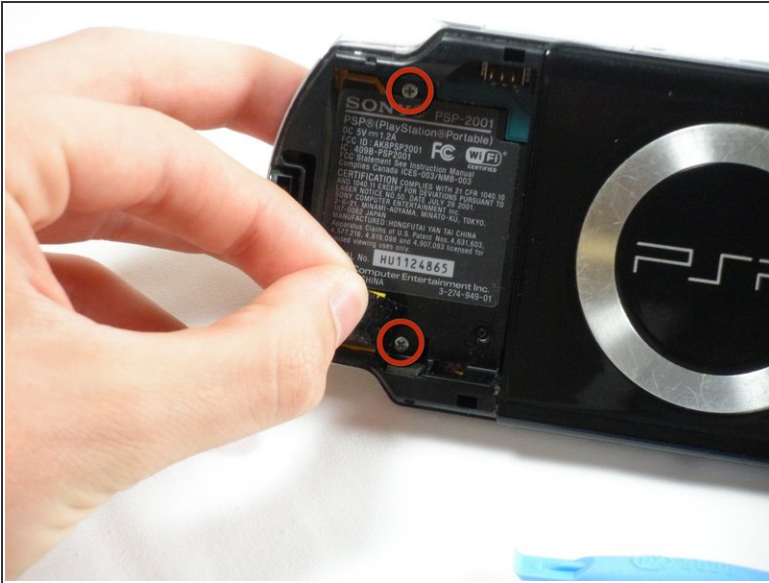
Step 2 — Front Casing



⚠ This step requires the removal of the warranty sticker. **Removing the sticker will void the warranty.** According to the FTC removing this will not void your warranty.

- Locate the sticker in the battery compartment labeled: *"En: Warranty Void if Seal Damaged."*
- Remove the sticker using the PSP Opening Tools.
- ⓘ Under the sticker is a 5mm Phillips screw needed in the next step.

Step 3



- Remove four 5 mm Phillips from the case.

i If the screws stick in the case, you can use a magnetized screwdriver to draw them out.

Step 4



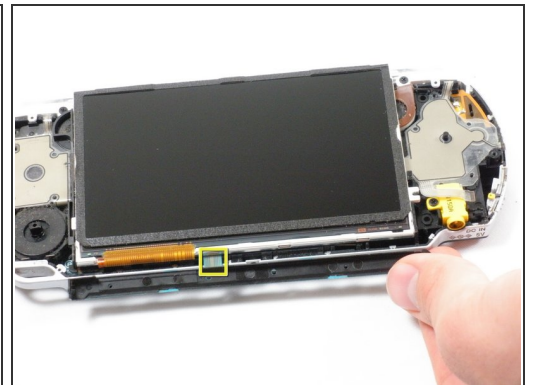
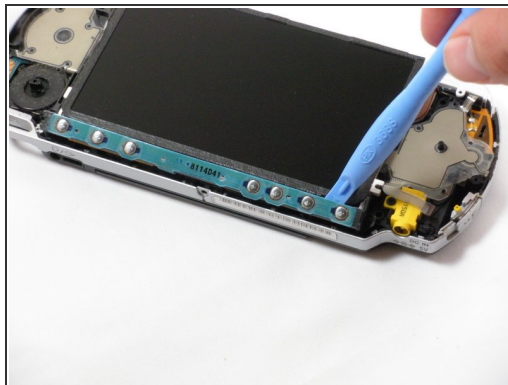
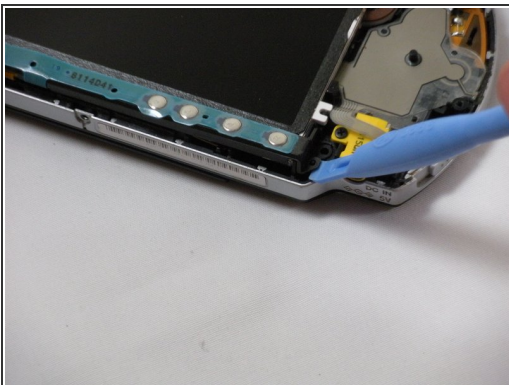
- Remove the following screws from around the bezel:
 - Two 4 mm Phillips
 - One 5 mm Phillips
- ☑ The two shorter 4 mm screws are on the top of the PSP; the longer 5 mm screw is on the bottom.

Step 5



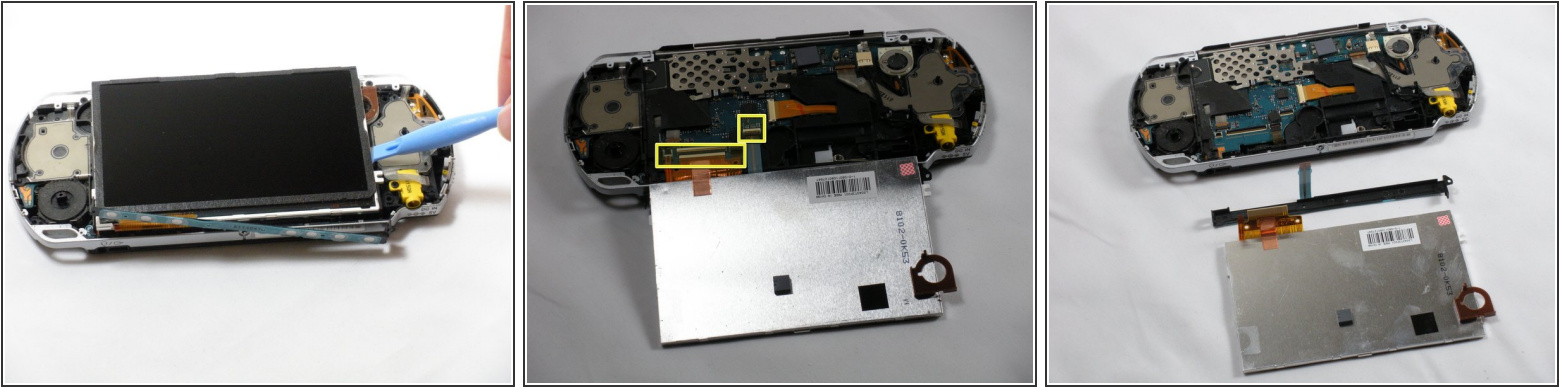
- Gently pry the front bezel away from the casing using a PSP opening tool.
- Start on the right hand side of the PSP bezel, and carefully work the tool around the side.
- ⓘ If you want to clean the control buttons or D-pad, you can easily pop them out once the faceplate is off and wipe them clean.

Step 6 — Display




- Remove the home bar by gently prying on the left and right sides of it with the opening tools. Lift the bar out of the device.
- ⚠ A ribbon cable connects the home bar to the logic board. Be careful not to damage the cable when removing the bar.

Step 7

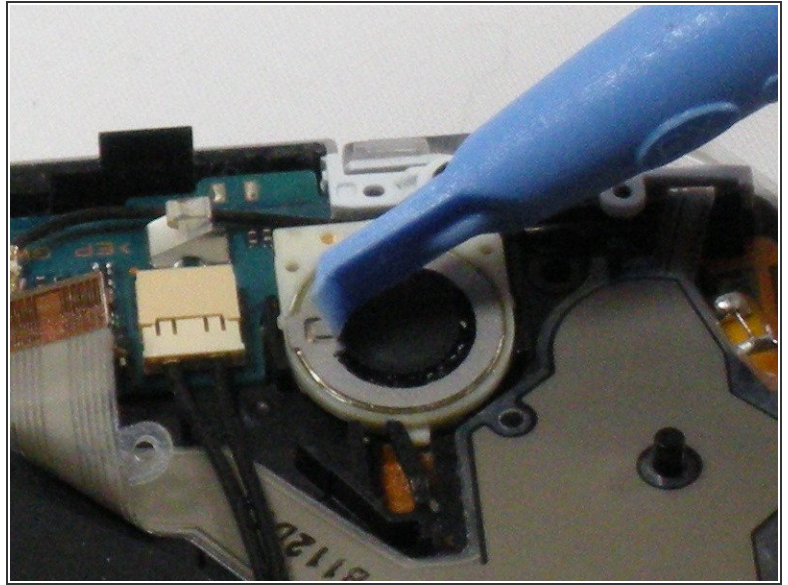
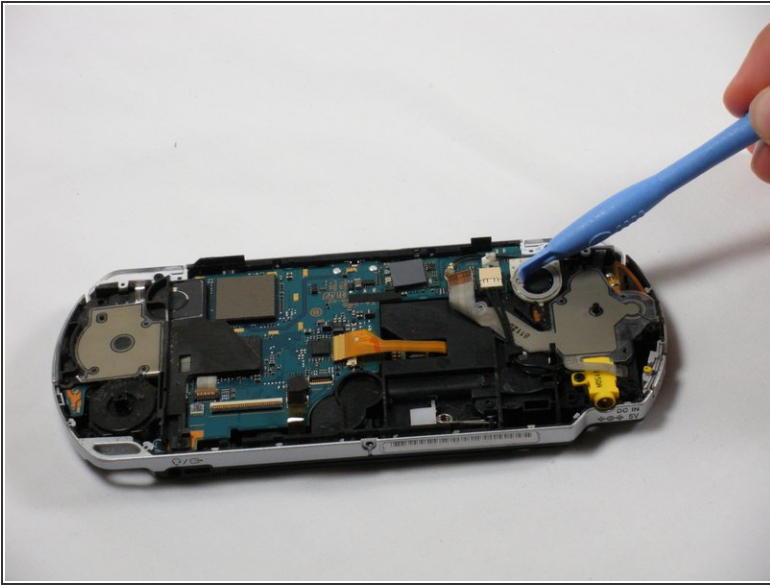


- With the home bar out of the way, gently pry up the display using the opening tools.

 There is another ribbon cable attached to the bottom of the LCD. Be careful not to damage either of the connectors when removing.

- Lift the black tabs of the ribbon cable connectors using a opening tool. Pull the ribbons out towards the bottom of the PSP to disconnect.
- Gently lift out the display.

Step 8 — Speaker

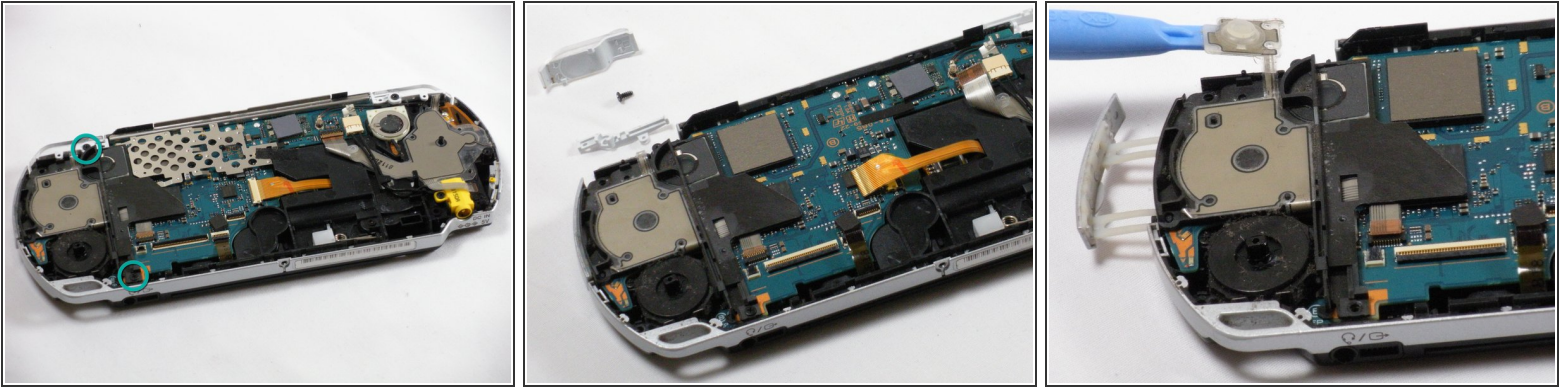


- Use the opening tools to press the tab on the left-hand side of the speaker to release it.

⚠ Be careful not to puncture the speaker in the process.

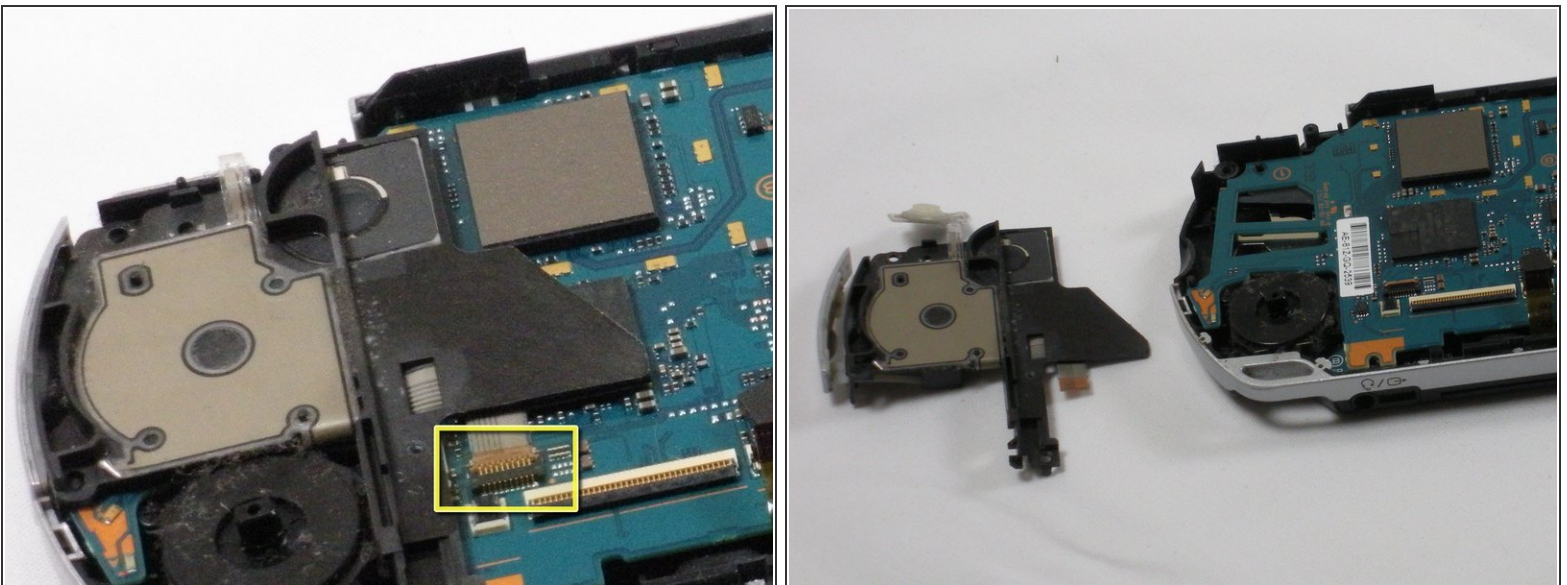
- Remove the speaker by twisting it counter-clockwise (to the left, like a screw).

Step 9 — Memory Stick Slot



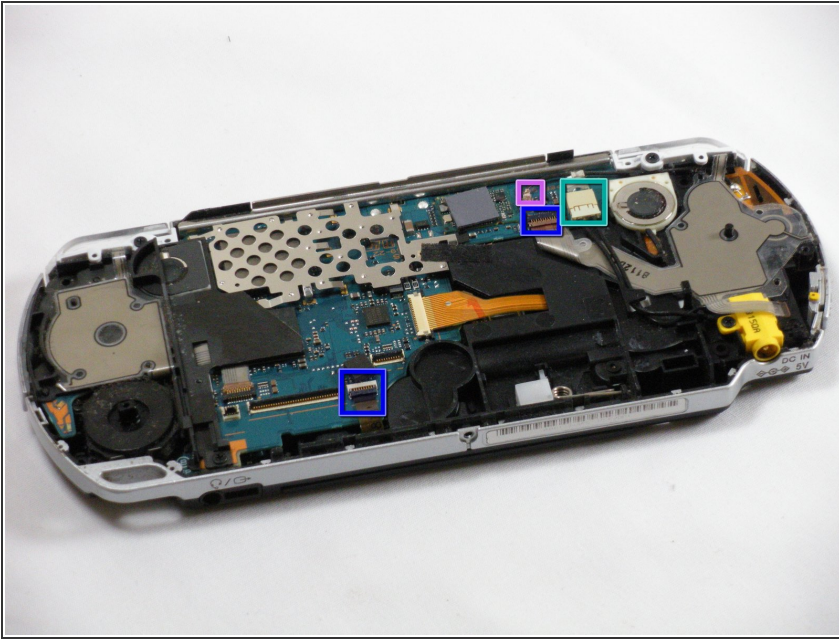
- Remove two 4.5 mm Phillips screws from the left-hand side of the PSP.
 - Slide off the left trigger along with the plastic bracket underneath.
 - Carefully pry off left trigger button using opening tools.
- i** The button is adhered to the body. It can be re-adhered with hot glue after being pried-up, if necessary.

Step 10



- Use an opening tool to lift up the brown tab on the connector and remove the cable horizontally.
- Gently remove the memory card slot by pulling it straight out.

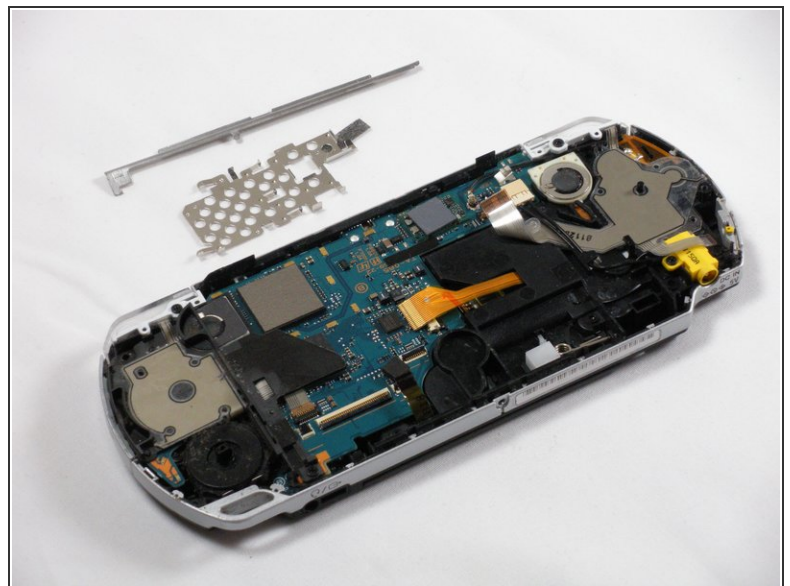
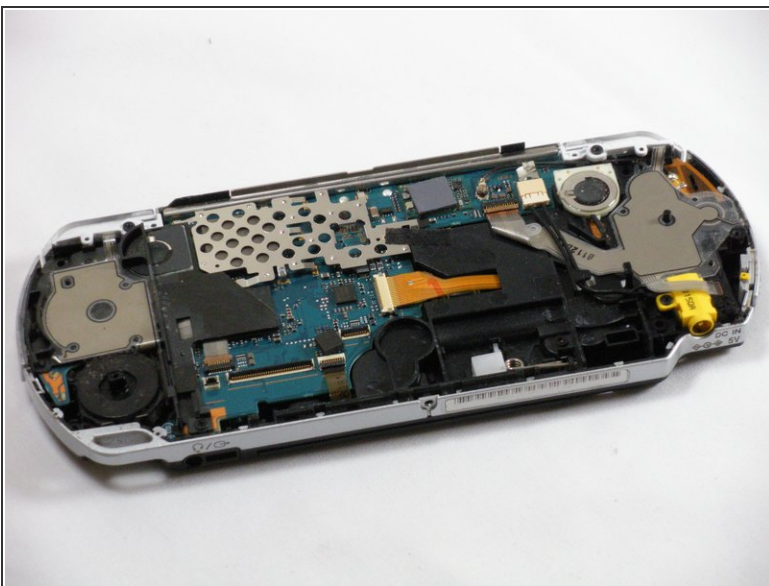
Step 11 — Logic Board



- Remove the following four connections:
 - Two ribbon cables -- flip up latch and remove horizontally.
 - One wire clamp -- use an opening tool to pry it up vertically.
 - One wiring harness -- use your fingers, a PSP opening tool, or tweezers to disconnect the connector horizontally.

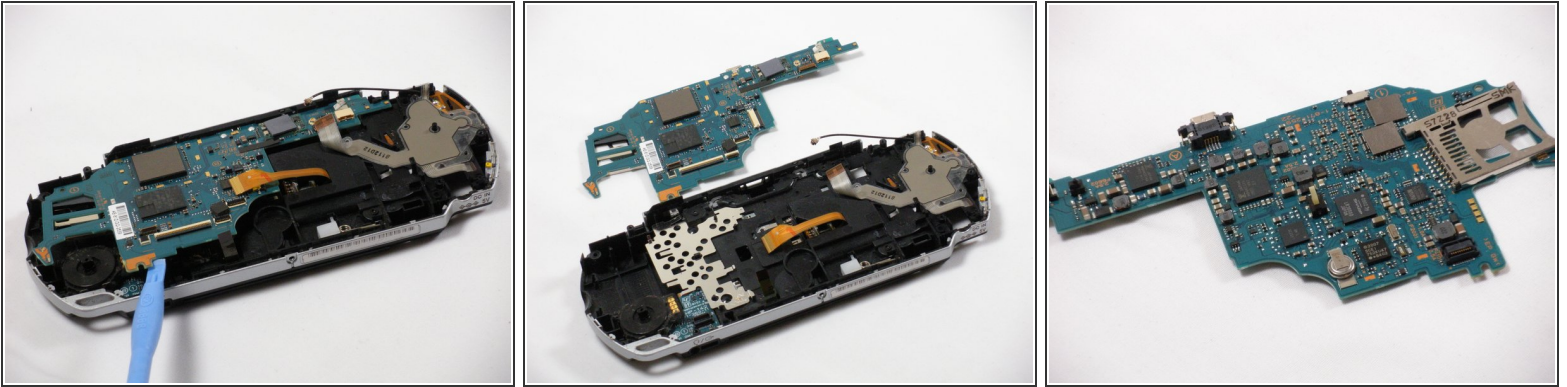
⚠ The ribbon cable near the wire clamp has a brown tab that should be lifted using an opening tool prior to removal. Be careful to not damage the ribbon or connector.

Step 12



- Remove metal shields by gently lifting them with an opening tool.

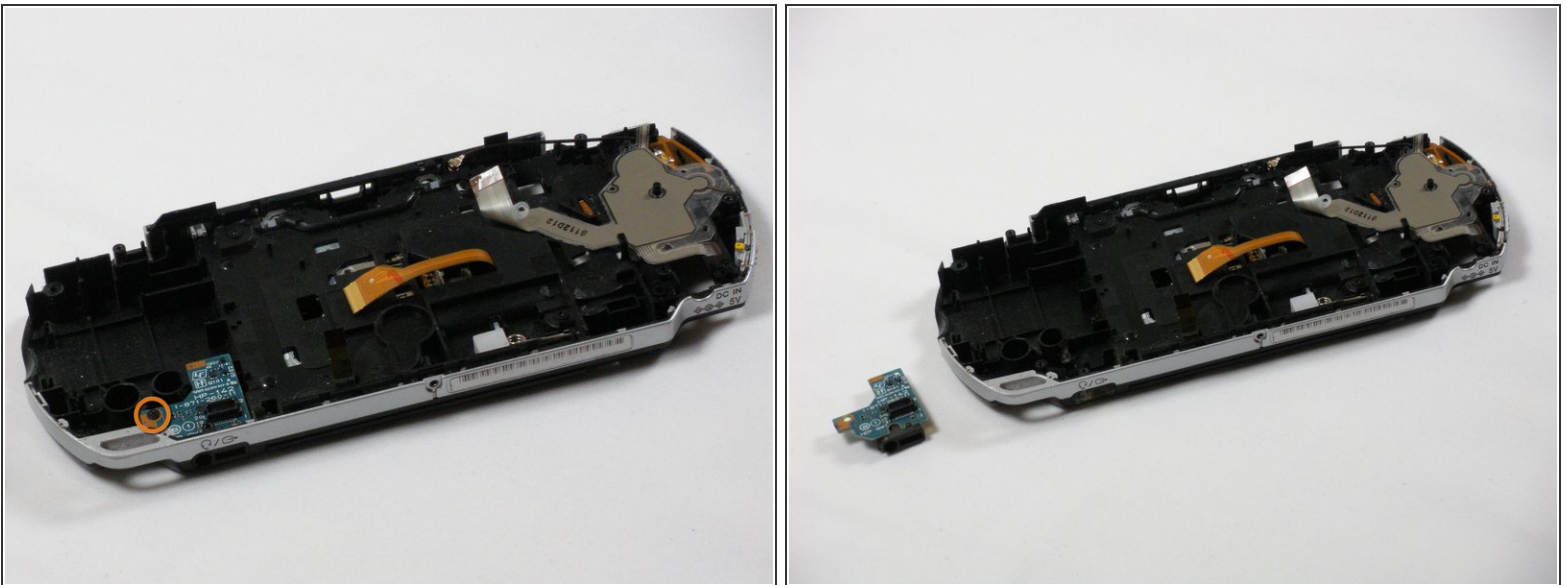
Step 13



☑ Double-check to make sure that all connections to the board are unplugged in order to avoid damage to your PSP.

- Using an opening tool, delicately raise the logic board from its base.

Step 14 — Audio Jack



- With the logic board out of the way, remove the 4mm Phillips screw.
- Carefully lift the headphone jack out of the casing.
- Carefully lift headphone jack out of casing.

To reassemble your device, follow these instructions in reverse order.