



# PSP 2000 Joystick / Analog Stick Replacement

Written By: ZFix



# INTRODUCTION

How to change / replace joystick (analog stick).

[video: [http://www.youtube.com/watch?v=QP6\\_VPTABM8](http://www.youtube.com/watch?v=QP6_VPTABM8)]



## TOOLS:

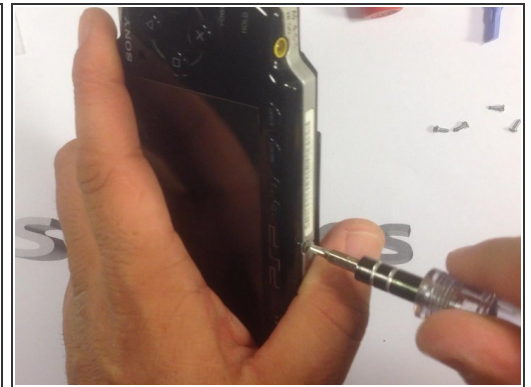
- [Phillips #00 Screwdriver](#) (1)
  - [iFixit Opening Tools](#) (1)
-

## Step 1 — Joystick / Analog Stick



- Remove the battery and memory card!

## Step 2



- You have to remove seven screws.

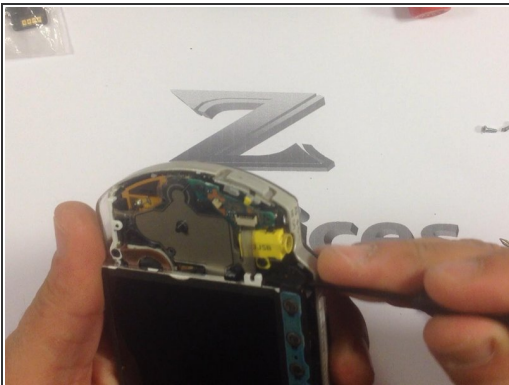


### Step 3



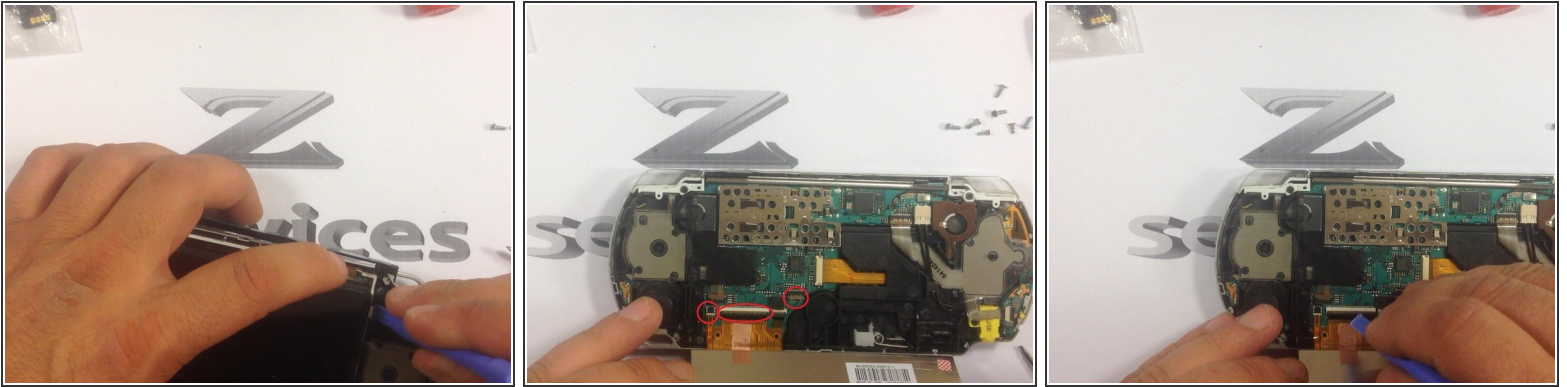
- The front face-plate.

### Step 4



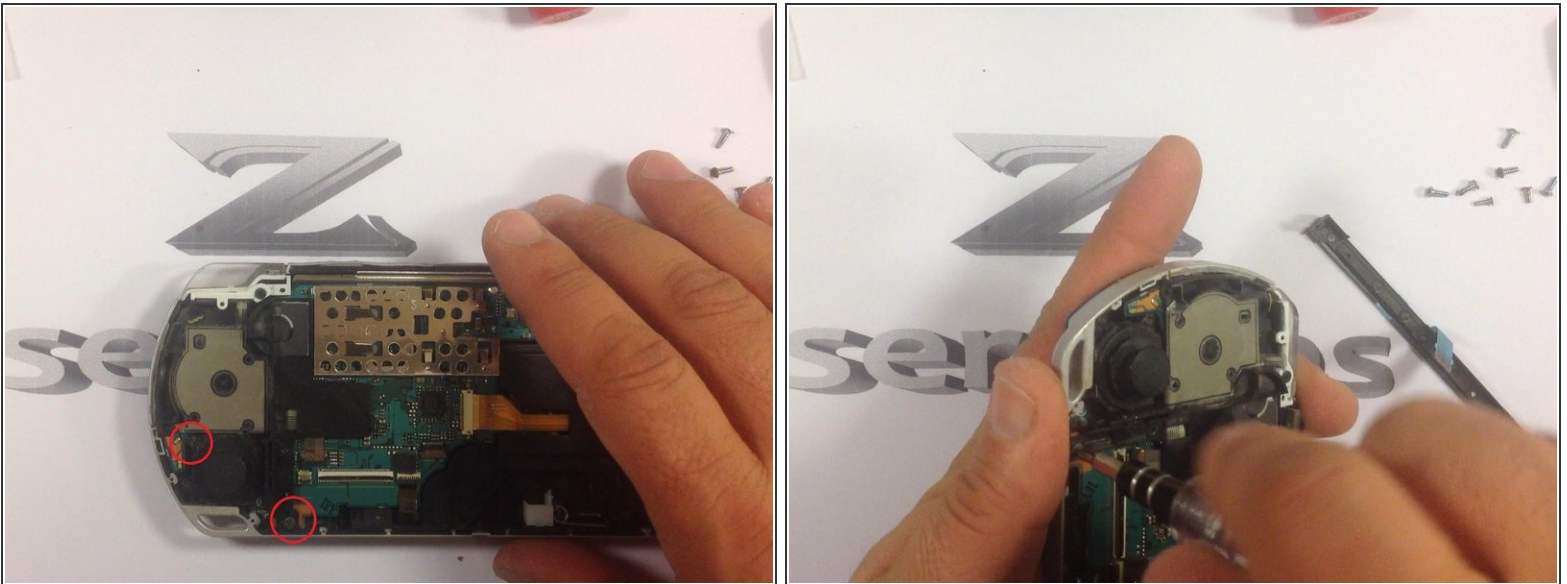
- The plate with volume-start-home key flex.

## Step 5



- Be careful while removing the screen! Release the cables for screen and "volume-start-home keys"!

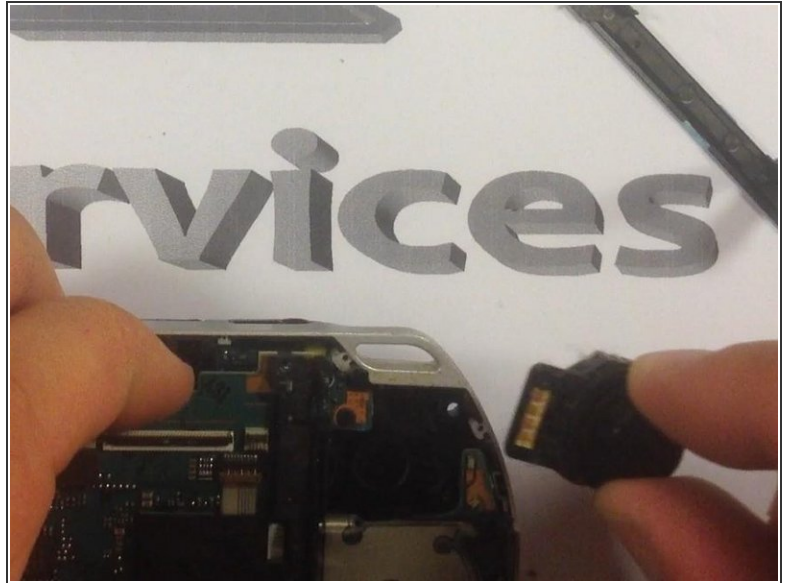
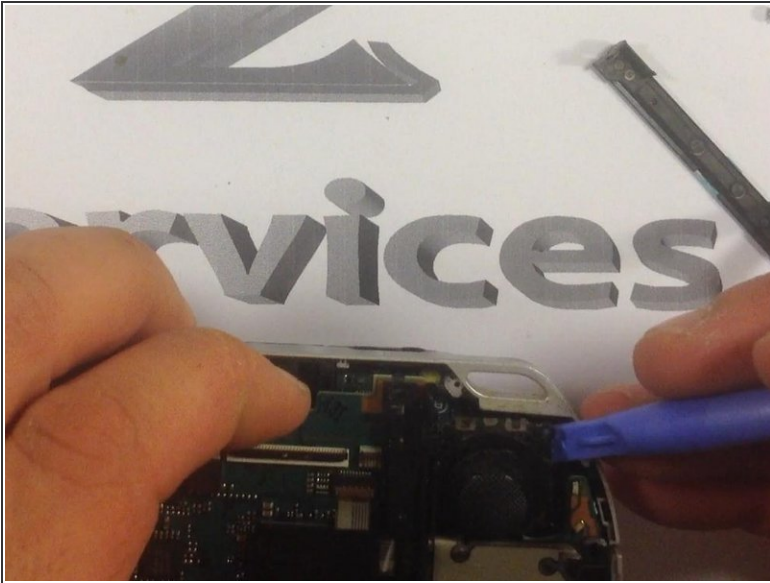
## Step 6



- Insert wisdom here.

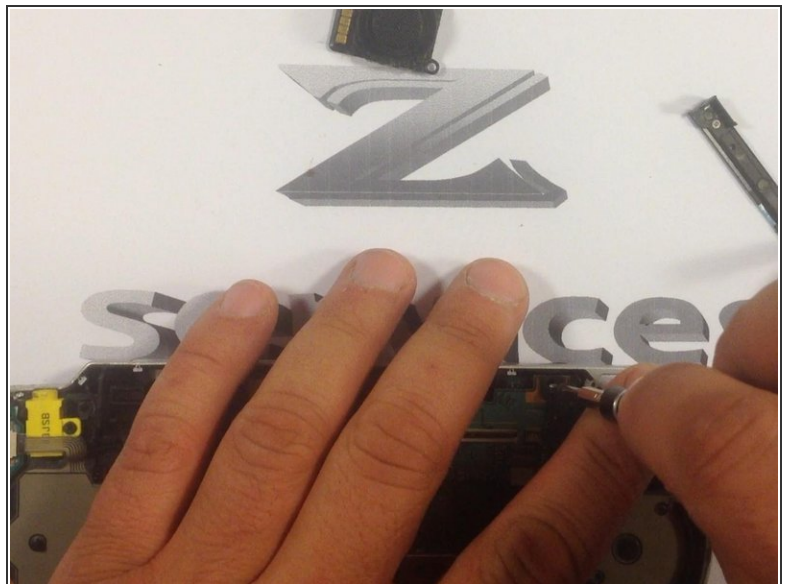
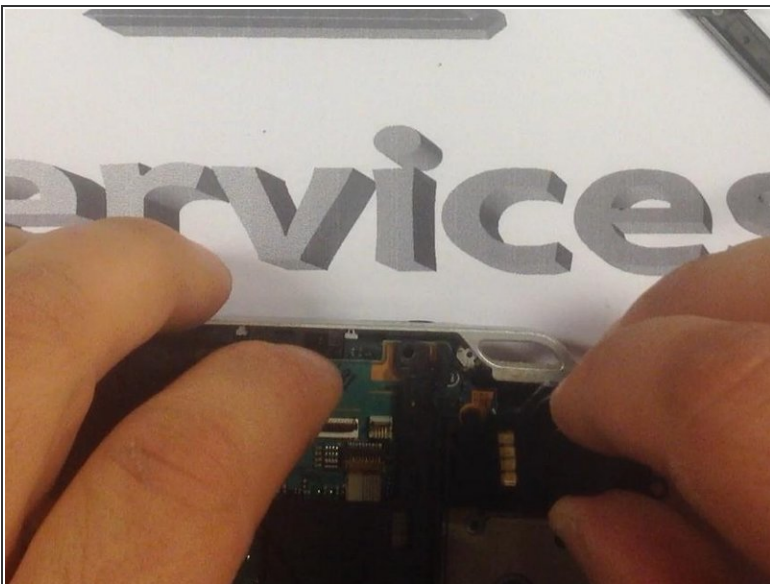


## Step 7



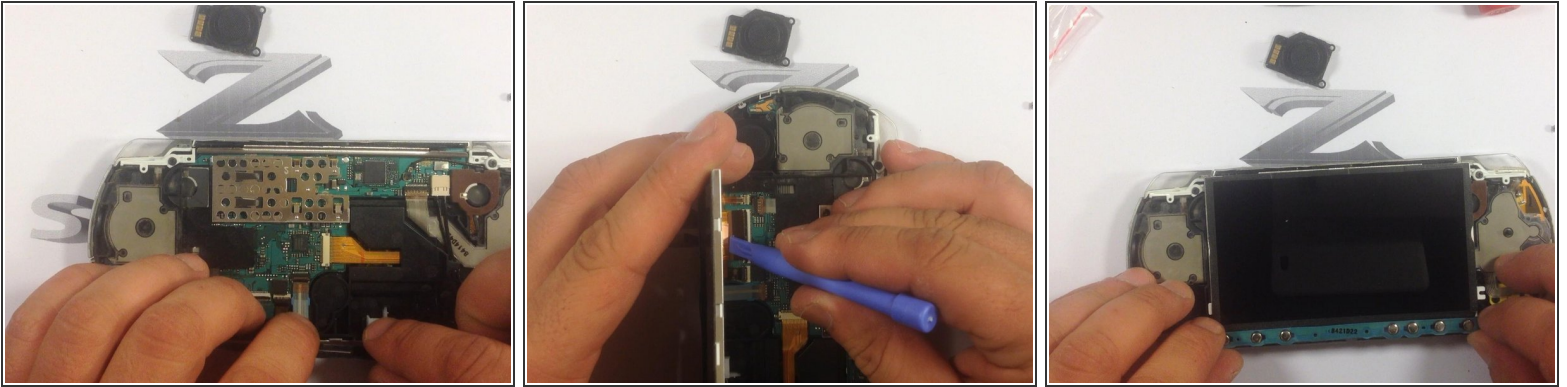
- Slightly lift the board and remove the joystick!

## Step 8



- Now is the time for the new replacement part.

## Step 9



- The assembling now is easy.

## Step 10



- That's all. I hope I've been helpful.

To reassemble your device, follow these instructions in reverse order.