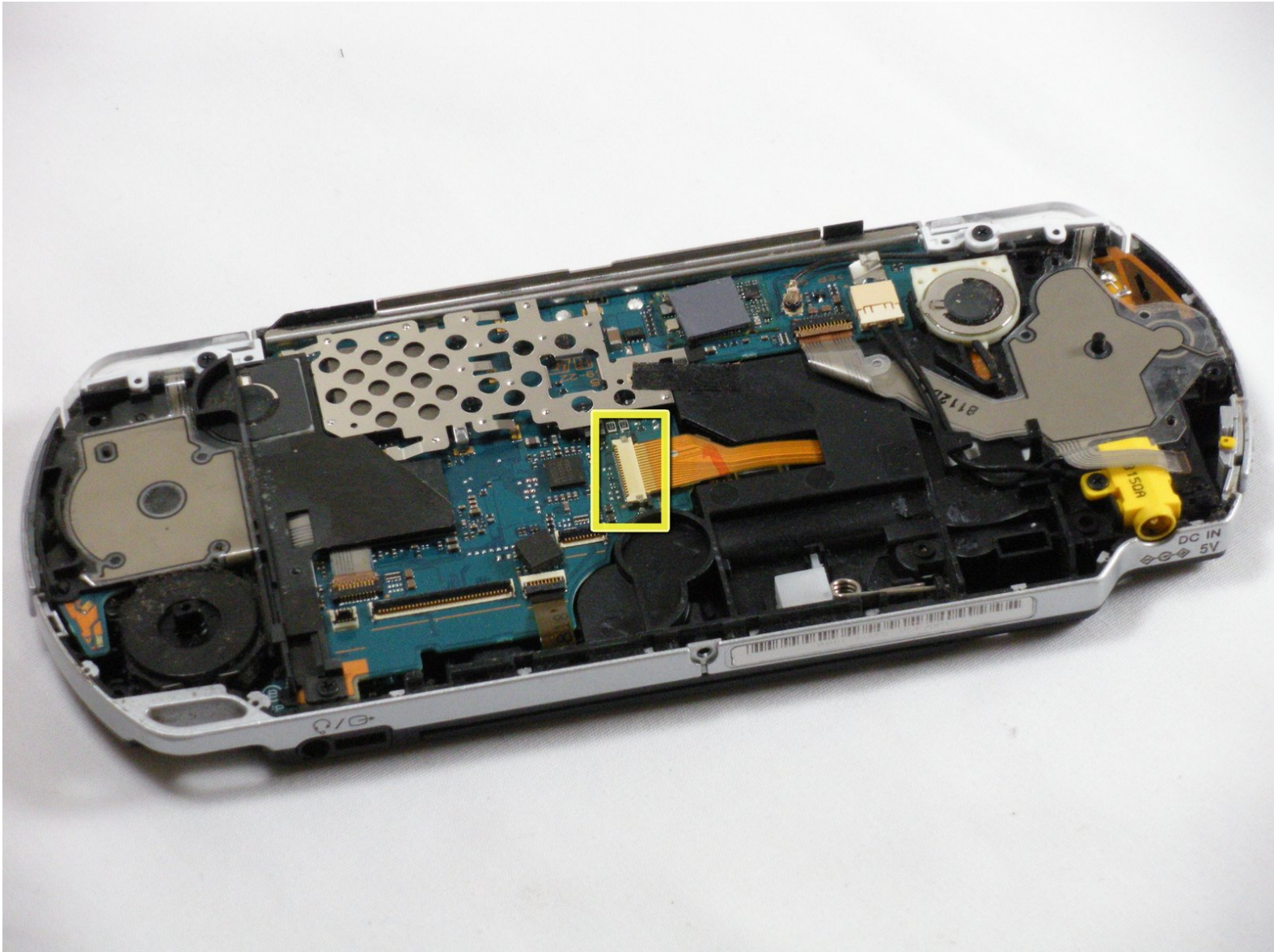




PSP 2000 UMD Drive Replacement

Written By: pepe32290



INTRODUCTION

Having trouble reading discs? This guide is for you!



TOOLS:

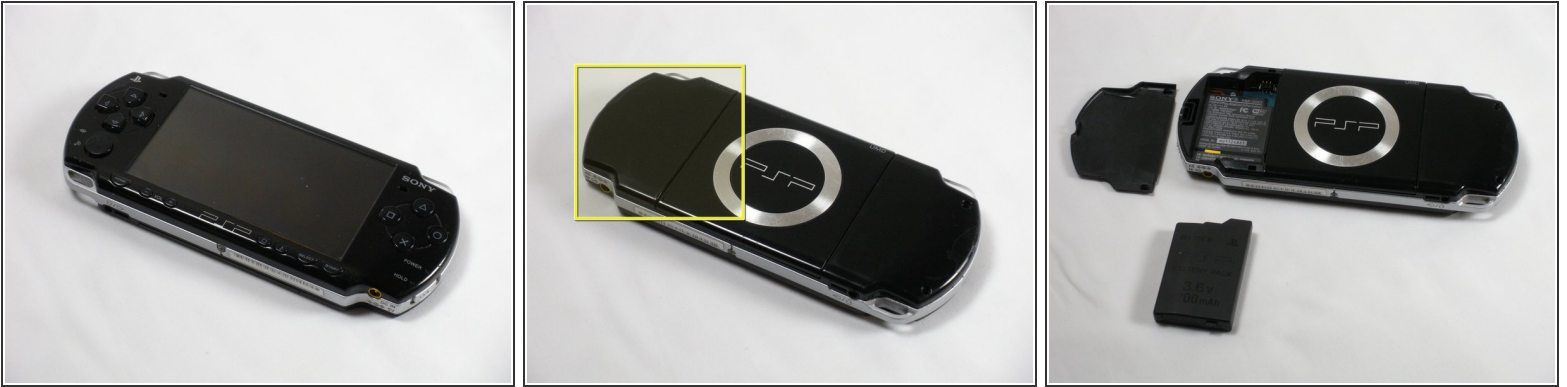
- [Phillips #00 Screwdriver](#) (1)
- [iFixit Opening Tools](#) (1)



PARTS:

- [Sony PSP 2000/3000 UMD Drive](#) (1)
- [Sony PSP 2000 UMD Door](#) (1)

Step 1 — Battery



- Place PSP face down, so that the UMD Drive is facing upwards.
- Locate the battery door and open.
- Remove the battery from inside.

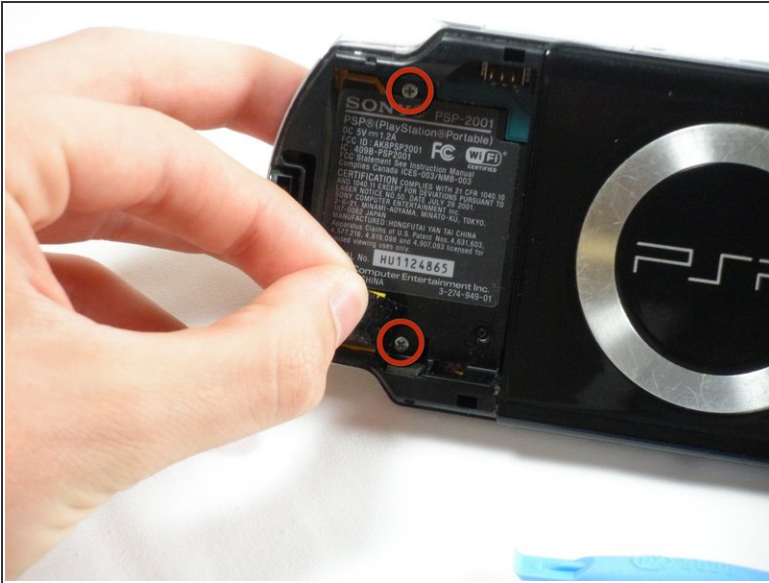
Step 2 — Front Casing



⚠ This step requires the removal of the warranty sticker. **Removing the sticker will void the warranty.** According to the FTC removing this will not void your warranty.

- Locate the sticker in the battery compartment labeled: *"En: Warranty Void if Seal Damaged."*
- Remove the sticker using the PSP Opening Tools.
- ⓘ Under the sticker is a 5mm Phillips screw needed in the next step.

Step 3



- Remove four 5 mm Phillips from the case.
- ⓘ If the screws stick in the case, you can use a magnetized screwdriver to draw them out.

Step 4



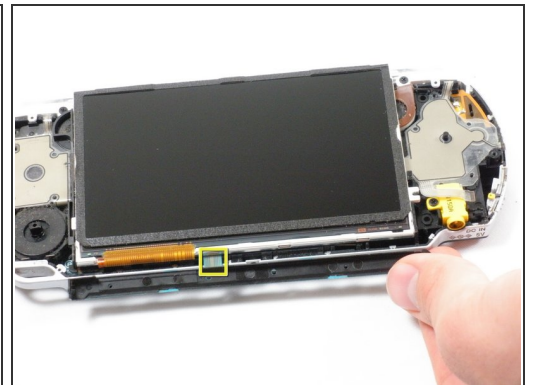
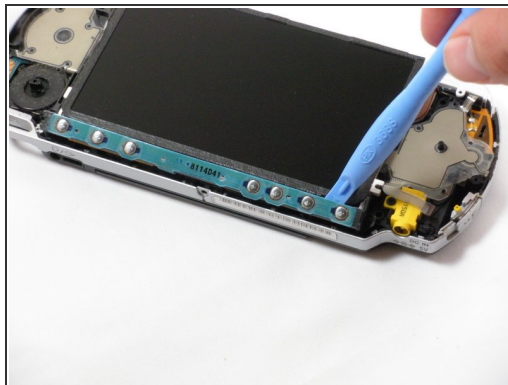
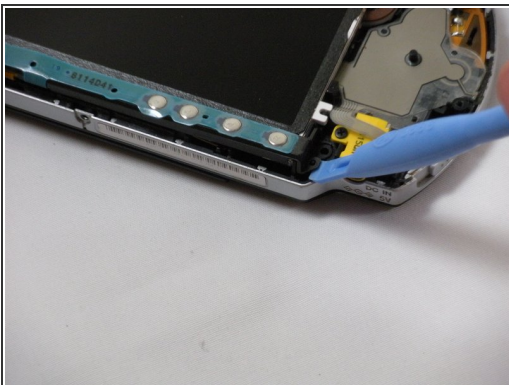
- Remove the following screws from around the bezel:
 - Two 4 mm Phillips
 - One 5 mm Phillips
- ☑ The two shorter 4 mm screws are on the top of the PSP; the longer 5 mm screw is on the bottom.

Step 5



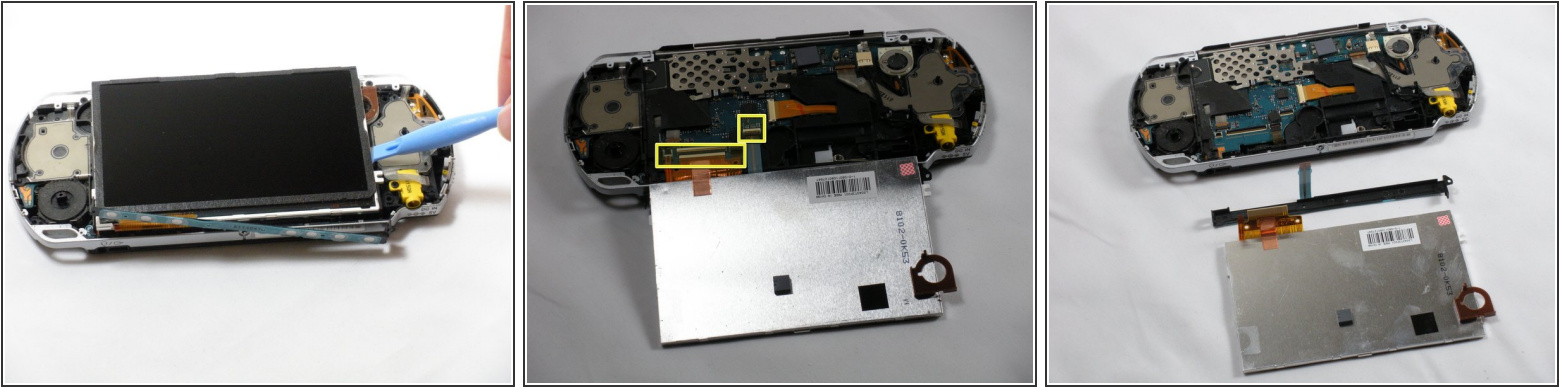
- Gently pry the front bezel away from the casing using a PSP opening tool.
- Start on the right hand side of the PSP bezel, and carefully work the tool around the side.
- ⓘ If you want to clean the control buttons or D-pad, you can easily pop them out once the faceplate is off and wipe them clean.

Step 6 — Display




- Remove the home bar by gently prying on the left and right sides of it with the opening tools. Lift the bar out of the device.
- ⚠ A ribbon cable connects the home bar to the logic board. Be careful not to damage the cable when removing the bar.

Step 7

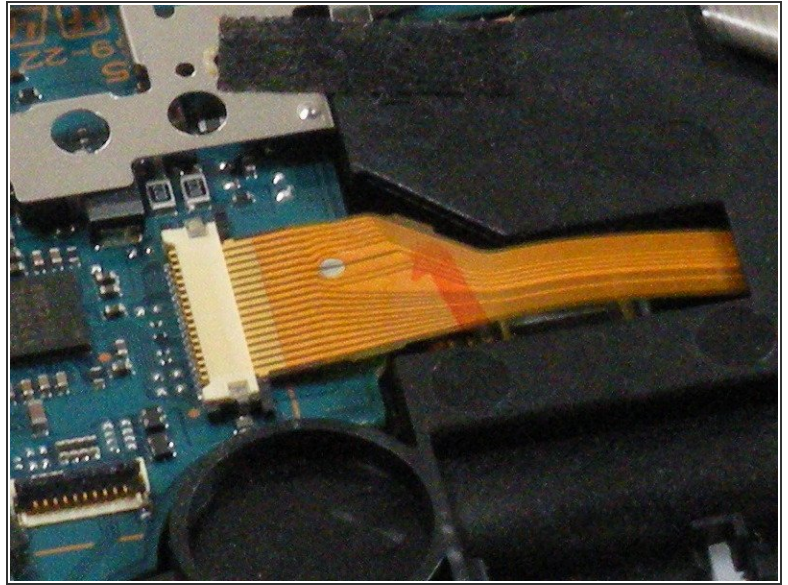
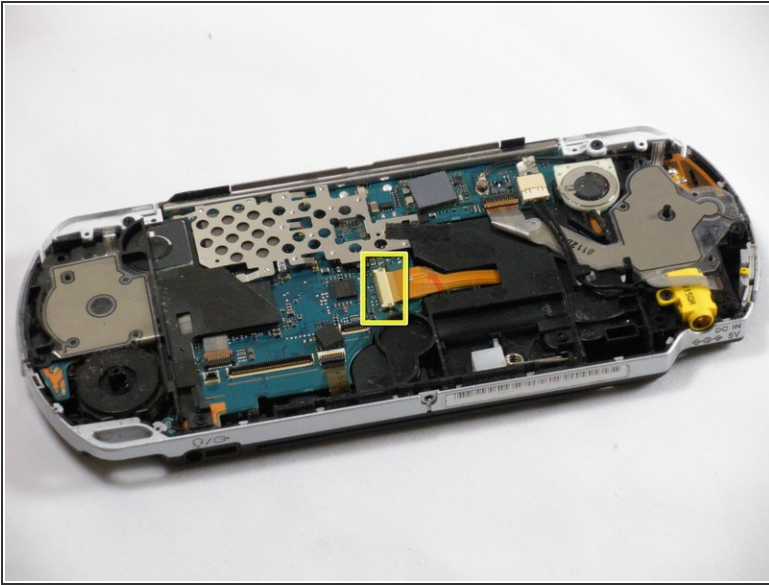


- With the home bar out of the way, gently pry up the display using the opening tools.

 There is another ribbon cable attached to the bottom of the LCD. Be careful not to damage either of the connectors when removing.

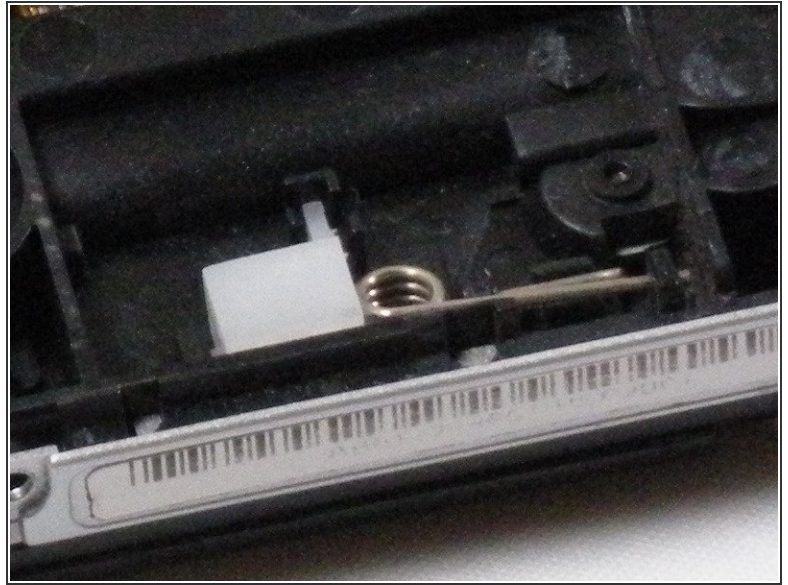
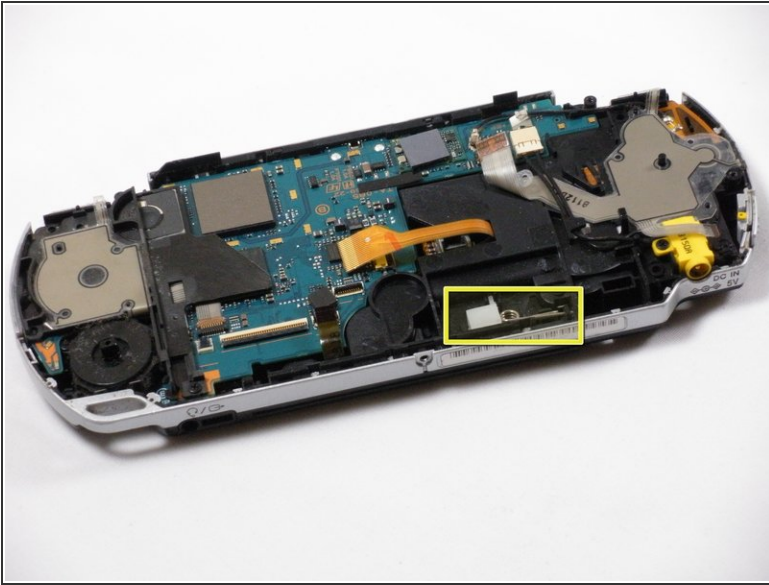
- Lift the black tabs of the ribbon cable connectors using a opening tool. Pull the ribbons out towards the bottom of the PSP to disconnect.
- Gently lift out the display.

Step 8 — UMD Drive



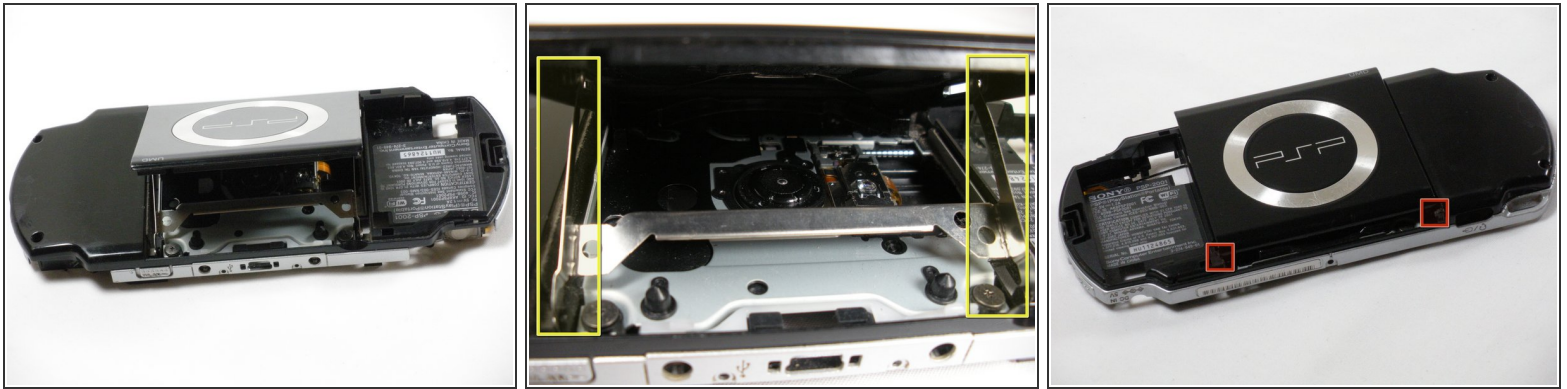
- Carefully disconnect the UMD drive ribbon cable from the logic board. Use the PSP opening tools to push the black tabs on the connector horizontally to free the cable.
- ⚠ This connector cannot be removed vertically. Doing so will damage the connector and/or ribbon cable.
- At this point it is useful to tape the loose metal parts with some masking tape so they don't fall out whilst you have the PSP the other way up.

Step 9



- With the front side of the PSP facing you, locate small white plastic box with metal spring attached.
 - Remove the white plastic box and spring from the PSP.
- i** If you do not fully remove the spring, there is a risk of breaking the UMD Drive door while disassembling.

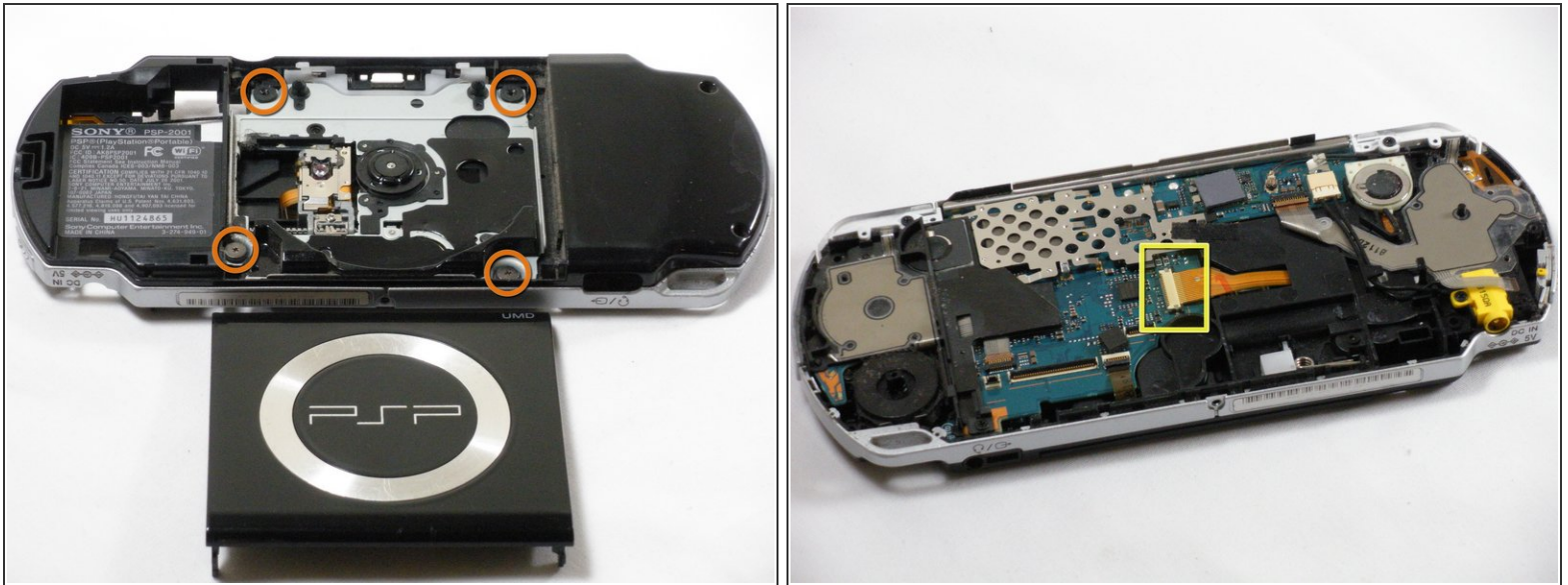
Step 10



- Position the PSP so that the UMD Device is facing upwards.
- With the UMD drive open, locate the aluminum UMD eject bracket. Pinch upper arms inwards to dislocate them from the UMD door.
- The UMD eject bracket can now be easily pulled out.
- Gently pry on the left side of the UMD door to remove it.

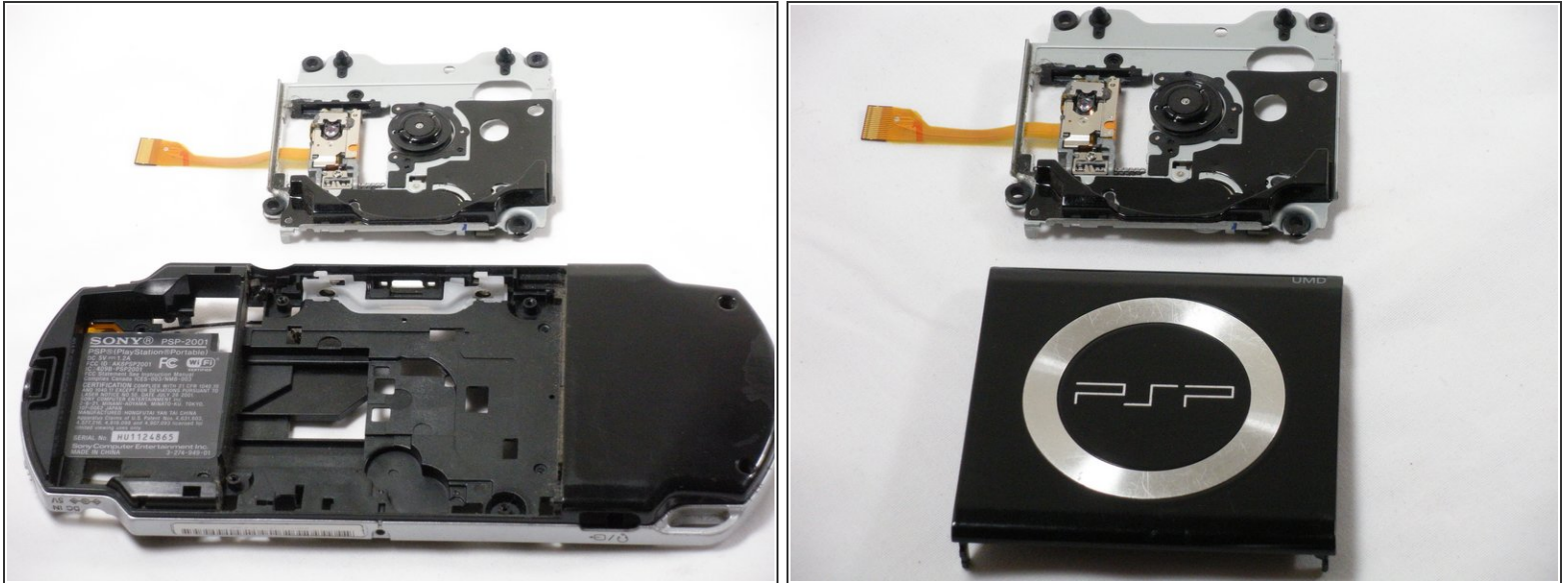
⚠ Be careful not to break off plastic knobs that secure the door in place, otherwise the UMD Drive will not open properly.

Step 11



- With the UMD door off, locate and remove the four 4mm Phillips screws that hold in the UMD Drive in place.
- ✦ If you have not disconnected the UMD ribbon cable, do so now, as to not damage it when removing the drive.
- ✦ If you have not disconnected the UMD ribbon cable do so now, as to not damage it when removing the drive.

Step 12



- With the four screws unscrewed, the UMD Drive can be removed. Gently lift the drive from its housing.
- ⚠ Make sure as to not damage the UMD ribbon cable (connecting it to the logic board) as you remove the drive.
- ⓘ This may be a good time to clean the laser head or any of the components inside the UMD Drive.

To reassemble your device, follow these instructions in reverse order.