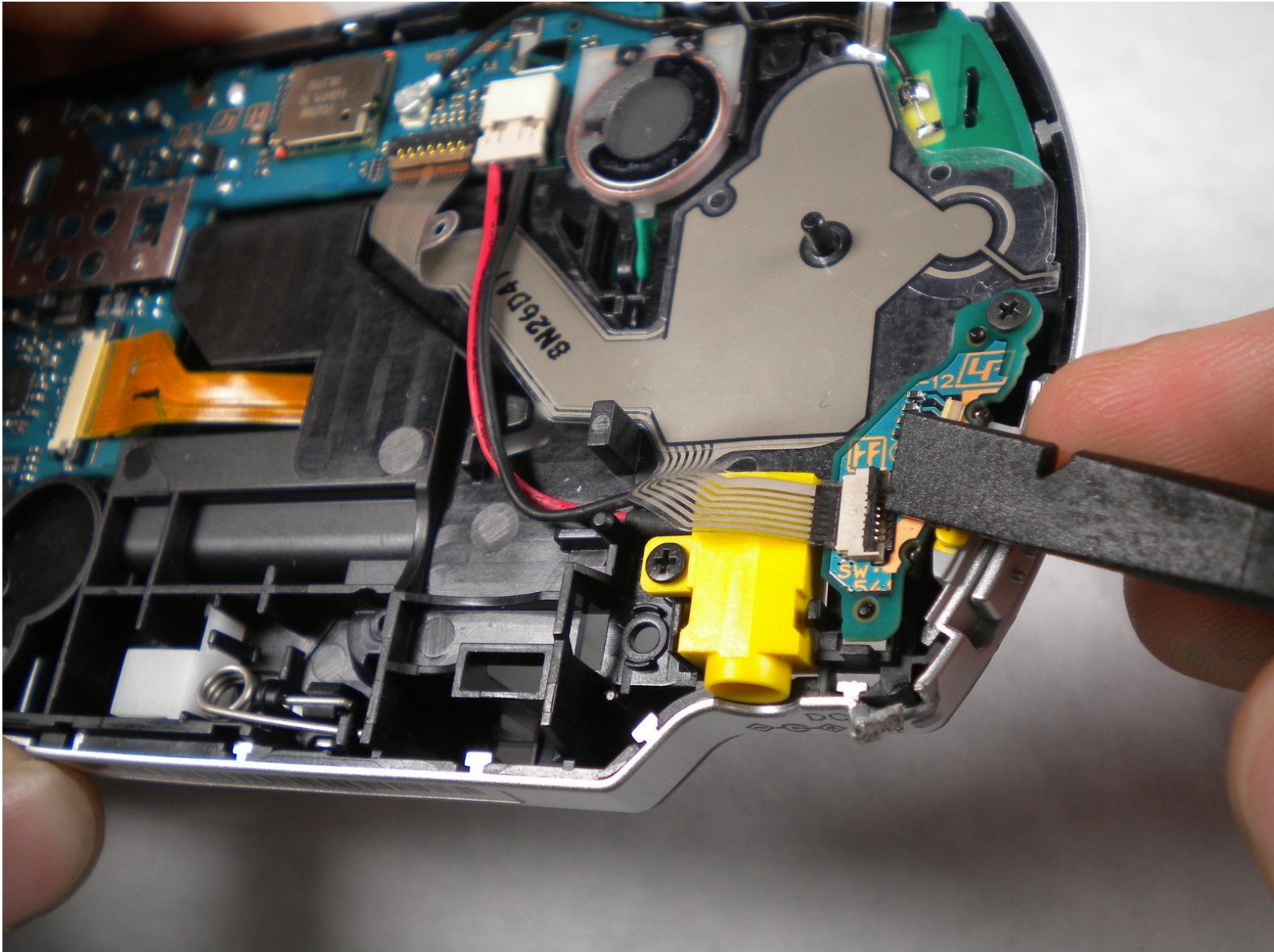




PSP 300x Power Jack Replacement

Written By: mbnewsom



INTRODUCTION

Guide for removing the power jack from a Sony PSP-3000



TOOLS:

- [Phillips #00 Screwdriver](#) (1)
- [Spudger](#) (1)



PARTS:

- [Sony PSP 3000 DC-In Power Jack](#) (1)
- [Sony PSP 2000 DC-In Power Jack](#) (1)

Step 1 — Battery



- Place the PSP face down and locate the battery cover on the left side of the device.
- Lift and remove the battery cover to reveal the battery.
- Remove the battery.

Step 2 — Casing



- Peel back the warranty sticker that is behind the battery with a spudger or your fingernail.

Step 3



- Unscrew all four screws from the back of the PSP with the Phillips #00 Screwdriver.
 - Two are located behind the battery's warranty sticker.
 - Two are located on the right side of the PSP.

Step 4



- Next, unscrew the two screws located at the top of the PSP.

Step 5



- Then, remove the single screw from the bottom edge of the PSP (which is positioned next to the barcode).

Step 6



- Slide the spudger in between the outer casing of the PSP, beginning at the "R" shoulder button, and gently pry off the casing.
- Remove the front casing completely.

Step 7 — LCD Screen



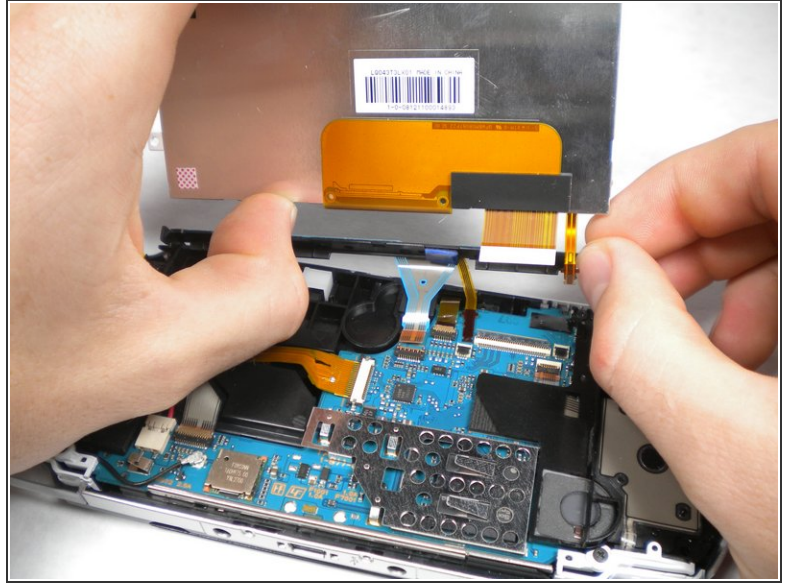
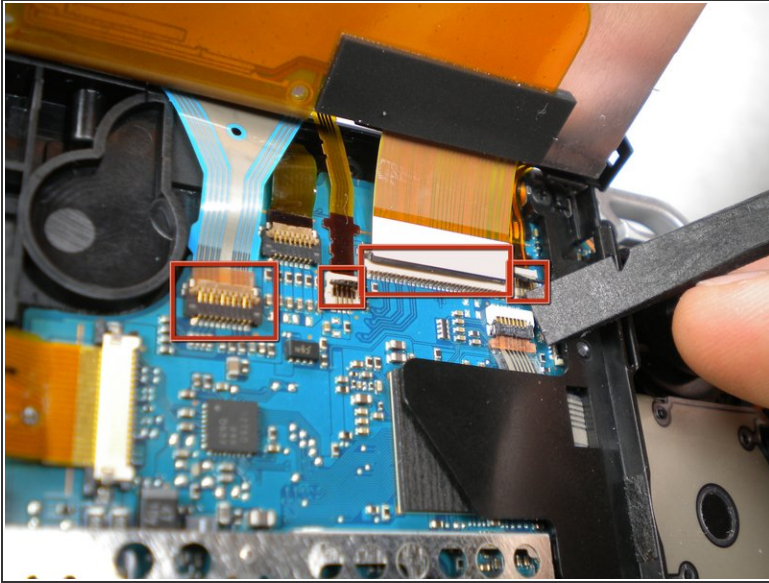
- Push the homebar to the right to release the tab located on the right side of the LCD screen.
- ⚠ DO NOT completely remove the homebar, as it is still connected by ribbon cables.

Step 8



- Slowly lift the LCD screen off the PSP starting at the top edge corner.
- ⚠ Again, the LCD screen is attached by ribbon cables, so do not remove it completely.
- ⓘ Orientation of PSP is flipped in photo.

Step 9



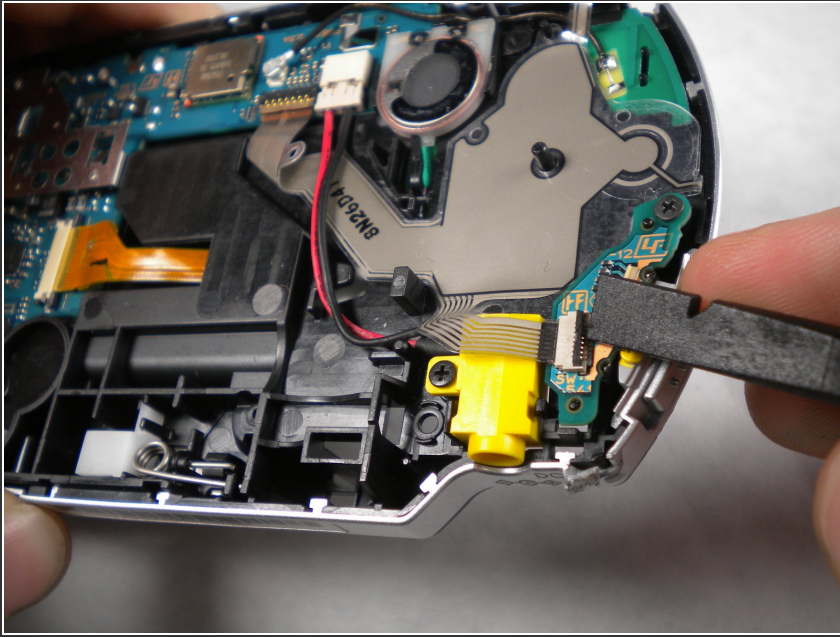
- Flip the small brown locks on the four ribbon cable connectors up using a spudger or fingernail.
- Pull all four ribbon cables out.
- Now remove the LCD screen and homebar from the PSP.

Step 10



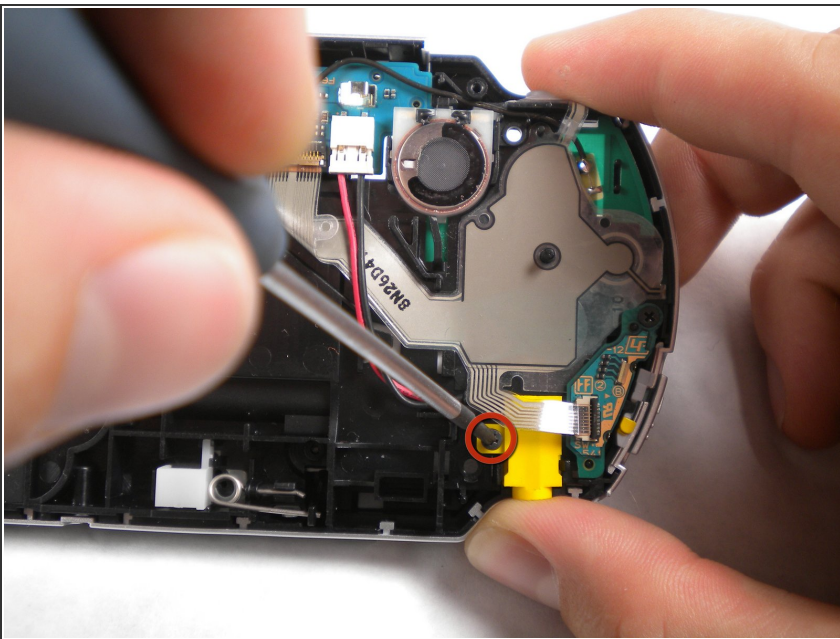
- Remove the metal tab that lies above the LCD screen.
- ☑ Upon reassembly, make note that the stamped lettering faces down, and the large tab fits just above the motherboard to the right hand side of the left trigger.

Step 11 — Power Jack



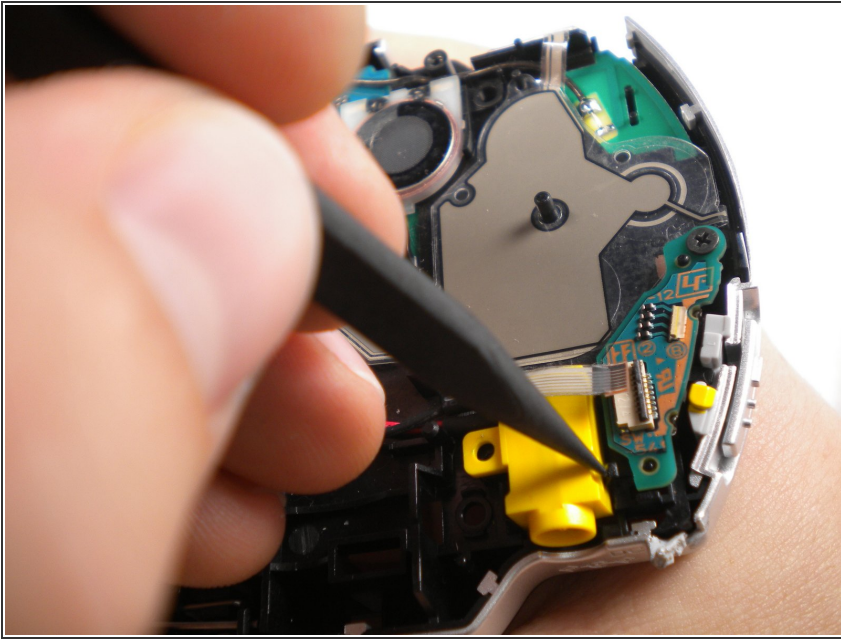
- Flip up the lock and detach the ribbon cable above the power jack.

Step 12



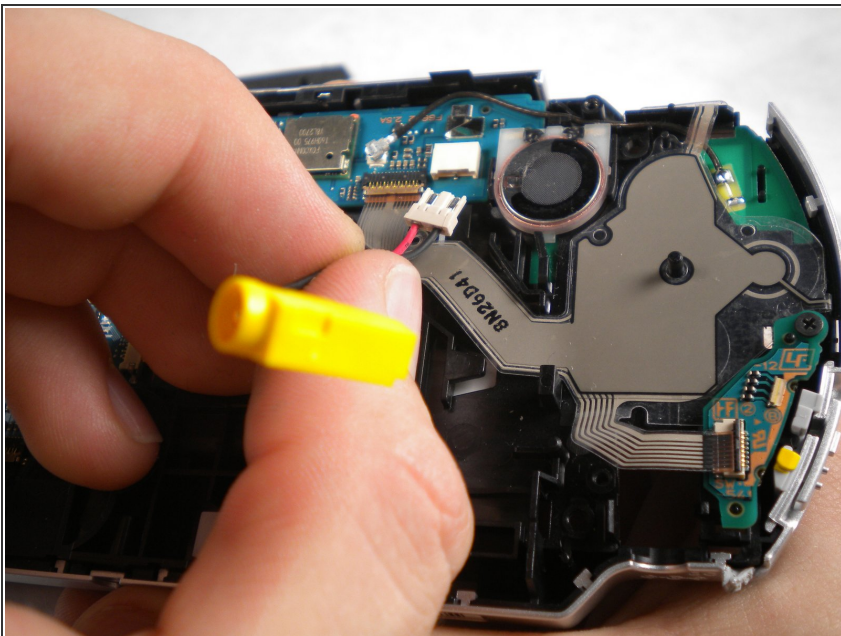
- Remove the screw from the power jack.

Step 13



- Carefully bend back the black tab holding the power jack in place and start pulling the jack up to release it from this clip.

Step 14



- Pull the plug connecting the power jack to the motherboard.
- Remove the power jack.

To reassemble your device, follow these instructions in reverse order.