



PSP 300x Teardown

Written By: mbnewsom



INTRODUCTION

This teardown guide shows step-by-step how to take apart your PSP 3000

TOOLS:

- [Phillips #0 Screwdriver](#) (1)
 - [Spudger](#) (1)
-

Step 1 — PSP 300x Teardown



- The first picture is a view of the front of the PSP-3000. The second picture is of the back.

Step 2



- Lift the covering from the left side on the back of the PSP to reveal the battery.
- Pull up on the top at the top of the battery with your fingernail and remove it.

Step 3



- Using a spudger or fingernail (spudger set available at iFixit) <http://www.ifixit.com/Tools/Metal-Spudger...> peel back the warranty sticker that was behind the battery.
- Using a Phillips #0 screwdriver (screwdriver available at iFixit <http://www.ifixit.com/Tools#0-Phillips>), Unscrew all four screws from the back of the PSP.
 - Two from behind the battery.
 - And two on the right side of the PSP.

Step 4



- Unscrew two screws from the top of the PSP.
- Turn the PSP around, and unscrew a single screw from the bottom edge.

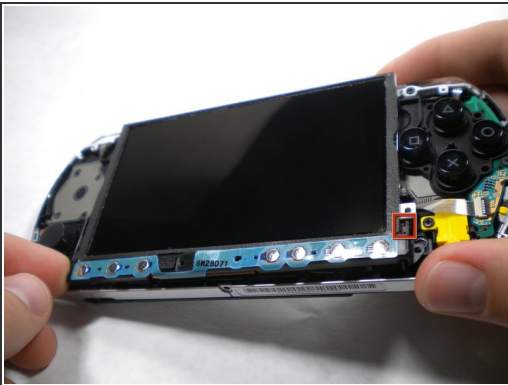
This document was generated on 2019-09-17 07:20:15 AM (MST).

Step 5



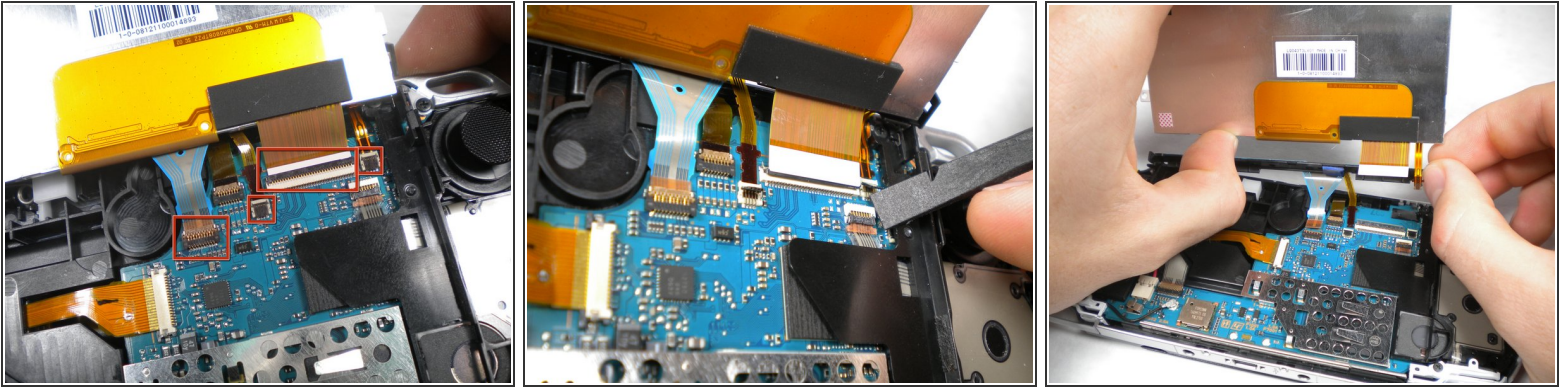
- Starting from the 'R' trigger, slide the spudger in between the outer casing the the PSP, and gently pry off the casing.
- Remove the outer casing completely.

Step 6



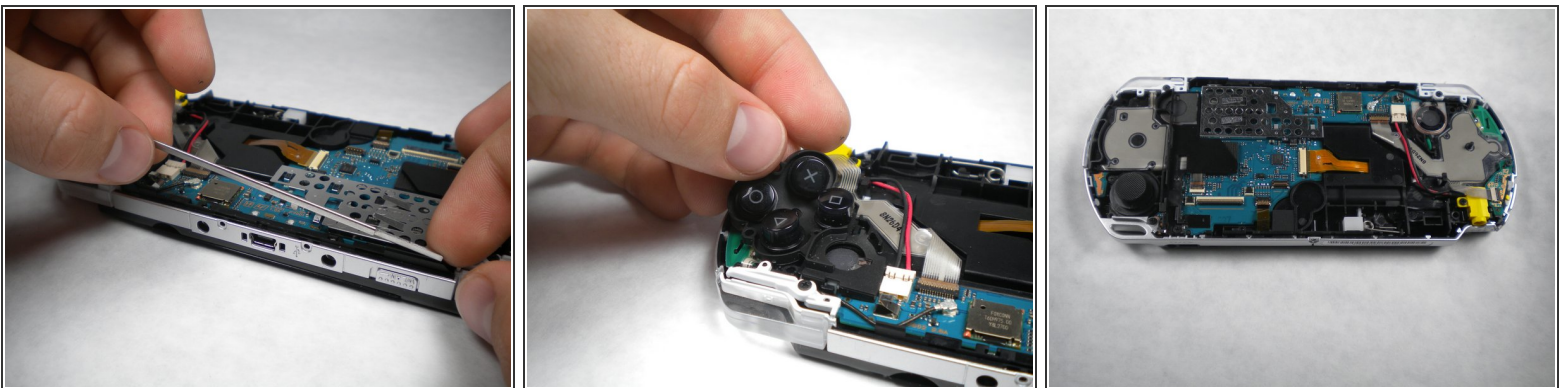
- Push the homebar to the right to release the tab on the right side of the LCD screen.
- ⚠ DO NOT completely remove the homebar, as it is still connected by ribbon cables.
- Slowly begin to lift the LCD screen off the PSP from the top edge.
- ⚠ Again, the LCD screen is attached by ribbon cables, so do not remove it completely.

Step 7



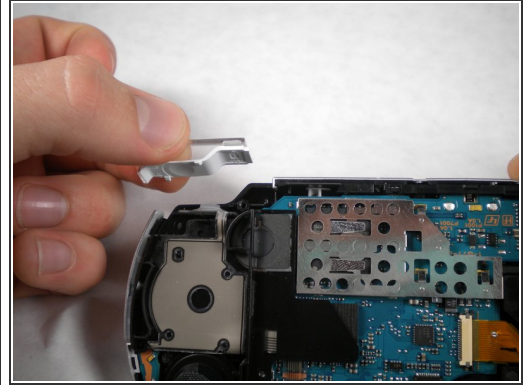
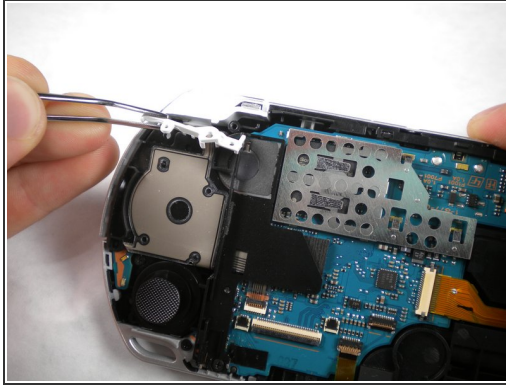
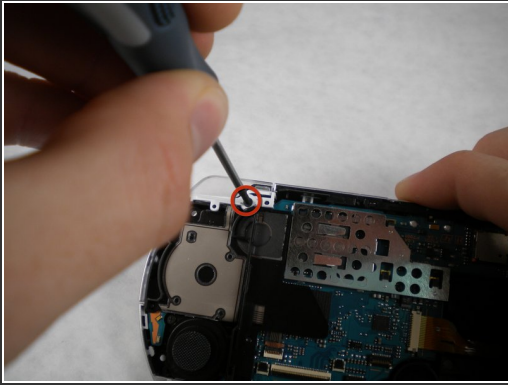
- Using a spudger or fingernail, flip the small brown locks on the four ribbon cable connectors up.
- **WARNING!** Be carefull removing the small ribbion from the LCD connector, it is very delicate. Using a spudger lift the black plastic up, NOT the white part on the connector!
- Pull all four ribbon cables out, and remove the LCD screen and homebar from the PSP.

Step 8



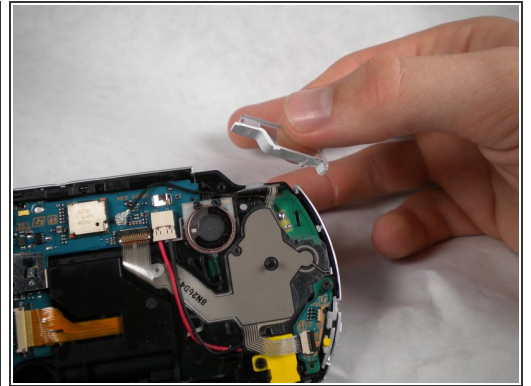
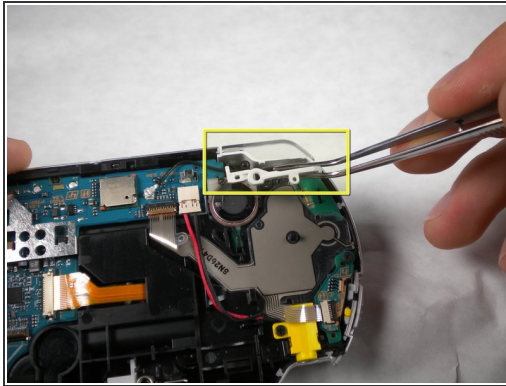
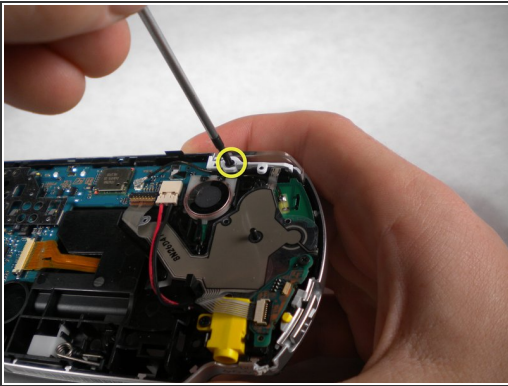
- Remove the small metal bar from the top edge of the PSP. (This was helping to hold the LCD screen in place)
- Remove the button pad from the PSP.

Step 9



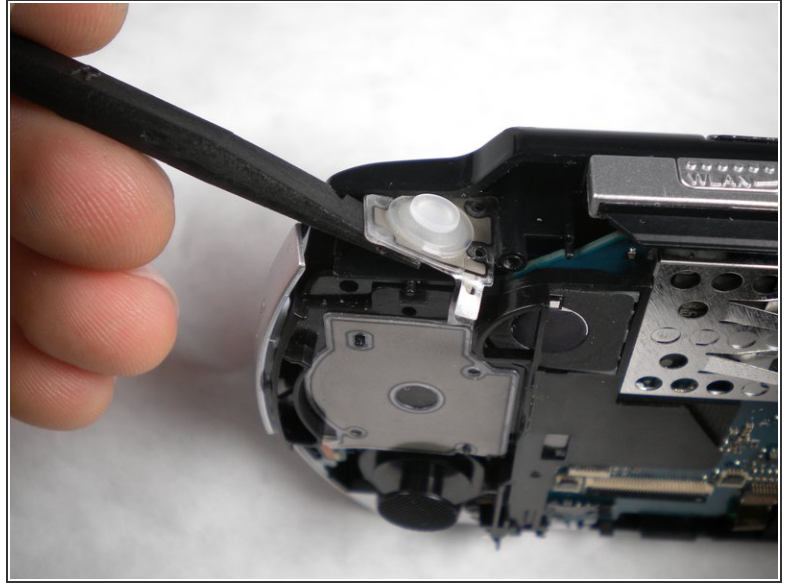
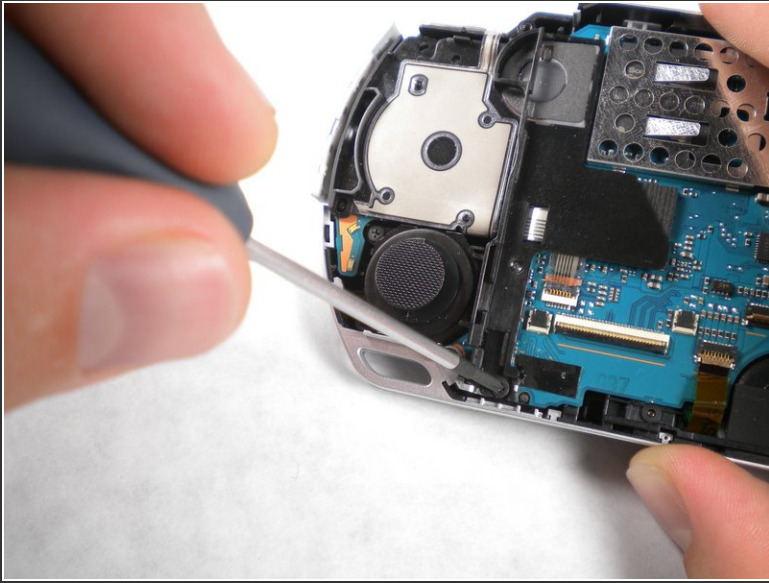
- Unscrew the the screw securing 'L' trigger.
- Remove the white plastic piece that holds the 'L' trigger in place.
- Remove the 'L' trigger from the PSP.

Step 10



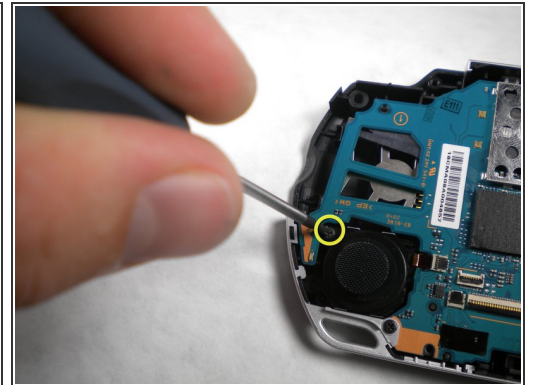
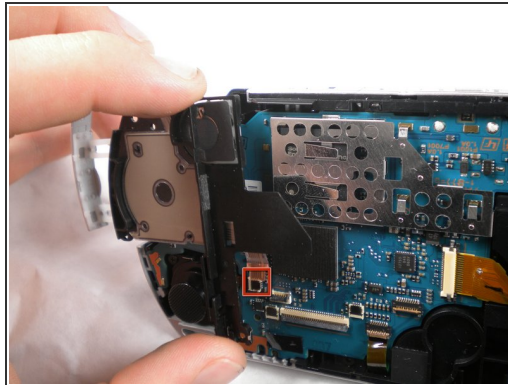
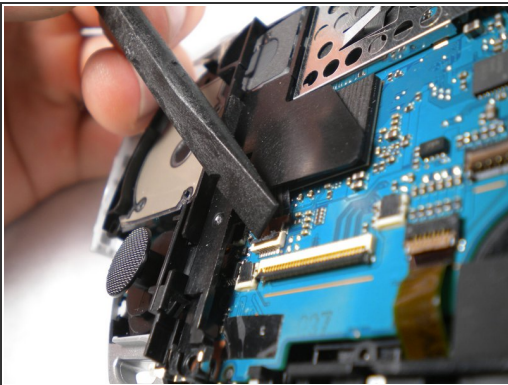
- Unscrew the 'R' trigger and remove both pieces. (Refer to step nine by applying the procedures to this, the right, side)

Step 11



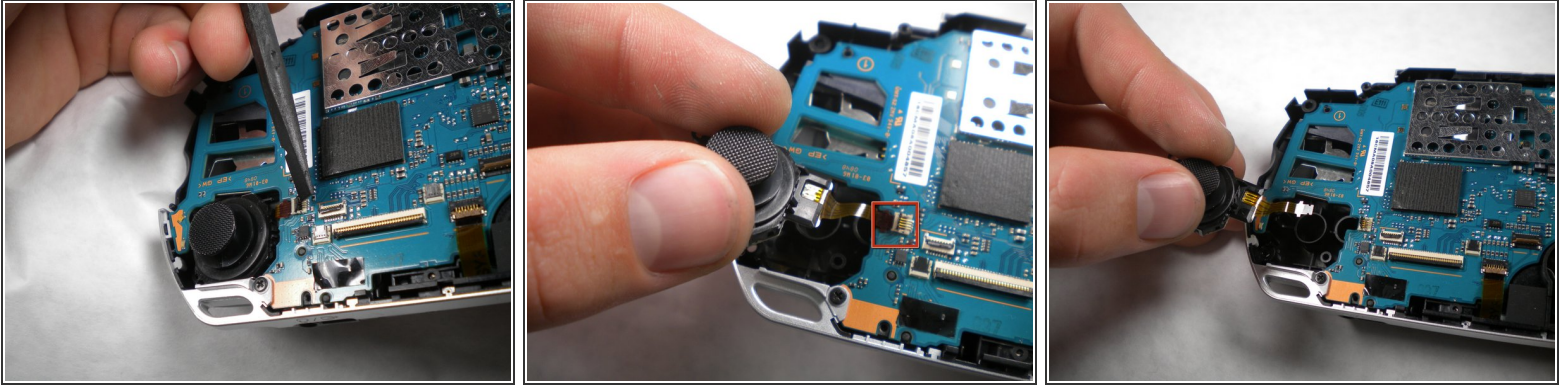
- Remove the screw from the bottom left edge.
- Being careful not to break the ribbon cable, use the spudger, to carefully peel the adhesive button from below the 'L' trigger.

Step 12



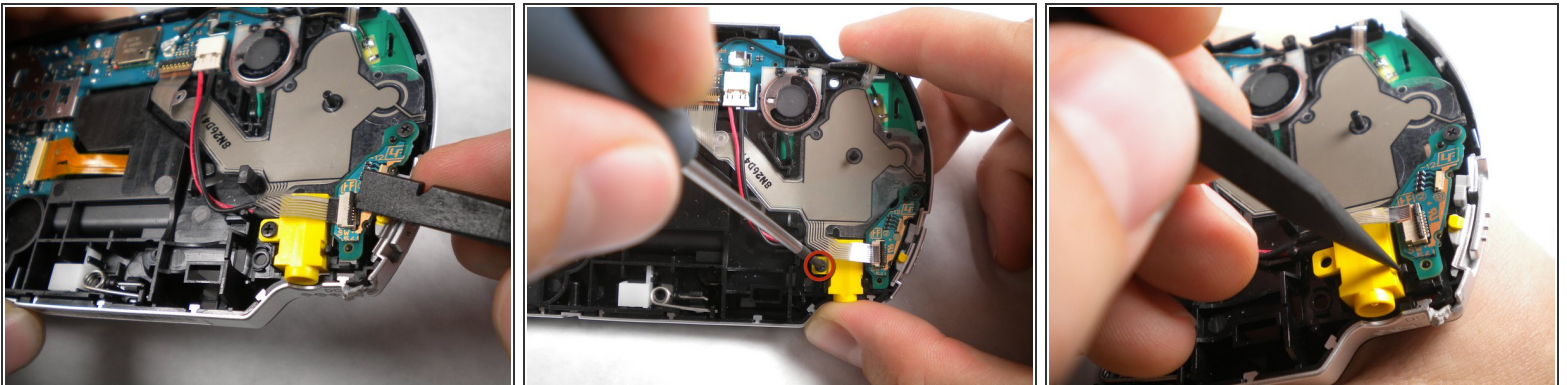
- Using the spudger or fingernail, flip up the brown lock on the ribbon cable.
- Remove the cable from the connector and remove the entire black piece from the PSP.
- Remove the screw from the analog stick.

Step 13



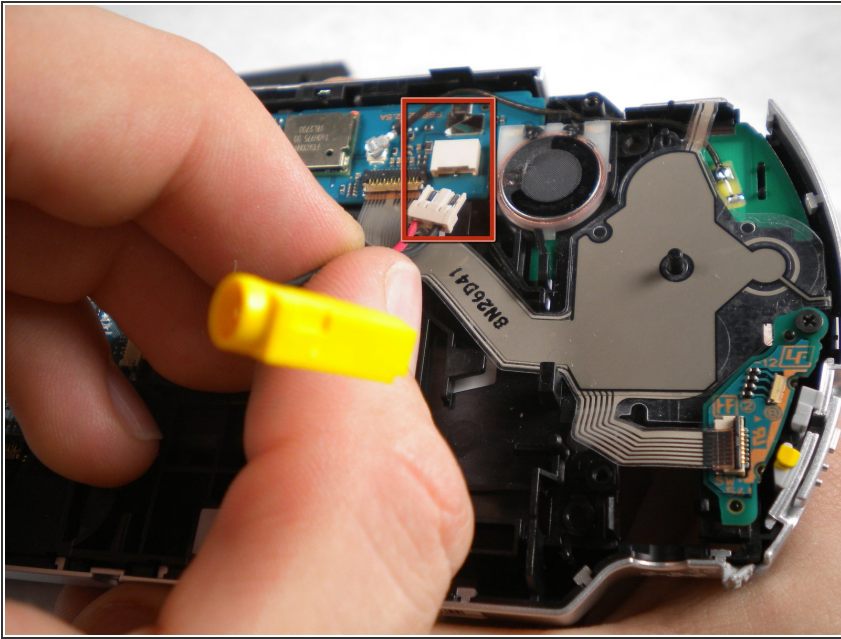
- Unlock and remove the ribbon cable connection the analog stick to the main board.
- Remove the analog stick from the PSP.

Step 14



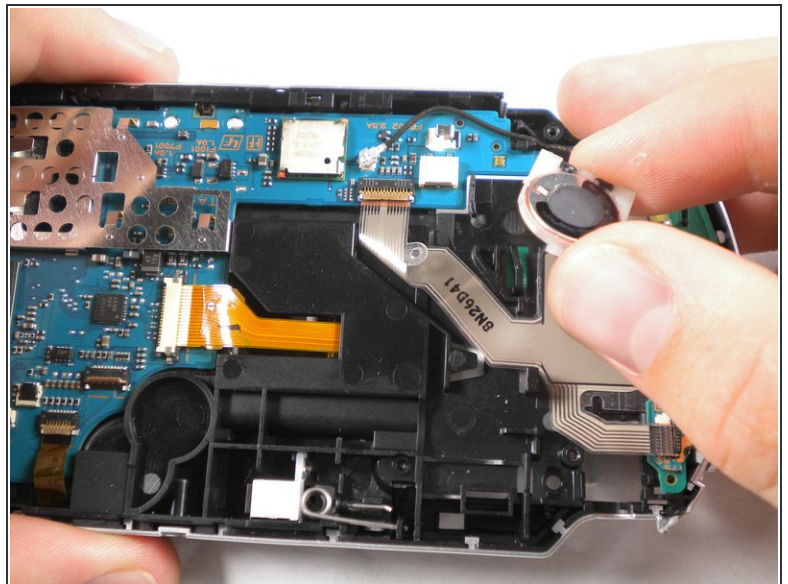
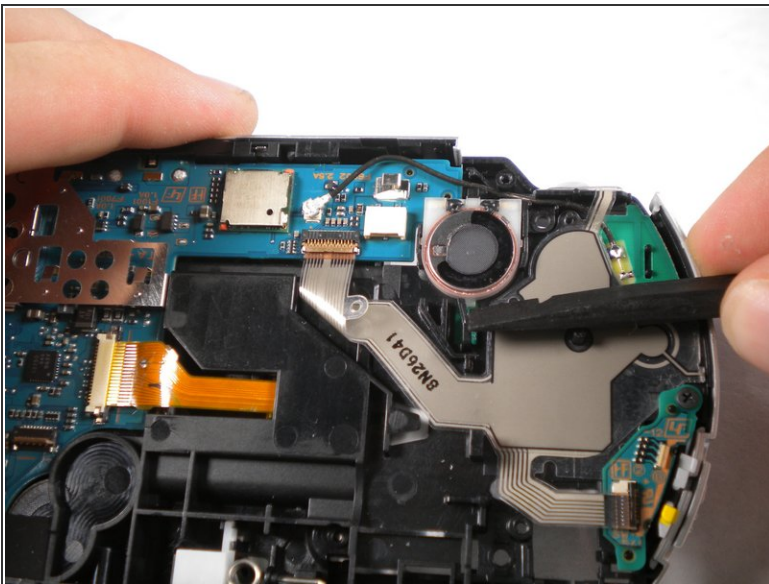
- Unlock and remove the ribbon cable from the power switch on the right side of the PSP.
- Unscrew and remove the screw from the yellow power jack.
- Carefully bend back the black tab holding the power jack in place and start pulling the plug up to release it from this clip.

Step 15



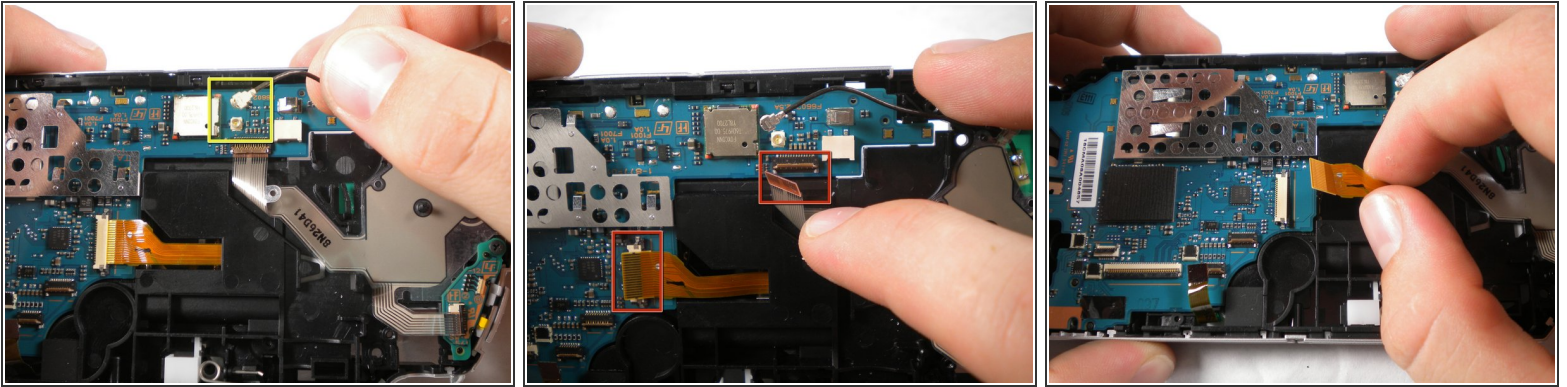
- Pull the plug connecting the power jack to the motherboard.
- Remove the power jack.

Step 16



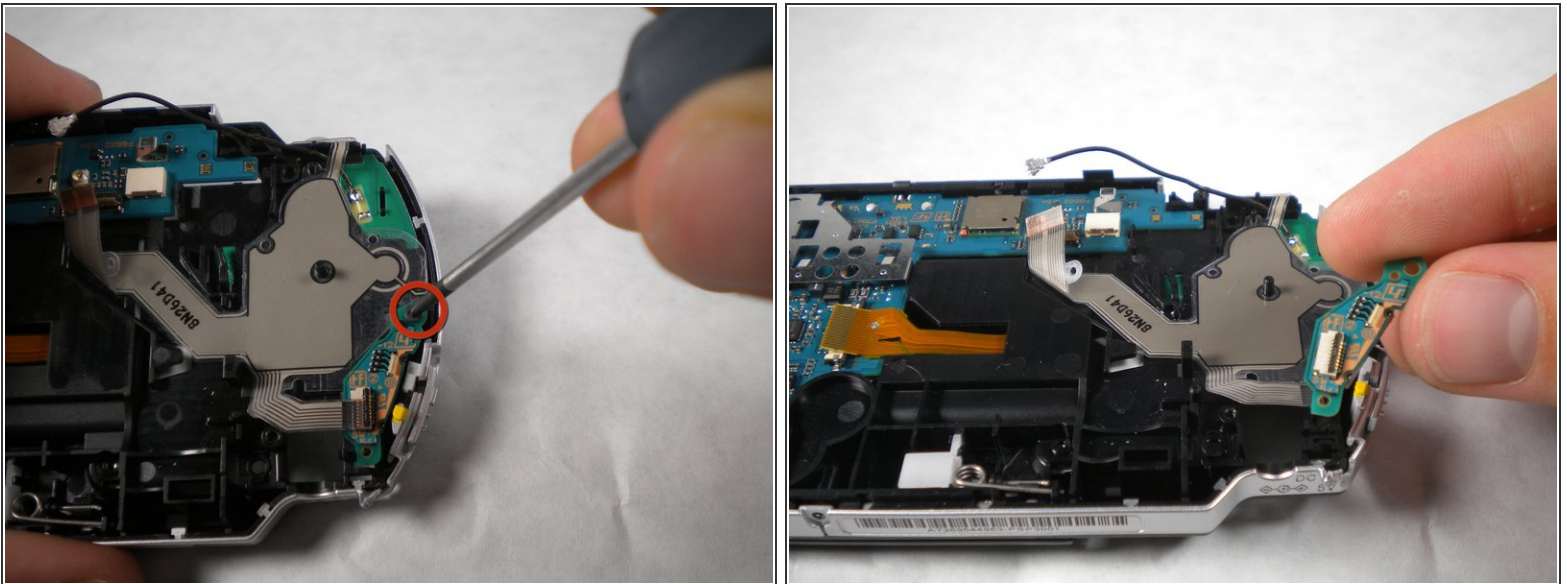
- Push the black tab at the bottom of the speaker over.
- The speaker should pop out of place, and you should be able to remove it easily.

Step 17



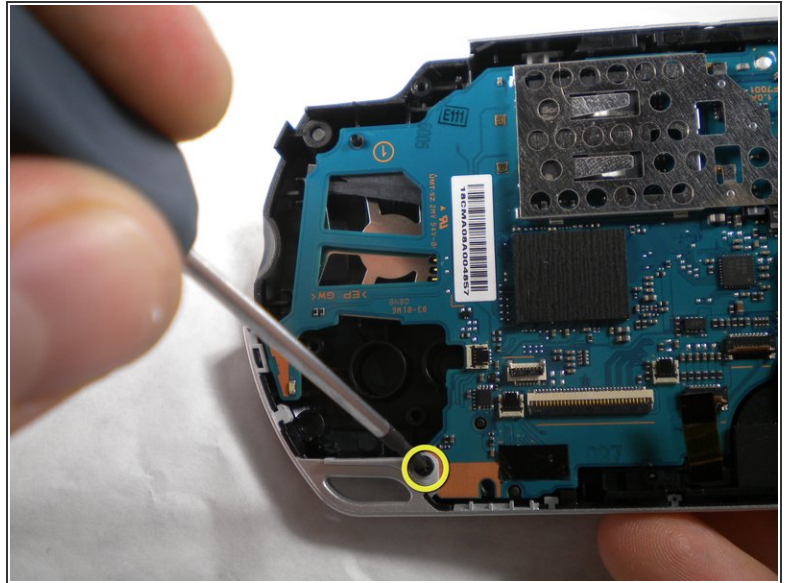
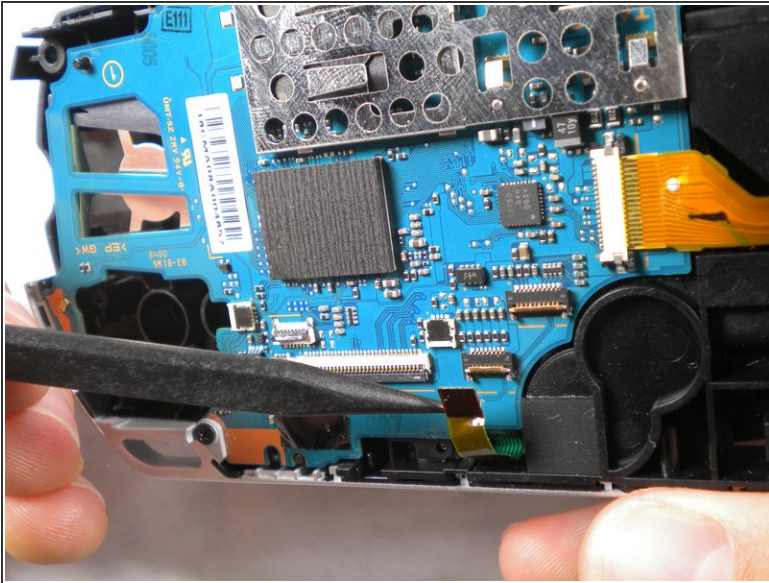
- Pull the wireless antenna cable from its plug.
- Unlock and remove both ribbon cables from the mother board.

Step 18



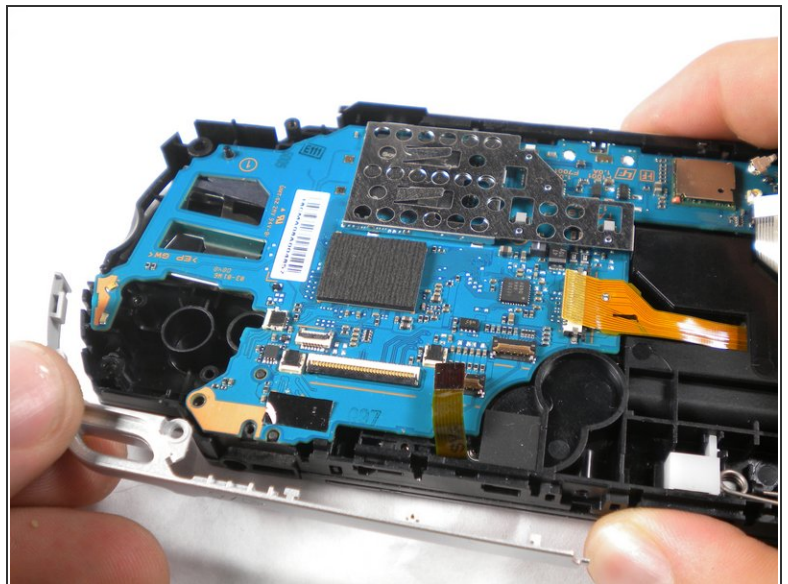
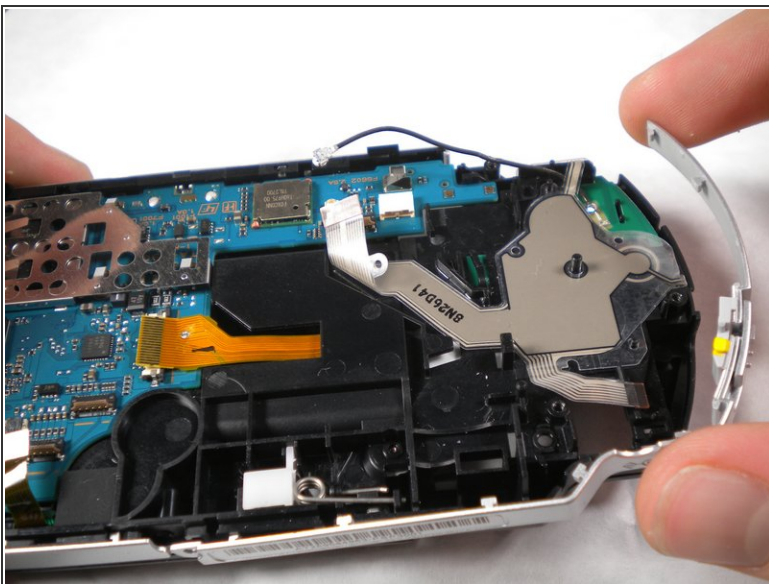
- Remove the screw from the power switch board.
- Remove the power switch assembly/board.

Step 19



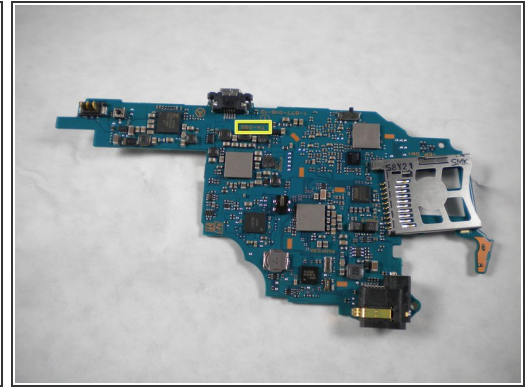
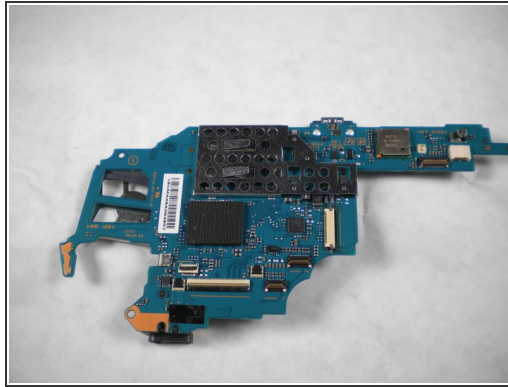
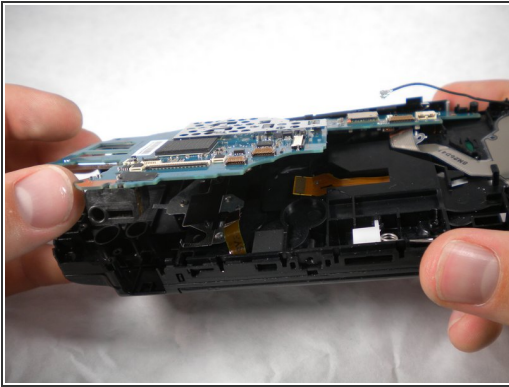
- Unlock and remove one last ribbon cable from the bottom edge of the PSP.
- Remove the screw from the bottom left corner of the PSP.

Step 20



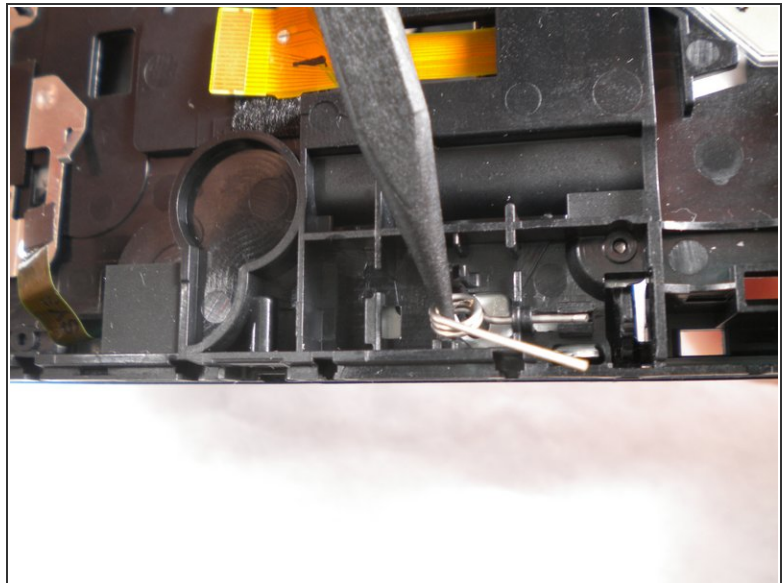
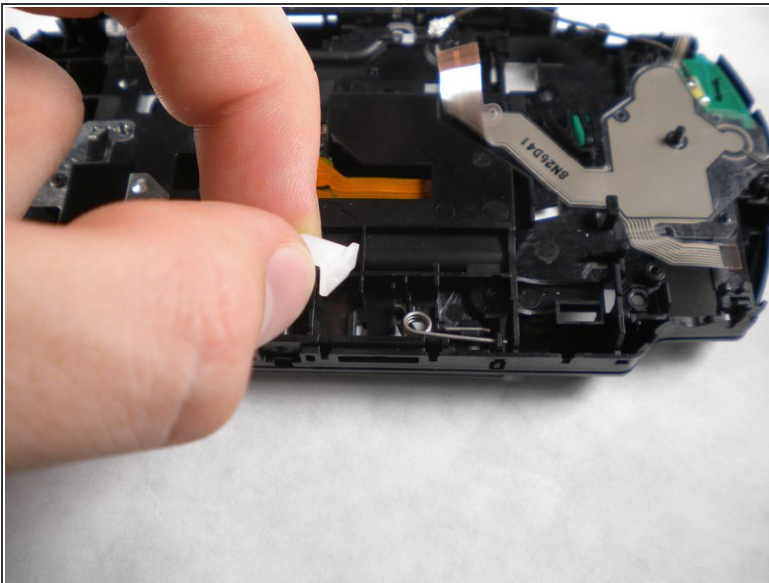
- Lift the silver rim on the right side of the PSP up and off.
- Lift the silver rim on the left side of the PSP up and off.

Step 21



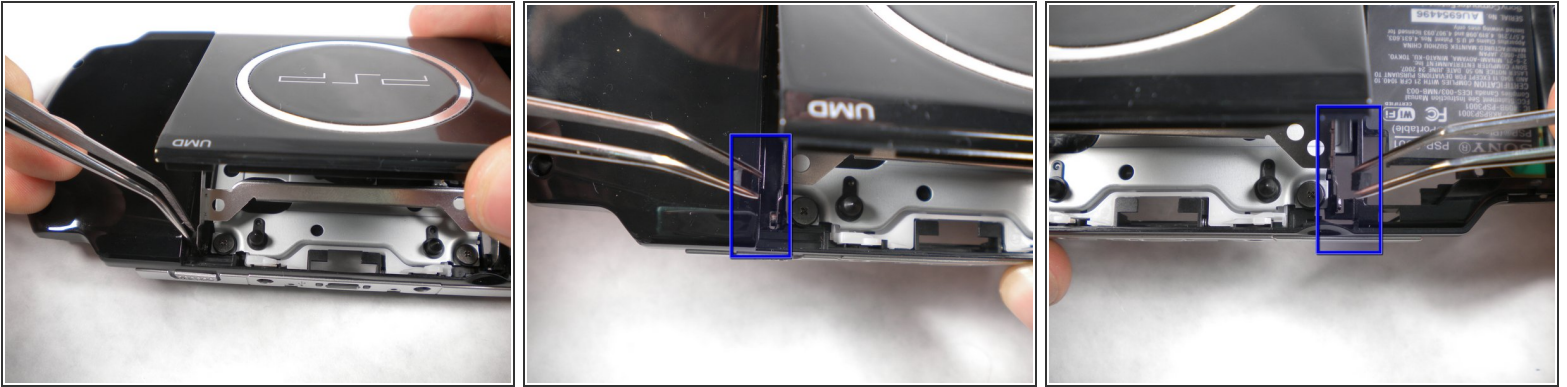
- Lift the motherboard up slowly starting from the bottom of the PSP, being careful not to damage the port on top.
- Pull the motherboard out and remove it from the PSP.
 - The specific motherboard model of this PSP-3000 is TA-090

Step 22



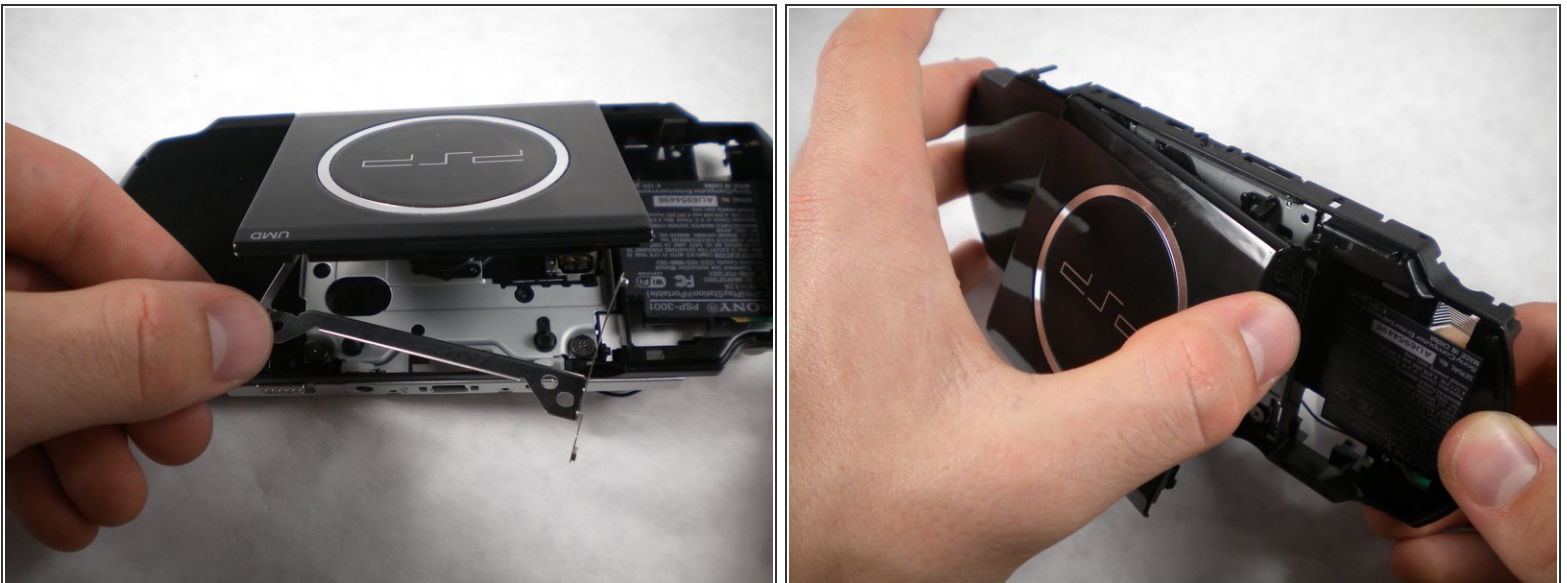
- On the top of the back of the PSP, pull the white plastic piece out.
- Pull the spring out and remove it from the PSP.

Step 23



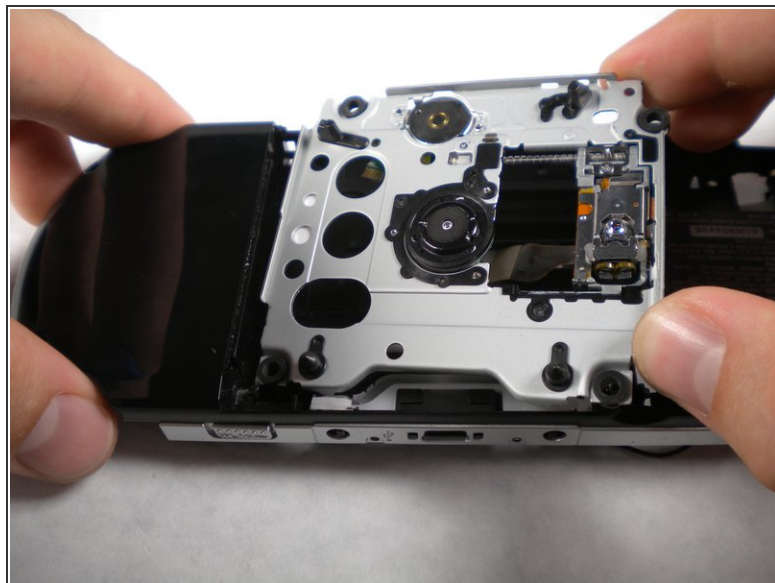
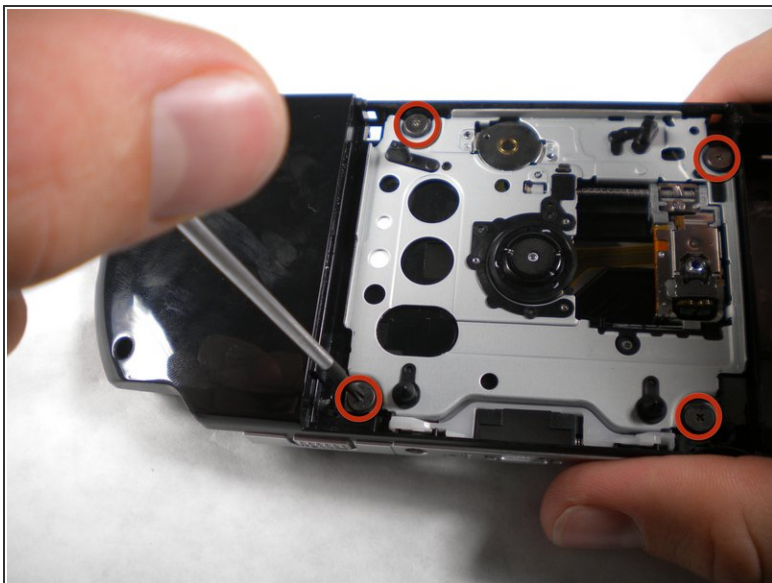
- Open the UMD (disk drive) and locate the two small black rubber squares wedged in the space between the casing and the metal drive hinge on either side.
- Pull these out using a pair of tweezers.

Step 24



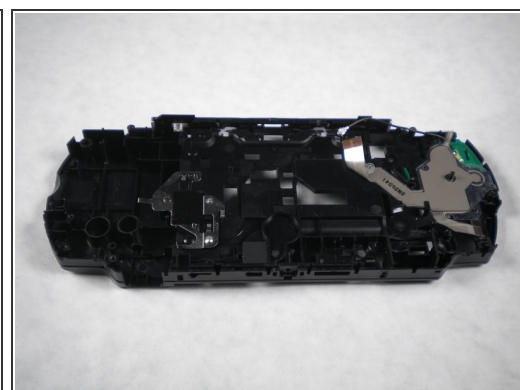
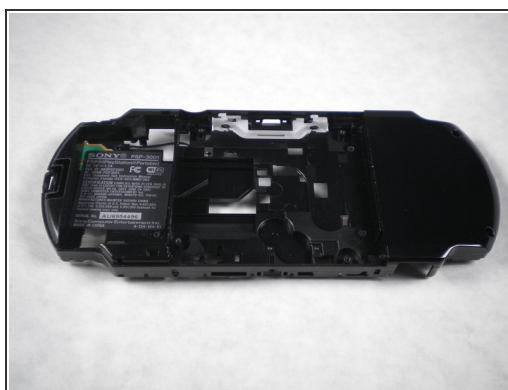
- Remove the metal piece from the drive.
- Grabbing the PSP with both hands, gently pinch the UMD lid towards the right side (the side without the battery).
- Pull up and the the left side carefully to remove the lid from the PSP. (The casing may have to flex a little bit to allow this)

Step 25



- Remove the four screw from the UMD drive.
- Remove the drive.

Step 26



- Enjoy the eye-candy.

To reassemble your device, follow these instructions in reverse order.