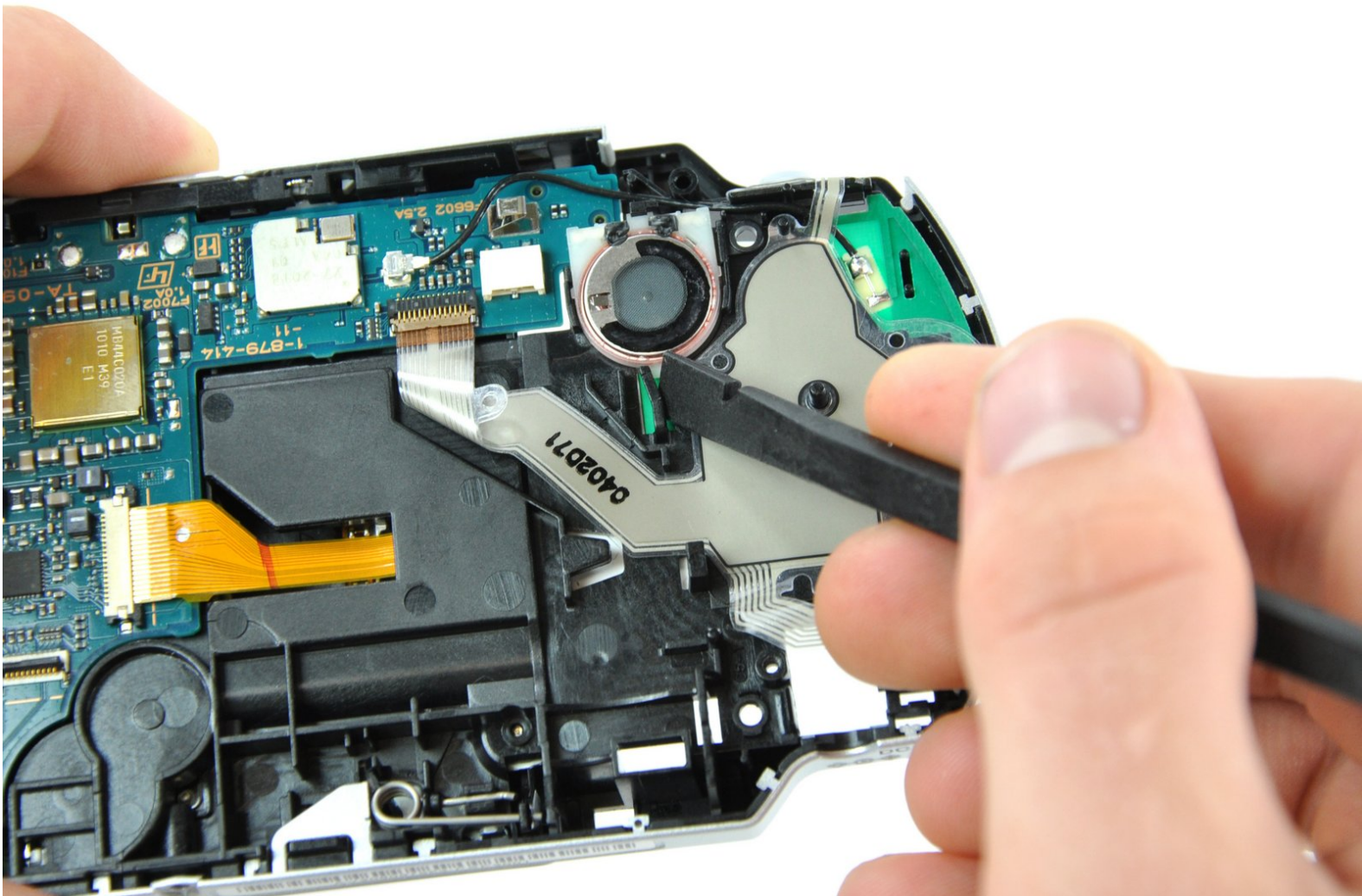




# PSP 300xc Motherboard Replacement

Replacing the motherboard for the PSP 300xc.

Written By: Matthew Newsom



## INTRODUCTION

Something unmentionably horrible has happened to your PSp 300xc. The motherboard is fried for one reason or another, but have no fear! This guide allows you to replace the dead board with a brand new one!



### TOOLS:

- [Phillips #00 Screwdriver](#) (1)
- [Spudger](#) (1)



### PARTS:

- [Sony PSP 300xc TA-093 Motherboard](#) (1)

## Step 1 — Battery



- Press the button securing the battery door to the PSP 300xc, and lift the battery door off.
- Lift the battery out of the PSP.

## Step 2 — Front Case



- Use a spudger or your fingernail to remove the warranty sticker stuck to the inside of the battery tray



### Step 3



- Remove four Phillips screws from the back of the PSP.

### Step 4



- Remove two Phillips screws from the top of the PSP.

## Step 5



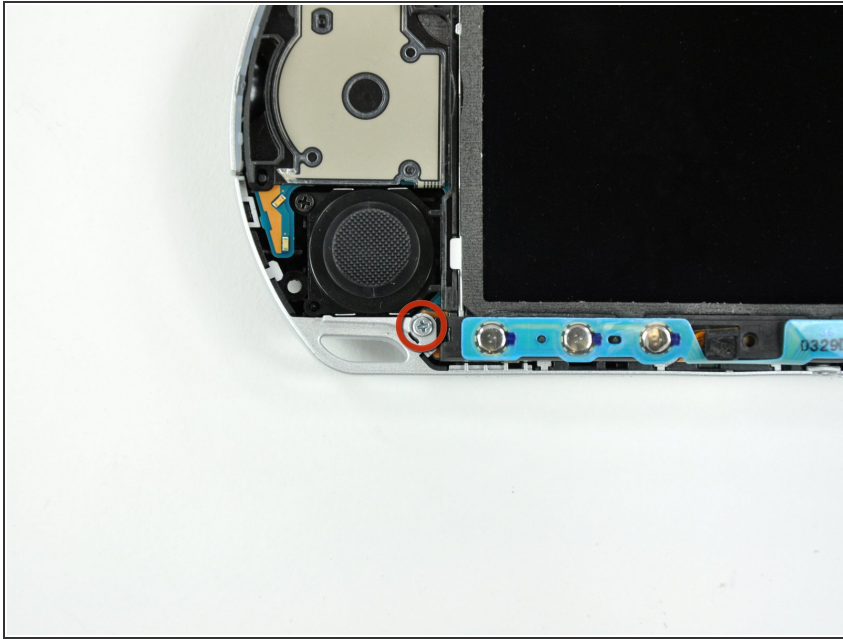
- Remove a single screw from the bottom edge of the PSP.

## Step 6



- Insert a spudger between the front case and PSP, and slide the spudger along the perimeter of the front case to remove it.

## Step 7 — LCD



- Remove a single Phillips screw securing the home bar to the PSP 300xc.

## Step 8

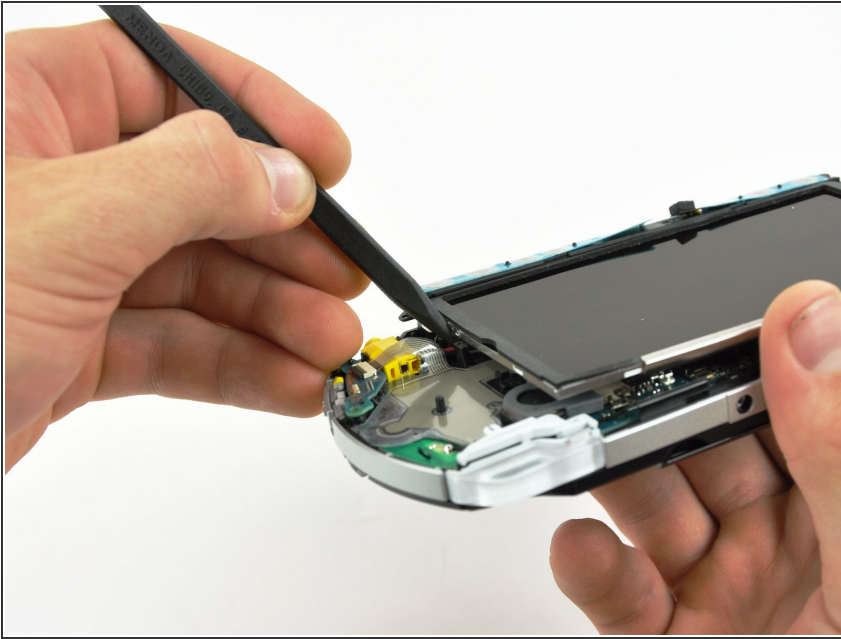


- Push the home bar to the right about 1cm to release a tab, and begin to lift the right end of the home bar slightly.

⚠ Do not attempt to remove the home bar yet, it is still attached to the PSP 300xc.



## Step 9



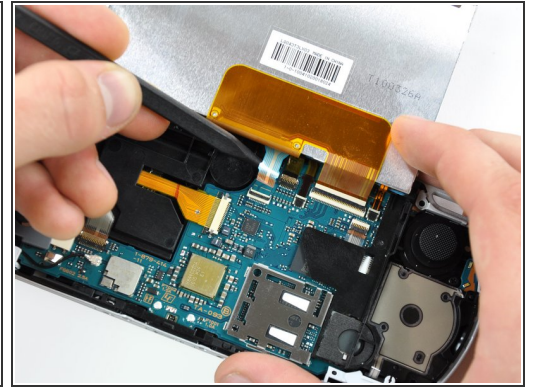
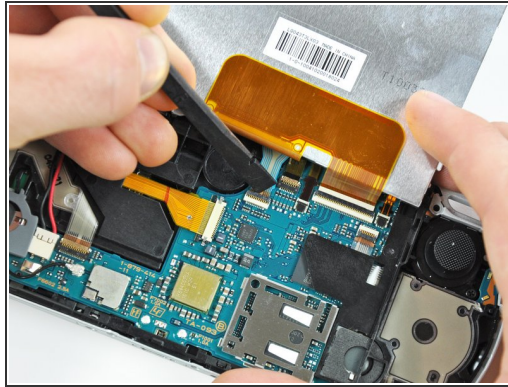
- Insert a spudger under the LCD, beside the black plastic tab.
- Push the LCD to the left and pry up to release the left edge of the LCD from under the plastic tab.

## Step 10



- Insert a spudger under the LCD, beside the black plastic tab.
- Push the LCD to the right and pry up to release the right edge of the LCD from under the plastic tab.

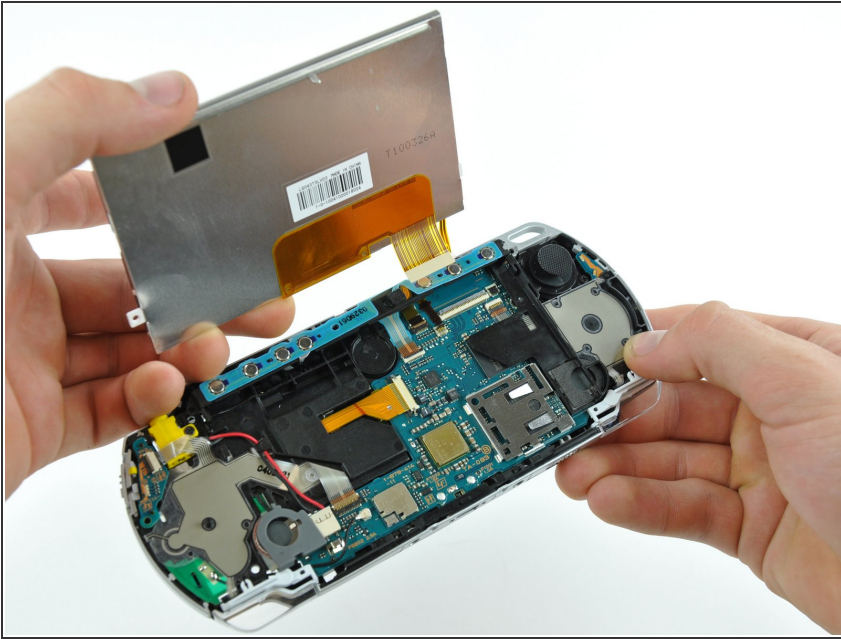
## Step 11



- Rotate the LCD away from the PSP to reveal the LCD and home bar ribbon cables.
  - Use your fingernail or the edge of a plastic opening tool to flip up the retaining flap on the following four ZIF connectors:
    - Home bar cable
    - Microphone cable
    - LCD display data cable
    - Touchscreen cable
- ⚠ Be sure you are prying up on the retaining flap, not the socket itself
- After flipping up the locking tabs on all four connectors, use your fingers or a spudger to gently pull the cables straight out of the connectors.

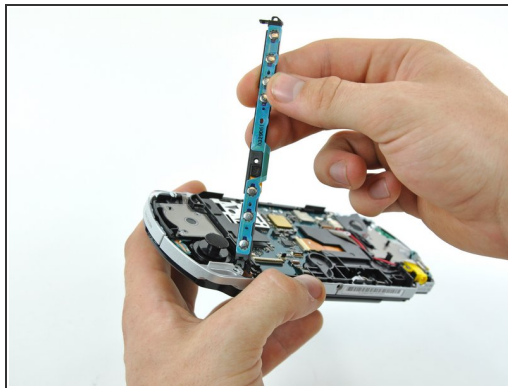
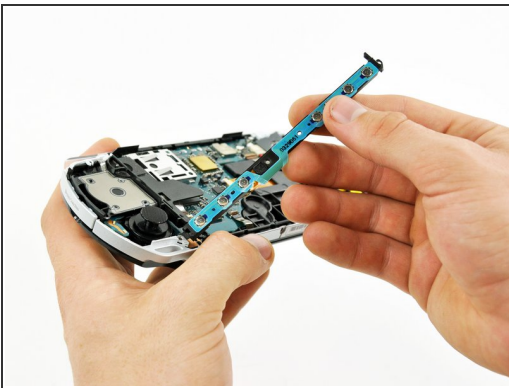


## Step 12



- Remove the LCD from the PSP 300xc.

## Step 13 — Home Bar

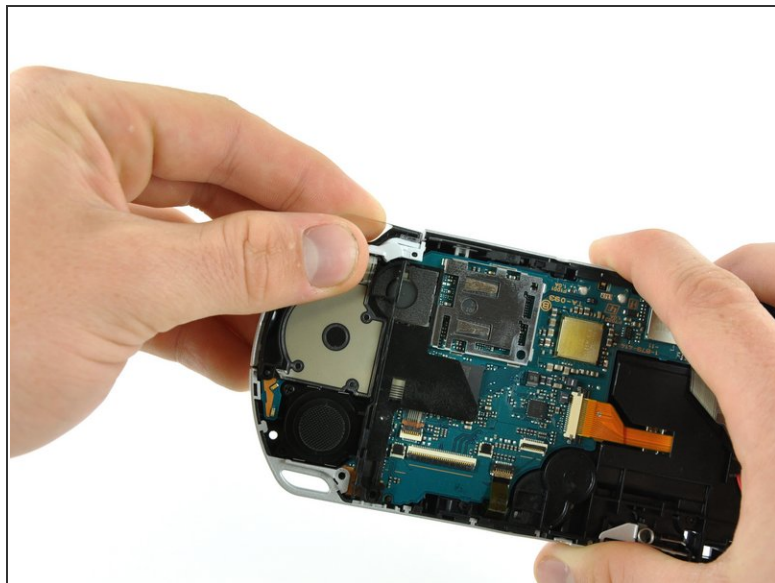
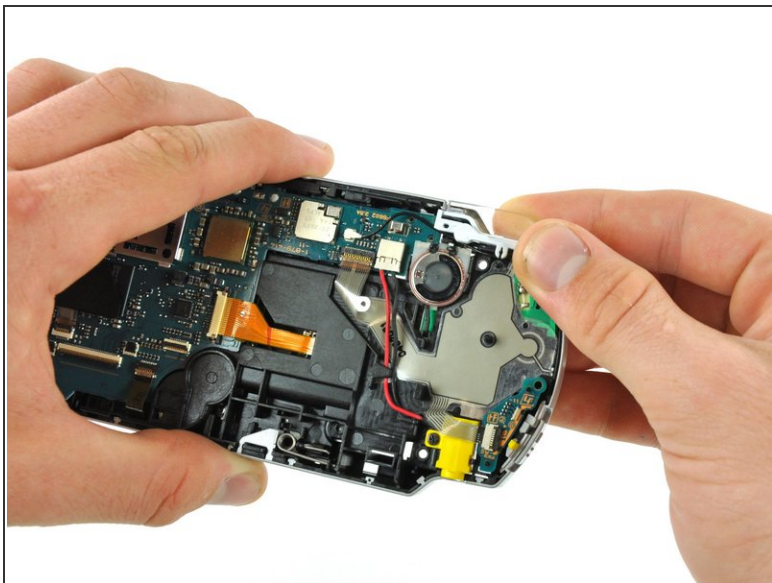


- Lift the home bar up as high as it will go, but not so high that the wires disconnect.

⚠ Try to bend the small tab under the silver rim as little as possible in the following steps. The more you bend, the more likely it will snap.

- Twist the home bar counter clockwise while carefully lifting it further. The left edge has to lift over the black plastic frame to allow it to rotate.
- The home bar should now lift out of the PSP 300xc.

## Step 14 — Trigger Buttons



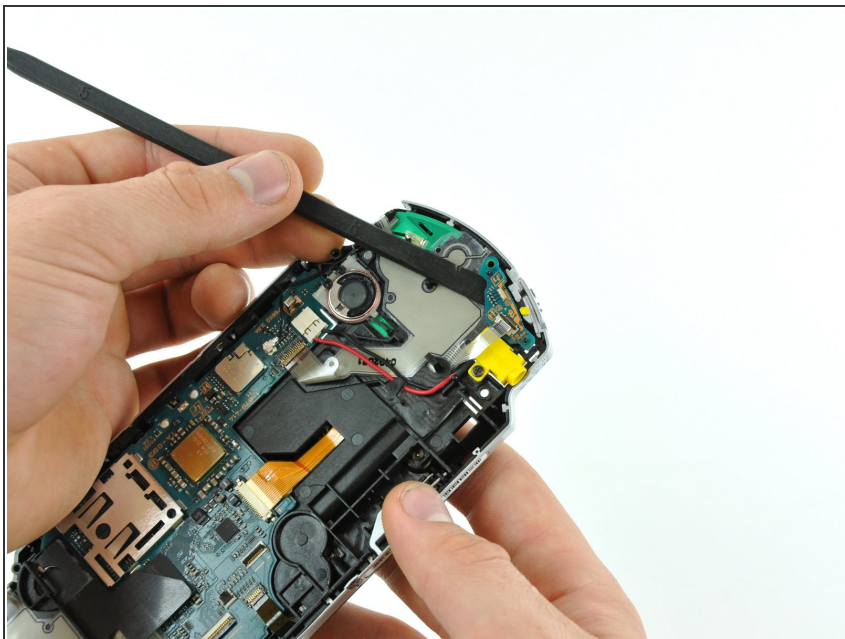
- Remove both trigger buttons by lifting them off the PSP 300xc.

## Step 15 — Power Switch Board



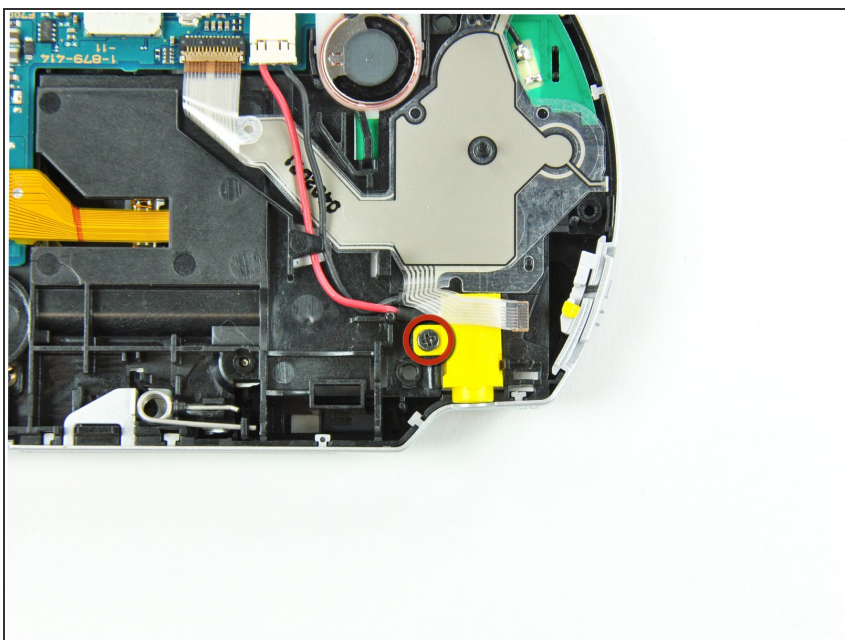
- Using a finger or spudger, flip up the retaining flap on the power switch board ribbon cable socket.
- Pull the ribbon cable out of its socket.

## Step 16



- Using the flat end of a spudger, pry the power switch board up and off the PSP 300xc.
- Remove the power switch board from the PSP.

## Step 17 — Power Jack



- Remove a single Phillips screw securing the power jack to the PSP.

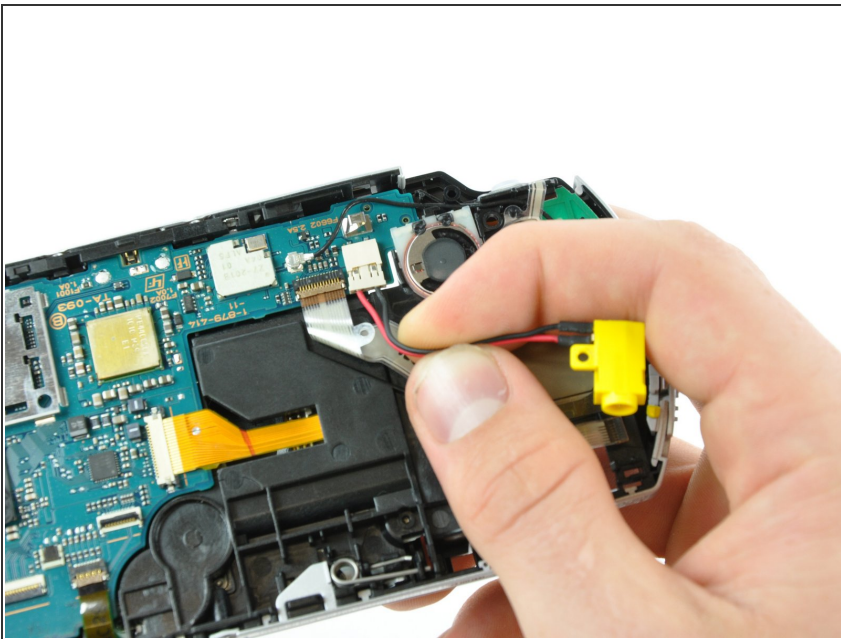


## Step 18



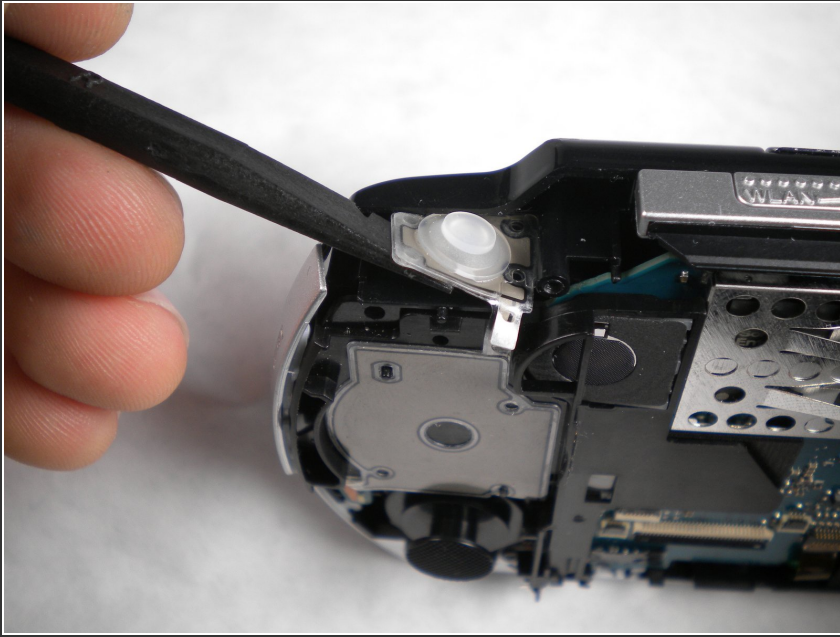
- Using the flat edge of a spudger, pry the small black tab away from the power jack to free it from the case.

## Step 19



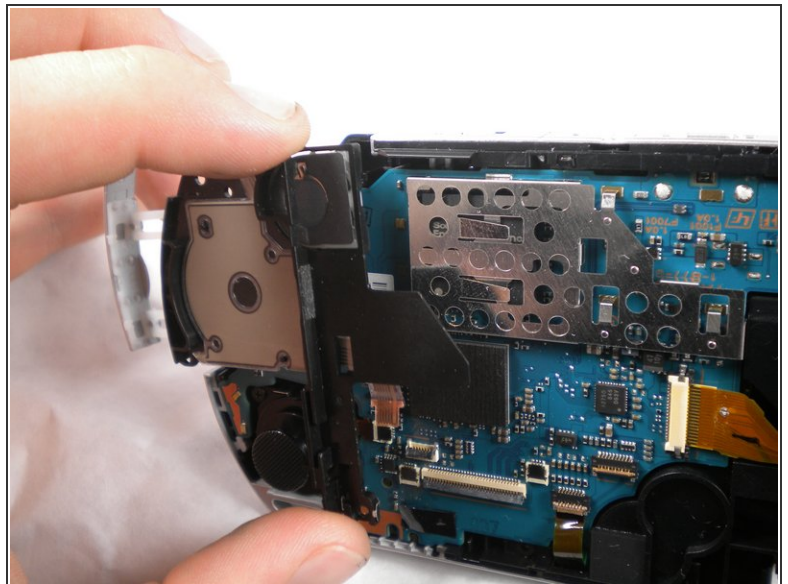
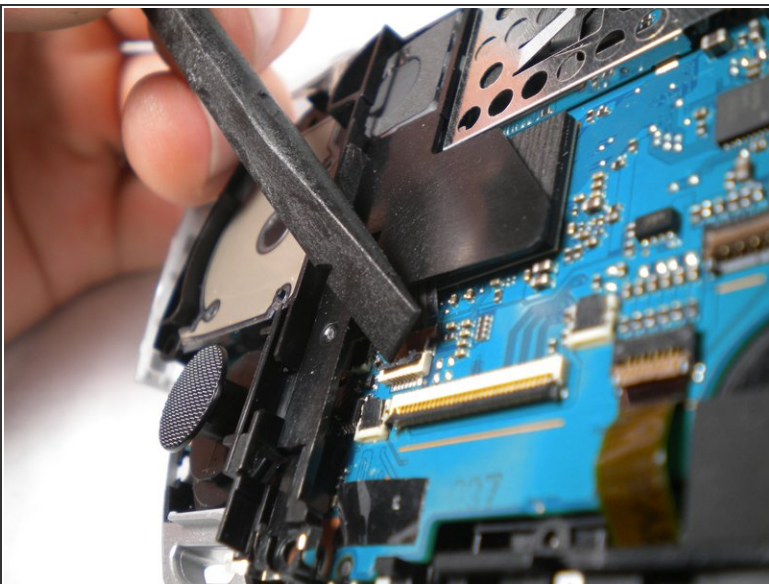
- Disconnect the power jack from its connector on the motherboard by pulling it straight out of its socket.

## Step 20 — Analog Stick



- Using the flat end of a spudger, peel the 'L' trigger contact pad up from the case.

## Step 21



- Using a fingernail or spudger, flip up the retaining flap on the d-pad and 'L' trigger ribbon cable.

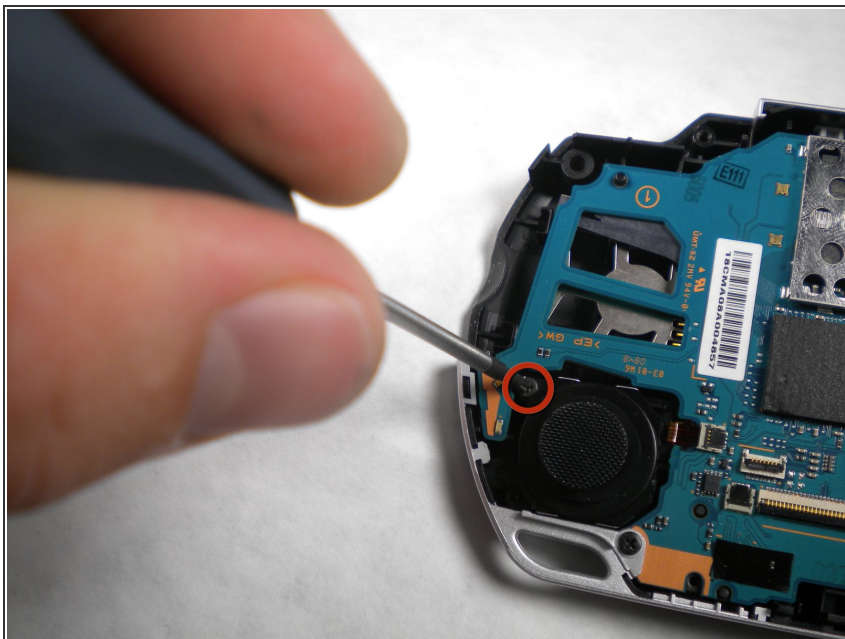
⚠ Be sure you are prying up on the retaining flap, not the socket itself

- Lift the black plastic bracket along with the d-pad contact pad, disconnecting the ribbon cable as you lift.

This document was generated on 2019-09-17 09:02:46 PM (MST).

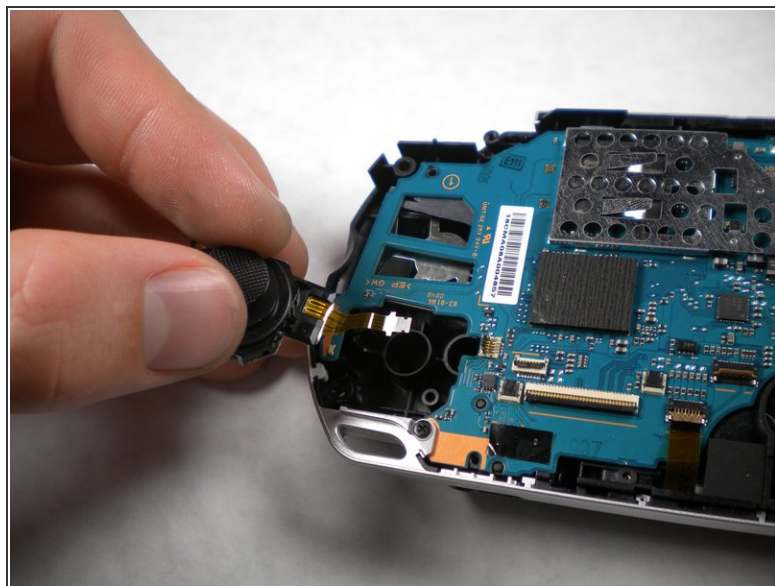
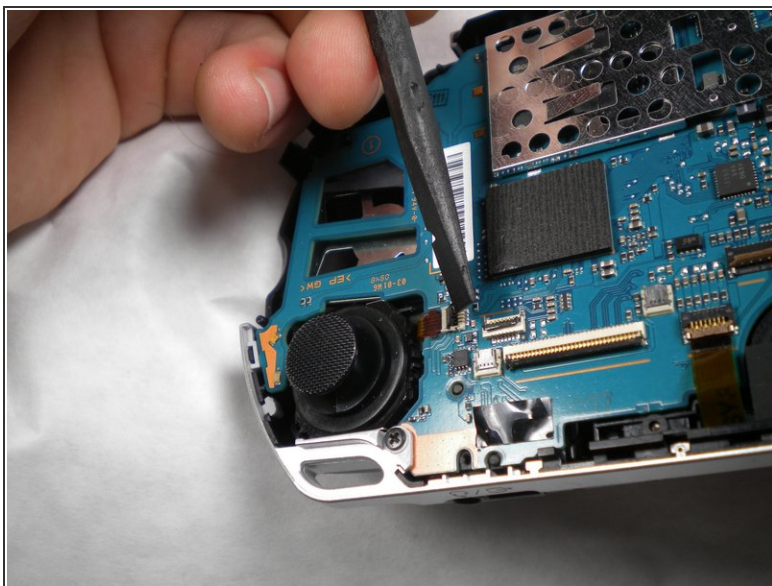


## Step 22



- Remove a single Phillips screw securing the analog stick to the PSP 300xc.

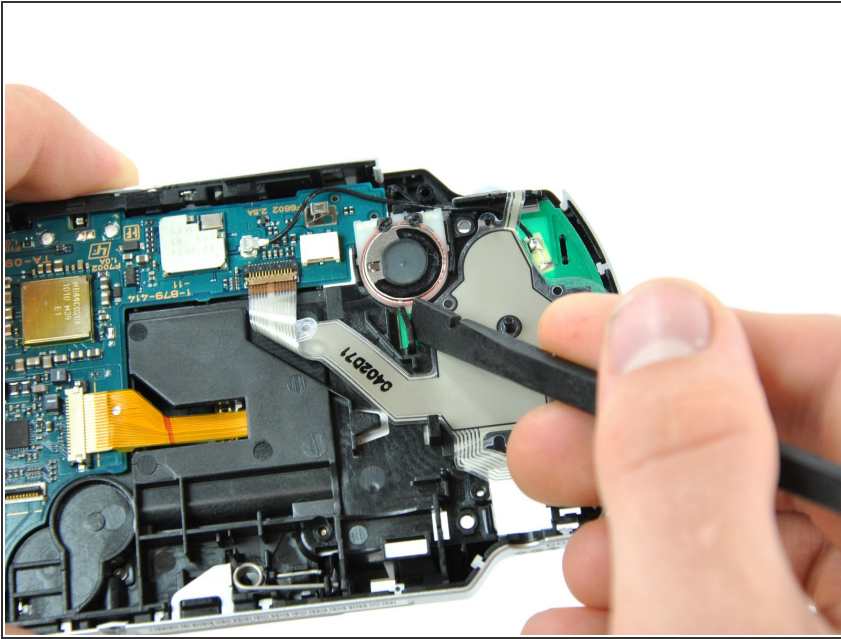
## Step 23



- Use your fingernail or the edge of a plastic opening tool to flip up the retaining flap on the analog stick ribbon connector.
- Lift the analog stick out of the PSP 300xc, disconnecting the ribbon cable as you remove it.

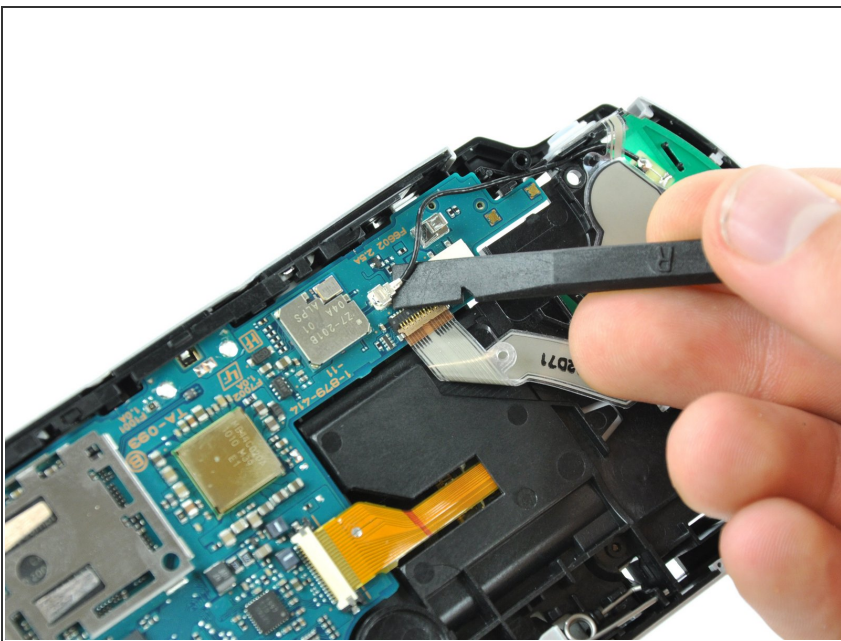


## Step 24 — Motherboard



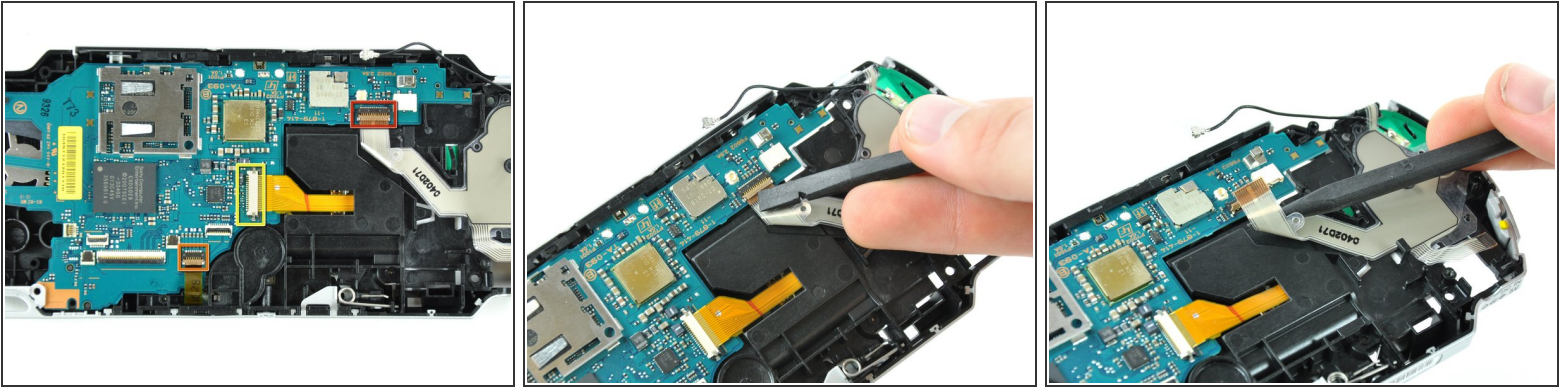
- Push the small black tab holding the right speaker to the left.
- ⓘ The speaker will pop out of place.

## Step 25



- Using the flat edge of a spudger, pry the wireless board cable connector straight up and off the motherboard.

## Step 26



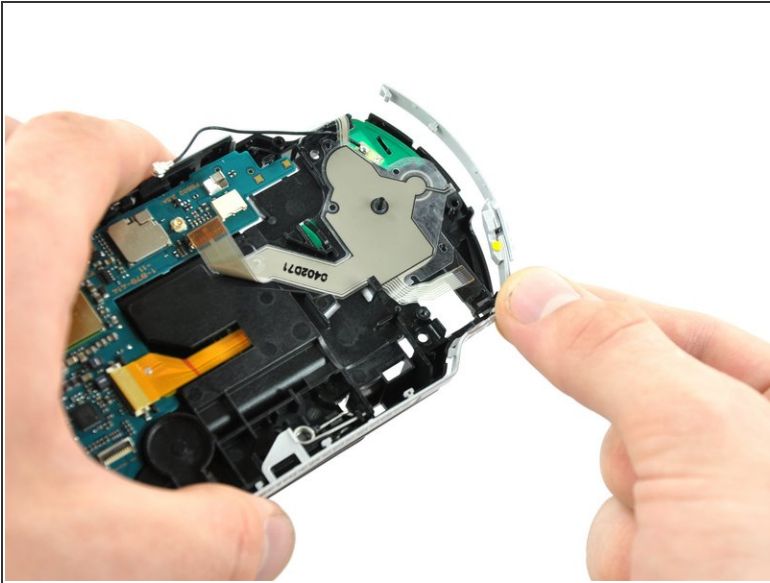
- Using a fingernail or spudger, flip up the retaining flap on the following three ZIF connectors.

- Action button contact pad ribbon
- UMD drive ribbon

⚠ Be sure you are prying up on the retaining flap, not the socket itself.

- Use your fingernail or tip of a spudger to push both sides of the black retaining flap on the UMD laser ribbon socket to the right.
- Use your fingers or a spudger to gently pull all three ribbon cables straight out of their sockets.

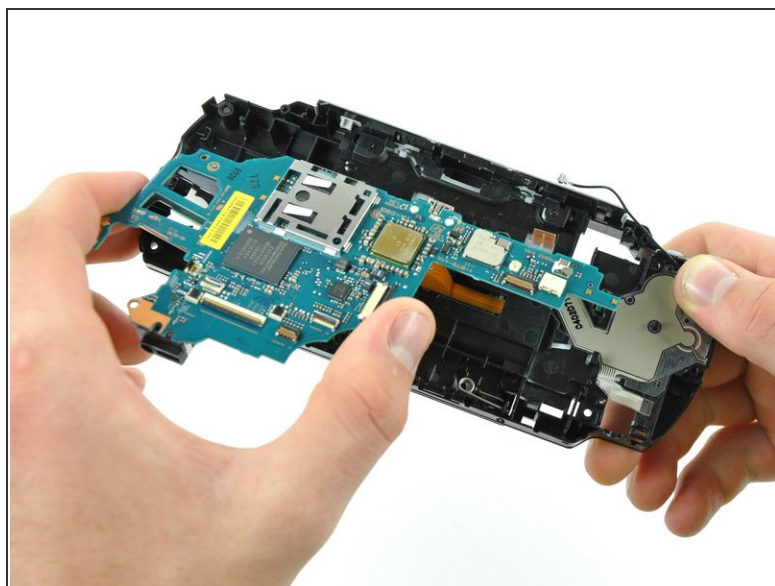
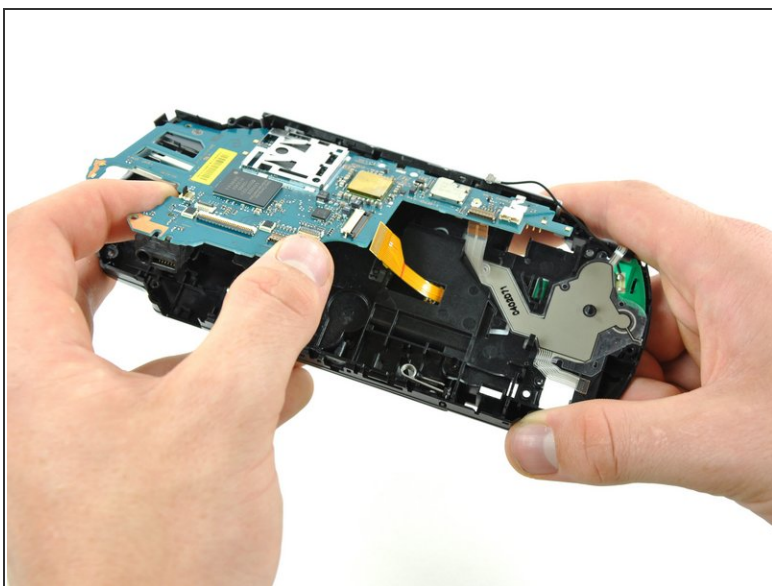
## Step 27



- Lift the right silver rim up and off the PSP 300xc
- Lift the left silver rim up and off the PSP 300xc



## Step 28



- Lift the motherboard up from its bottom edge about 45 degrees from the case.
  - Slowly attempt to pull the motherboard out at roughly a 45 degree angle from the case.
- i** It takes a little fidgeting to get the motherboard to come apart from the case.

To reassemble your device, follow these instructions in reverse order.