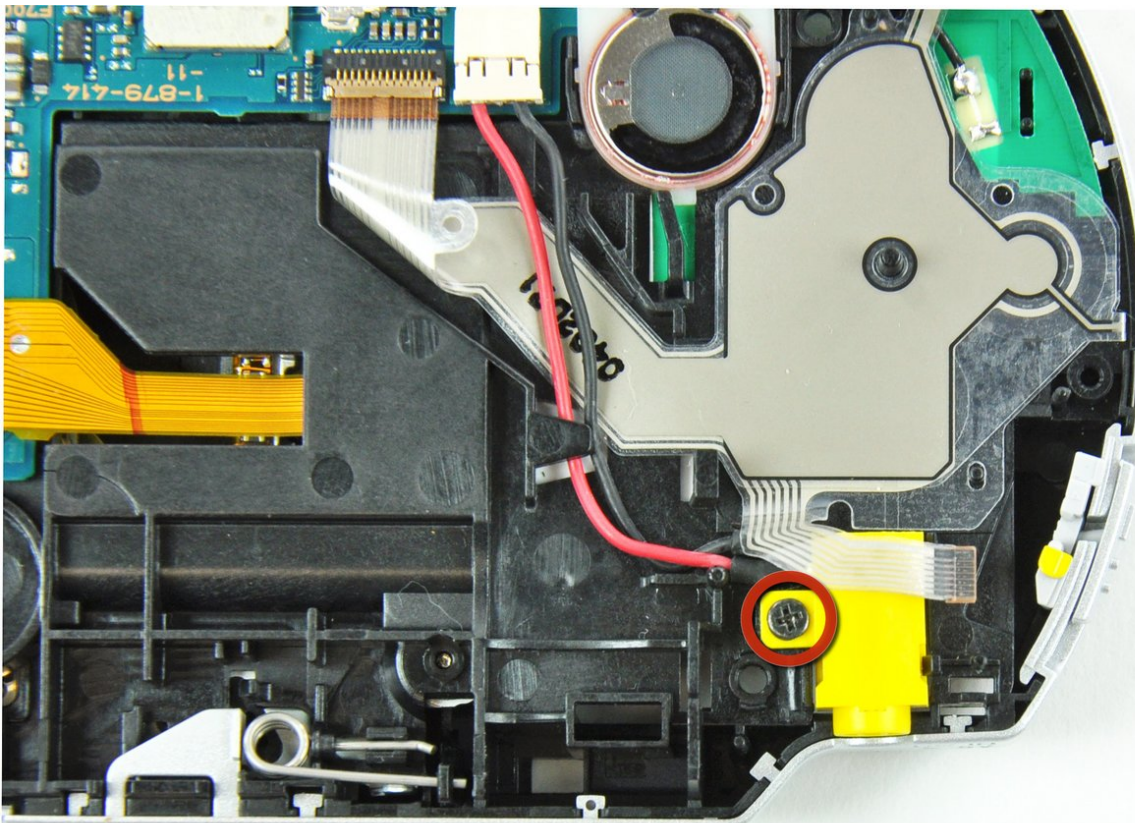




PSP 300xc Power Jack Replacement

Replacing the power jack for your PSP 300xc.

Written By: Matthew Newsom



INTRODUCTION

Does your PSP 300xc fail to charge? Get jacked in and get back into the game with a new power jack.



TOOLS:

- [Phillips #00 Screwdriver](#) (1)
- [Spudger](#) (1)



PARTS:

- [Sony PSP 3000 DC-In Power Jack](#) (1)

Step 1 — Battery



- Press the button securing the battery door to the PSP 300xc, and lift the battery door off.
- Lift the battery out of the PSP.

Step 2 — Front Case



- Use a spudger or your fingernail to remove the warranty sticker stuck to the inside of the battery tray

Step 3



- Remove four Phillips screws from the back of the PSP.

Step 4



- Remove two Phillips screws from the top of the PSP.

Step 5



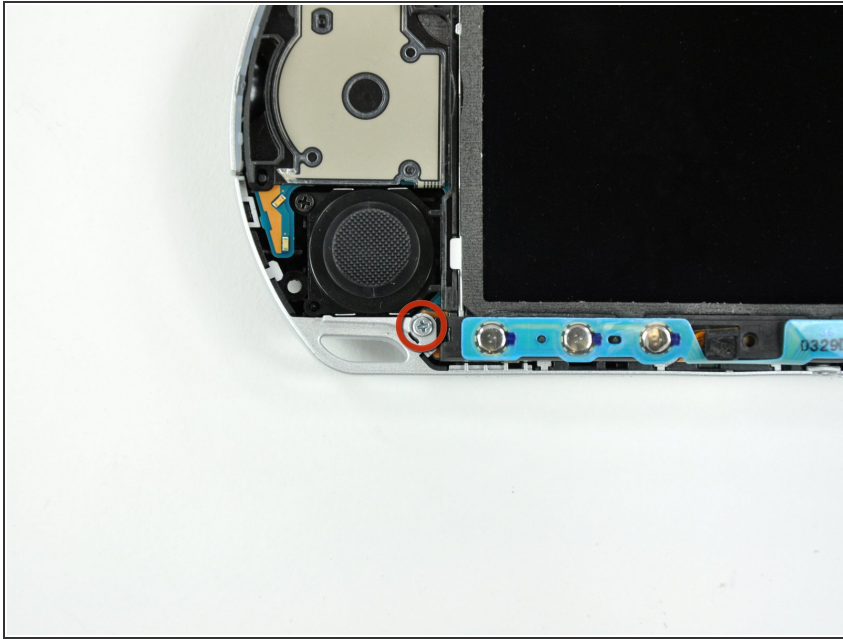
- Remove a single screw from the bottom edge of the PSP.

Step 6



- Insert a spudger between the front case and PSP, and slide the spudger along the perimeter of the front case to remove it.

Step 7 — LCD



- Remove a single Phillips screw securing the home bar to the PSP 300xc.

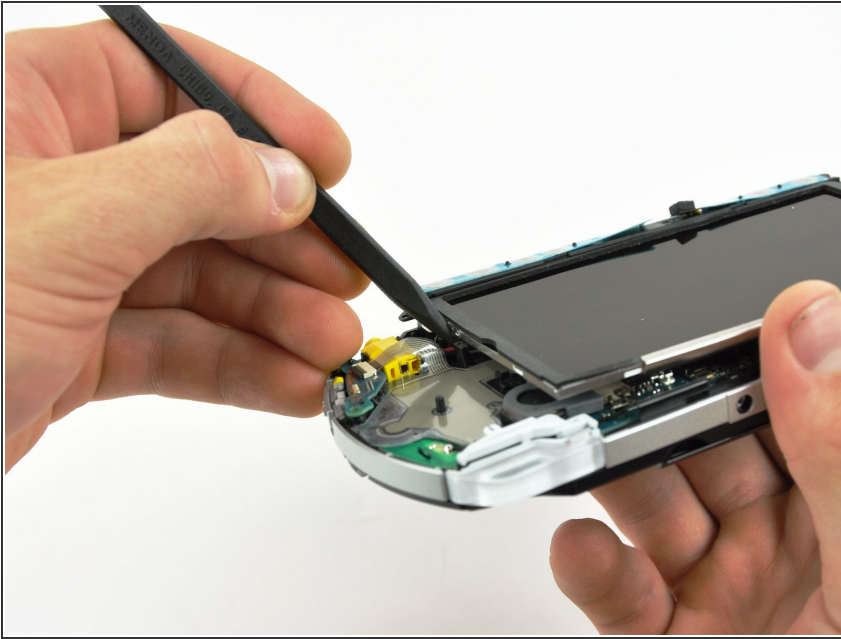
Step 8



- Push the home bar to the right about 1cm to release a tab, and begin to lift the right end of the home bar slightly.

⚠ Do not attempt to remove the home bar yet, it is still attached to the PSP 300xc.

Step 9



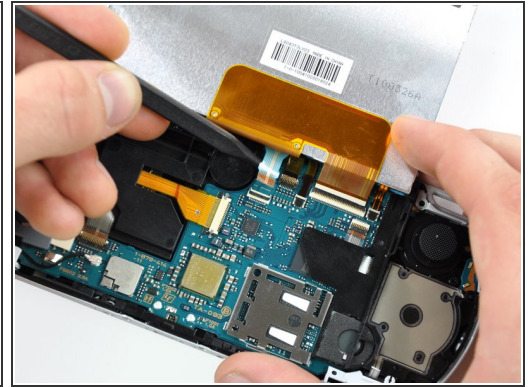
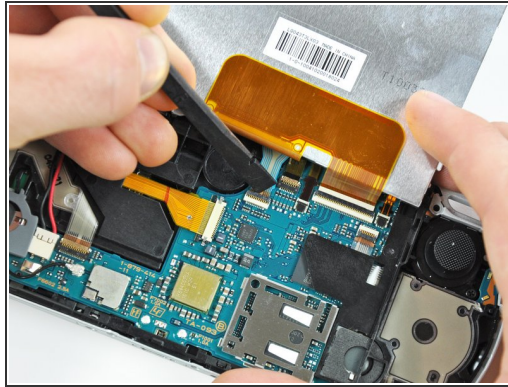
- Insert a spudger under the LCD, beside the black plastic tab.
- Push the LCD to the left and pry up to release the left edge of the LCD from under the plastic tab.

Step 10



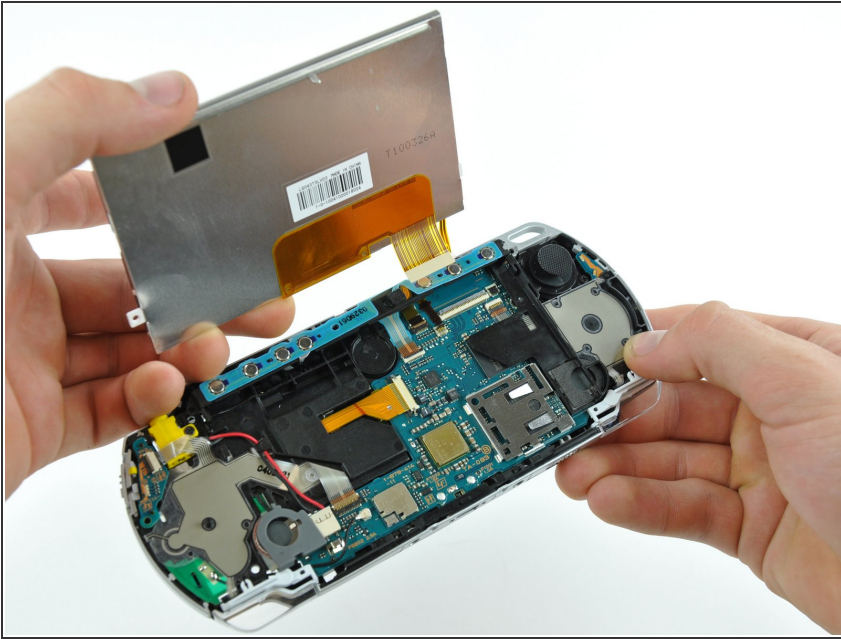
- Insert a spudger under the LCD, beside the black plastic tab.
- Push the LCD to the right and pry up to release the right edge of the LCD from under the plastic tab.

Step 11



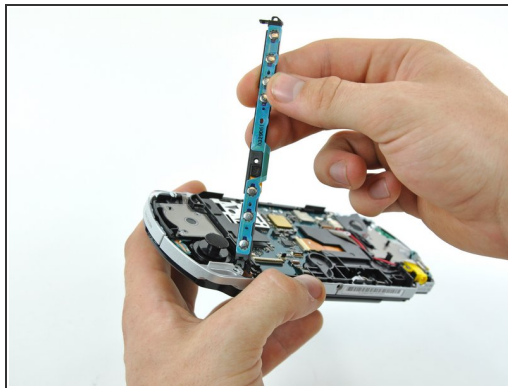
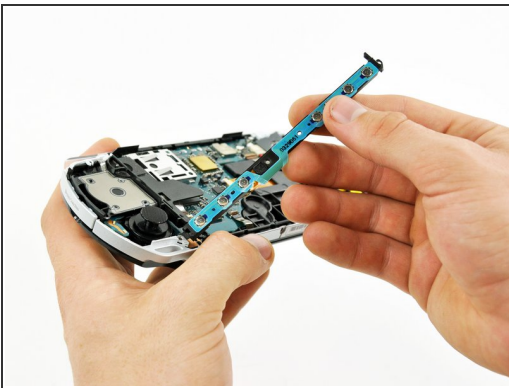
- Rotate the LCD away from the PSP to reveal the LCD and home bar ribbon cables.
 - Use your fingernail or the edge of a plastic opening tool to flip up the retaining flap on the following four ZIF connectors:
 - Home bar cable
 - Microphone cable
 - LCD display data cable
 - Touchscreen cable
- ⚠ Be sure you are prying up on the retaining flap, not the socket itself
- After flipping up the locking tabs on all four connectors, use your fingers or a spudger to gently pull the cables straight out of the connectors.

Step 12



- Remove the LCD from the PSP 300xc.

Step 13 — Home Bar

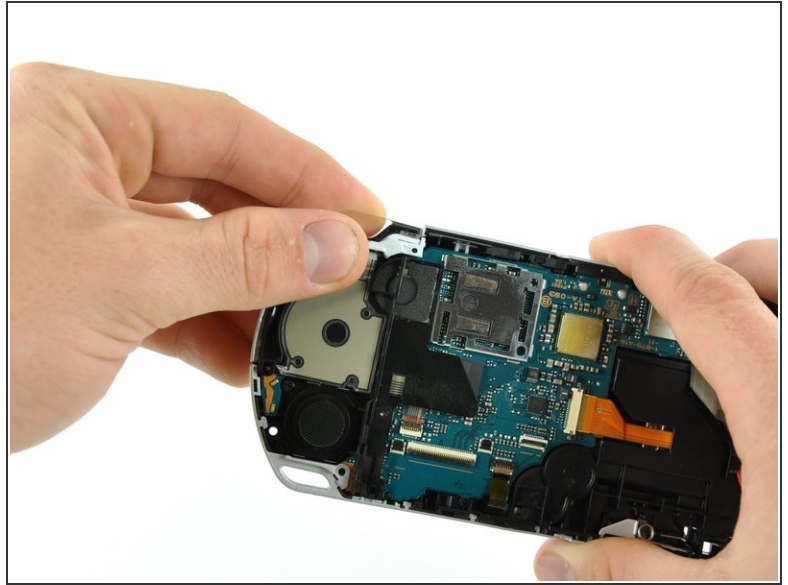
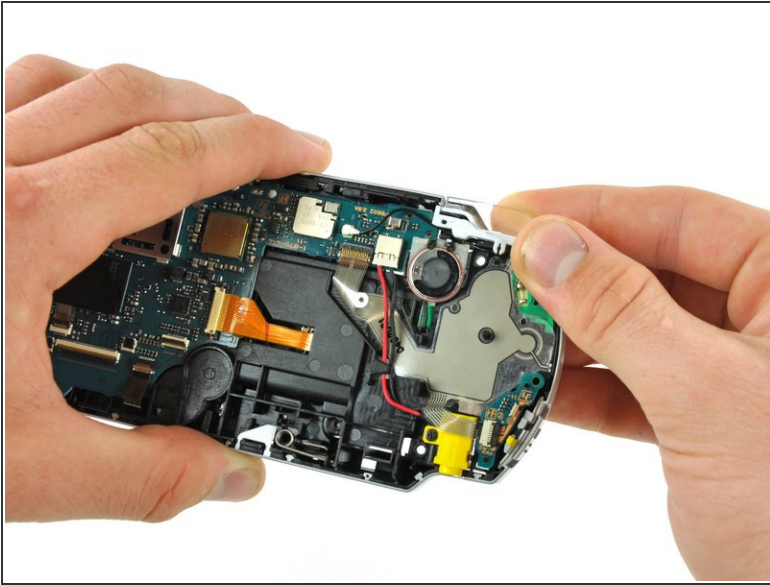


- Lift the home bar up as high as it will go, but not so high that the wires disconnect.

⚠ Try to bend the small tab under the silver rim as little as possible in the following steps. The more you bend, the more likely it will snap.

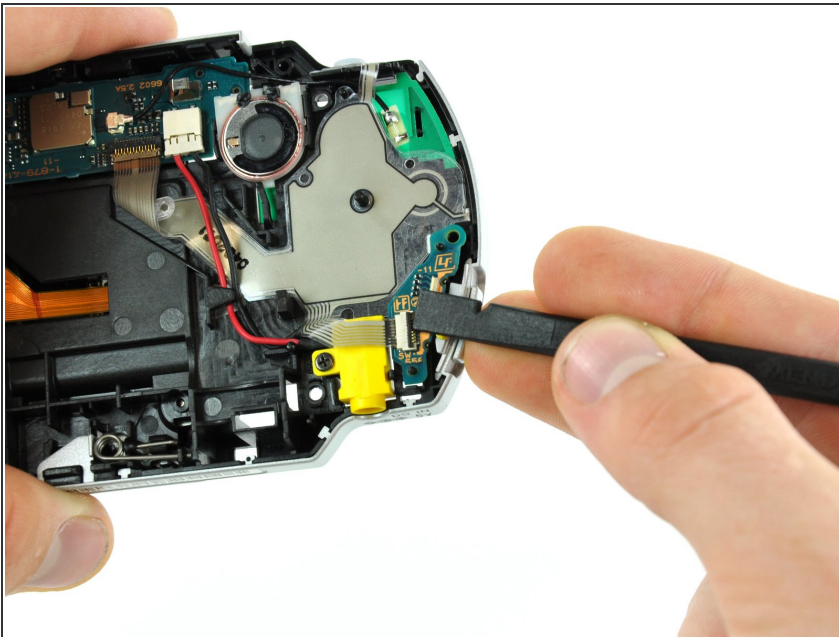
- Twist the home bar counter clockwise while carefully lifting it further. The left edge has to lift over the black plastic frame to allow it to rotate.
- The home bar should now lift out of the PSP 300xc.

Step 14 — Trigger Buttons



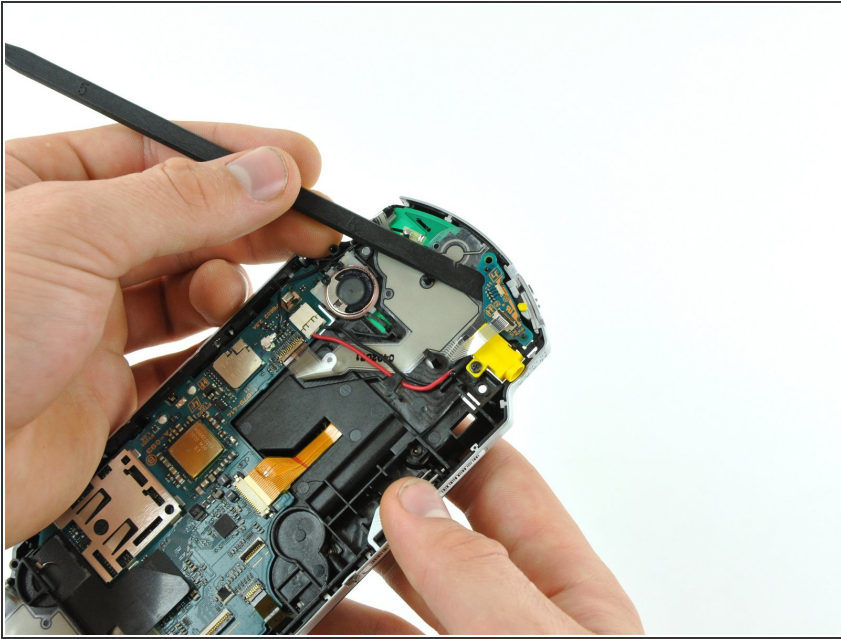
- Remove both trigger buttons by lifting them off the PSP 300xc.

Step 15 — Power Switch Board



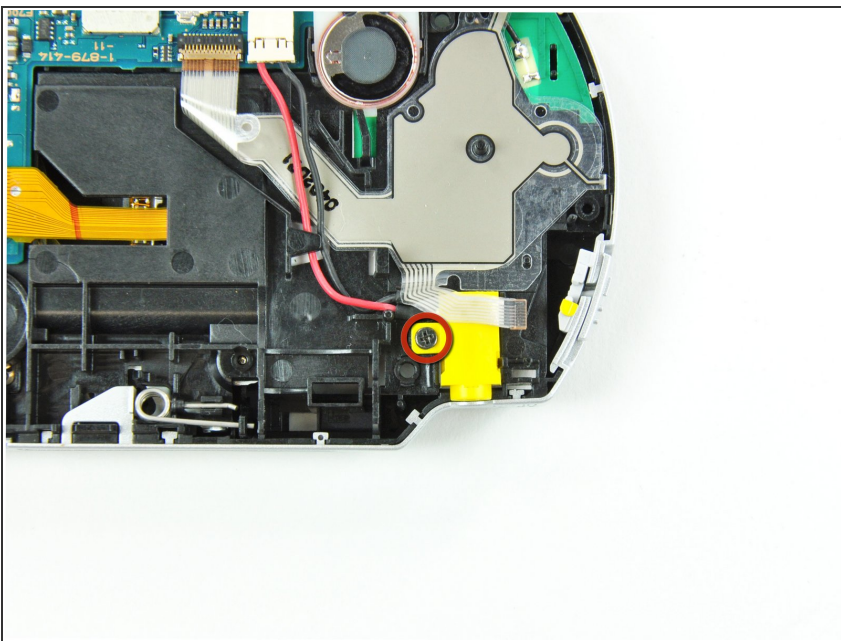
- Using a finger or spudger, flip up the retaining flap on the power switch board ribbon cable socket.
- Pull the ribbon cable out of its socket.

Step 16



- Using the flat end of a spudger, pry the power switch board up and off the PSP 300xc.
- Remove the power switch board from the PSP.

Step 17 — Power Jack



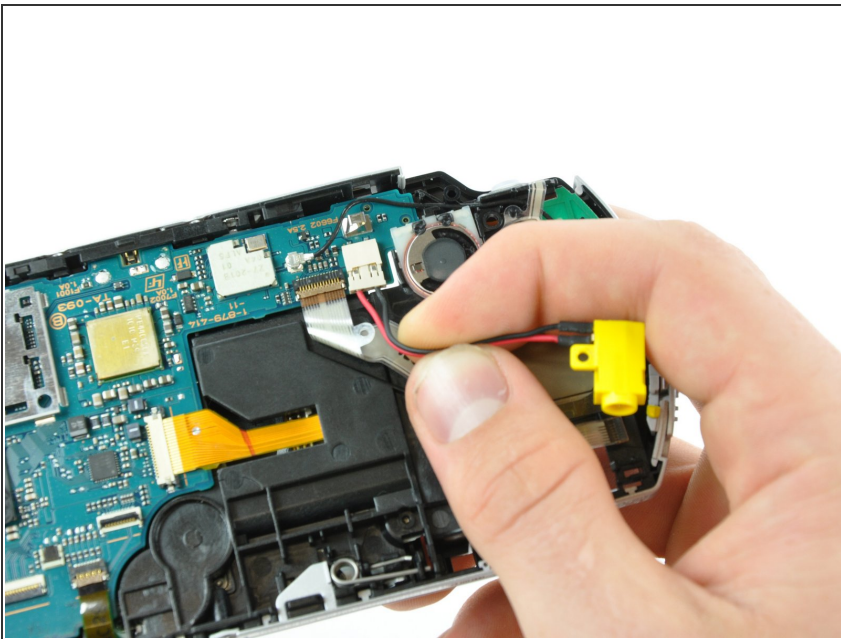
- Remove a single Phillips screw securing the power jack to the PSP.

Step 18



- Using the flat edge of a spudger, pry the small black tab away from the power jack to free it from the case.

Step 19



- Disconnect the power jack from its connector on the motherboard by pulling it straight out of its socket.

To reassemble your device, follow these instructions in reverse order.