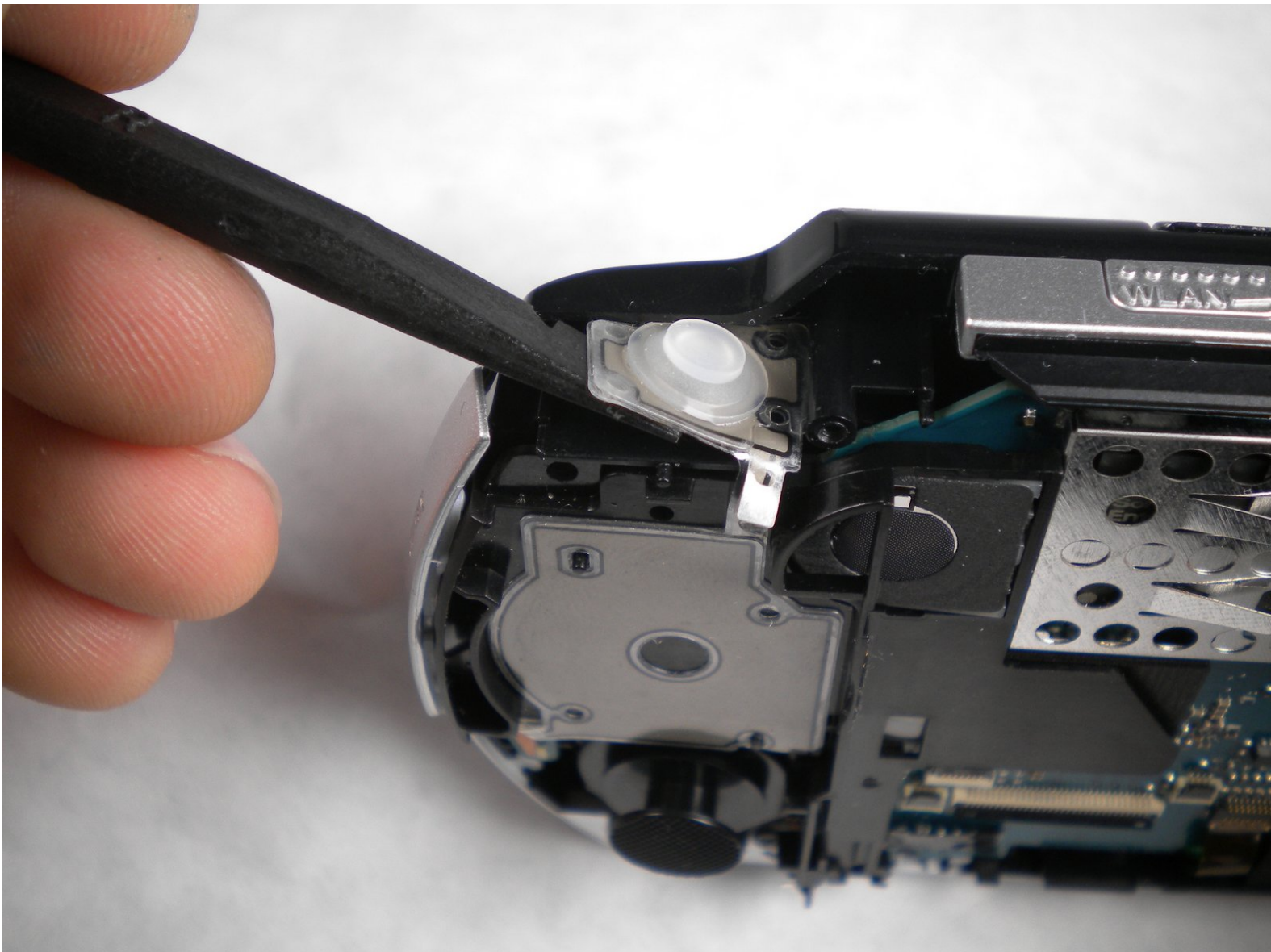




# PSP 300xc Speakers Replacement

Replacing both speakers in the PSP 300xc.

Written By: Matthew Newsom



# INTRODUCTION

Has your PSP 300xc stopped making beautiful music? Replace the speakers to make it sing again.



## TOOLS:

- [Phillips #00 Screwdriver](#) (1)
- [Spudger](#) (1)



## PARTS:

- [Sony PSP 300xc Speaker Set](#) (1)

## Step 1 — Battery



- Press the button securing the battery door to the PSP 300xc, and lift the battery door off.
- Lift the battery out of the PSP.

## Step 2 — Front Case



- Use a spudger or your fingernail to remove the warranty sticker stuck to the inside of the battery tray



## Step 3



- Remove four Phillips screws from the back of the PSP.

## Step 4



- Remove two Phillips screws from the top of the PSP.

## Step 5



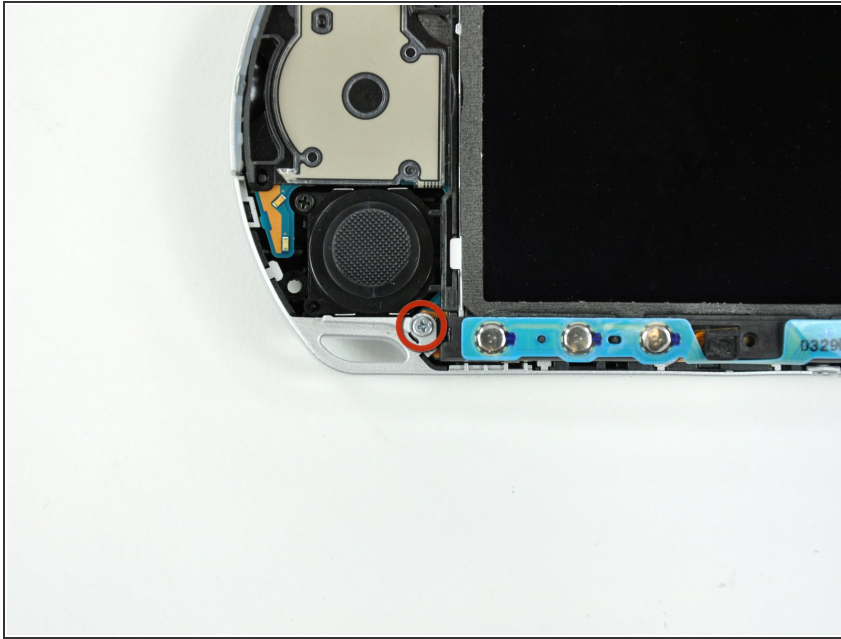
- Remove a single screw from the bottom edge of the PSP.

## Step 6



- Insert a spudger between the front case and PSP, and slide the spudger along the perimeter of the front case to remove it.

## Step 7 — LCD



- Remove a single Phillips screw securing the home bar to the PSP 300xc.

## Step 8

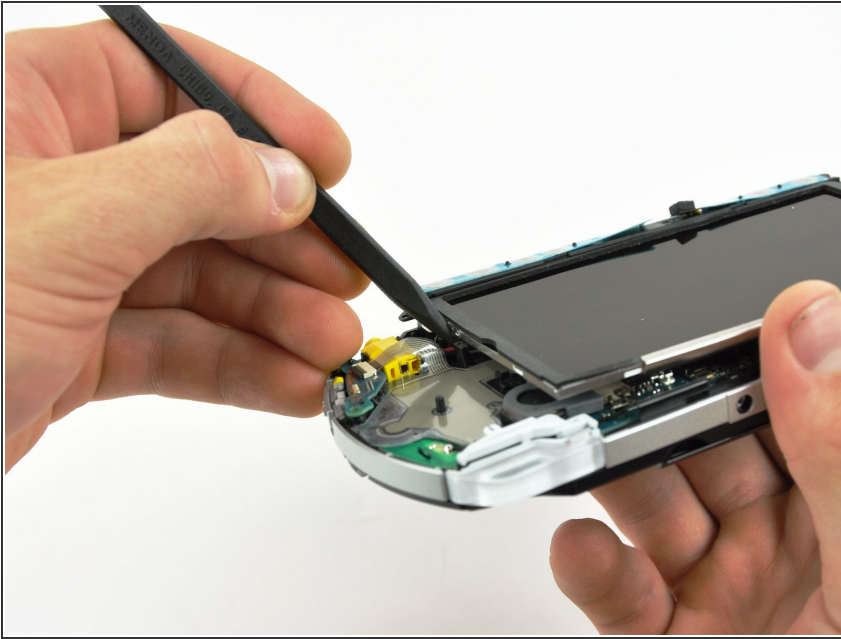


- Push the home bar to the right about 1cm to release a tab, and begin to lift the right end of the home bar slightly.

 Do not attempt to remove the home bar yet, it is still attached to the PSP 300xc.



## Step 9



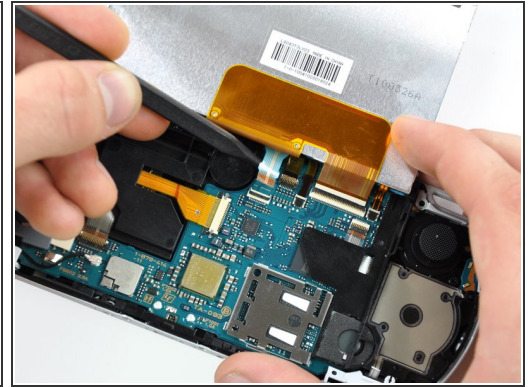
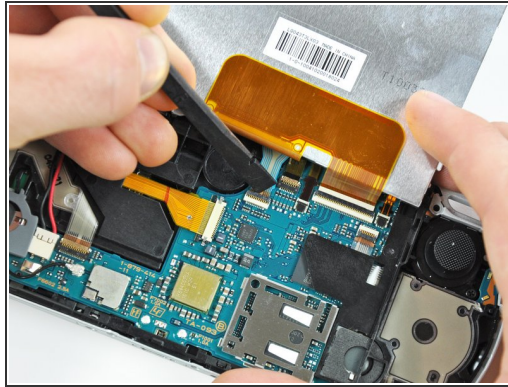
- Insert a spudger under the LCD, beside the black plastic tab.
- Push the LCD to the left and pry up to release the left edge of the LCD from under the plastic tab.

## Step 10



- Insert a spudger under the LCD, beside the black plastic tab.
- Push the LCD to the right and pry up to release the right edge of the LCD from under the plastic tab.

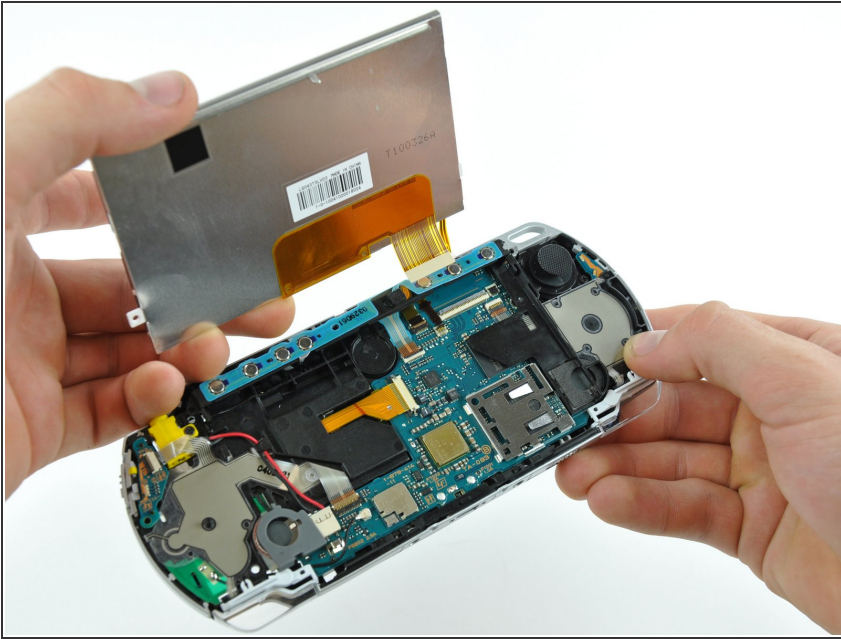
## Step 11



- Rotate the LCD away from the PSP to reveal the LCD and home bar ribbon cables.
  - Use your fingernail or the edge of a plastic opening tool to flip up the retaining flap on the following four ZIF connectors:
    - Home bar cable
    - Microphone cable
    - LCD display data cable
    - Touchscreen cable
- ⚠ Be sure you are prying up on the retaining flap, not the socket itself
- After flipping up the locking tabs on all four connectors, use your fingers or a spudger to gently pull the cables straight out of the connectors.

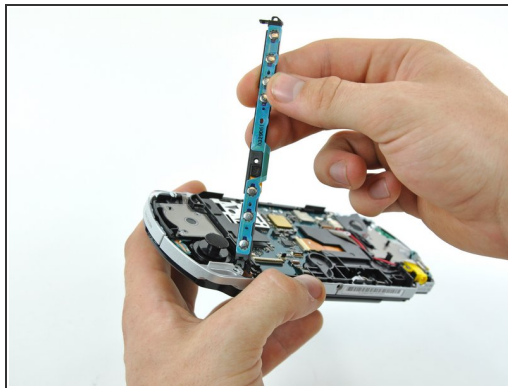
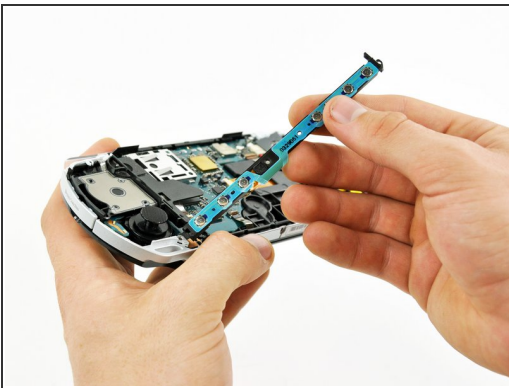


## Step 12



- Remove the LCD from the PSP 300xc.

## Step 13 — Home Bar

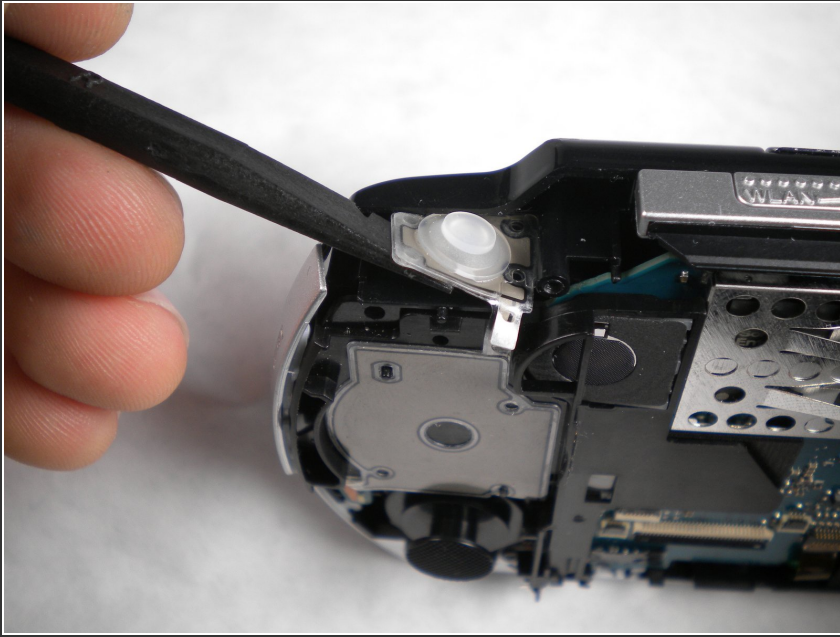


- Lift the home bar up as high as it will go, but not so high that the wires disconnect.

⚠ Try to bend the small tab under the silver rim as little as possible in the following steps. The more you bend, the more likely it will snap.

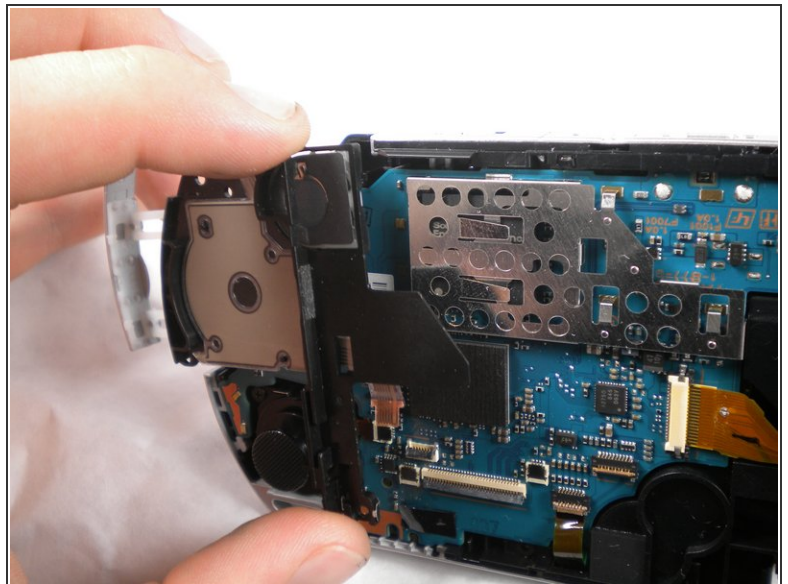
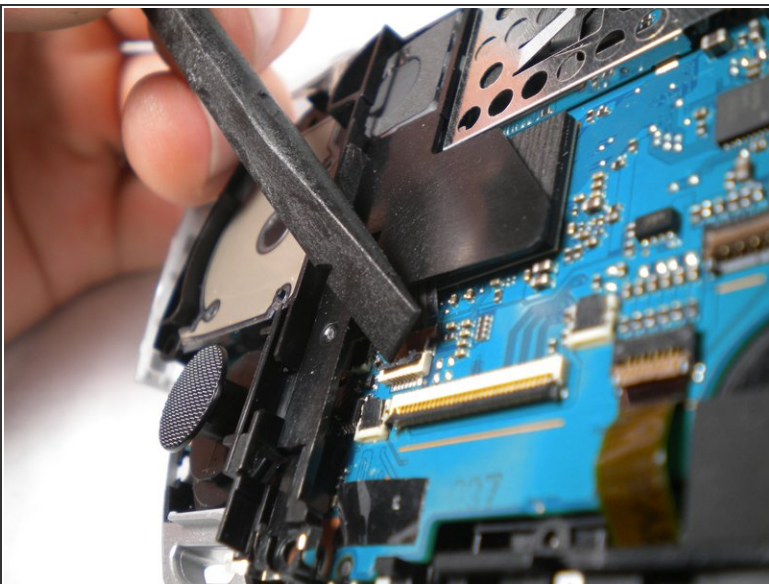
- Twist the home bar counter clockwise while carefully lifting it further. The left edge has to lift over the black plastic frame to allow it to rotate.
- The home bar should now lift out of the PSP 300xc.

## Step 14 — Speakers



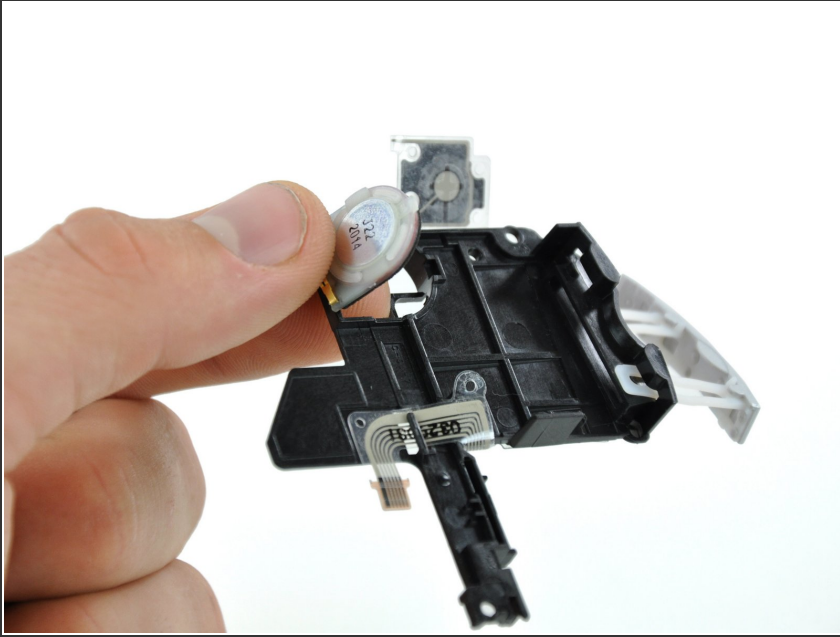
- Using the flat end of a spudger, peel the left trigger contact pad up from the case.

## Step 15



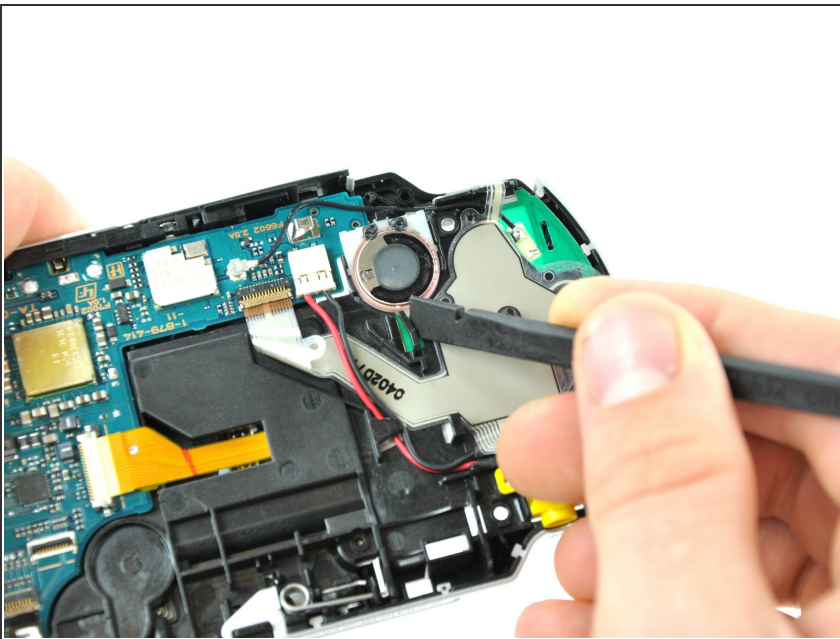
- Using a fingernail or spudger, flip up the retaining bracket on the d-pad and 'L' trigger ribbon cable.
- Lift the black plastic bracket along with the d-pad contact pad, disconnecting the ribbon cable as you lift.

## Step 16



- Pop the left speaker out from the bottom of the black plastic bracket.
- Set the left speaker aside.

## Step 17



- Push the black tab holding the right speaker down to the left.
- ⓘ The speaker will pop out of place after pushing the tab.
- Remove the speaker.

To reassemble your device, follow these instructions in reverse order.