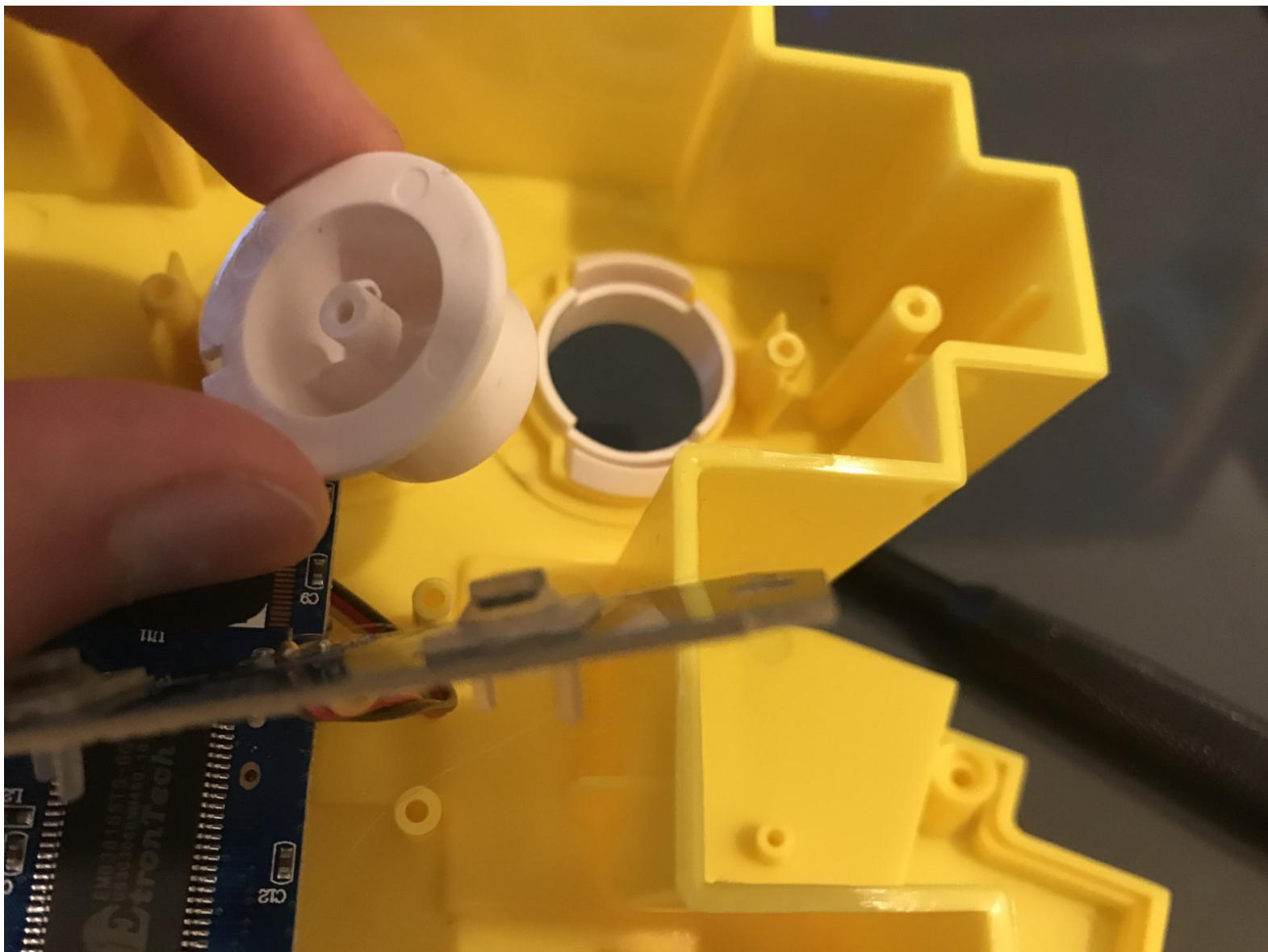




Pac-Man Connect and Play A or B Button Replacement

A replacement of the A or B button

Written By: Levi G

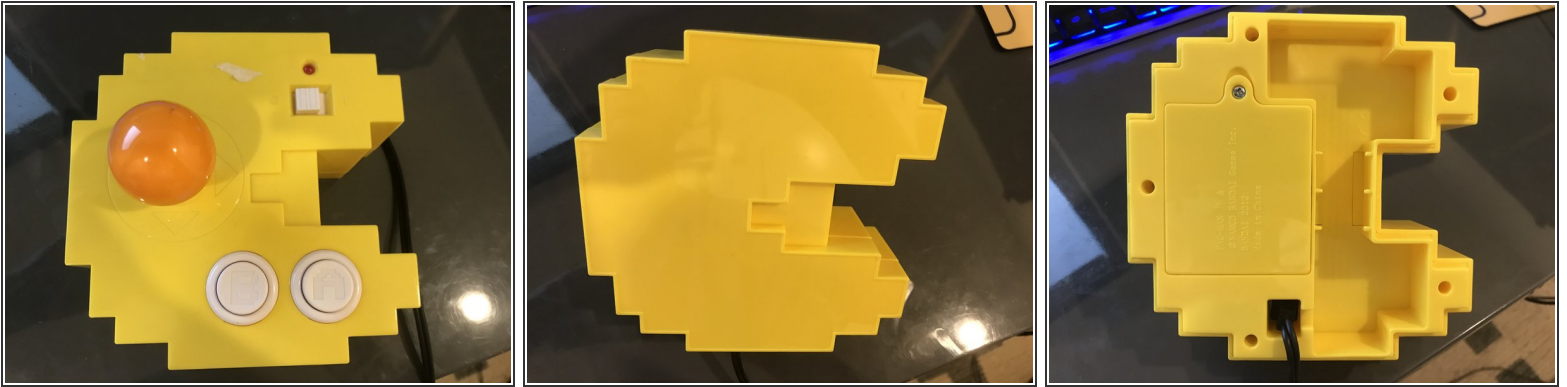




TOOLS:

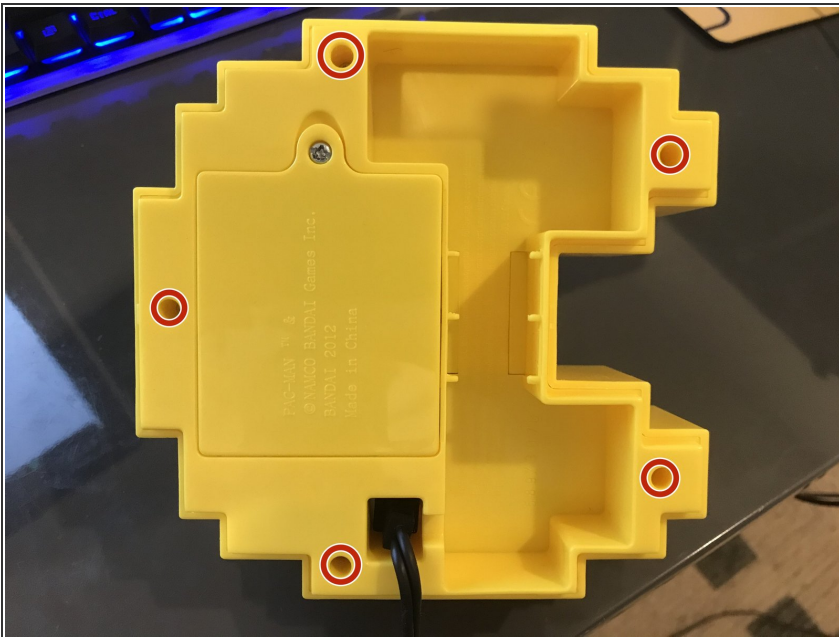
- [Philips Head Screwdriver: Size J1](#) (1)
-

Step 1 — A or B Button



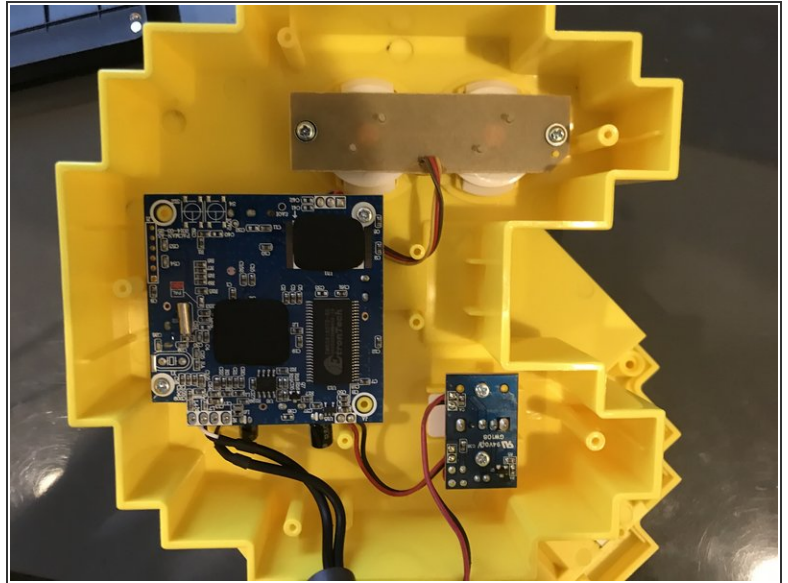
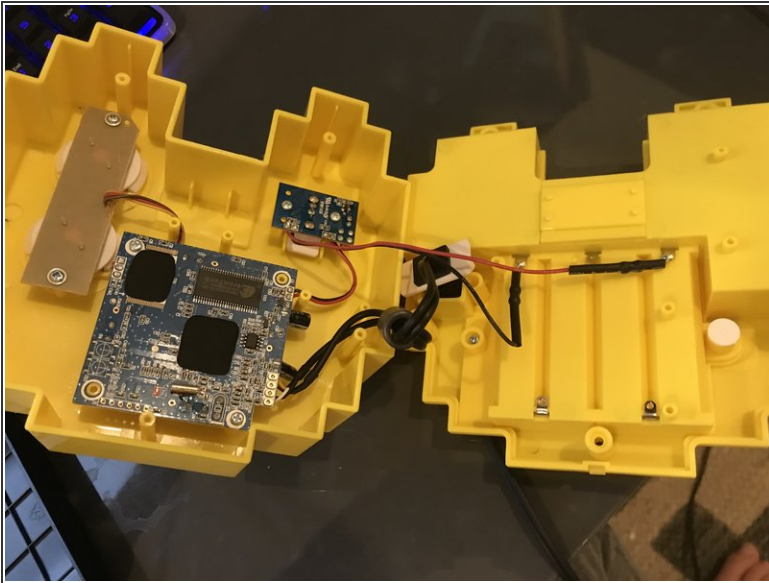
- Begin by flipping the device over and removing the back cover
- Ensure the device has no power, and isn't plugged into a television set.

Step 2



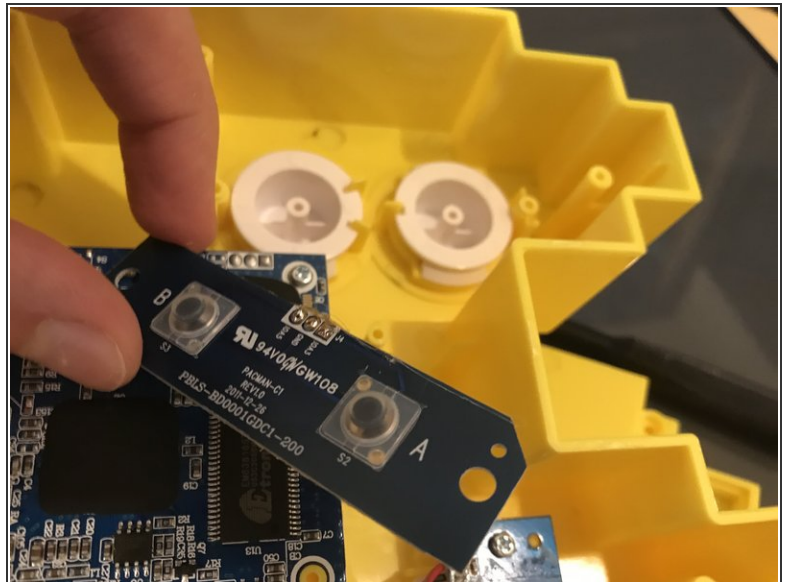
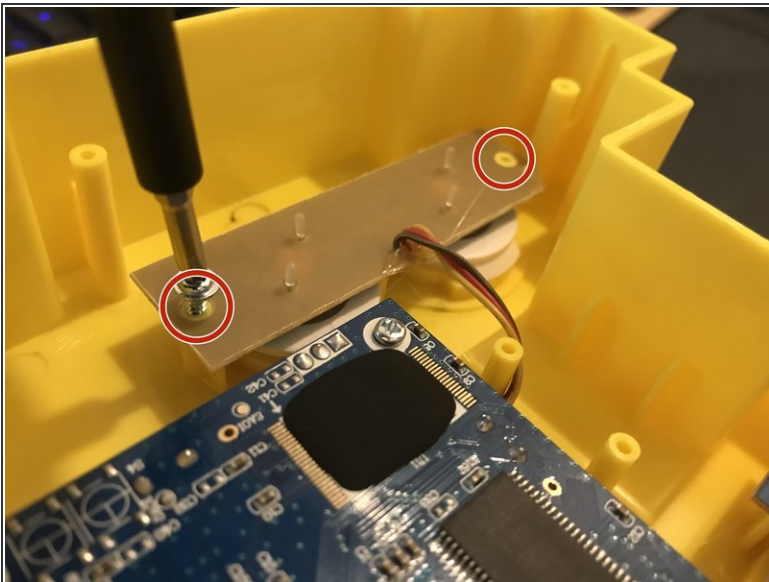
- Remove the 5 Phillips head screws

Step 3



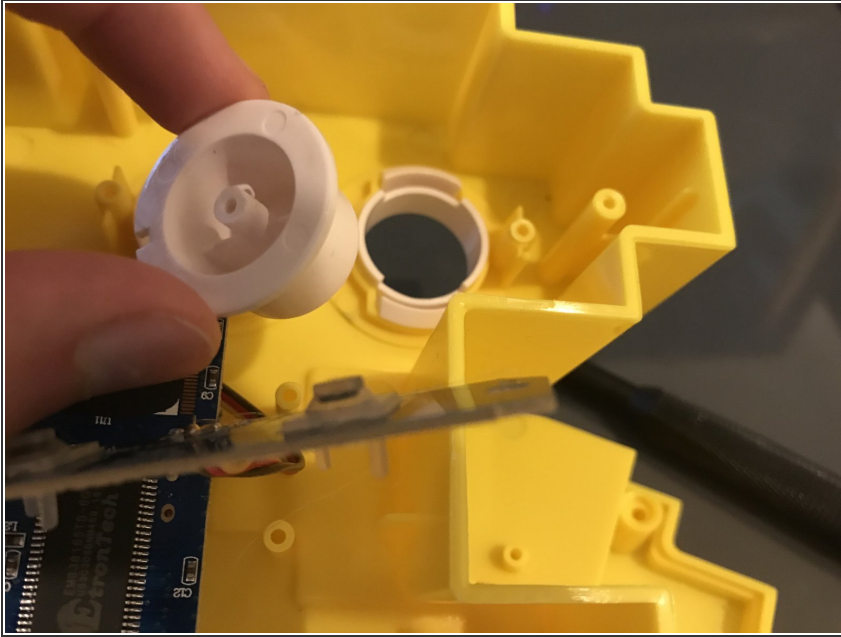
- You can now open the device.

Step 4



- Remove these 2 Phillips Head screws
- Pull back the button board

Step 5



- You can now remove either (or both) buttons

To reassemble your device, follow these instructions in reverse order.