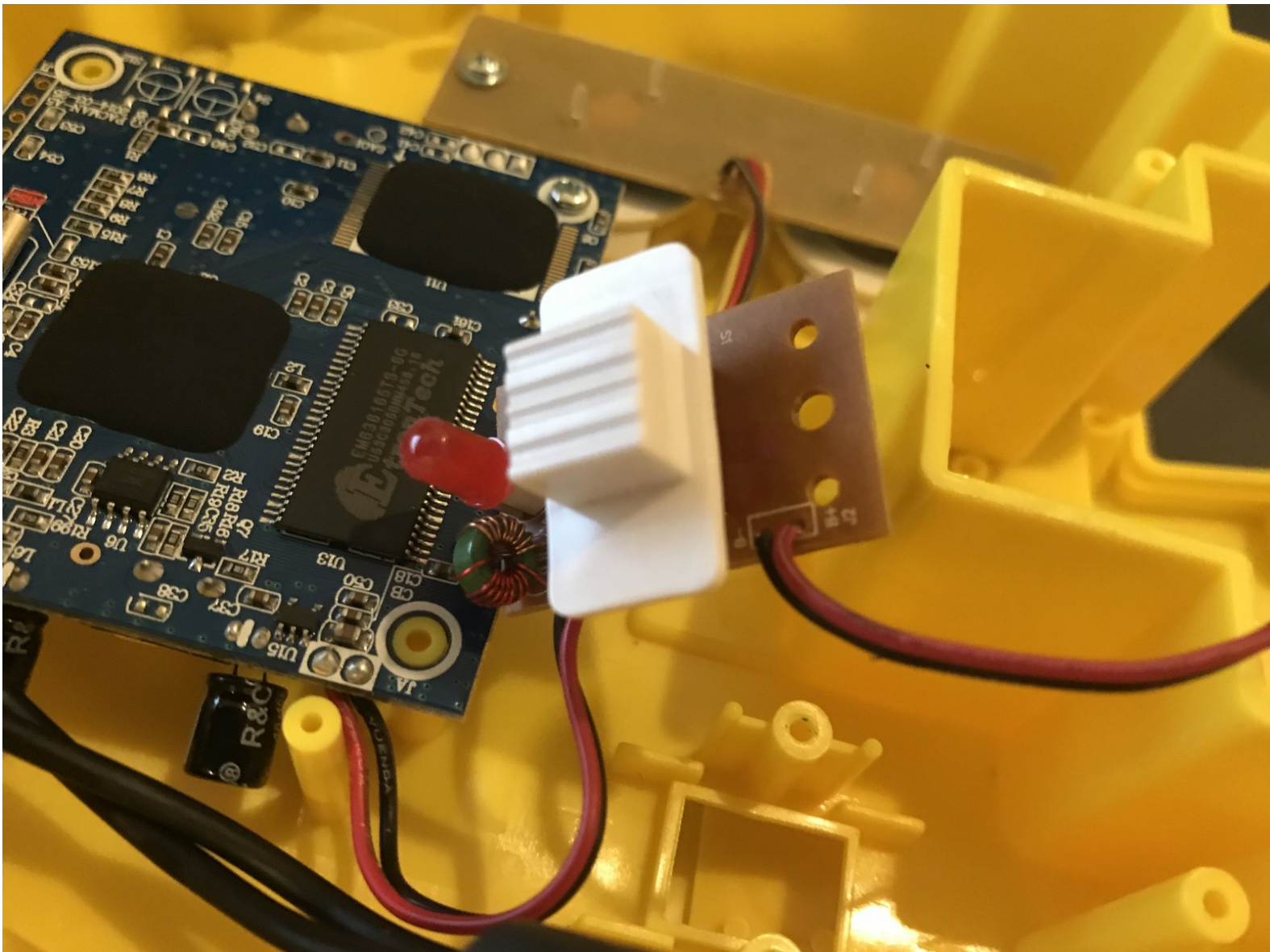




Pac-Man Connect and Play Power Switch Replacement

Written By: Levi G

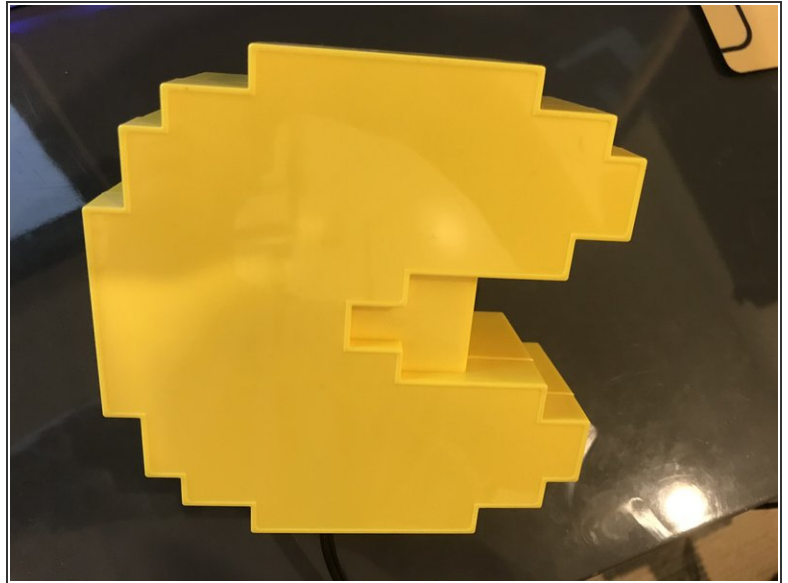
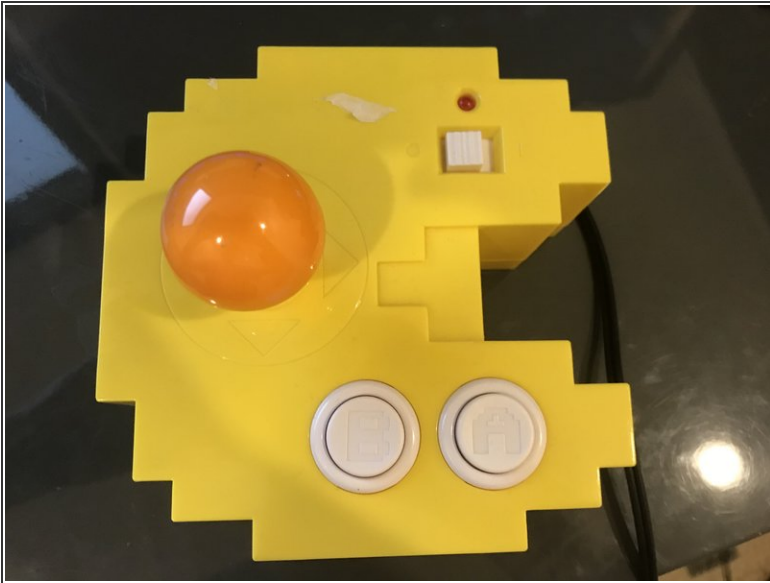




TOOLS:

- [Philips Head Screwdriver: Size J1](#) (1)
-

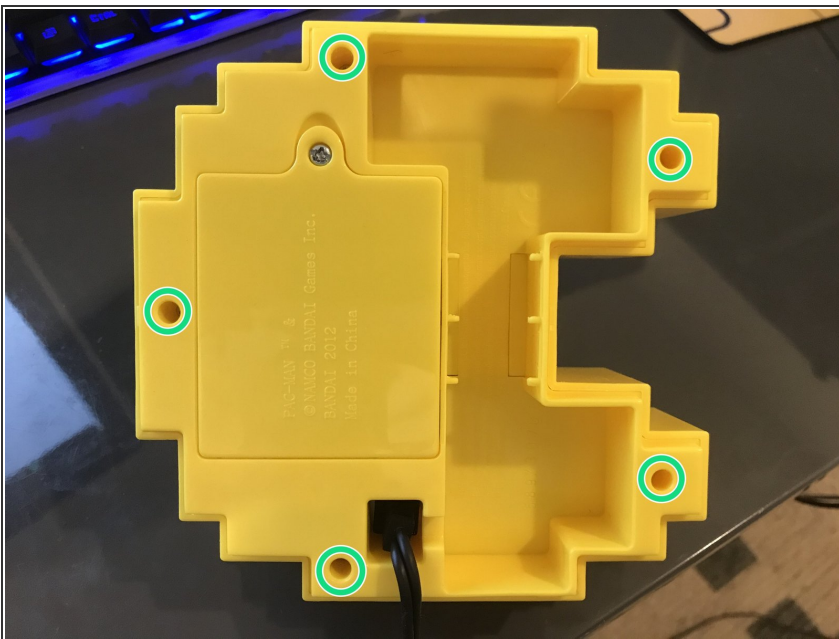
Step 1 — Power Switch



- Flip over the device

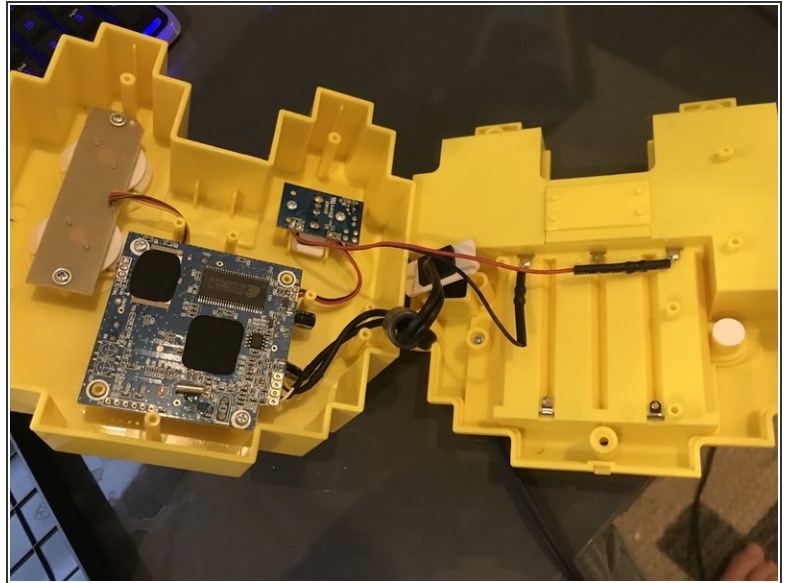
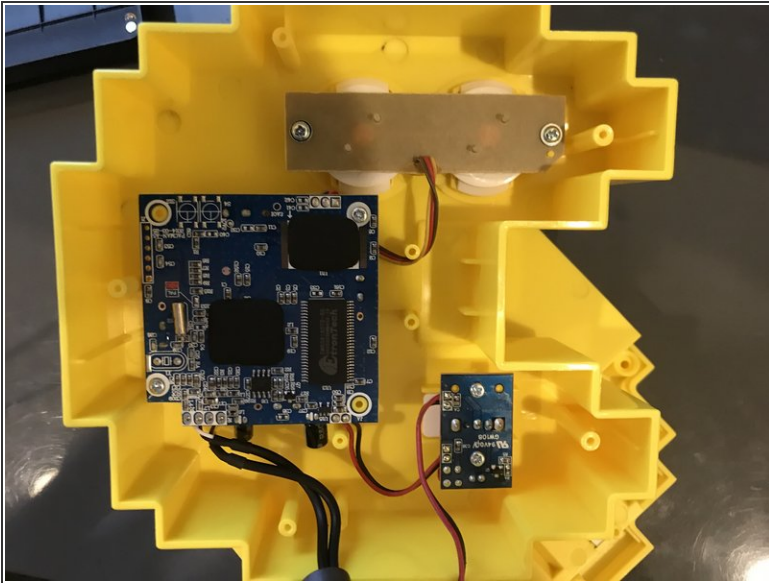
⚠ Ensure the device has no power, and isn't connected to a TV

Step 2



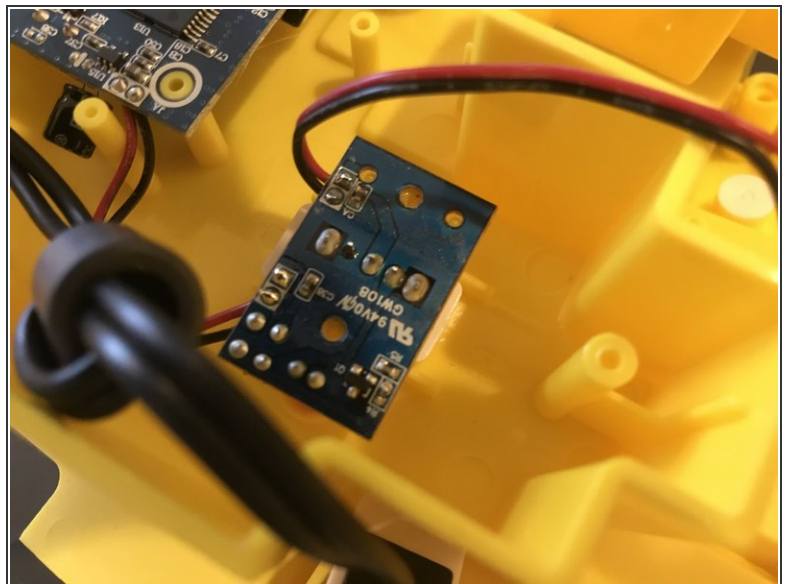
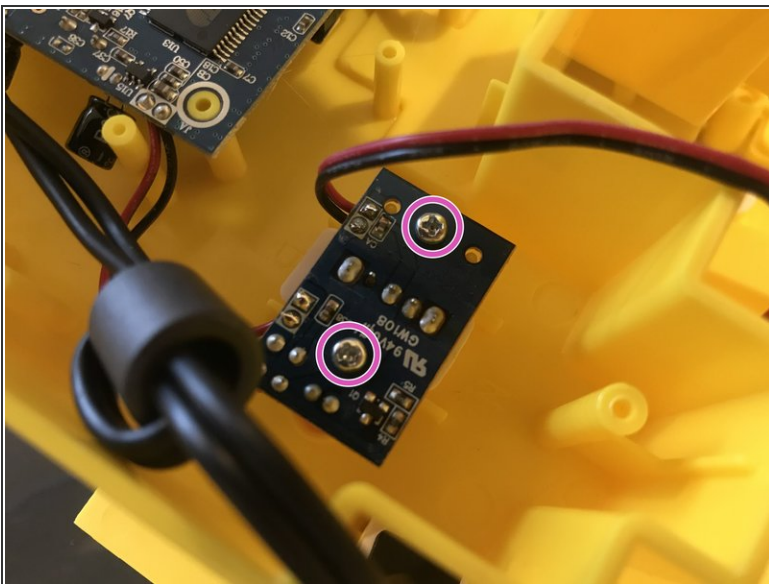
- Remove these 5 Phillips Head screws

Step 3



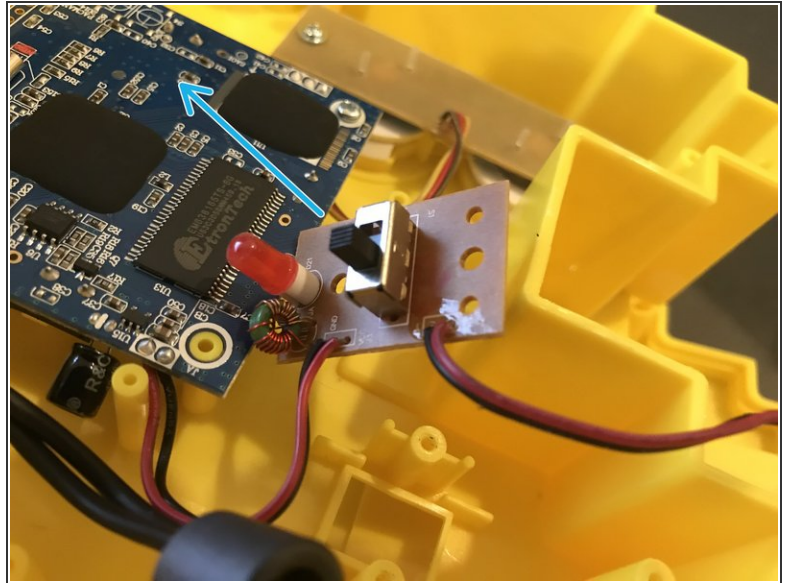
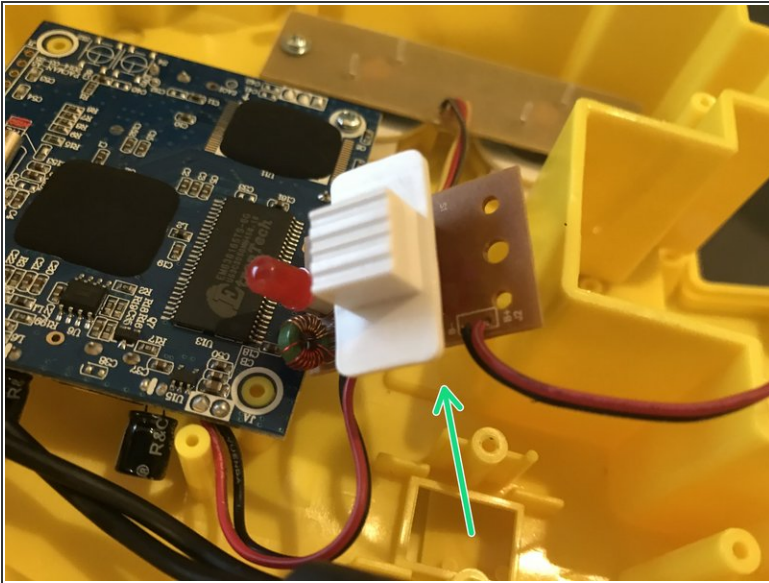
- You can now open the device

Step 4



- Remove these 2 screws (Phillips)

Step 5



- You can now lift away the power switch board
- You can also now remove the power switch.

To reassemble your device, follow these instructions in reverse order.