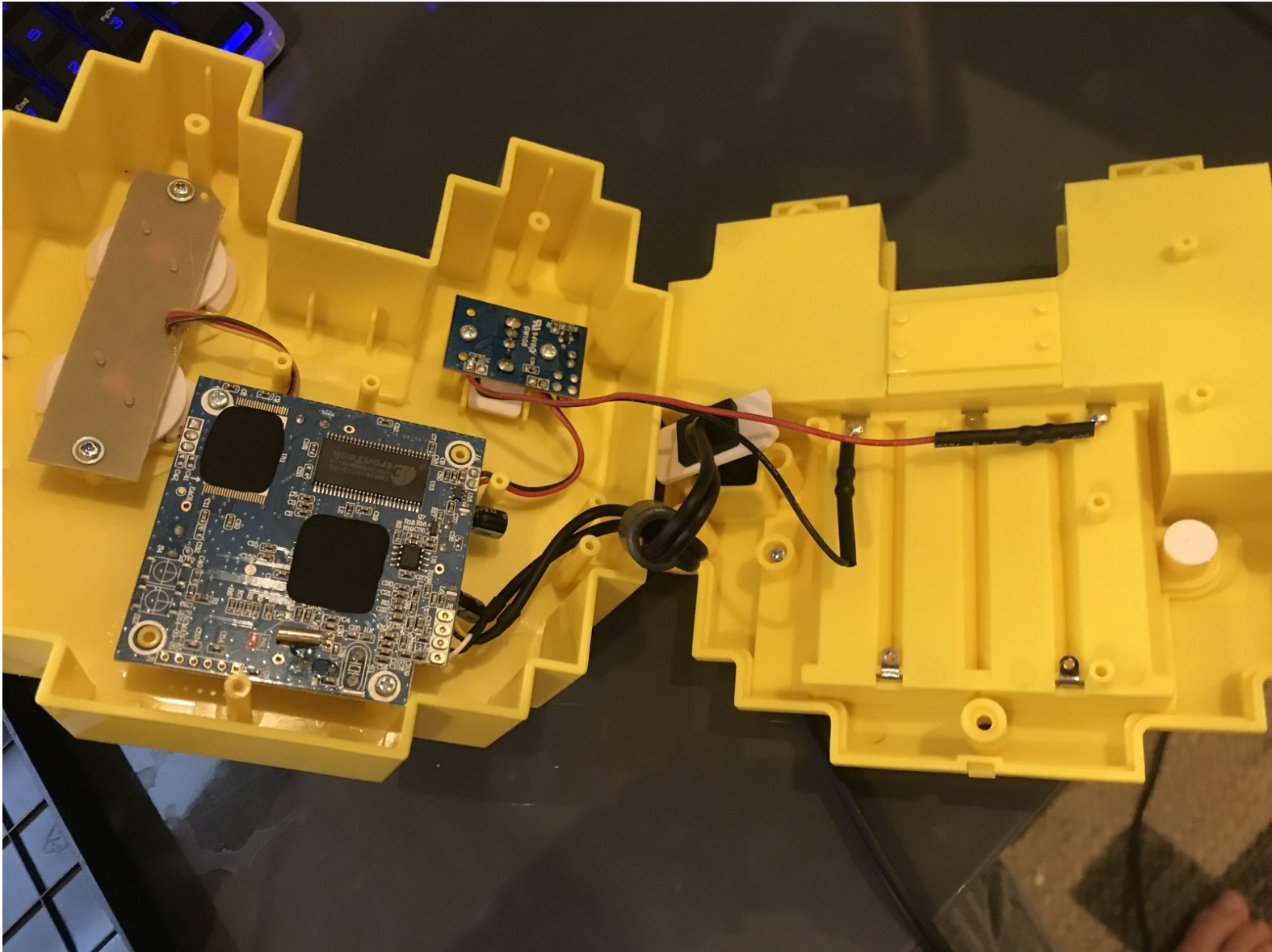




Pac-Man Connect and Play Teardown

Written By: Levi G

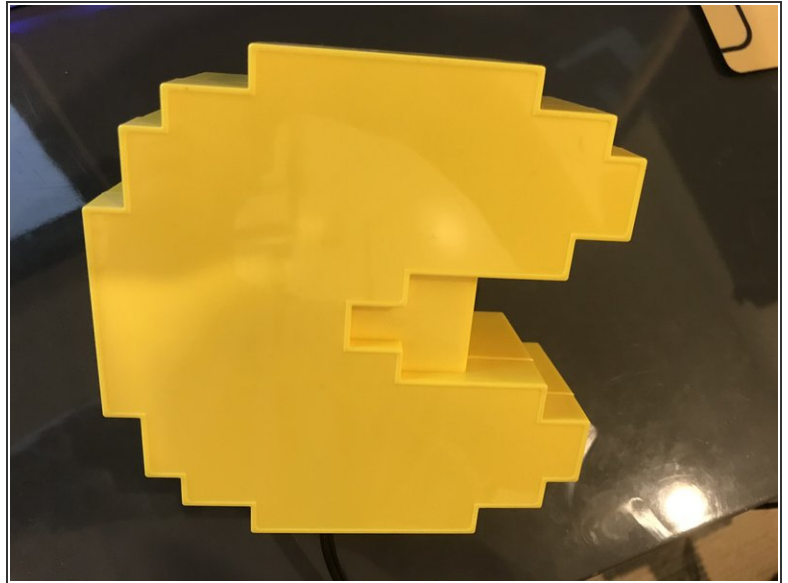
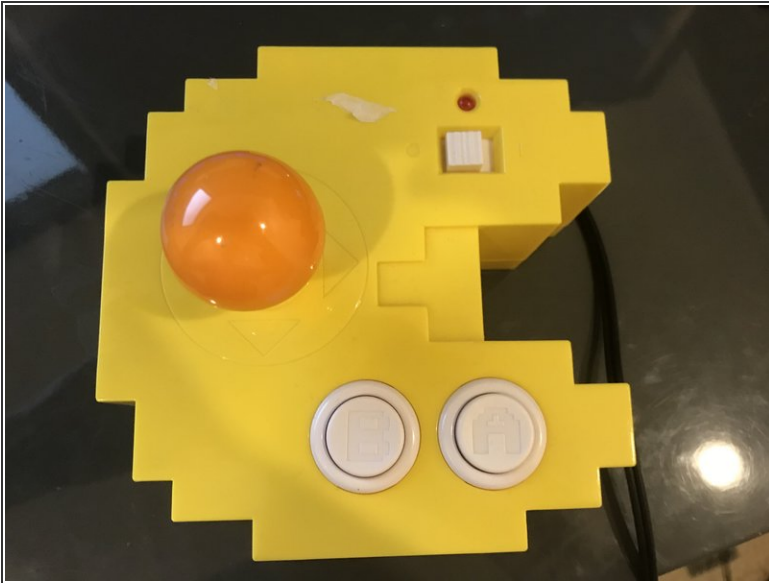




TOOLS:

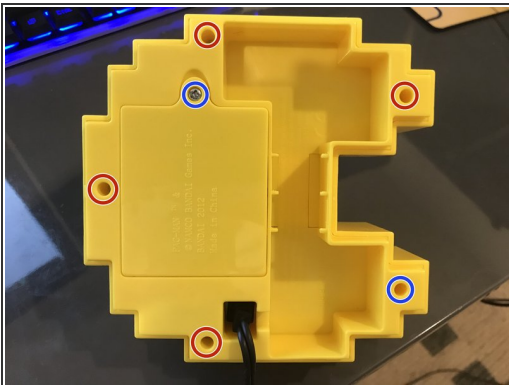
- [Philips Head Screwdriver: Size J1](#) (1)
-

Step 1 — Pac-Man Connect and Play Teardown



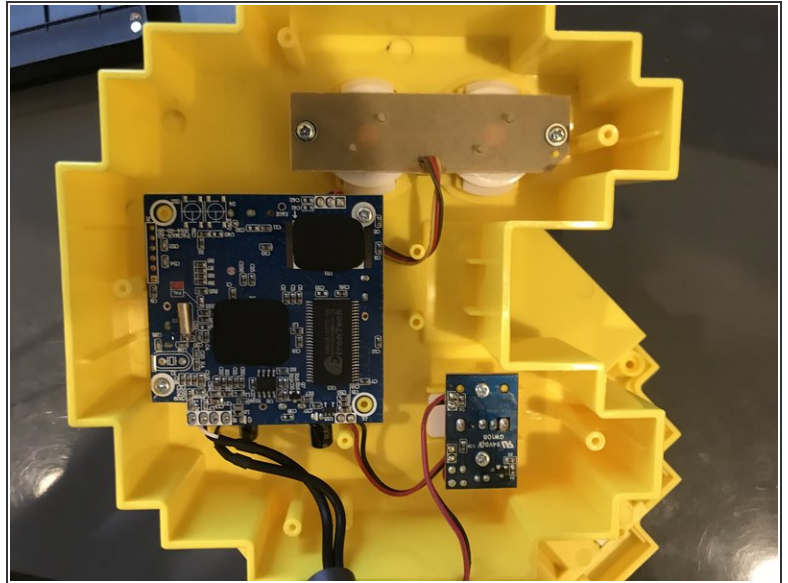
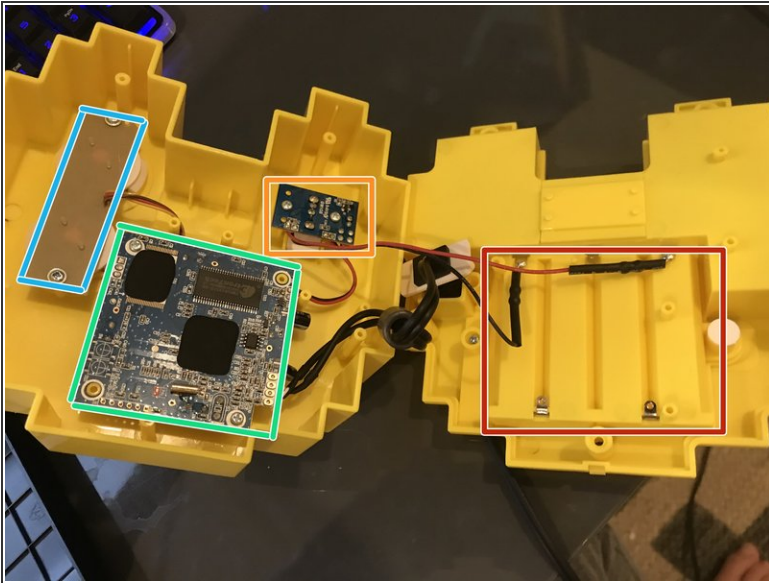
- I start by flipping over the device.

Step 2



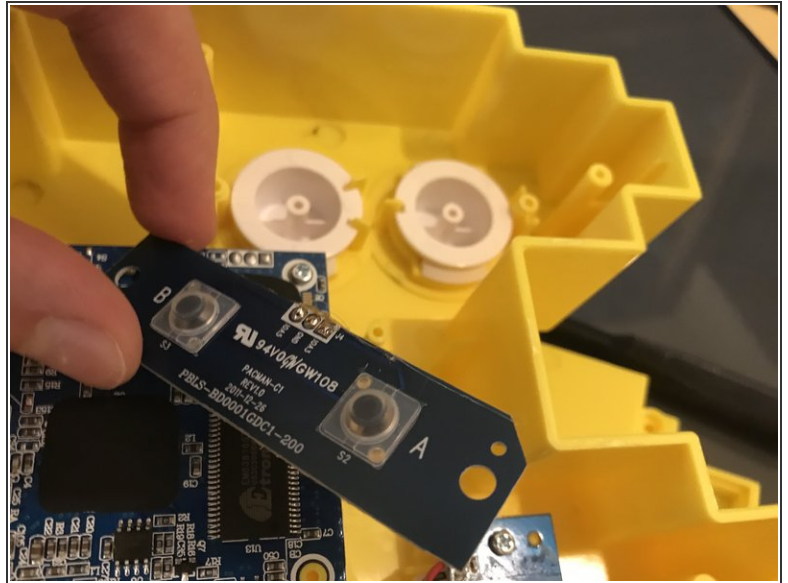
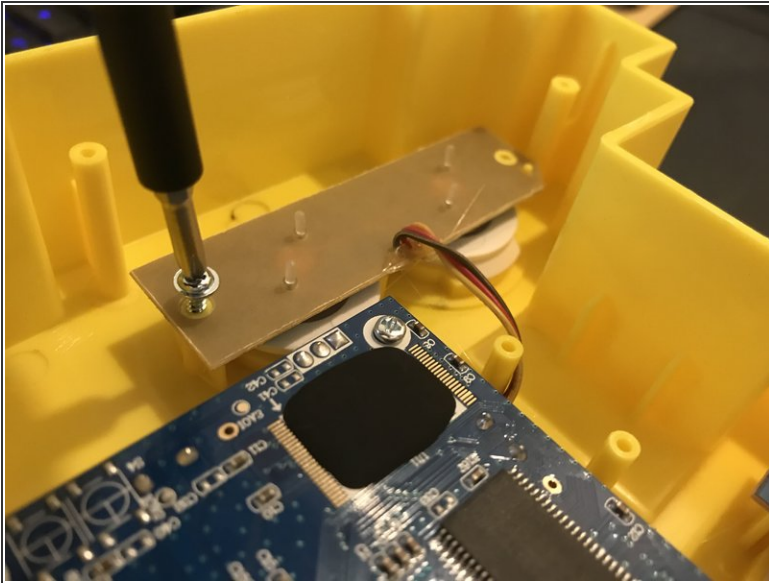
- I remove 5 Phillips head screws for the case
- And one more to remove the batteries

Step 3



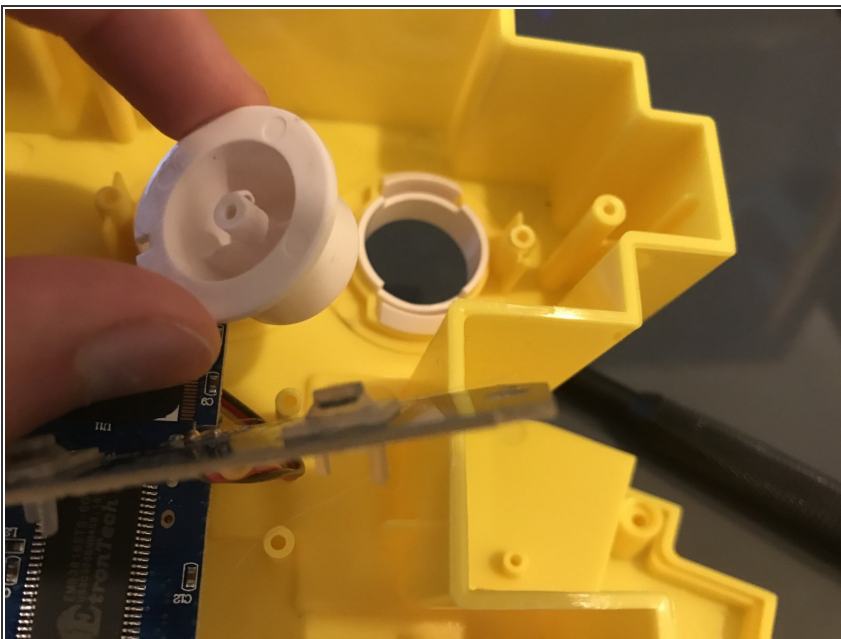
- Inside, all I see are glorious Phillips Head screws!
- Finally! Something [repairable](#)!
- Battery Compartment
- Power Switch and LED board
- Mainboard/Joystick board
- A and B button board

Step 4



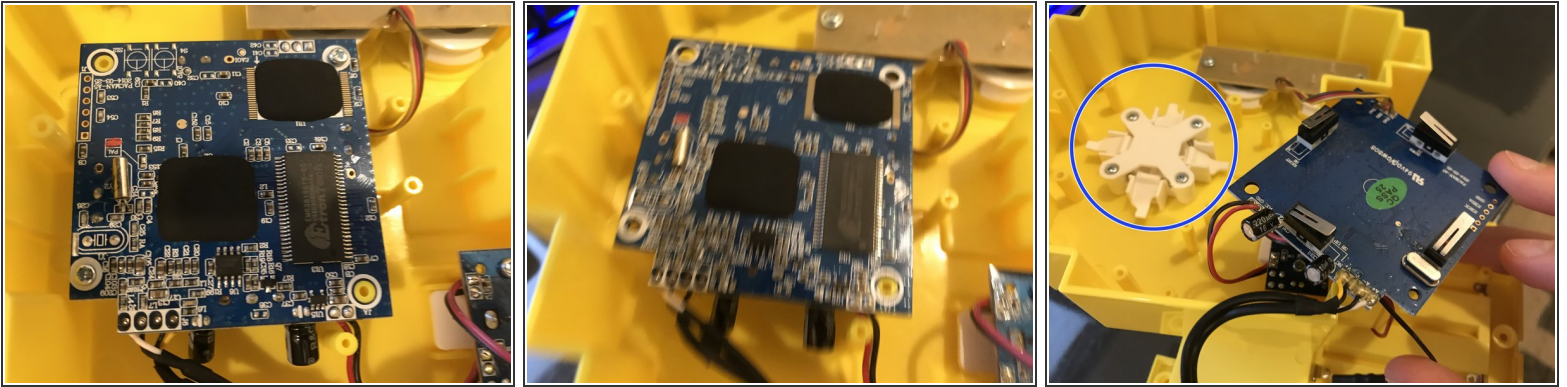
- I start with the buttons.

Step 5



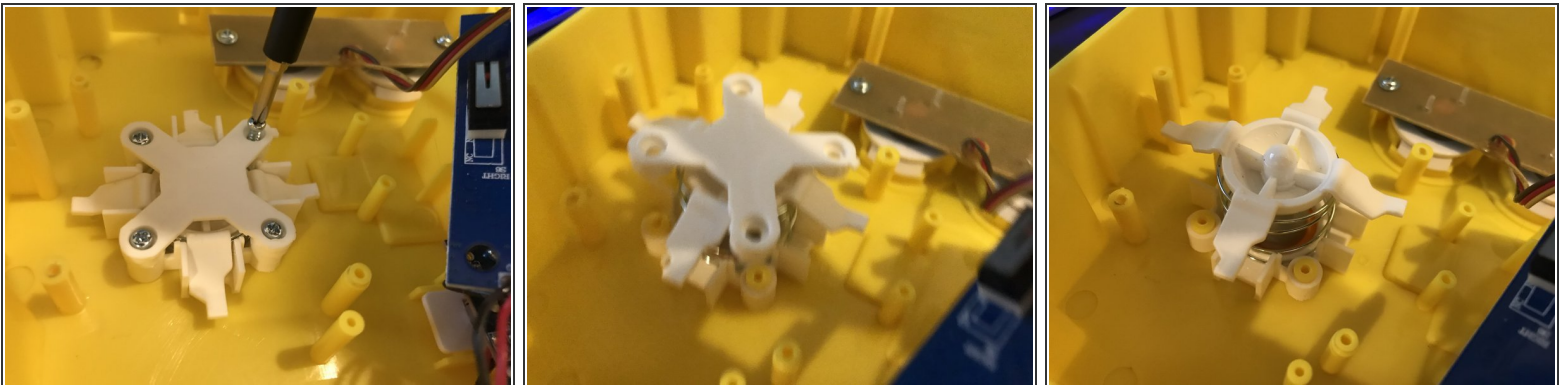
- They were very, very easy to get to and remove.

Step 6



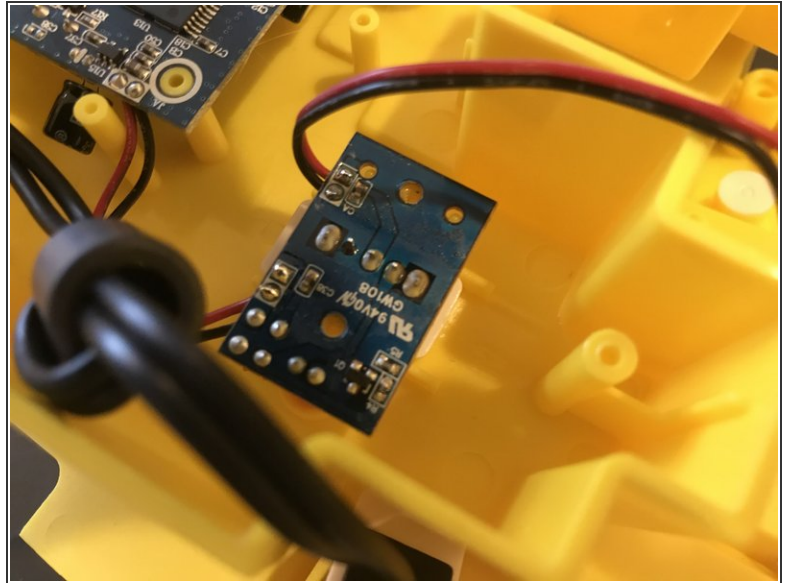
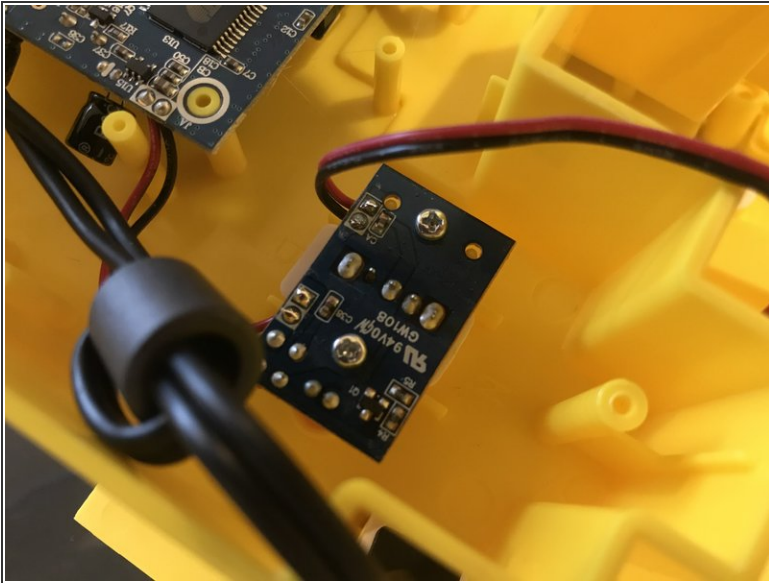
- Now, for the mainboard.
- 2 screws get me underneath.
- But, what's this?

Step 7



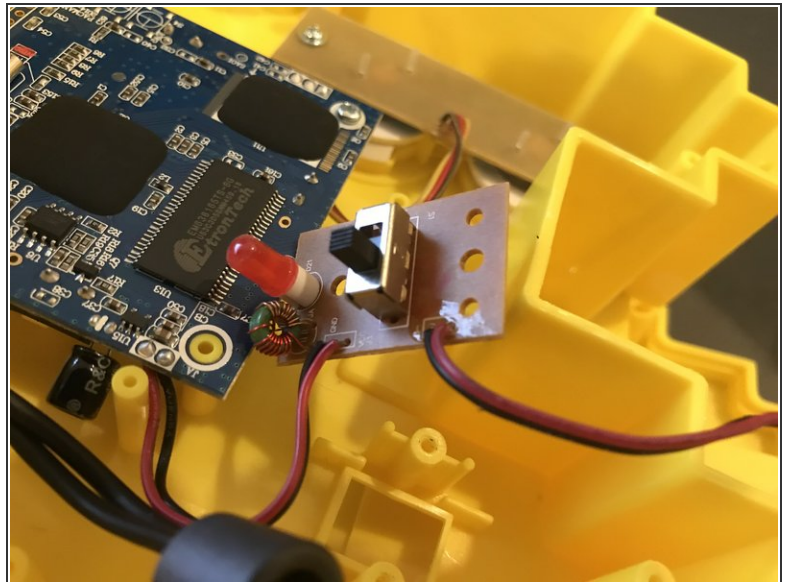
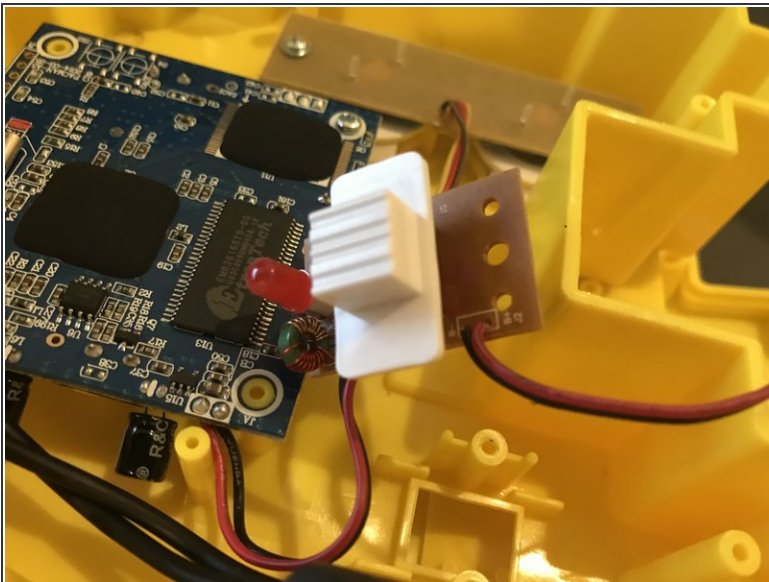
- Another 4 screws, and POP! it is holding a spring down, for the joystick.
- There did not appear to be an easy way to get the joystick out, however.

Step 8



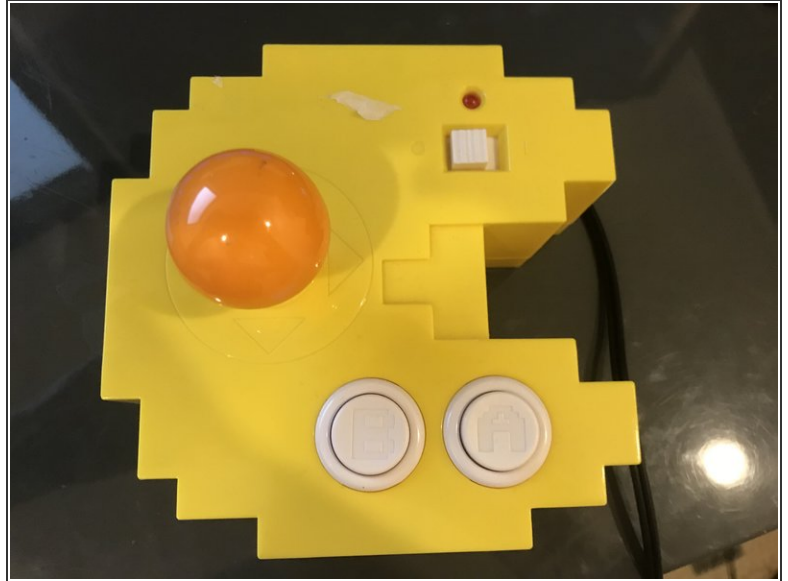
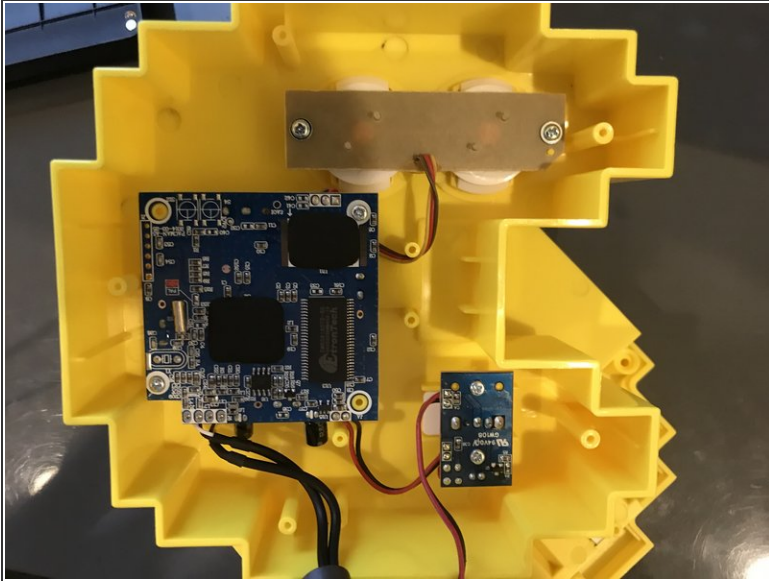
- Finally, I see a power regulator?

Step 9



- Nope! It's just the power switch and LED.

Step 10 — Conclusion



- In conclusion, I LOVE how it's all the J1 Phillips Head screw, throughout the entire device.
- It's easy to get under every board.
- There are, unfortunately, no plugs, and so everything is soldered on. This removes the possibility of replacing any electrical internals.