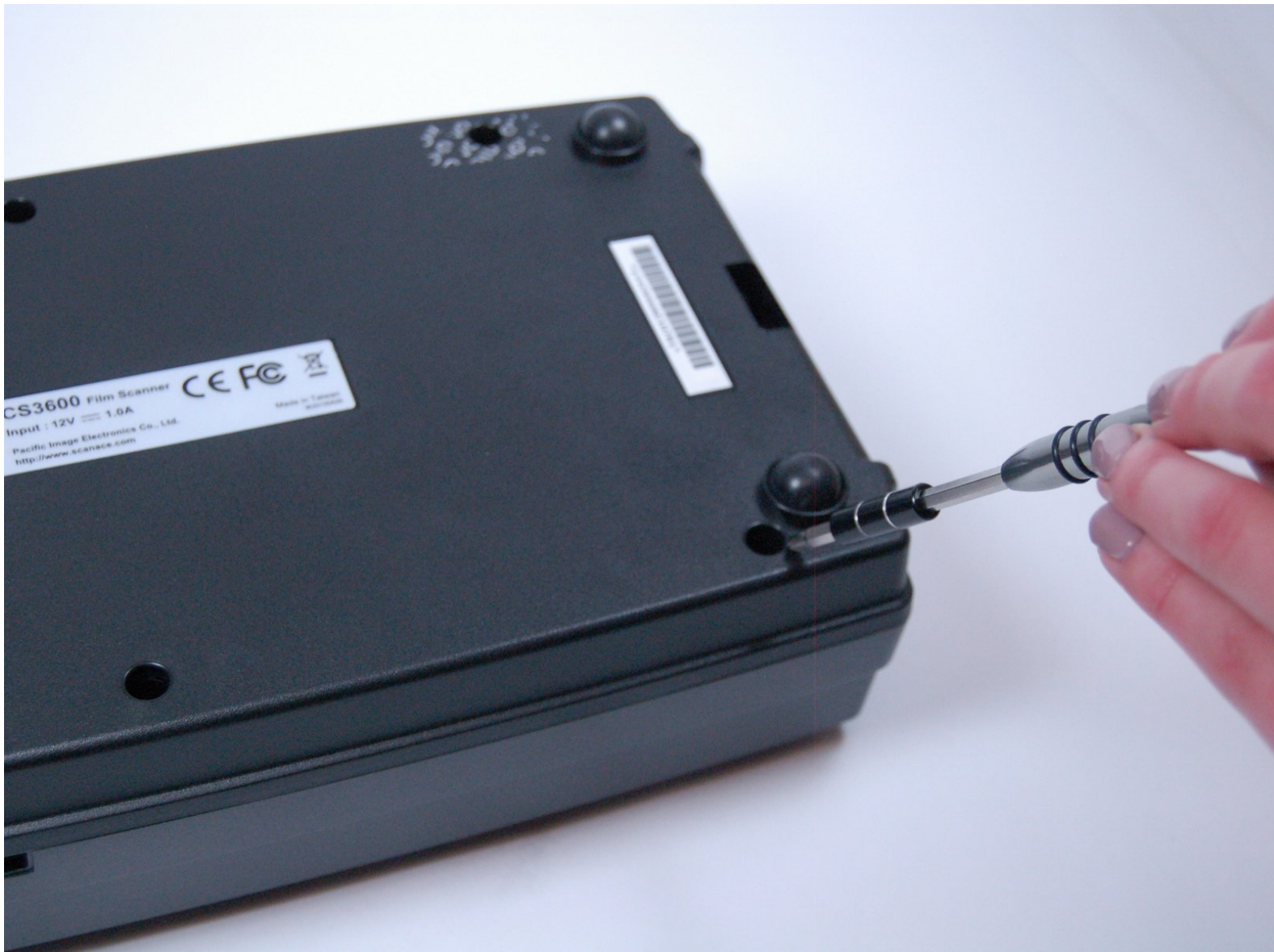




Pacific Image Electronics CS3600 Bulb Panel Replacement

Replace your dead bulb to bring light back to your Pacific Image Electronics CS3600 scanner.

Written By: Kristen Prince



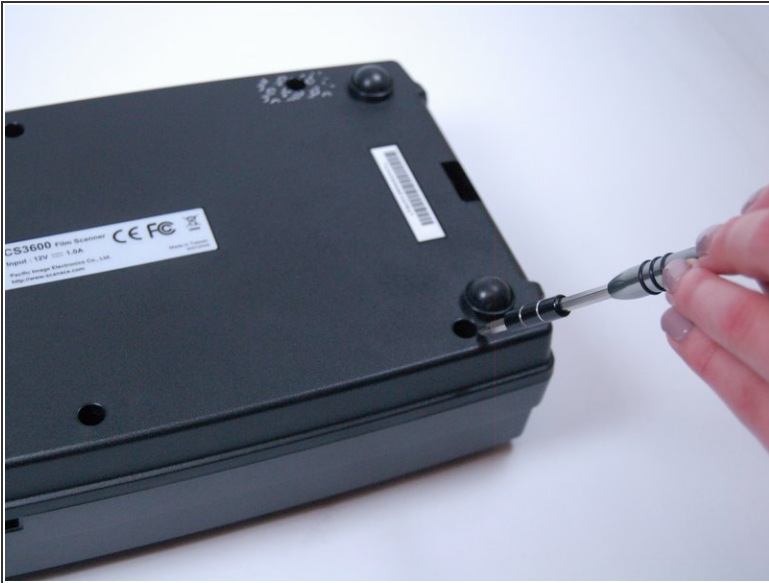
INTRODUCTION

Before you begin please be aware that you will be completely disassembling the device in order to get to the bulb inside. This will only require a Philips screw driver and able hands.

TOOLS:

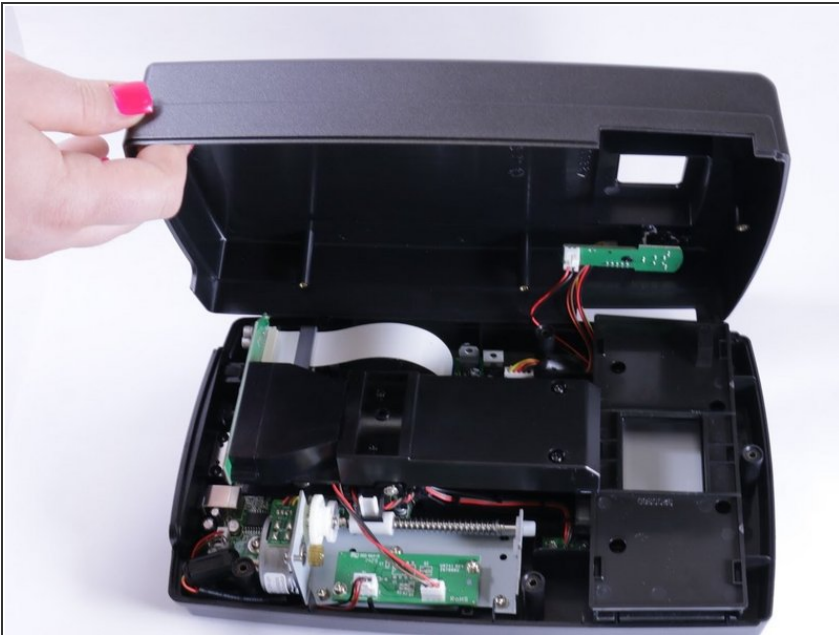
- [Phillips #1 Screwdriver](#) (1)
 - [iFixit Opening Tools](#) (1)
 - [Soldering Iron](#) (1)
-

Step 1 — Bulb Panel



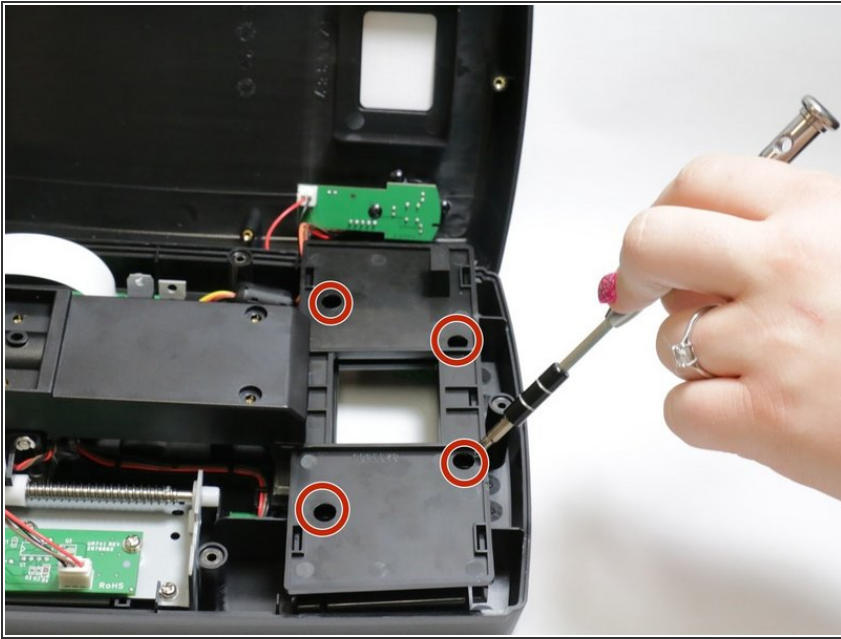
- Start by removing the 5 screws that are 5mm x 9mm located on the bottom of the device with a J1 screwdriver.

Step 2



- Now that the screws have been removed, carefully but firmly open up the device at the seam until it is presented as shown.

Step 3



- Use a J0 screwdriver to remove the following four screws that are 5mm x 9mm.

Step 4



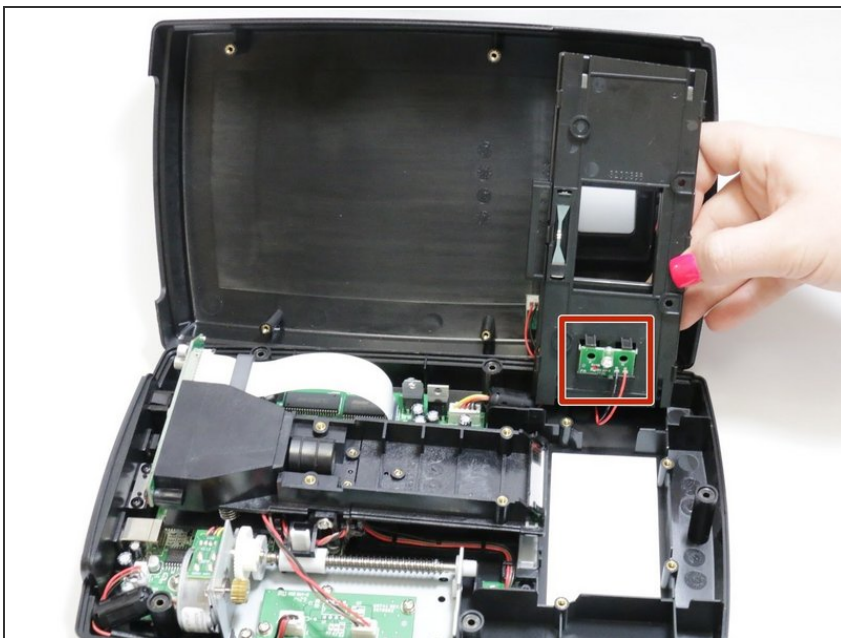
- Use the same J0 screwdriver to remove the following 3 screws that are 7mm x 6mm.

Step 5



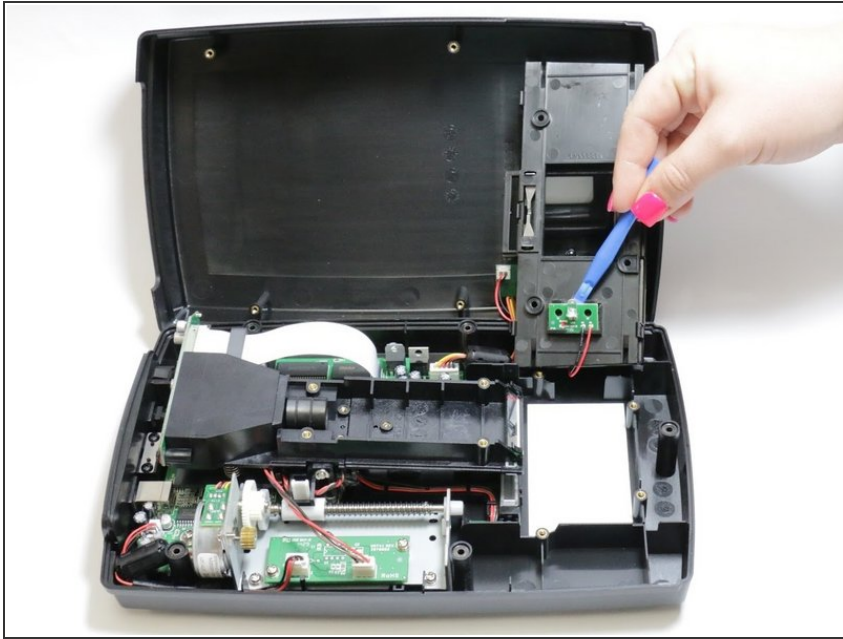
- Now grab the plastic cover you just removed screws from and gently remove it from the device.

Step 6



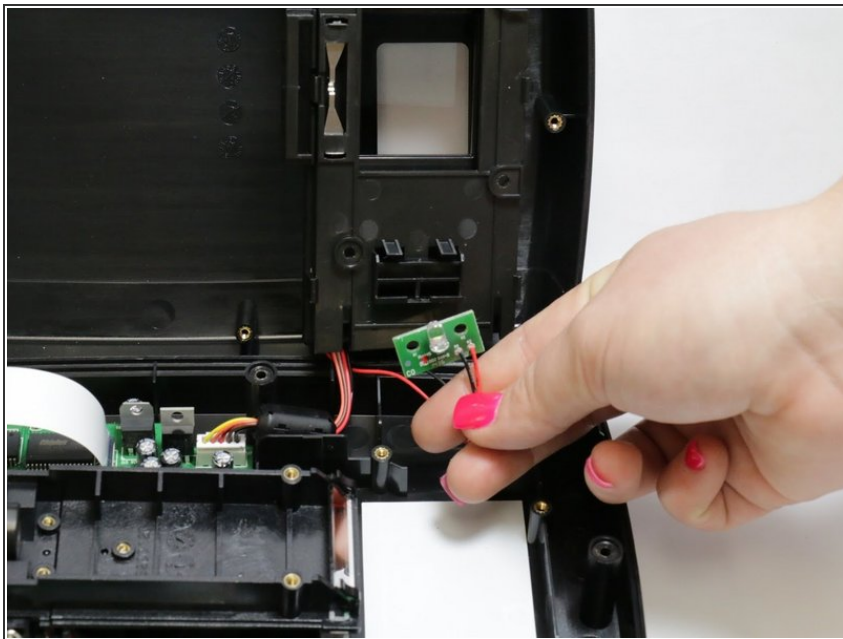
- You may now pick up the plastic covering you removed screws from in Step 3 with ease revealing the bulb.

Step 7



- Lodge the plastic opening tool underneath the bulb casing. Using some upward force, pop the bulb off the casing.

Step 8



- You have now removed the bulb from the casing. Gently pull the wires forward and prepare a soldering station.

Step 9



- Carefully desolder the 2 wires from their solder contact points to detach the bulb panel from the motherboard.

To reassemble your device, follow these instructions in reverse order.