



Pacific Image Electronics CS3600 Lens Replacement

Replace your lens to capture images again on your scanner

Written By: Kristen Prince



INTRODUCTION

The only tool required for lens removal is a JIS (J0) screwdriver bit. Replacing the lens will enable you to continue scanning images onto a computer.



TOOLS:

- [JIS Driver Set](#) (1)

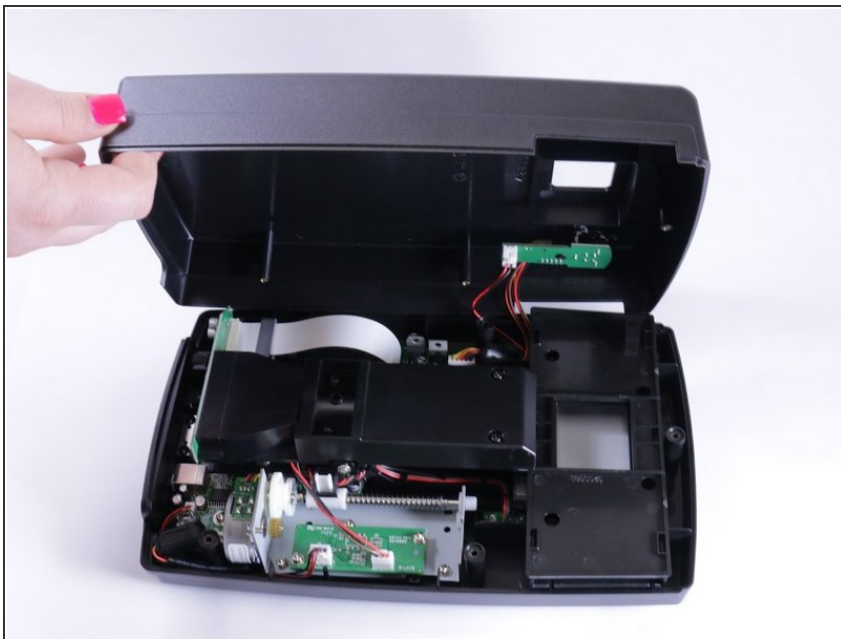
J0

Step 1 — Lens



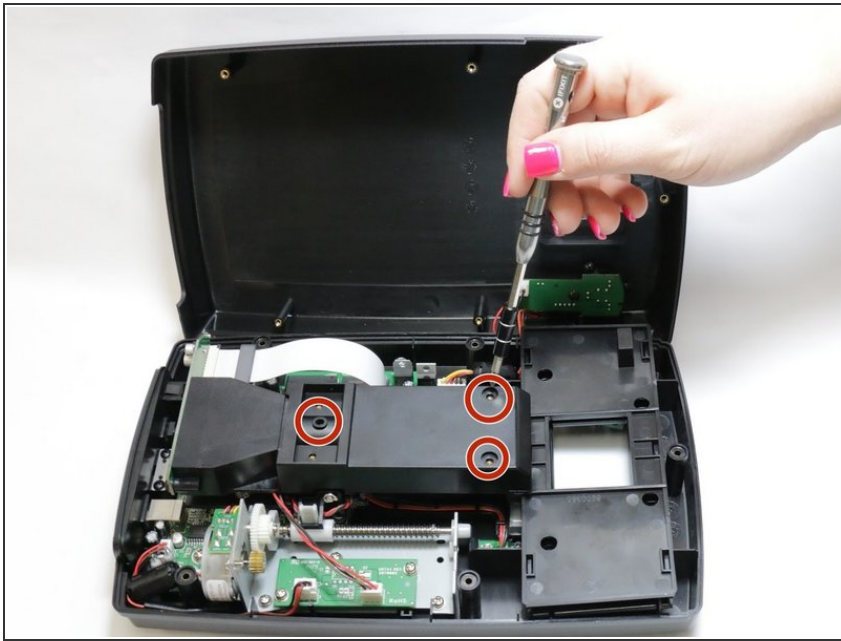
- Use the J0 screwdriver to remove the 5 following screws that are 9 mm x 7 mm.

Step 2



- Using light force open the device by pulling at the seam.

Step 3



- Use the J0 screwdriver to remove the screws that are 7 mm x 6 mm.

Step 4



- Once the screws are removed and casing removed the lens is revealed.

Step 5



- Simply remove the lens and replace accordingly!

To reassemble your device, follow these instructions in reverse order.