



Palm Centro Screen Replacement

Written By: Tony



INTRODUCTION

This guide is for the removal and replacement of the Palm Centro's screen.



TOOLS:

- [T5 Torx Screwdriver](#) (1)
 - [Tweezers](#) (1)
 - [iFixit Opening Tools](#) (1)
-


Step 1 — Disassembling Palm Centro Battery



- Press and slide open the battery cover.

Step 2



 **Caution:** Turn cell phone off before removing battery!

- Press battery to the right.
- Then lift up battery pack to remove.

Step 3



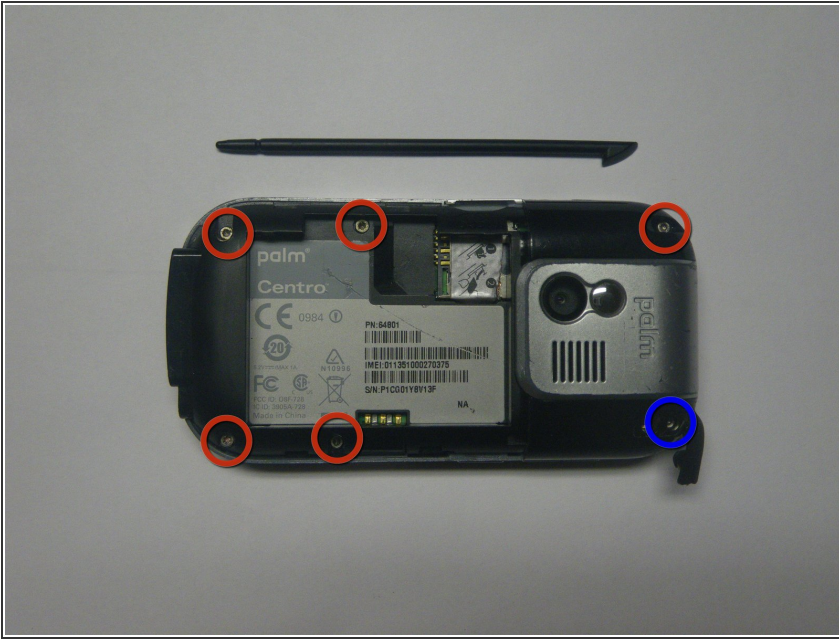
- Phone with battery removed

Step 4 — Back Housing



- Remove the touchpad pen from the top left corner on the back to reveal the last of 6 screws to be removed.

Step 5



- Lift the rubber cap at the top right to reveal the sixth screw.

⚠ Caution: There is a small Palm sticker under the rubber cap. Tampering with or removing this sticker will void your warranty!

- Remove the six screws using the T5 Torx screwdriver.

Step 6



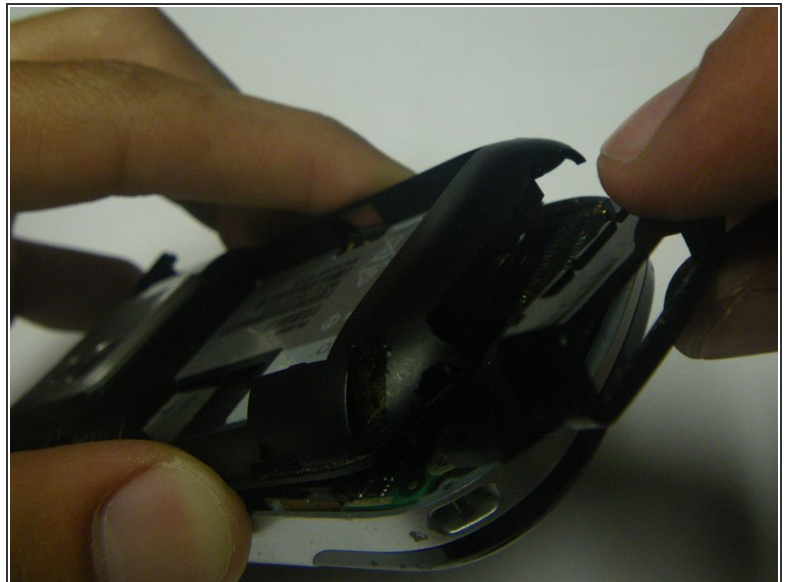
- Remove the SIM card so housing can be separated.

Step 7



- Use a plastic pry tool to separate the bottom of the case to remove the small plastic insert.

Step 8



- Remove the small plastic insert at the bottom of the phone.

Step 9



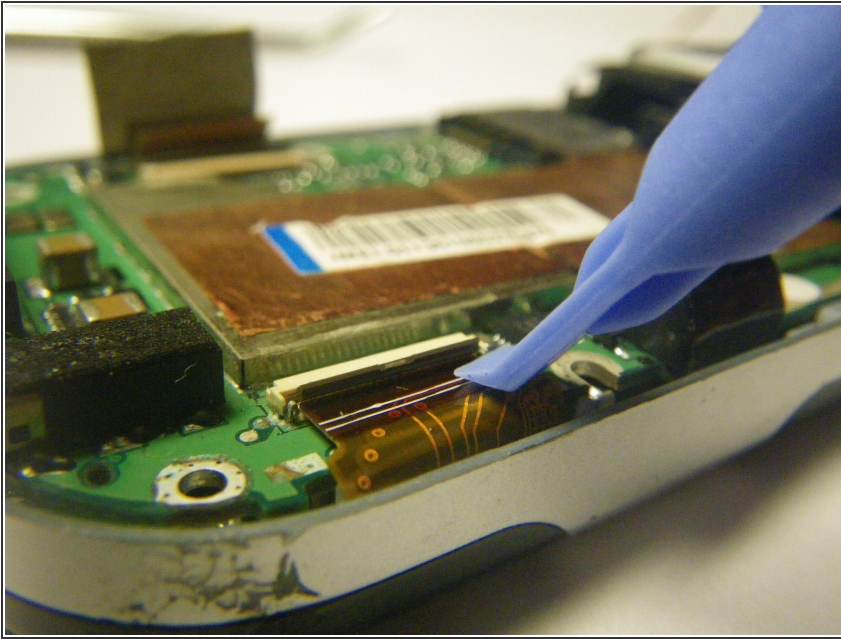
- Continue with plastic pry tool all the way around the phone to remove the back housing.

Step 10 — Logic Board



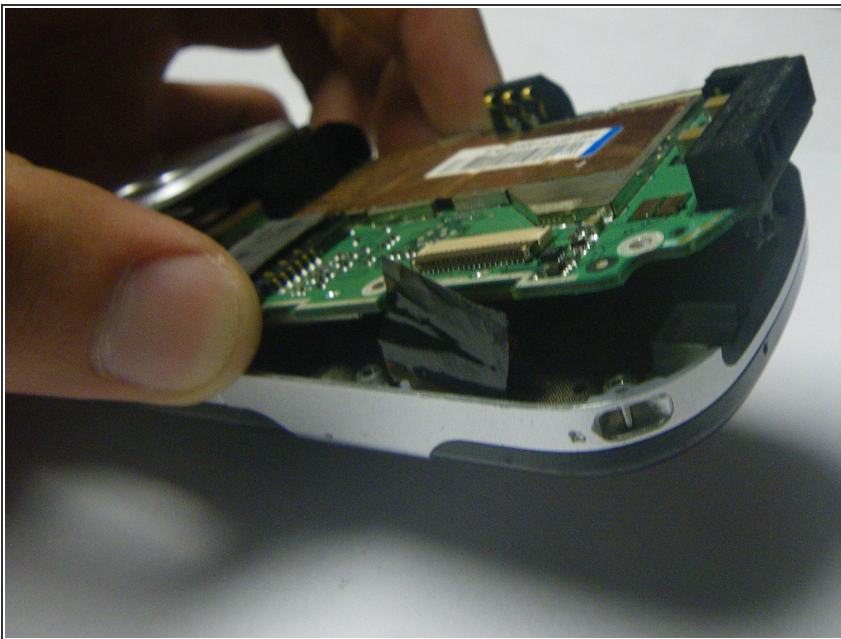
- Carefully peel back the tape holding the speaker (left) and keyboard (right) connection tabs in place.

Step 11



- Using the plastic prying tool, lift the tabs and carefully pull the contact connections out on both sides.
- ⚠ Be very careful, these electronics are delicate!

Step 12



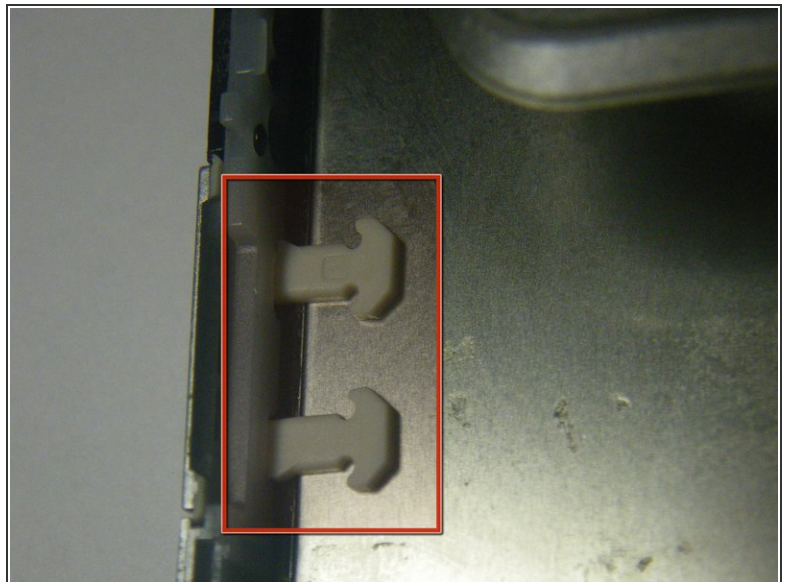
- Separate the logic board from the case by lifting and pulling out the bottom.

Step 13 — Screen



- Slowly peel off the protective lining that is on the screen and keyboard.

Step 14



- Lift and slowly remove the screen from the front panel
- Place the new screen into the front panel

⚠ Make sure the new screen goes in under the plastic tabs for the additional memory slot door or it may not close properly once the phone is put back together.

To reassemble your device, follow these instructions in reverse order.