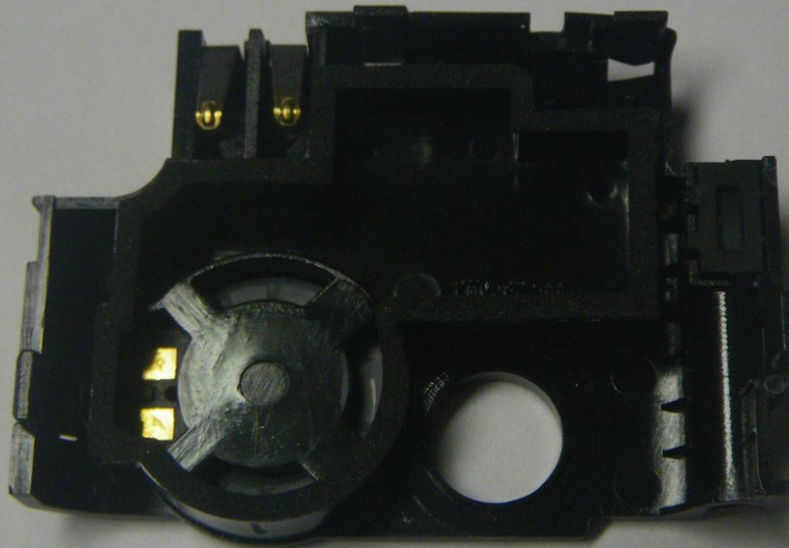




Palm Centro Speakers Replacement

Written By: Kevin



INTRODUCTION

This guide show you how to remove and replace the Palm Centro's speakers



TOOLS:

- [Spudger](#) (1)
 - [T5 Torx Screwdriver](#) (1)
-


Step 1 — Disassembling Palm Centro Battery



- Press and slide open the battery cover.

Step 2



 **Caution:** Turn cell phone off before removing battery!

- Press battery to the right.
- Then lift up battery pack to remove.

Step 3



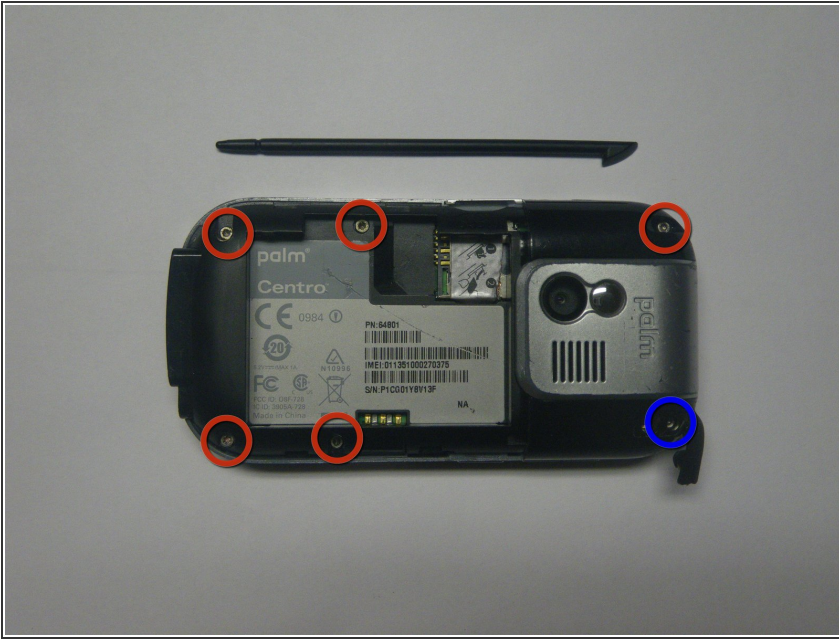
- Phone with battery removed

Step 4 — Back Housing



- Remove the touchpad pen from the top left corner on the back to reveal the last of 6 screws to be removed.

Step 5



- Lift the rubber cap at the top right to reveal the sixth screw.

⚠ Caution: There is a small Palm sticker under the rubber cap. Tampering with or removing this sticker will void your warranty!

- Remove the six screws using the T5 Torx screwdriver.

Step 6



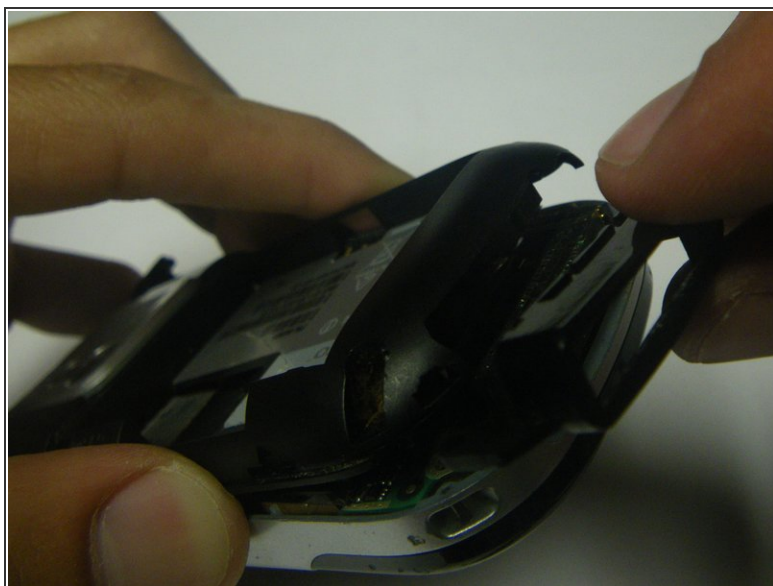
- Remove the SIM card so housing can be separated.

Step 7



- Use a plastic pry tool to separate the bottom of the case to remove the small plastic insert.

Step 8



- Remove the small plastic insert at the bottom of the phone.

Step 9



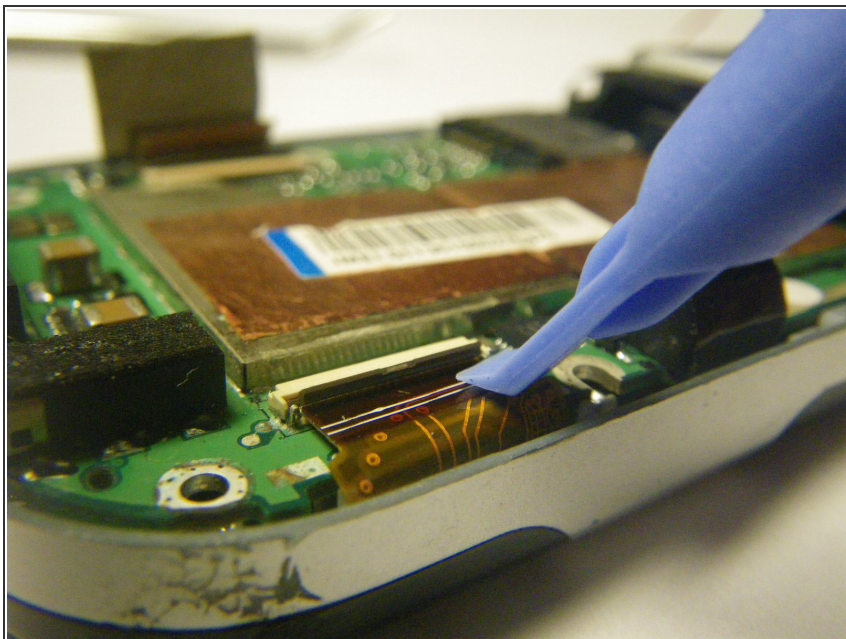
- Continue with plastic pry tool all the way around the phone to remove the back housing.

Step 10 — Logic Board



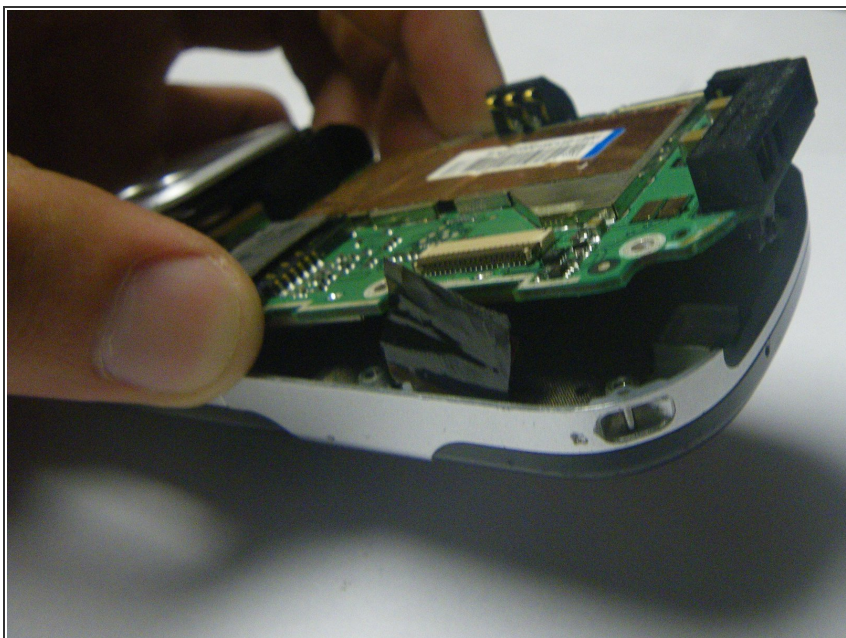
- Carefully peel back the tape holding the speaker (left) and keyboard (right) connection tabs in place.

Step 11



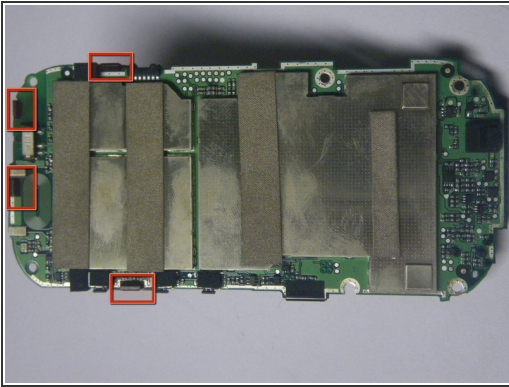
- Using the plastic prying tool, lift the tabs and carefully pull the contact connections out on both sides.
- ⚠ Be very careful, these electronics are delicate!

Step 12



- Separate the logic board from the case by lifting and pulling out the bottom.

Step 13 — Speakers

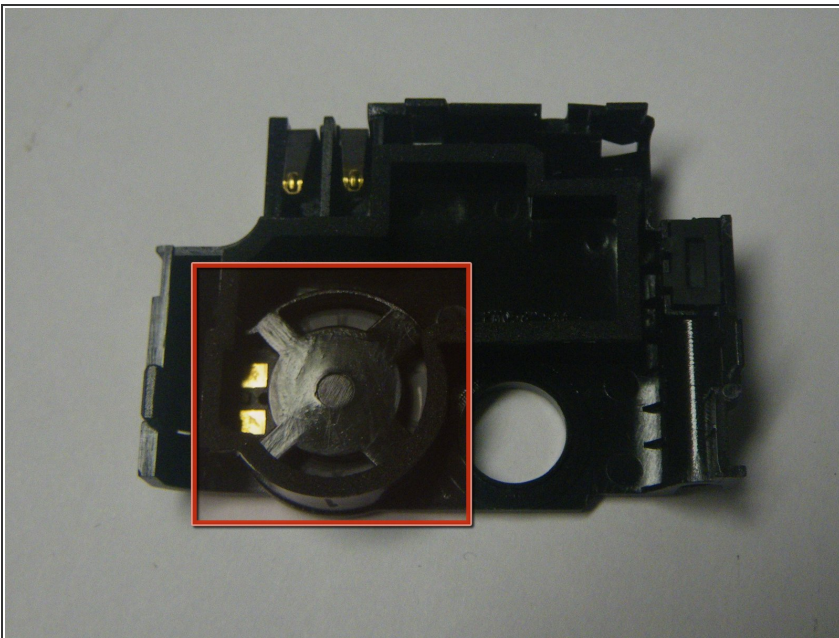


- Pry the four plastic latches free that connect the antenna to the logic board.

⚠ Excessive force may damage your logic board!

- Remove the antenna from the logic board.

Step 14



- The internal speaker is attached to the antenna. To remove it, pry the speaker from the antenna using the tip of your screwdriver.
- ⓘ The speaker should be placed back into its spot in the correct position. Take notice of the gold connectors

To reassemble your device, follow these instructions in reverse order.