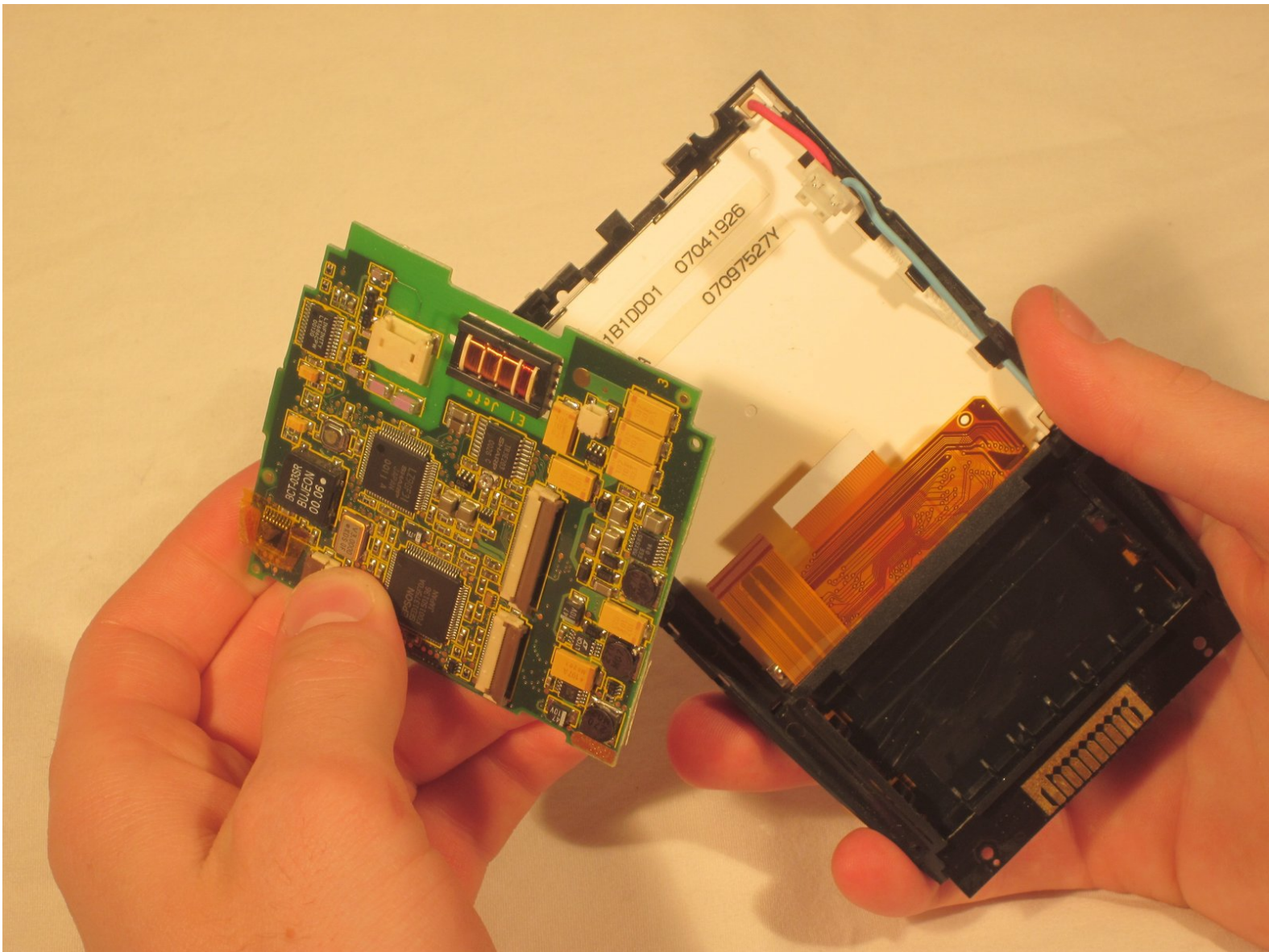




Palm IIIc Motherboard Replacement

This guide will show you how to step by step, remove and replace the motherboard on your Palm IIIc.

Written By: Paulina Trujillo



INTRODUCTION

Follow this guide to remove and replace your Palm IIIc's motherboard.



TOOLS:

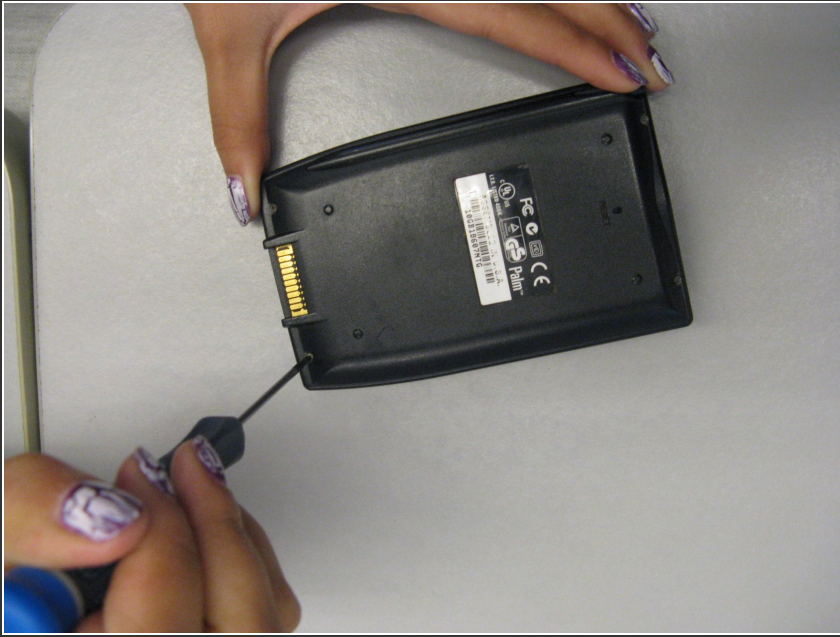
- [Phillips #00 Screwdriver](#) (1)
 - [Spudger](#) (1)
-

Step 1 — Removing broken LCD screen



- Keep track of all pieces removed from the device.
- Gently pull off the device cover. The cover snaps on and off easily where the cover attaches to the Palm IIIc device

Step 2



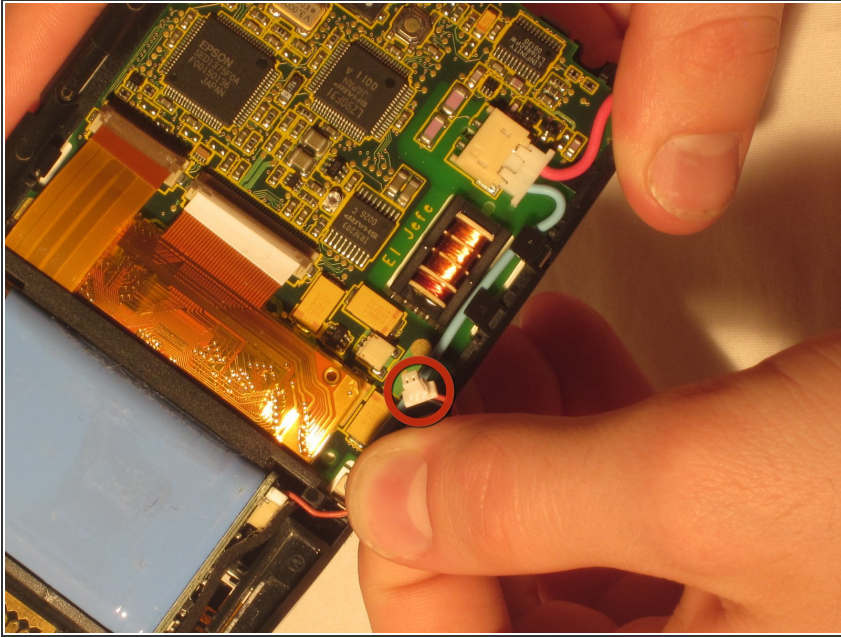
- Using a Phillips head screwdriver, take out the four screws on the back of the device. You may have to pull them out with your hands once they are unscrewed.
- ★ There will be two long screws and two short screws. The long screws come from the top of the device, and the short screws come from the bottom of the device.

Step 3 — Remove the Front and Back Covers



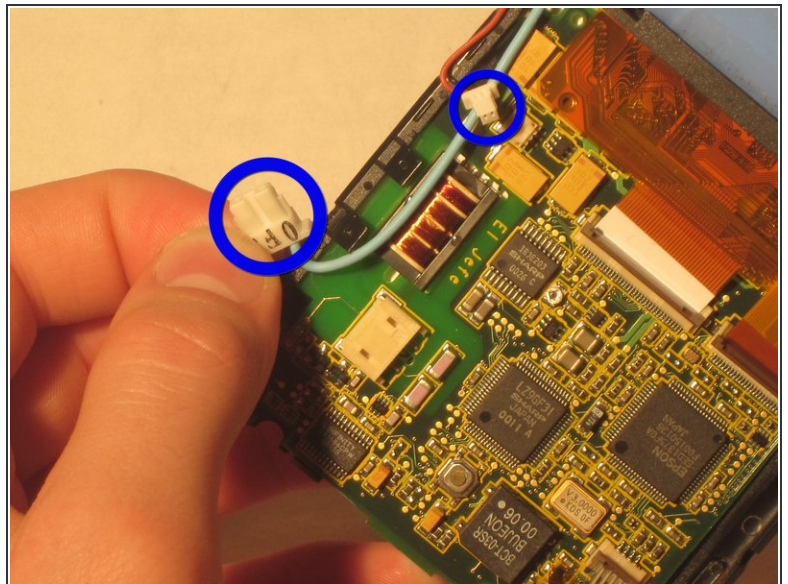
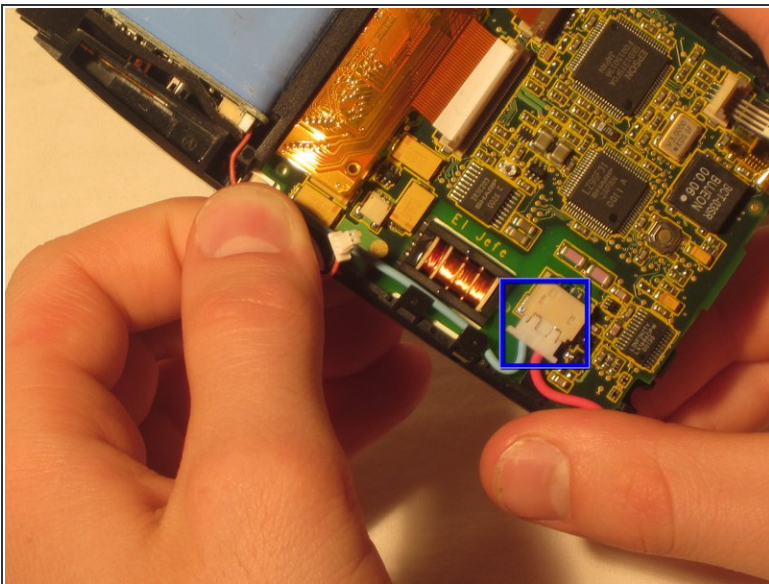
- Using a spudger, carefully pry open the front and back covers along the side seam.
- ⓘ A small sensor cover will fall out when the front and back covers are removed. Keep track of it.

Step 4 — Motherboard



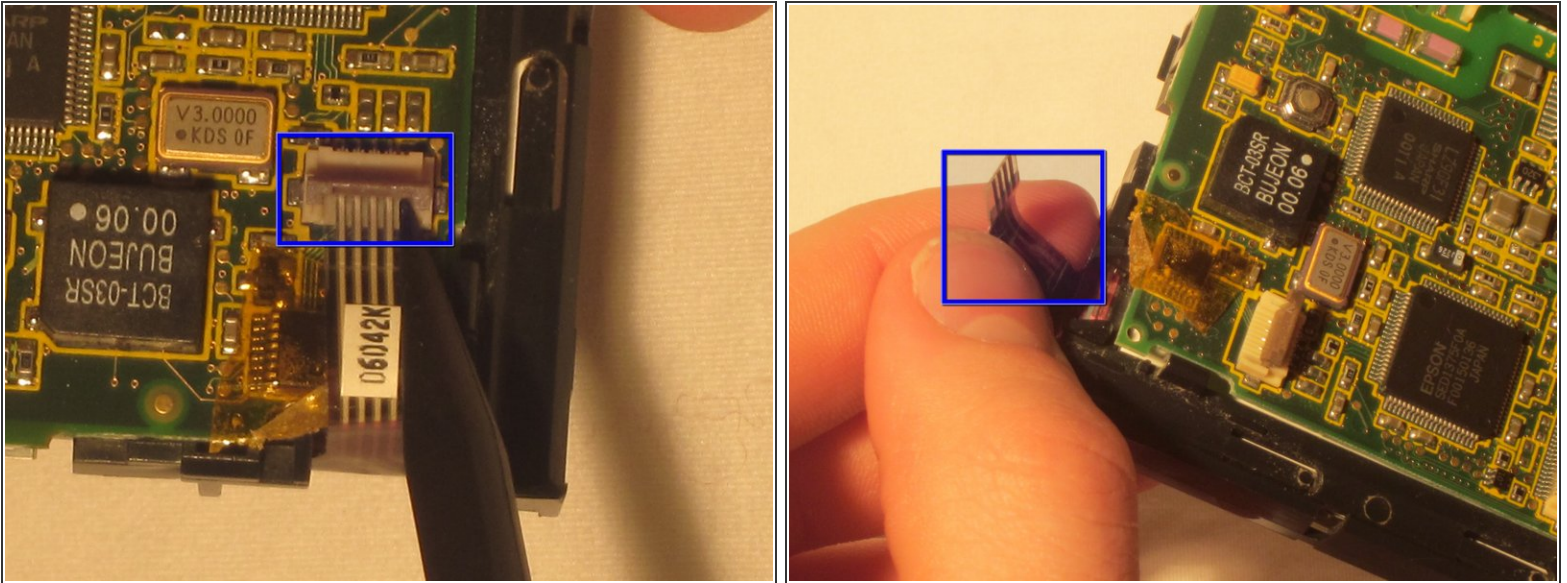
- Screen-side down, unhook the battery cable from the motherboard.

Step 5



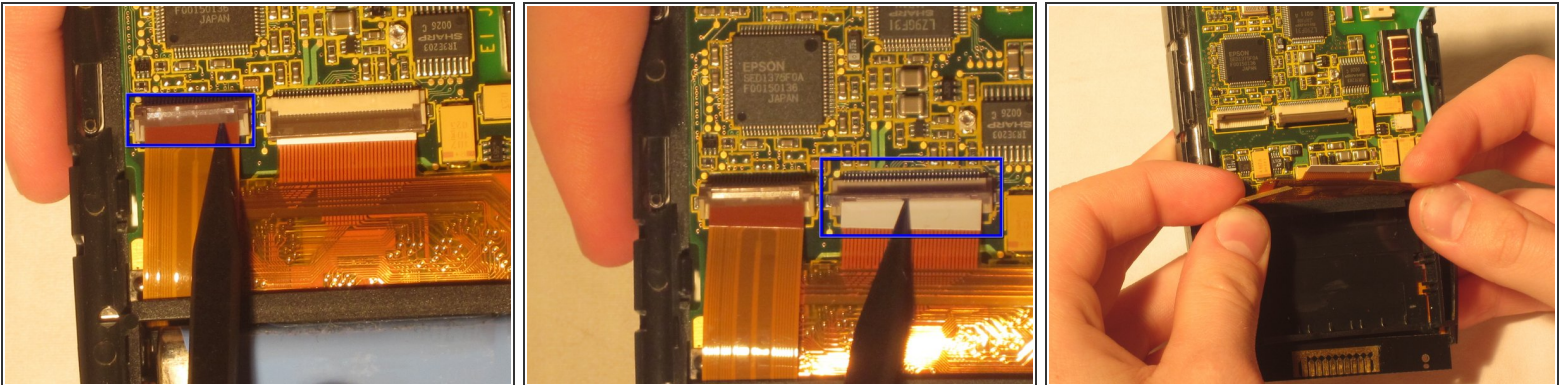
- Unhook the blue and red screen cables.

Step 6



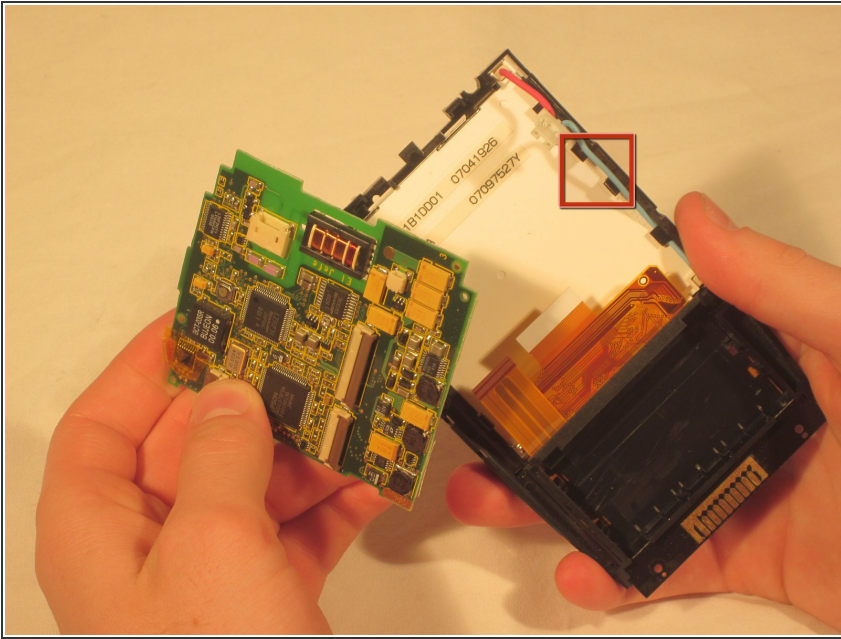
- On the back of the motherboard near the top, gently lift up the flap that holds the ZIF connector tab in place. This will allow you to pull out the ZIF connector tab.

Step 7



- Located near the bottom of the motherboard will be two ZIF connector tabs. Gently lift up the flap that secures these tabs and remove the tabs.

Step 8



- Gently bend back the black clips that secure the motherboard.
- Remove the motherboard starting from the left side and pull it out away from the clips.

To reassemble your device, follow these instructions in reverse order.