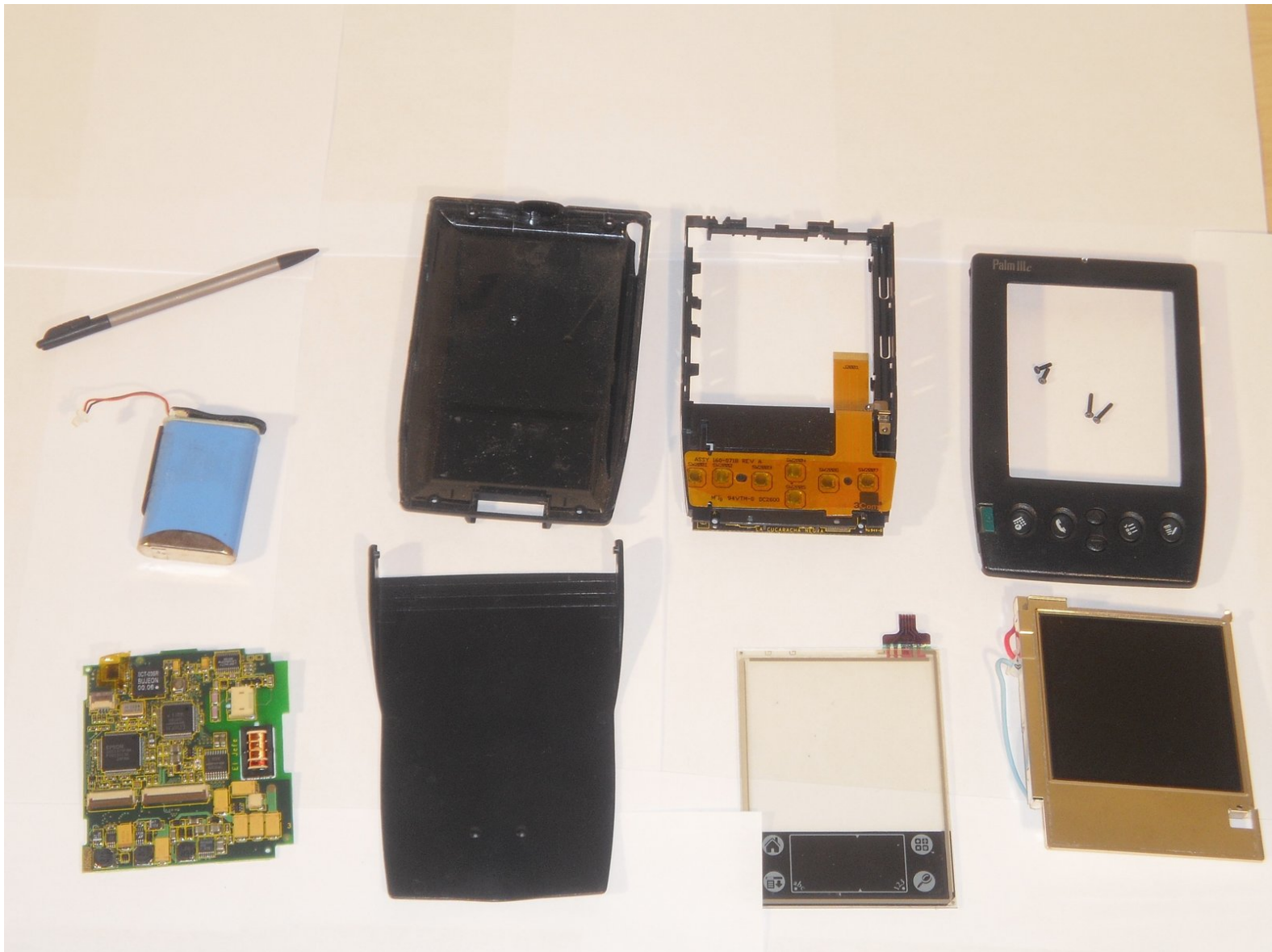




# Palm IIIc Teardown

This guide will show you how to step by step, how to tear apart your Palm IIIc.

Written By: Paulina Trujillo



---

# INTRODUCTION

Follow this guide to completely disassemble your Palm IIIc.



## TOOLS:

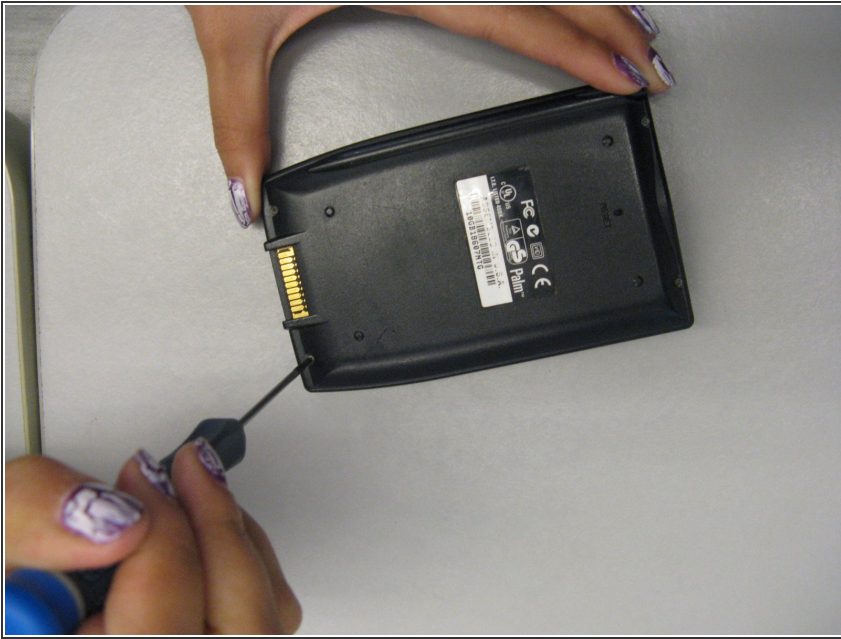
- [Phillips #00 Screwdriver](#) (1)
  - [Spudger](#) (1)  
*called "prying tool" in the guide*
-

## Step 1 — Removing broken LCD screen



- Keep track of all pieces removed from the device.
- Gently pull off the device cover. The cover snaps on and off easily where the cover attaches to the Palm IIIc device

## Step 2



- Using a Phillips head screwdriver, take out the four screws on the back of the device. You may have to pull them out with your hands once they are unscrewed.
- ★ There will be two long screws and two short screws. The long screws come from the top of the device, and the short screws come from the bottom of the device.

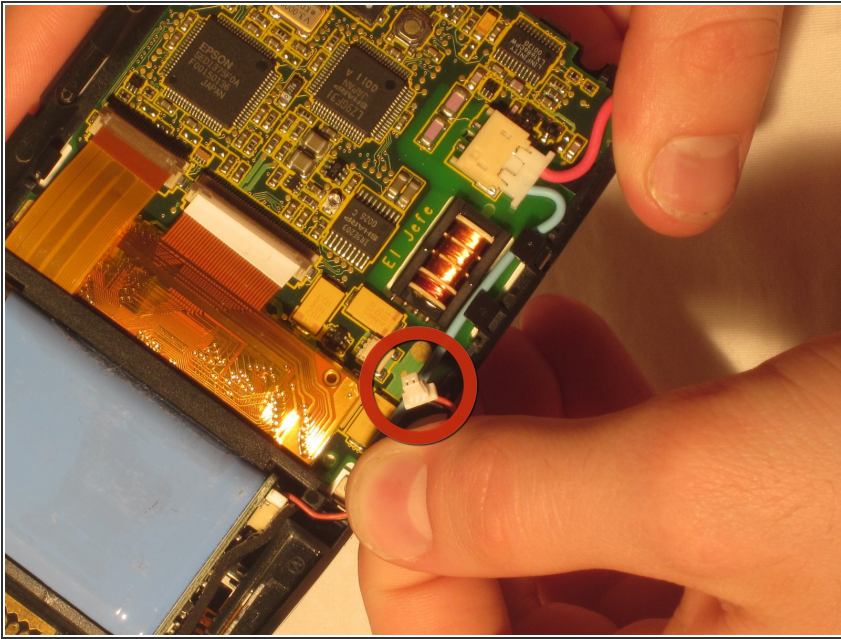
## Step 3 — Remove the Front and Back Covers



- Using a spudger, carefully pry open the front and back covers along the side seam.
- ⓘ A small sensor cover will fall out when the front and back covers are removed. Keep track of it.

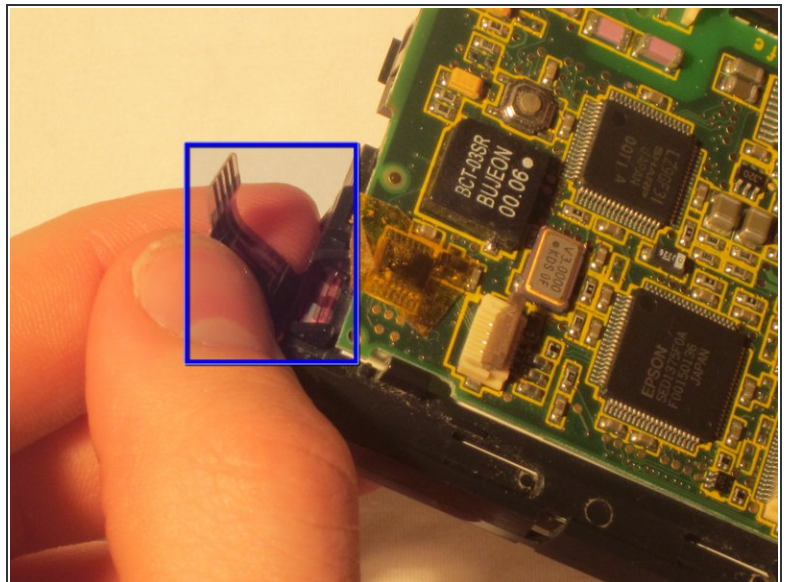
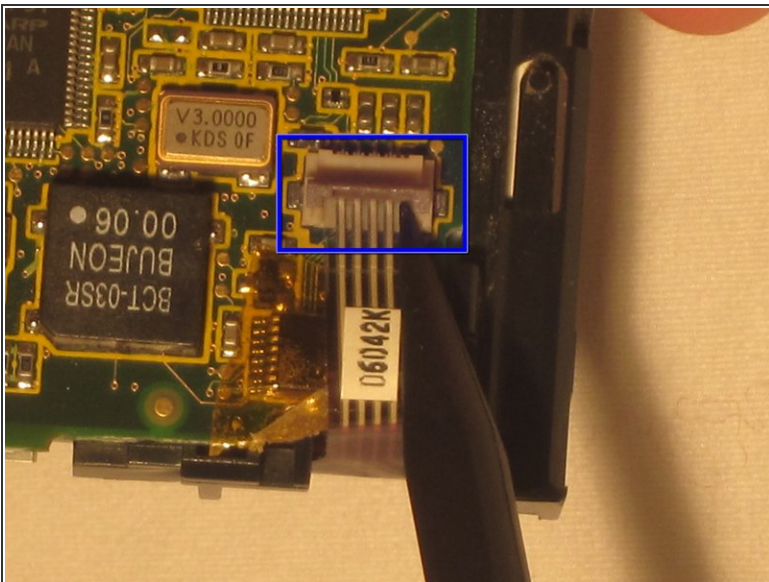


## Step 4 — Palm IIIc Teardown



- Unhook battery cable from the motherboard and remove the battery.

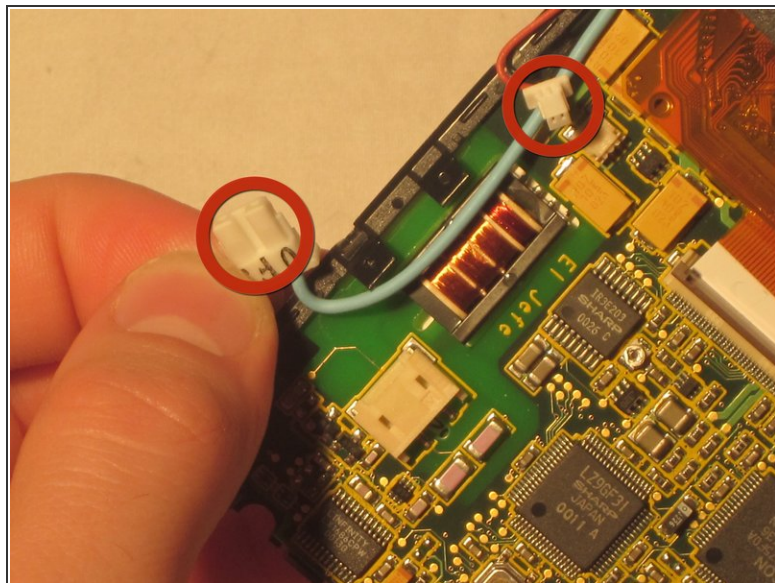
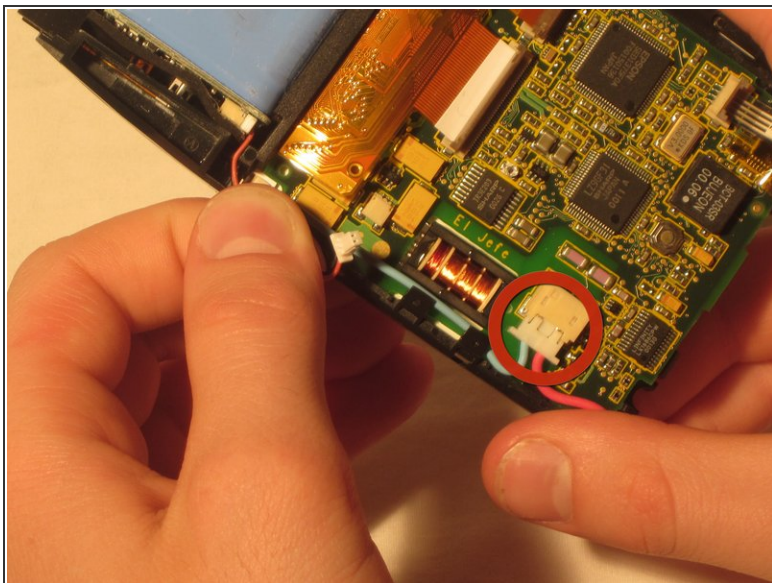
## Step 5



- Behind the motherboard remove the brown plastic clamp and remove the front screen cover.

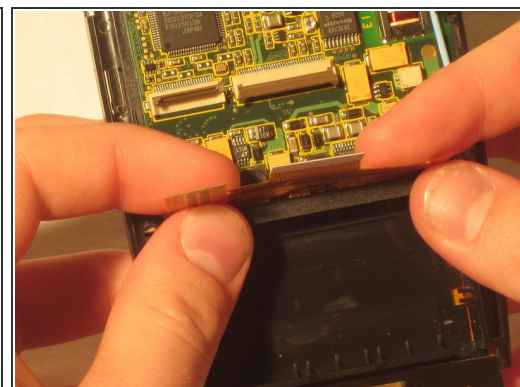
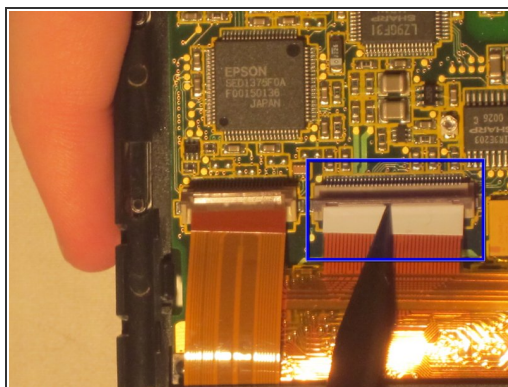
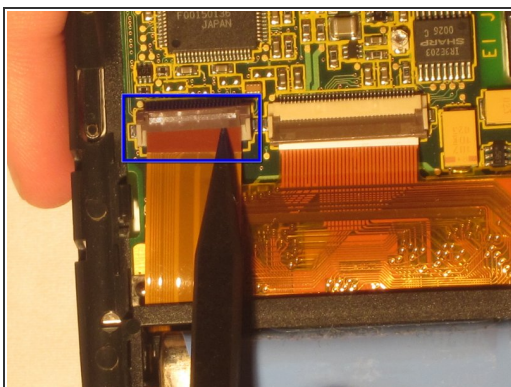


## Step 6



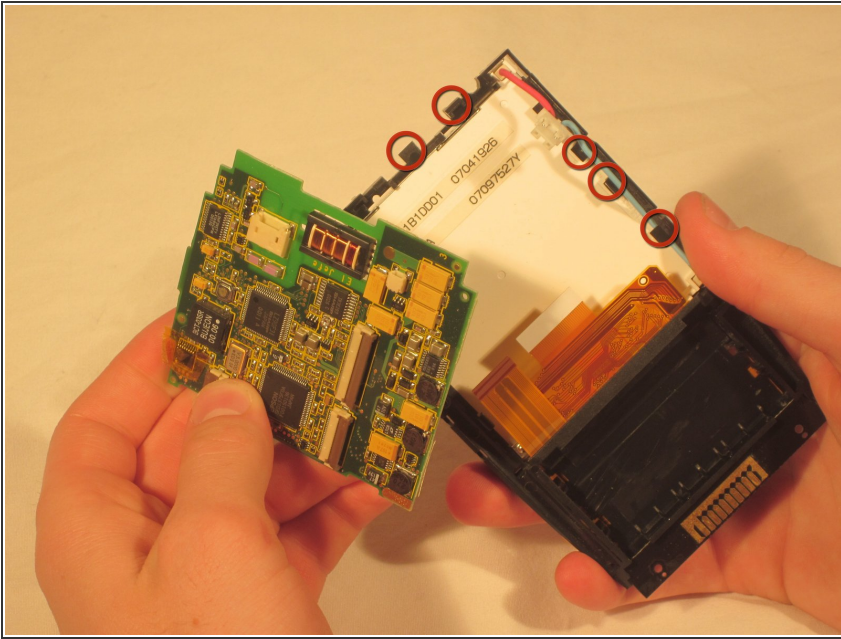
- Unhook the blue and red screen cables.

## Step 7



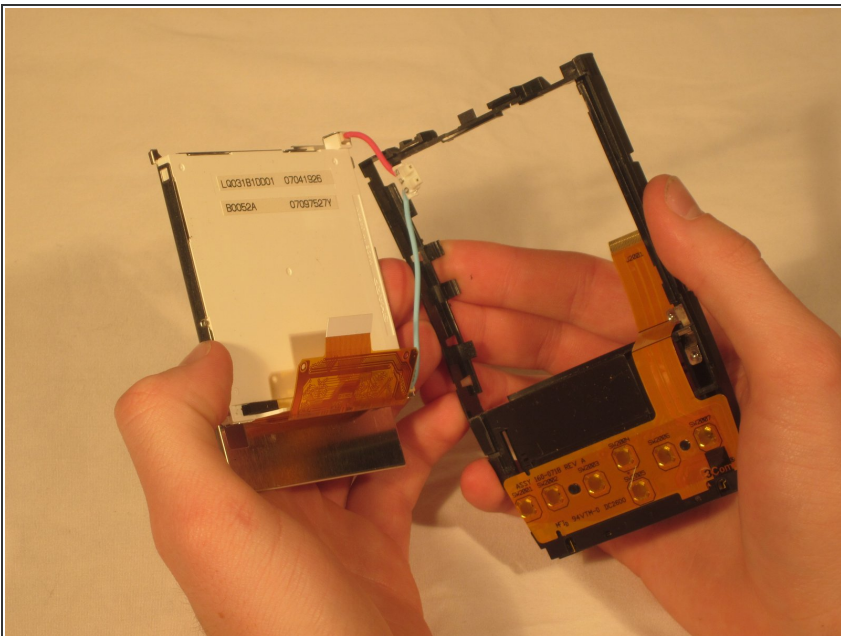
- Pop out the other two brown plastic clamps to release the screen and buttons.

## Step 8



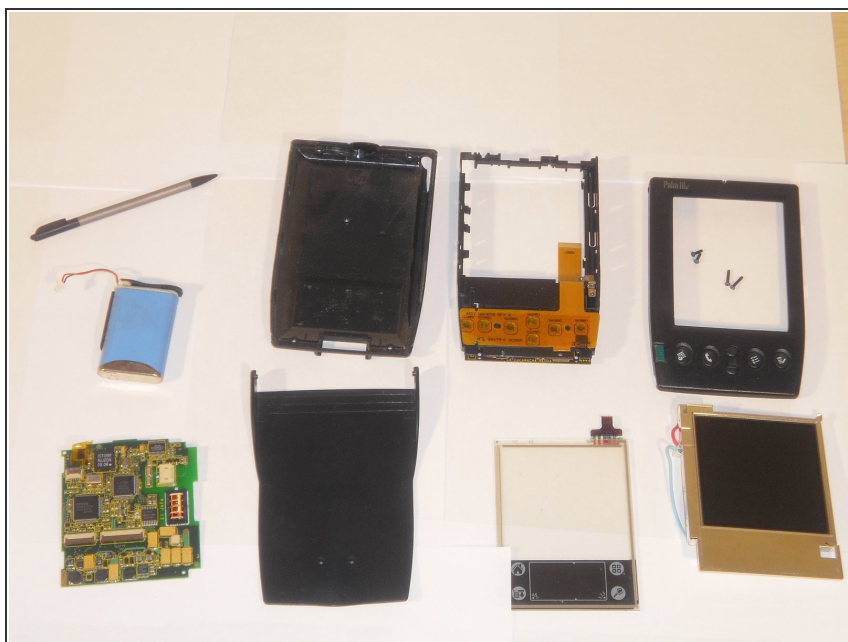
- The black clips on the edges of the device (see picture) must be unclipped to remove the motherboard.
- Carefully remove the motherboard from the device, pulling the motherboard away from the clips.

## Step 9



- Pull the screen out from the front.

## Step 10



- The object is now fully disassembled.

To reassemble your device, follow these instructions in reverse order.