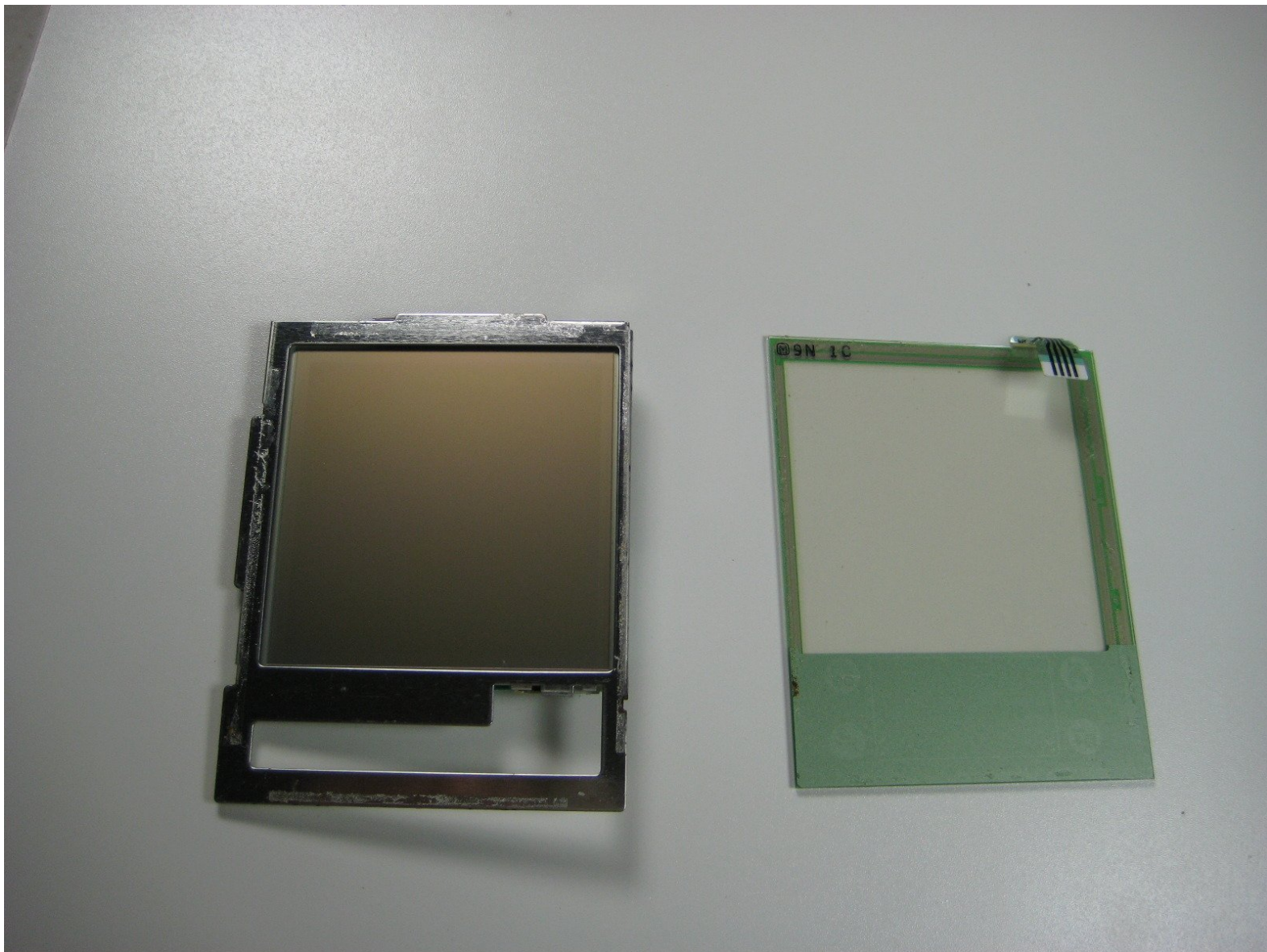




# Palm IIIx Touch Screen Replacement

Written By: David Haskell



# INTRODUCTION

A guide to replace a damaged or cracked screen.



## TOOLS:

- [Phillips #0 Screwdriver](#) (1)



## PARTS:

- [Palm IIIx Touch Screen](#) (1)

## Step 1 — Battery



- Place the Palm IIIx face down on a flat surface.

## Step 2



- Push down and lift up the battery cover to remove it.



### Step 3



- Remove the old batteries one at a time.

### Step 4 — Touch Screen



- Using a Phillips #00 screwdriver, remove the four screws that hold the back cover in place.

## Step 5



- Hold the device on its side, positioning your hands as shown.
- Remove the back cover by pushing in with your thumbs and pulling outward with the rest of your fingers.

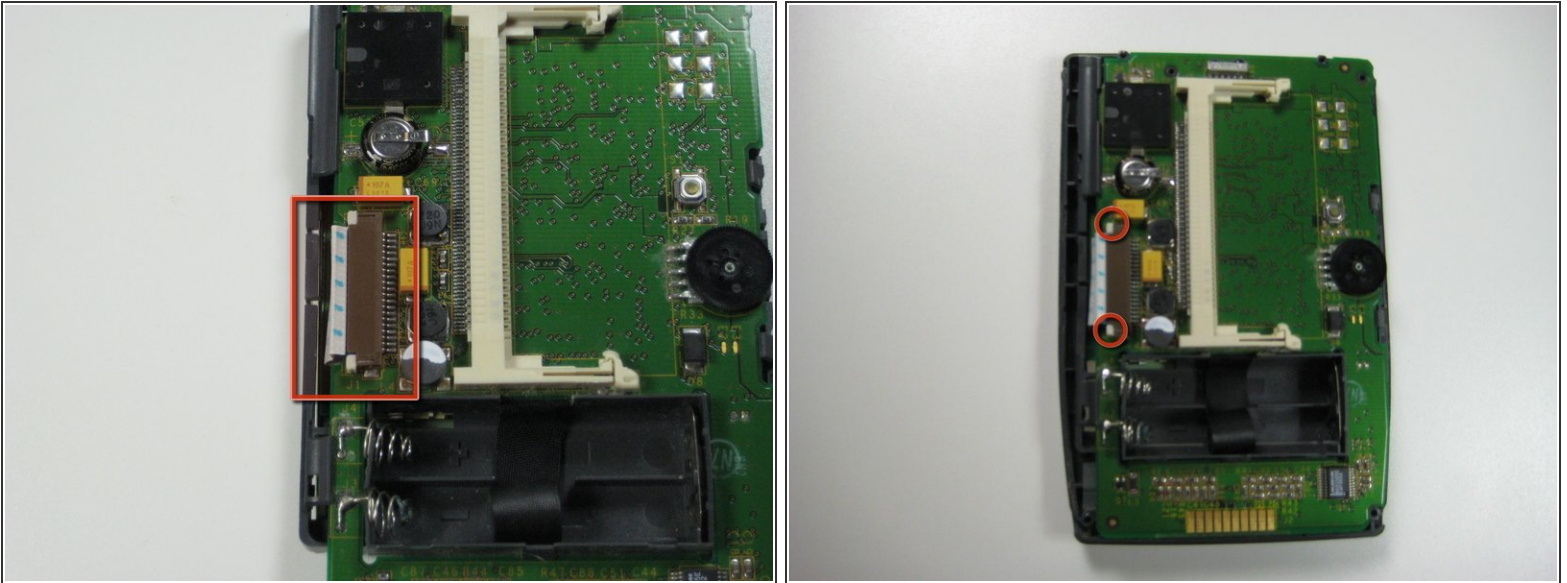
## Step 6



- Hold the screen and front cover on its side, facing the screen inward as shown.
- Position your hands so that you can push the screen outward with your thumbs.
- Remove the screen by pushing outward with your thumbs. Use your index fingers to hold the front cover in place.

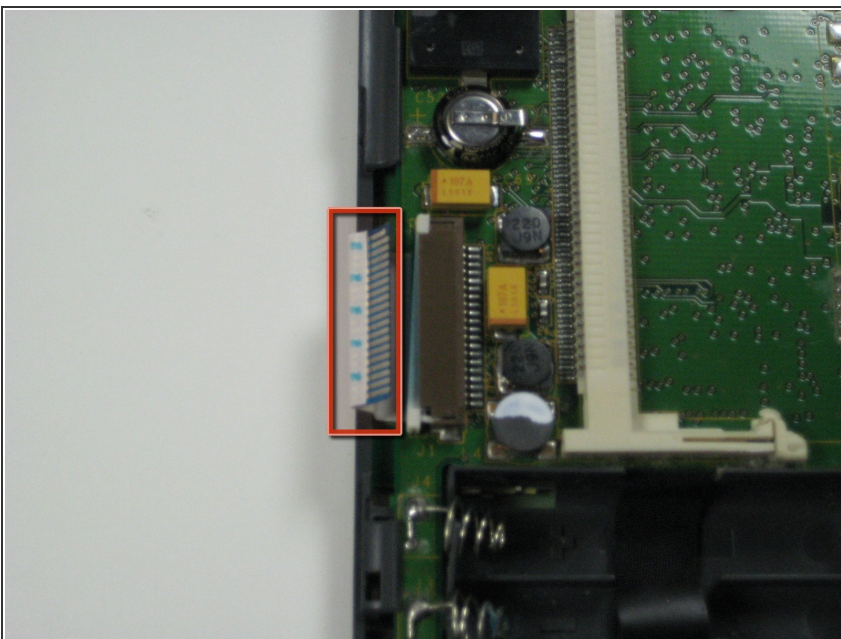


## Step 7



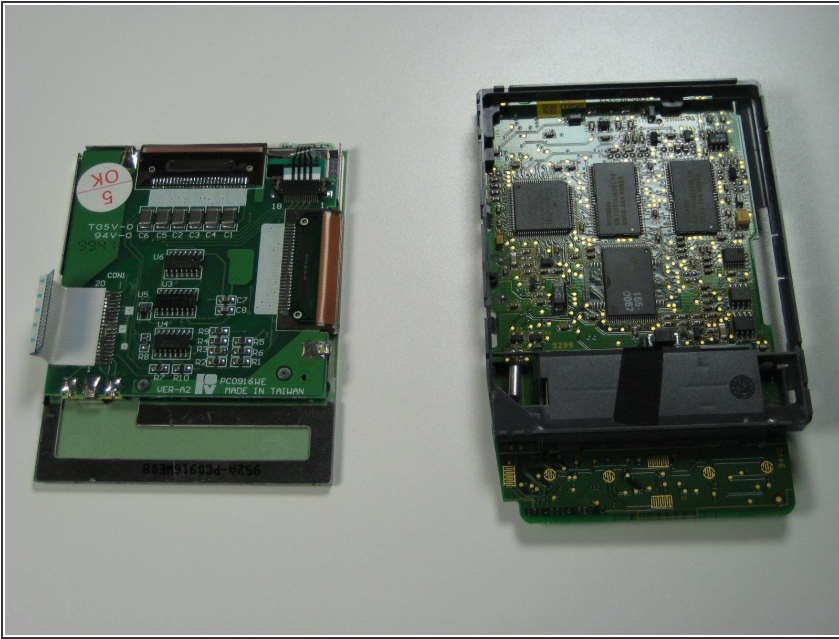
- Position the device with the screen facing down.
- Locate the white ribbon wire on the left hand side of the device.
- On either side of the ribbon wire are two white clasps. Gently push the two clasps away from the board (to the left).

## Step 8



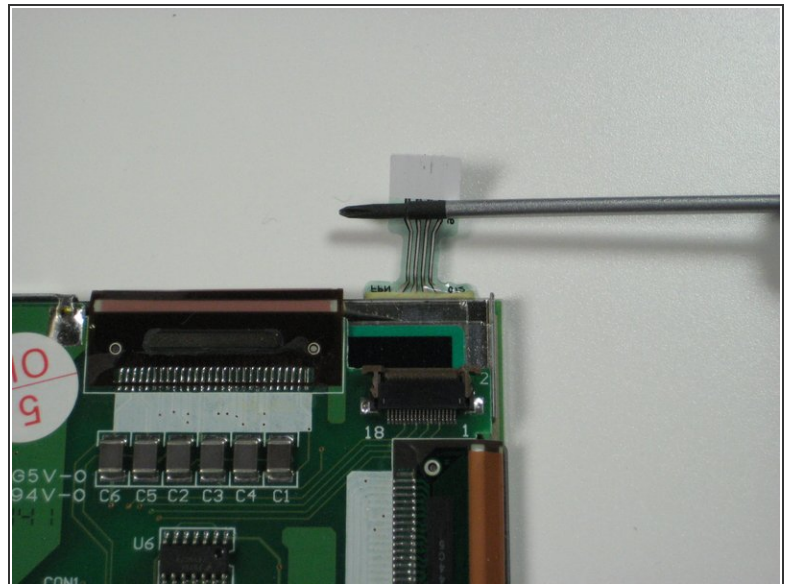
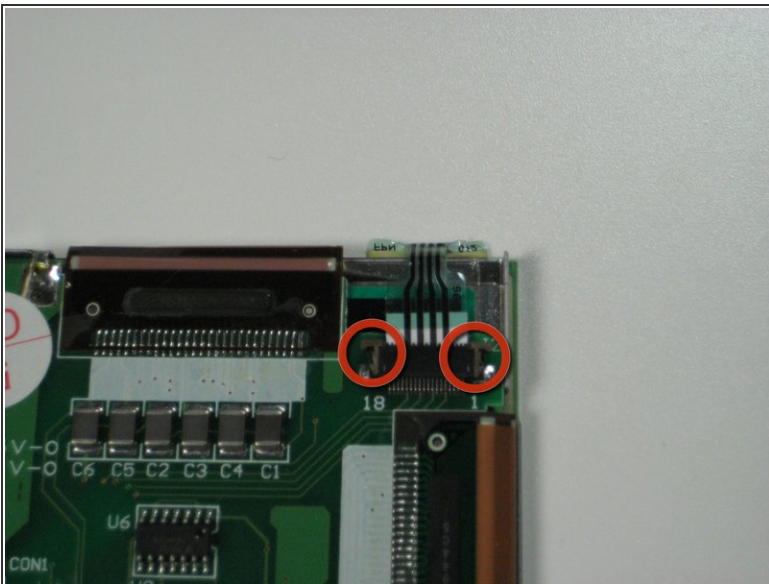
- Detach the ribbon wire by gently pulling it out of its connector.

## Step 9



- Separate the motherboard from the screen.

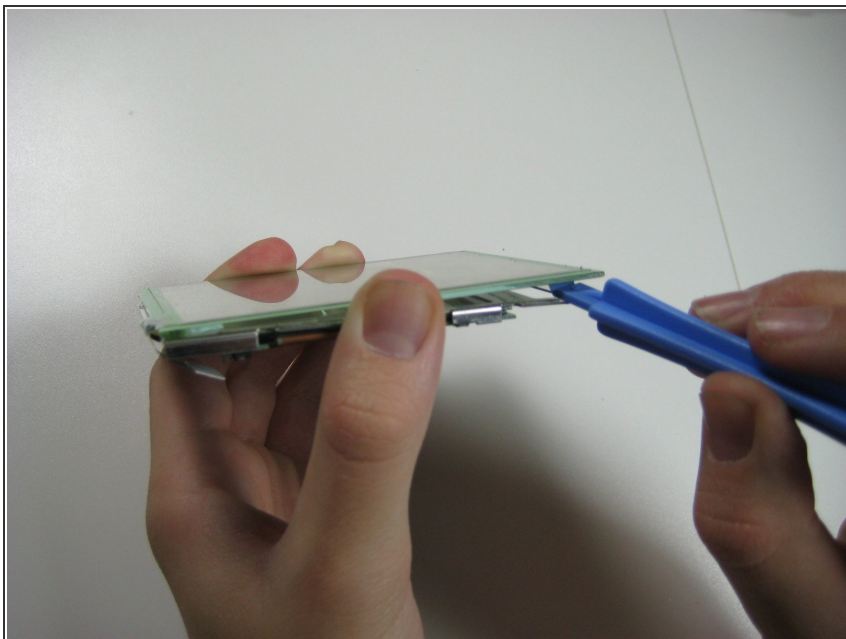
## Step 10



- On the back of the screen near the top right corner is a plastic filament:
  - Gently lift up on the two brown clasps on either side of the filament connector as shown.
- Using a thin, blunt object (a toothpick works well), slide it under the plastic filament and lift up to detach the filament from its connector.



## Step 11



- Insert a spudger tool between the metal backing and the glass cover piece, as shown.
- Run the spudger along the edge of the screen until the screen is lifted and can be removed.
- Replace or clean as needed.

To reassemble your device, follow these instructions in reverse order.