



Palm P101UNA Charger Outlet Replacement

The charger Outlet can become bent from over use following these steps will allow you to readjust it.

Written By: ironwill13791





TOOLS:

- [Phillips #0 Screwdriver](#) (1)
 - [iFixit Opening Tools](#) (1)
-

Step 1 — Battery



- Push in the button at the bottom of the phone, and lift the back cap off.

Step 2



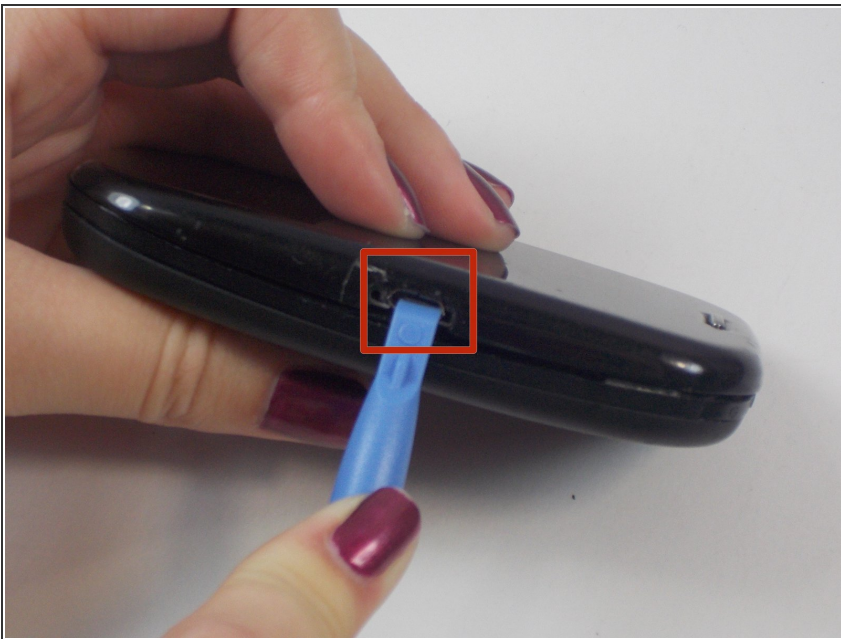
- ⚠ Remove the battery by pulling out the little tab.

Step 3 — Charger Outlet



- Turn phone over on its left side and remove single phillip's head screw using the Phillips #0 screwdriver.

Step 4



- After screw is removed take the plastic opening tool and apply slight pressure to even out bends in the metal

Step 5



- Insert charger to check adjustments to metal outlet

To reassemble your device, follow these instructions in reverse order.