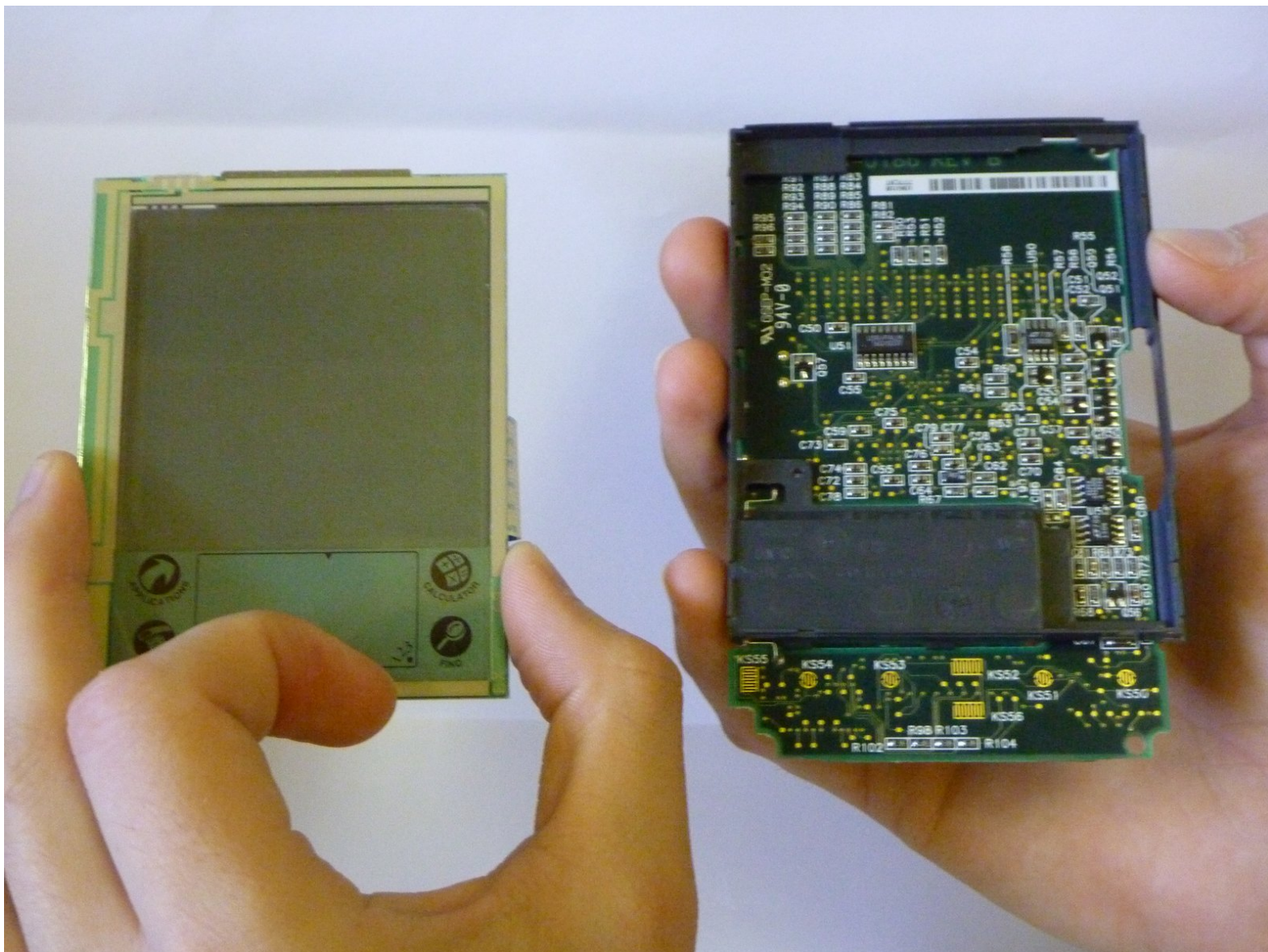




# Palm Pilot Professional 3com LCD Screen Replacement

Installing a new LCD screen for the Palm Pilot in case of a cracked or malfunctioning one.

Written By: Kevin Santos



---

## INTRODUCTION

Be careful with the screen if cracked, it may have sharp pieces.



### TOOLS:

- [Tweezers](#) (1)
  - [Phillips #00 Screwdriver](#) (1)
-



## Step 1 — Keypad



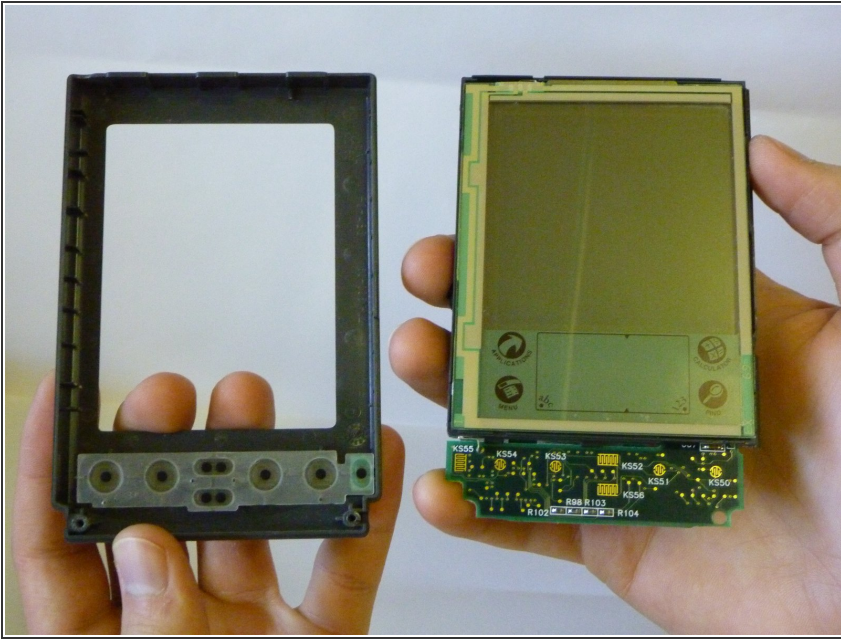
- Unscrew the three screws on the back of the Palm Pilot.

## Step 2



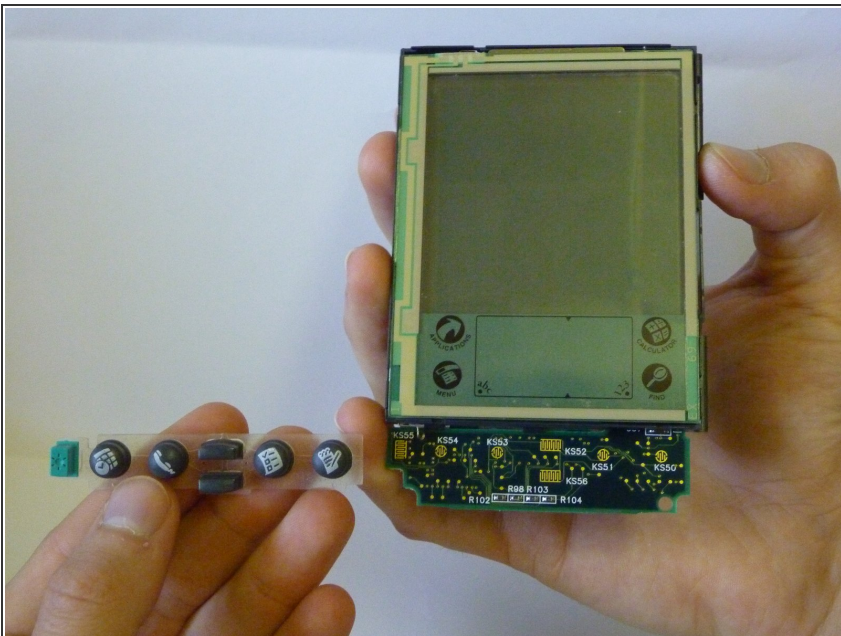
- Pull the back cover from the bottom of the device and separate the interlocking tabs on the top to remove the back cover.

### Step 3



- The front plastic cover is now free to be removed from the rest of the device.

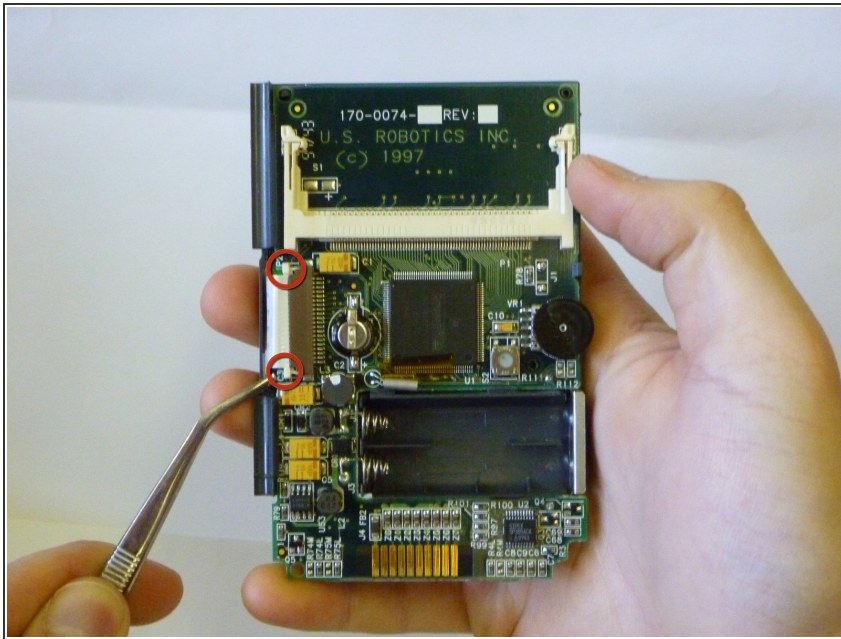
### Step 4



- The keypad is now free to be removed from the rest of the device.



## Step 5 — LCD Screen



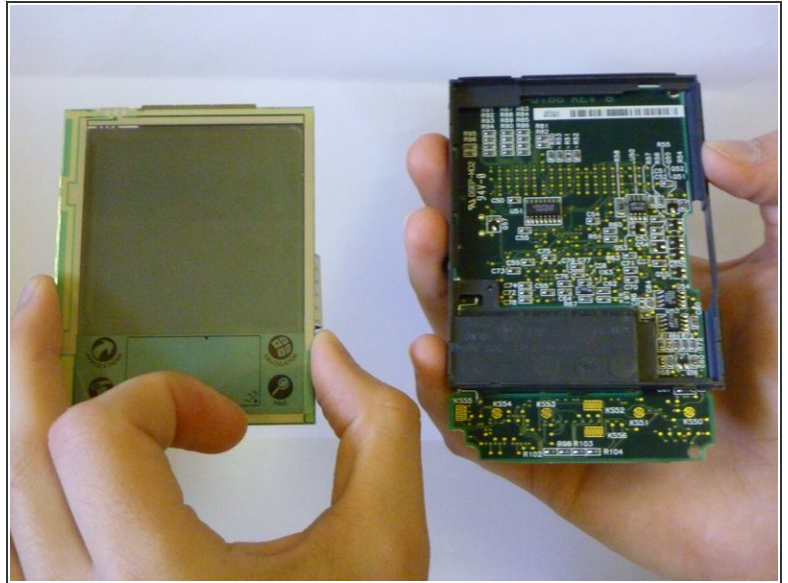
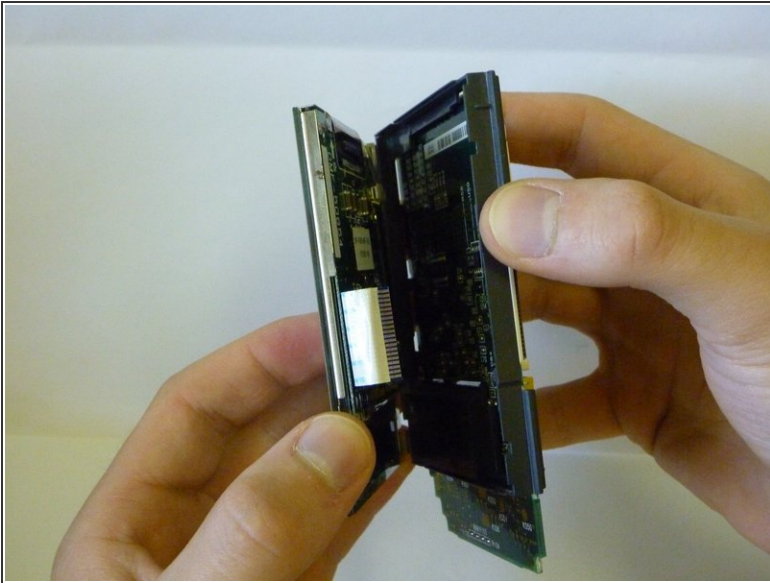
- Looking at the back of the device hold one of the white tabs on the ribbon cable connector down and use tweezers to push in the other white tab toward the device at the same time.

## Step 6



- The ribbon cable is now loose. Use the tweezers to carefully slide the ribbon cable out of the connector.

## Step 7



- The screen is now disconnected from the rest of the device and can now be removed.

To reassemble your device, follow these instructions in reverse order.