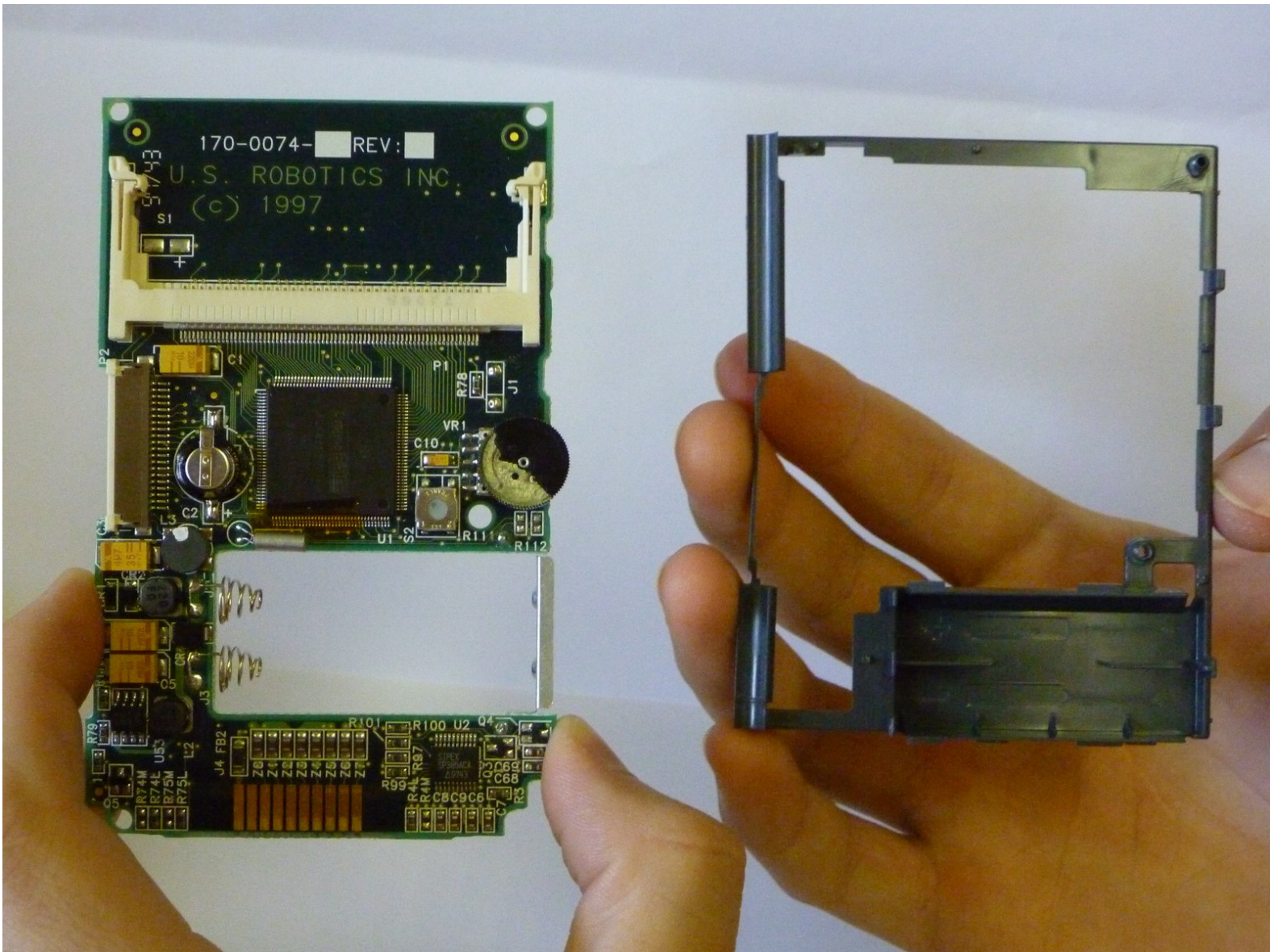




# Palm Pilot Professional 3com Plastic Frame Replacement

Use this guide to separate the logic board from the plastic frame surrounding it in order to replace either of them.

Written By: Kevin Santos





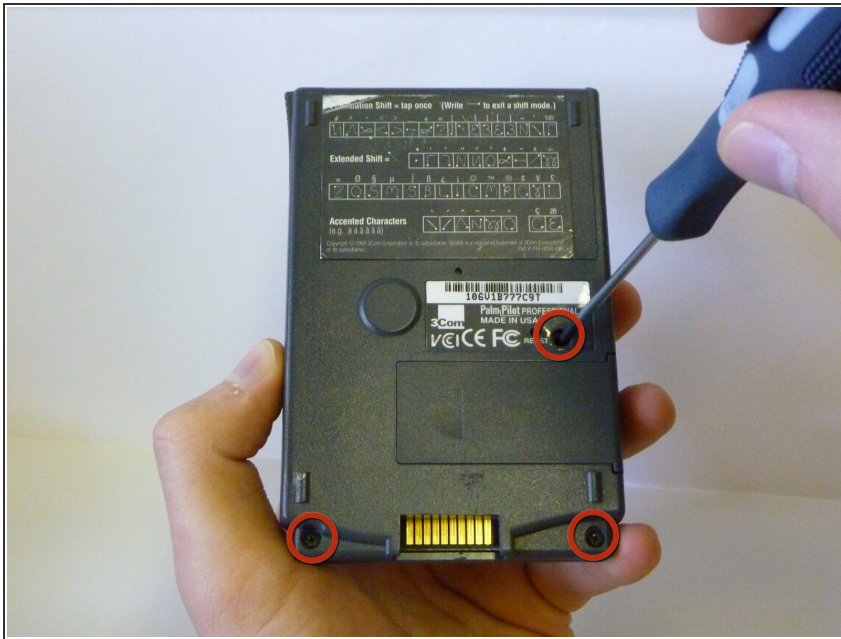


## TOOLS:

- [Phillips #00 Screwdriver](#) (1)
  - [Tweezers](#) (1)
-



## Step 1 — Keypad



- Unscrew the three screws on the back of the Palm Pilot.

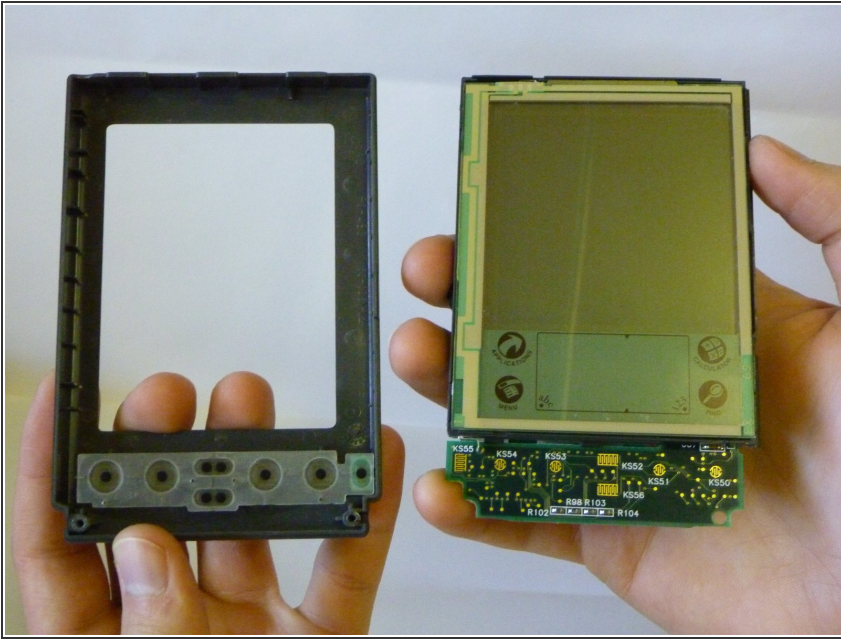
## Step 2



- Pull the back cover from the bottom of the device and separate the interlocking tabs on the top to remove the back cover.

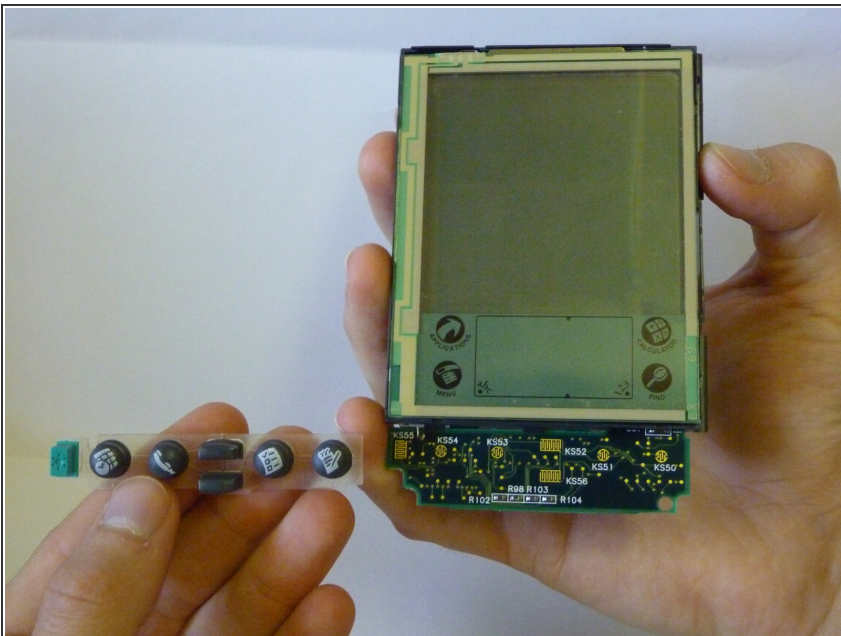


### Step 3



- The front plastic cover is now free to be removed from the rest of the device.

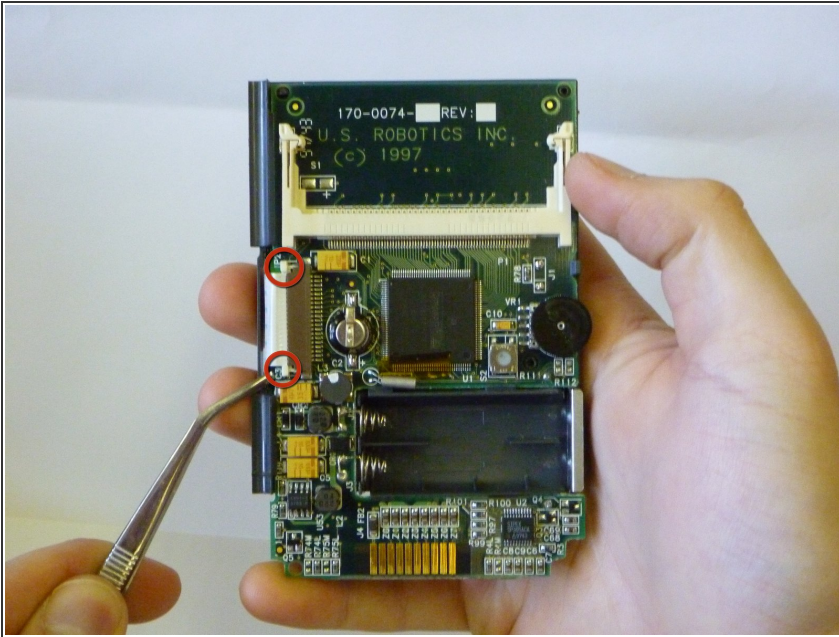
### Step 4



- The keypad is now free to be removed from the rest of the device.



## Step 5 — LCD Screen



- Looking at the back of the device hold one of the white tabs on the ribbon cable connector down and use tweezers to push in the other white tab toward the device at the same time.

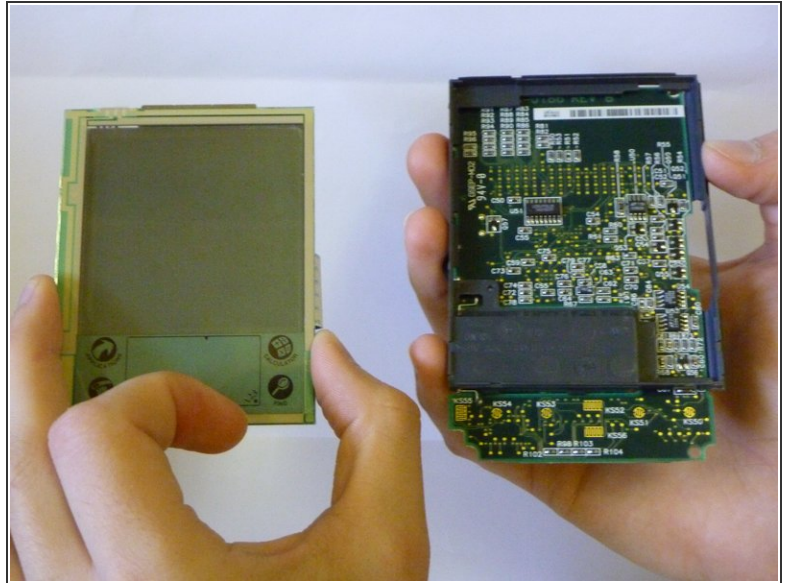
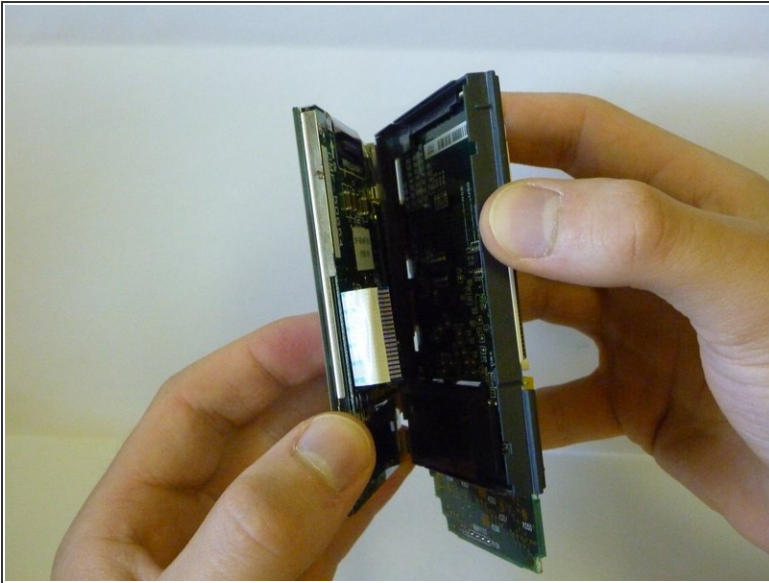
## Step 6



- The ribbon cable is now loose. Use the tweezers to carefully slide the ribbon cable out of the connector.

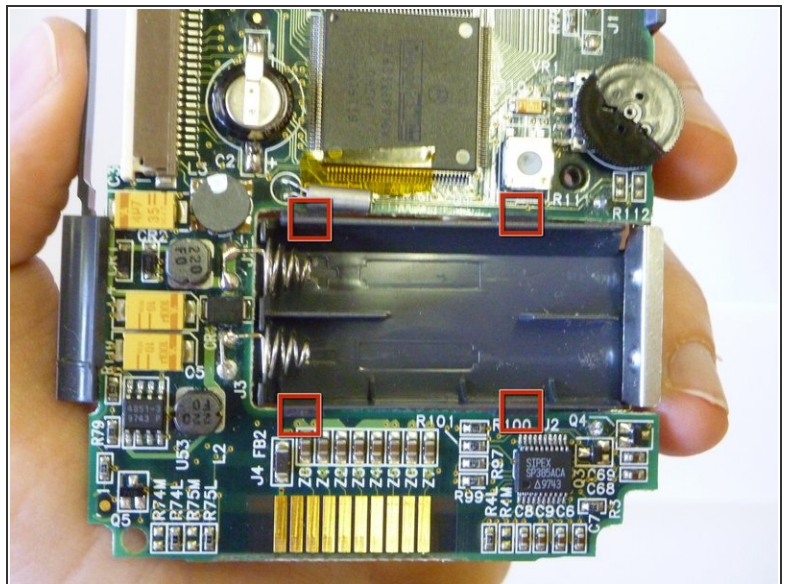


## Step 7



- The screen is now disconnected from the rest of the device and can now be removed.

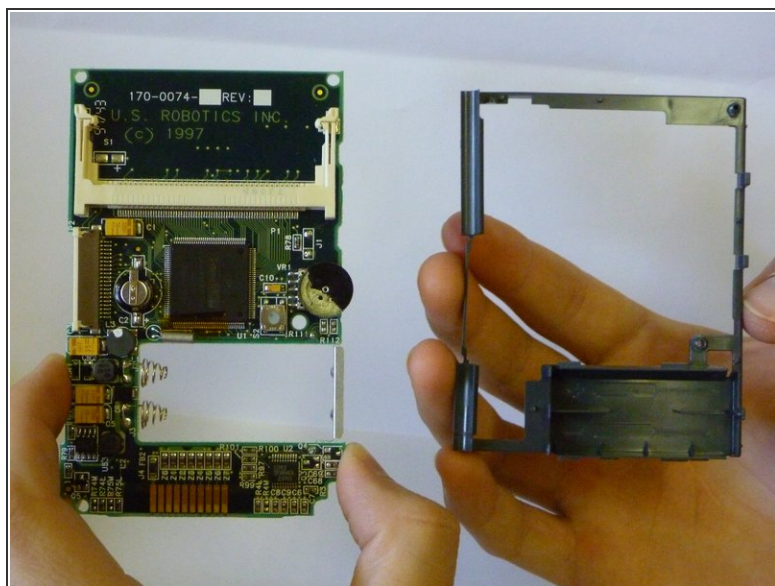
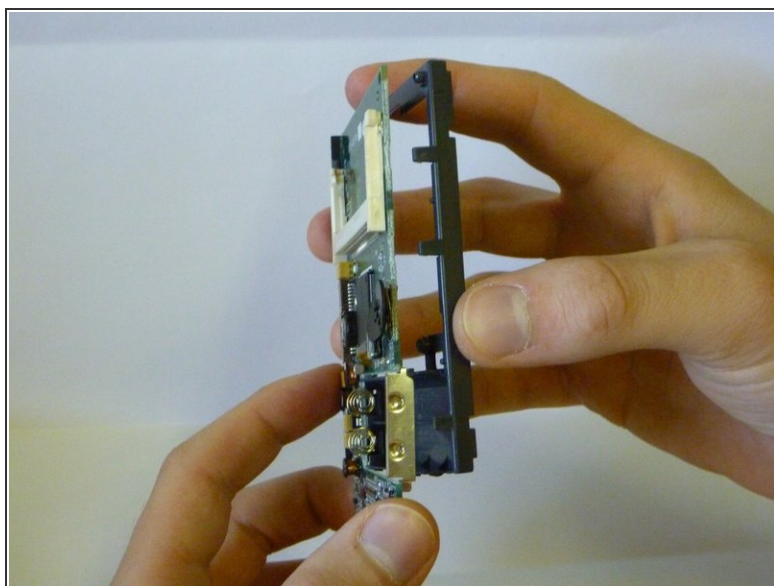
## Step 8 — Plastic Frame



- Depress the tabs around the battery casing so that the battery casing can slide through the rectangular slot on the motherboard - opposite of the metal plate.



## Step 9



- Pull/push the battery casing through the rectangular opening. The mother board should now separate from the plastic frame.
- Note: The frame might have to be wiggled towards the left (when the springs are facing left) to become fully released.

To reassemble your device, follow these instructions in reverse order.