



# Palm Pre Antenna Replacement

Troubleshoot connectivity problems or completely replace the antenna.

Written By: iDeleted



---

## INTRODUCTION

If you are having trouble connecting to the internet or calling someone, there may be a problem with the connections between the antenna and the phone or a problem with the antenna itself. This guide can help with these problems.

---

### TOOLS:

- [Spudger](#) (1)
  - [T5 Torx Screwdriver](#) (1)
-

## Step 1 — Antenna



- First the back panel must be removed to reveal the battery.
- Remove the battery pack.

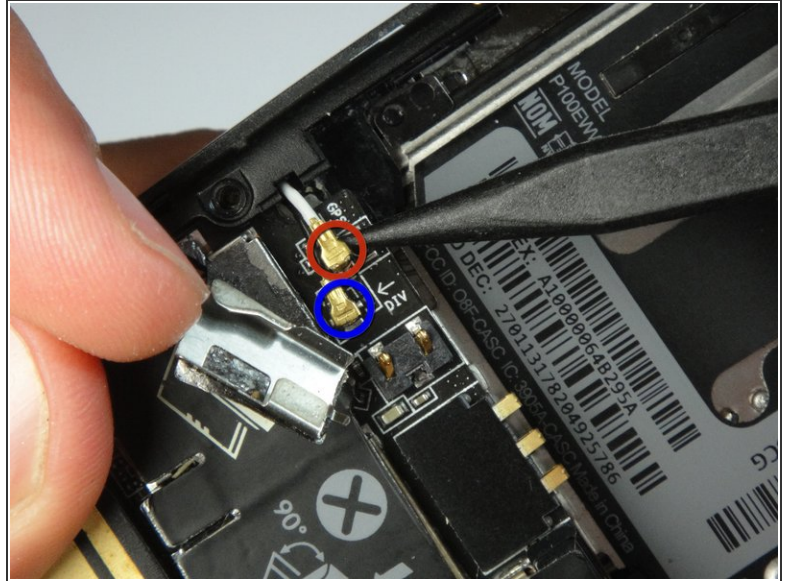
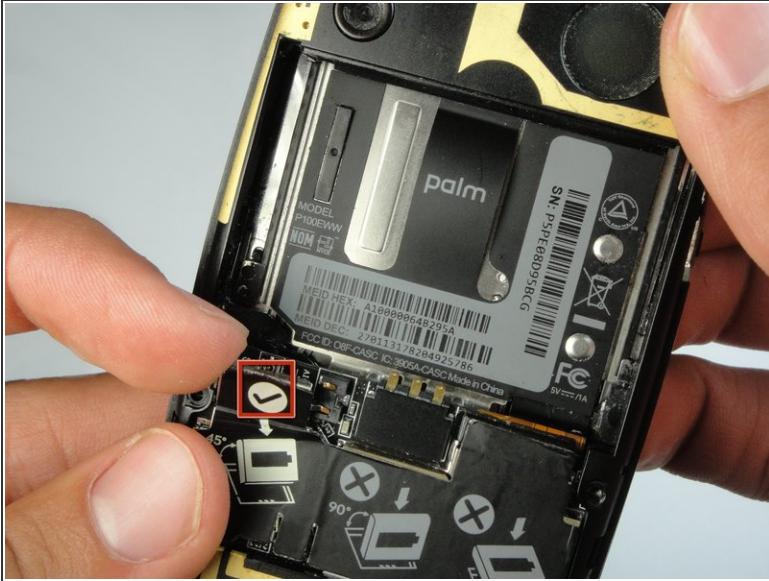
## Step 2



- Remove the six T5 screws necessary to separate the backplate from the phone.
- ⓘ There is one screw in the upper right that is concealed by a small sticker labeled "Palm."
- Additionally, there are interlocking tabs securing the back plate around the edges.
- Use the opening tool to carefully go around the phone releasing these tabs.



## Step 3



- Lift the metal flap marked in red to reveal the antenna connectors.
- Carefully pry these the antennas from their connections, this can be done quite easily.
- ⓘ Take note of which colored wire is attached to each connection. The white wire corresponds to GPS, while the black wire corresponds to DIV, or diversity antenna.

To reassemble your device, follow these instructions in reverse order.