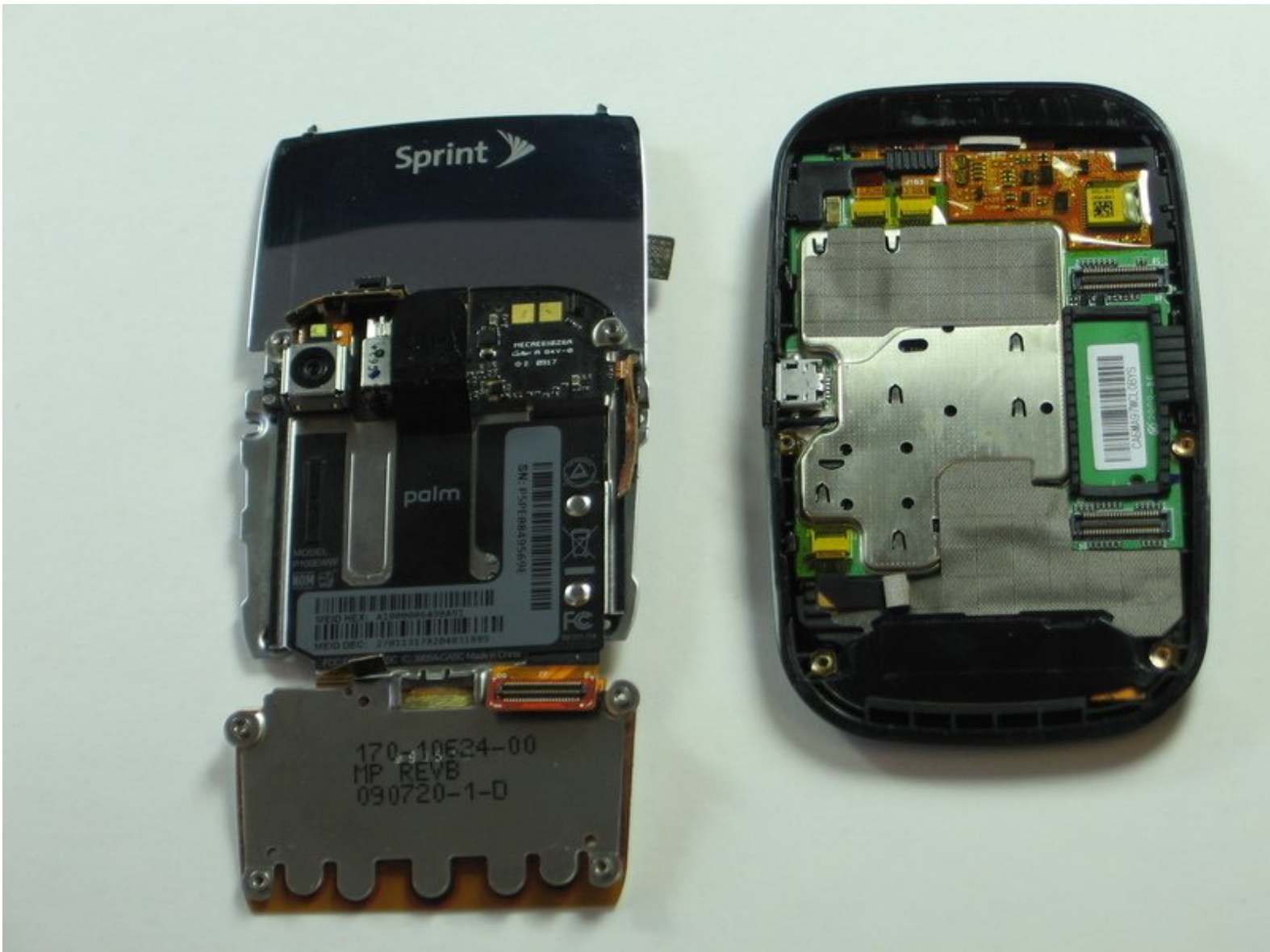




Palm Pre Motherboard Replacement

This guide will give you access to the motherboard of the phone located behind the touchscreen.

Written By: Michael Giglio





TOOLS:

- [Phillips #00 Screwdriver](#) (1)
 - [Tweezers](#) (1)
-

Step 1 — Battery



- Make sure your Palm Pre is turned off before disassembling the phone.
- Snap off the back panel to reveal the battery.

Step 2



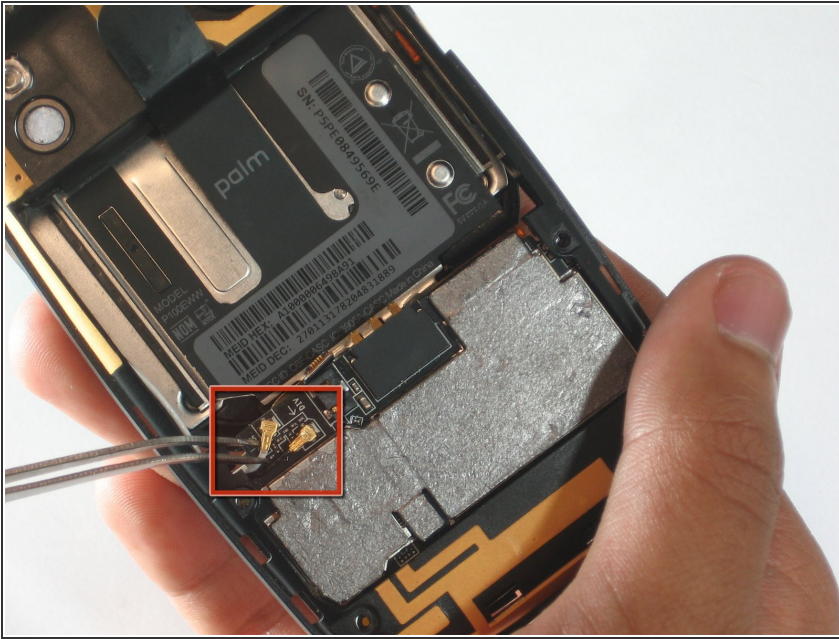
- Carefully pull up on the tab to remove the current battery.

Step 3 — Antenna



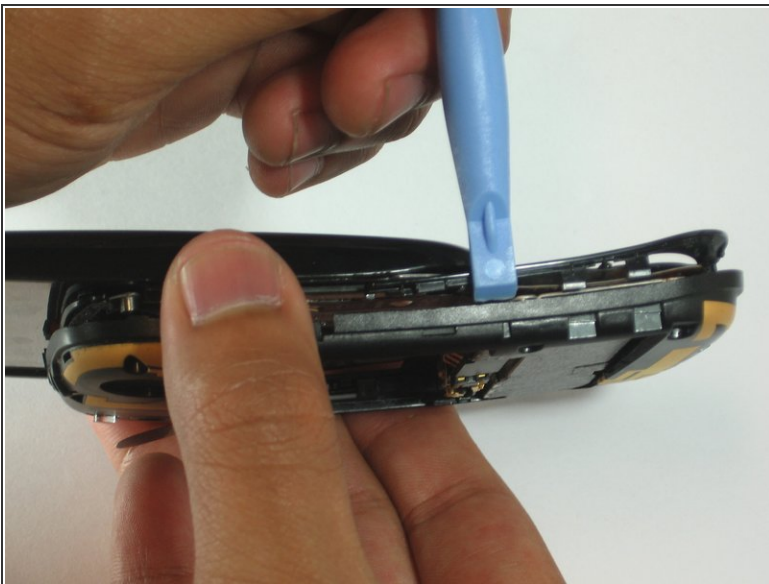
- Use the T5 Torx Screwdriver to remove the six screws holding the backing frame in place.

Step 4



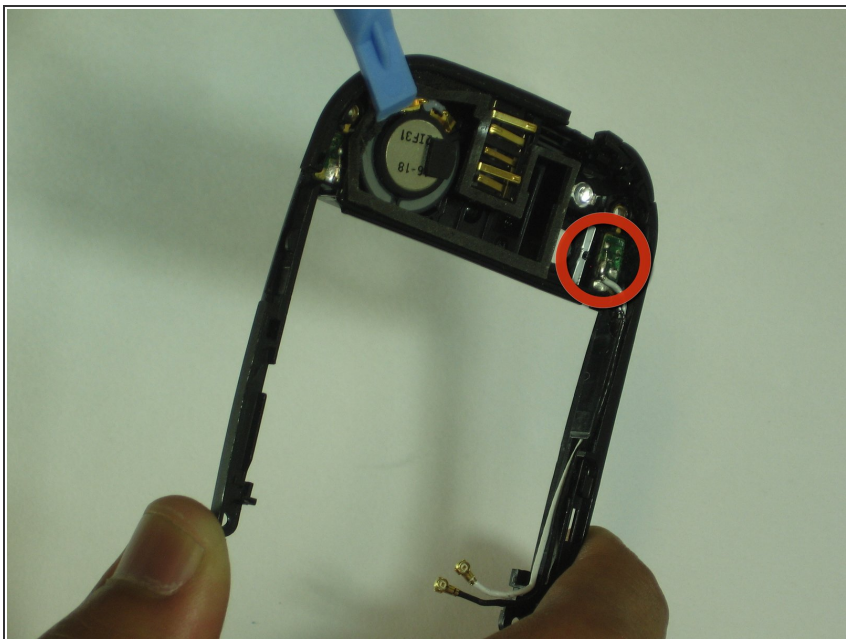
- Locate the hinge that covers the black and white GPS and DIV antennas. (The hinge will be located in the red box as portrayed in the picture.)
- Use a spudger to pry open the hinge.
- Use tweezers to disconnect the antennas from the keypad control board.

Step 5



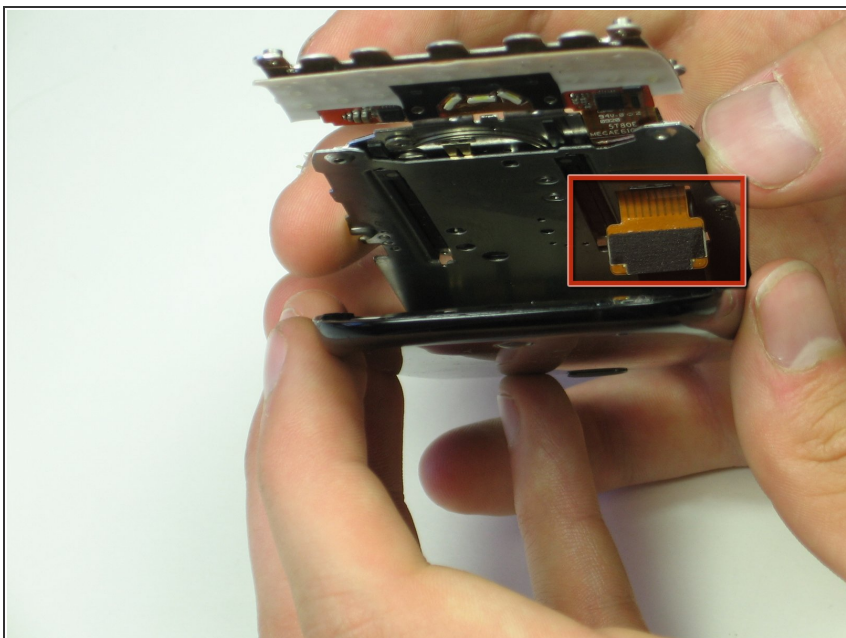
- Use a spudger to pry off the (black and yellow) back frame.
- ❗ Disregard the main part of the phone at this point and look only at the inside of the removed back frame. (You will need the main part of the phone for access to the keyboard and motherboard)

Step 6



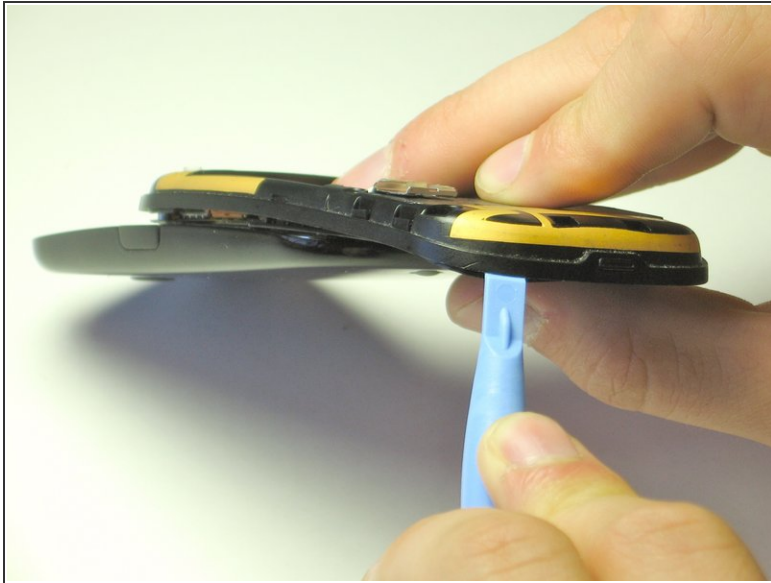
- Find the small circuit board at the top right and desolder the wires that are connected to it.
- ⓘ This step is only necessary for antenna removal.

Step 7 — Keypad Control Board



- Remove the two ribbon cable connectors using tweezers.

Step 8



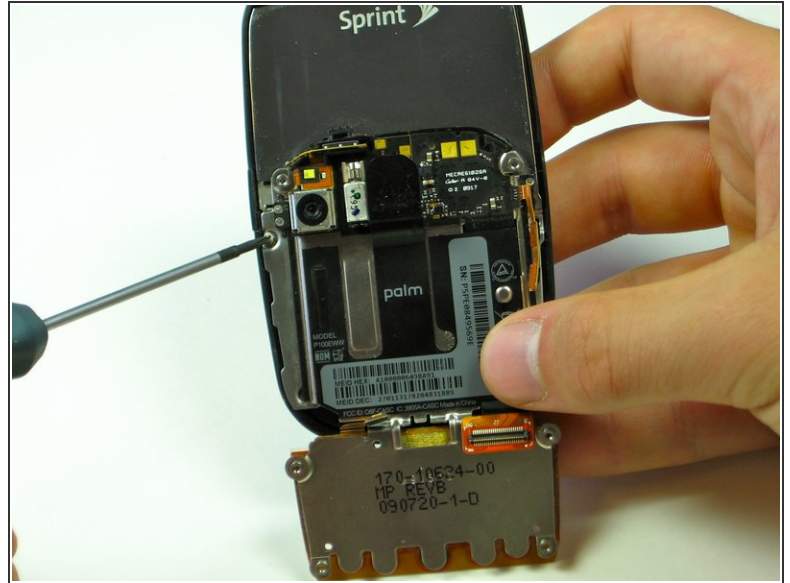
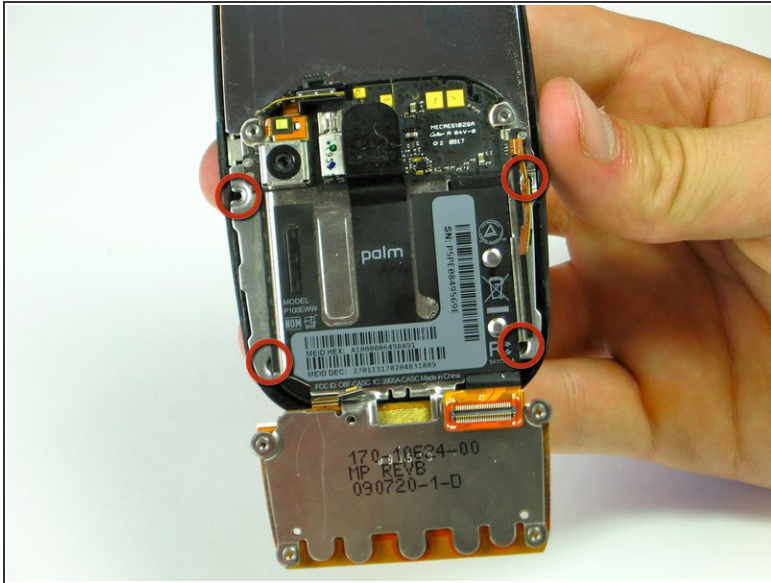
- Use a spudger to remove the keypad control board.
- ⓘ There is heavy adhesive connecting this part to the keypad sensors.

Step 9 — Keyboard



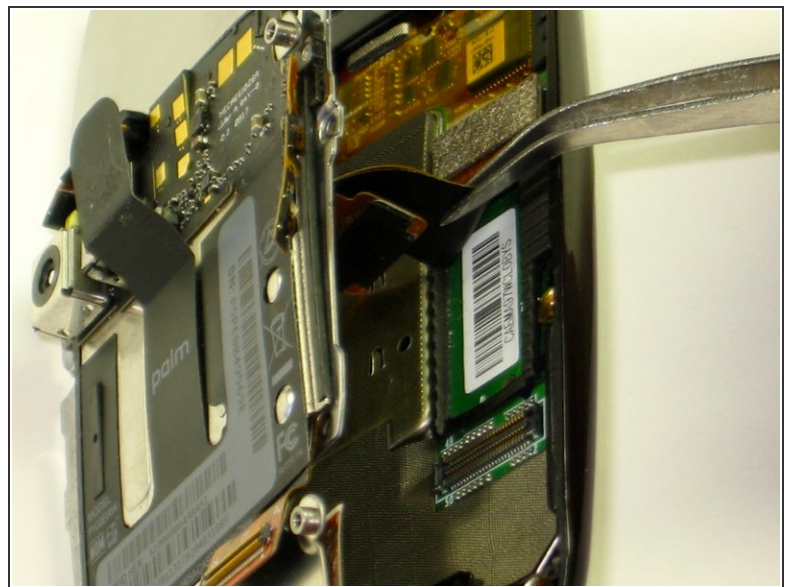
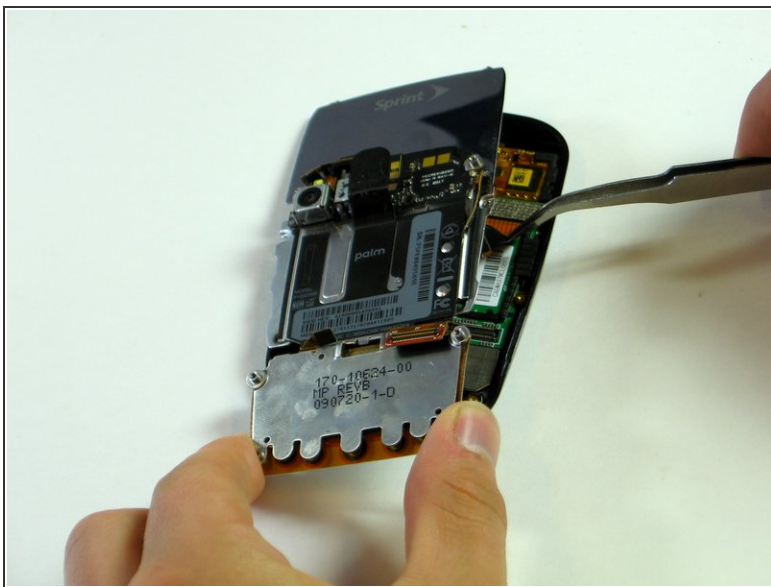
- Slide the keyboard away from the phone.
- ⓘ Use tweezers to separate the keyboard from the phone if adhesive is inhibiting removal.

Step 10 — Motherboard



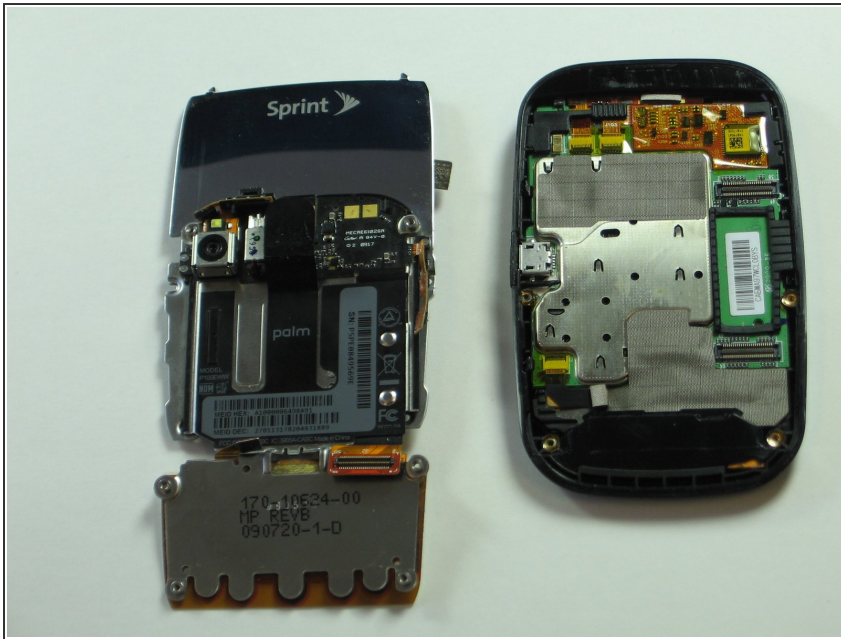
- Remove the four Phillips head screws using the #00 screw driver.
- ⓘ You might have to slide the keyboard up or down to access all four screws.

Step 11



- Lift up slightly on the backing plate.
- Do not tear the ribbon cables when removing the backing plate. Instead use tweezers to remove them.

Step 12



- Now you have access to the motherboard.

To reassemble your device, follow these instructions in reverse order.