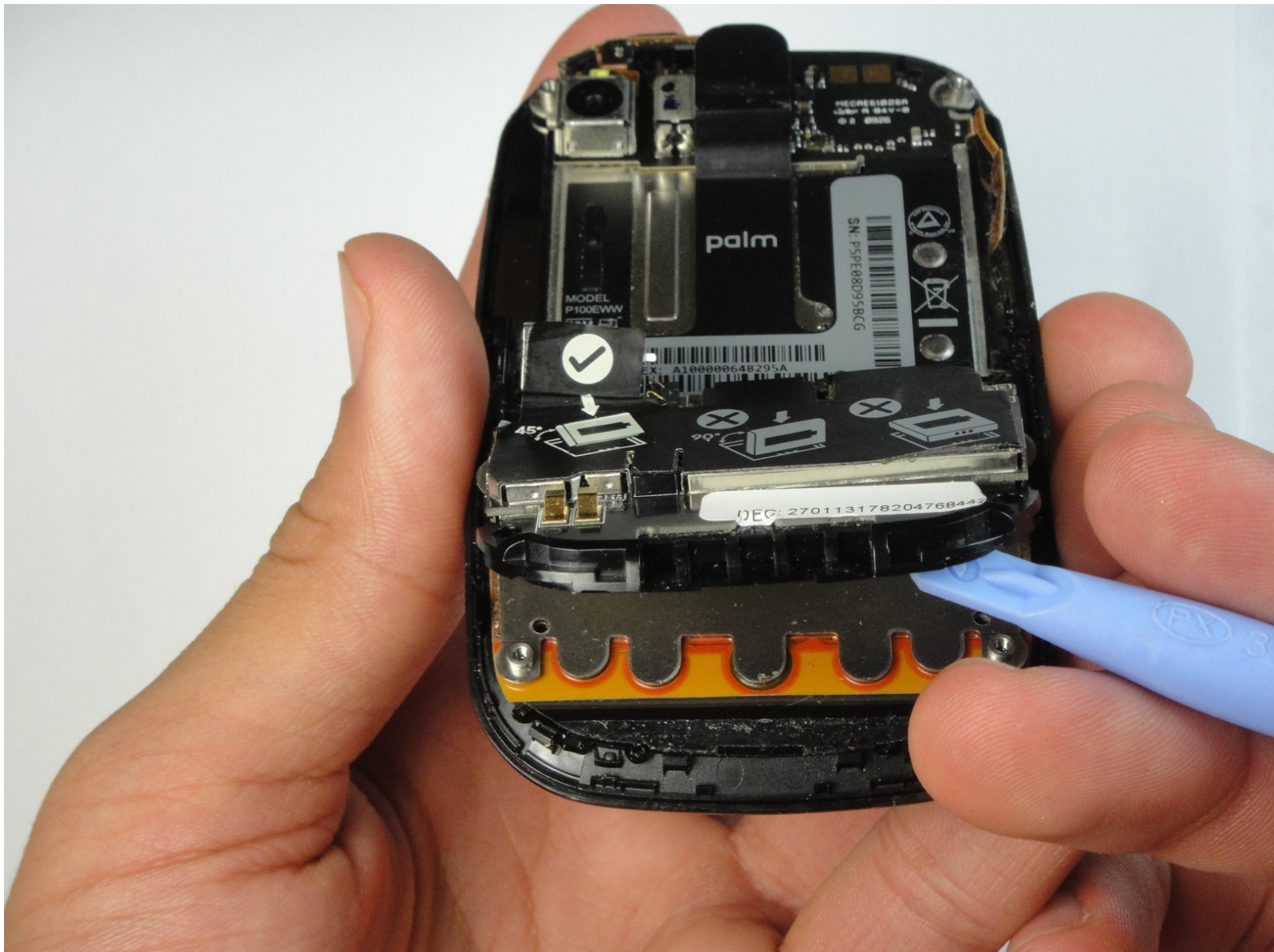




# Palm Pre PCB (Phone Circuit Board) Replacement

Troubleshooting and replacing the PCB (Phone Circuit Board).

Written By: iDeleted



---

## INTRODUCTION

If you are having trouble with keyboard responsiveness, general processing or problematic lag, then the PCB may be the cause which must be replaced if reconnecting it doesn't work.

---



### TOOLS:

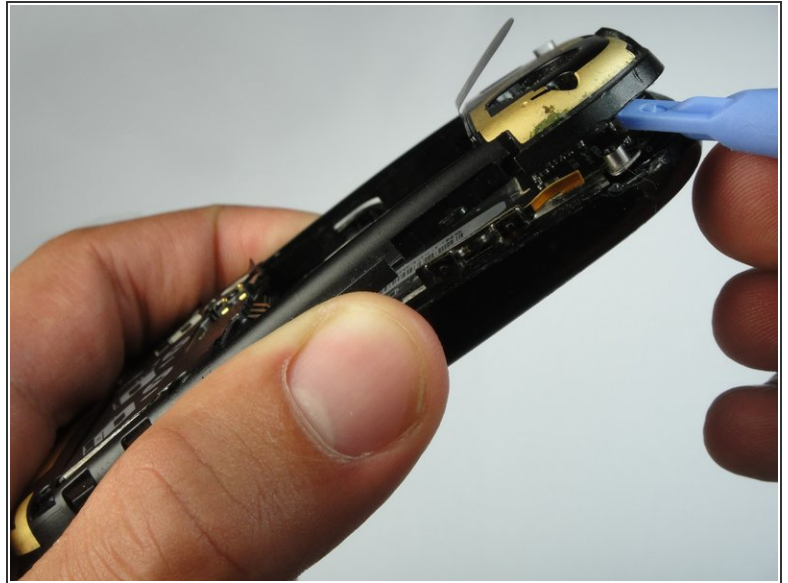
- [Spudger](#) (1)
  - [T5 Torx Screwdriver](#) (1)
-

## Step 1 — Antenna



- First the back panel must be removed to reveal the battery.
- Remove the battery pack.

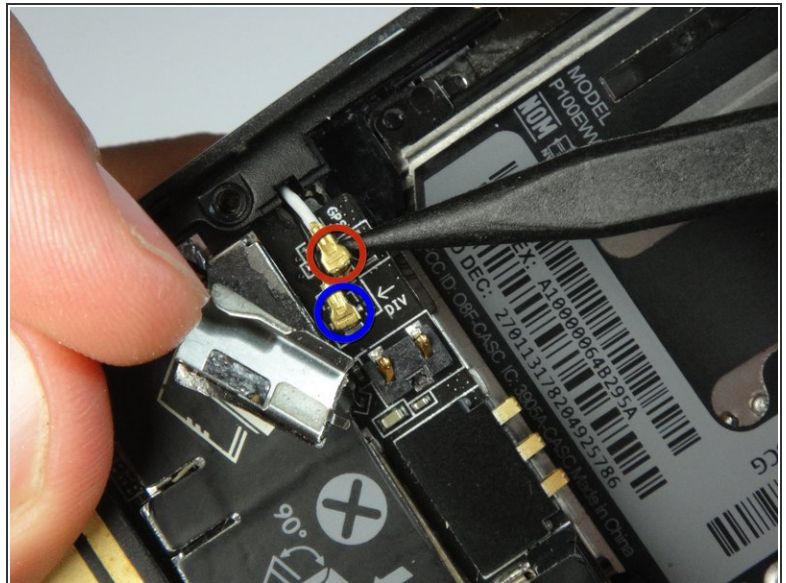
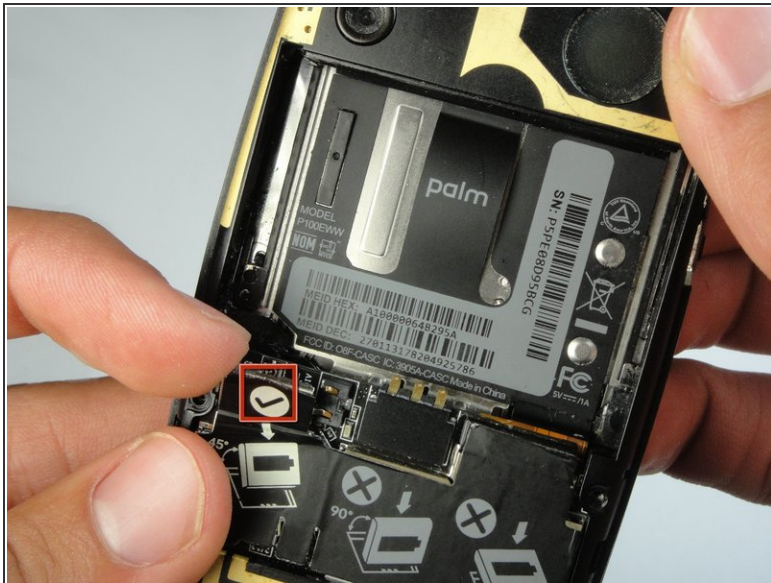
## Step 2



- Remove the six T5 screws necessary to separate the backplate from the phone.
- ⓘ There is one screw in the upper right that is concealed by a small sticker labeled "Palm."
- Additionally, there are interlocking tabs securing the back plate around the edges.
- Use the opening tool to carefully go around the phone releasing these tabs.

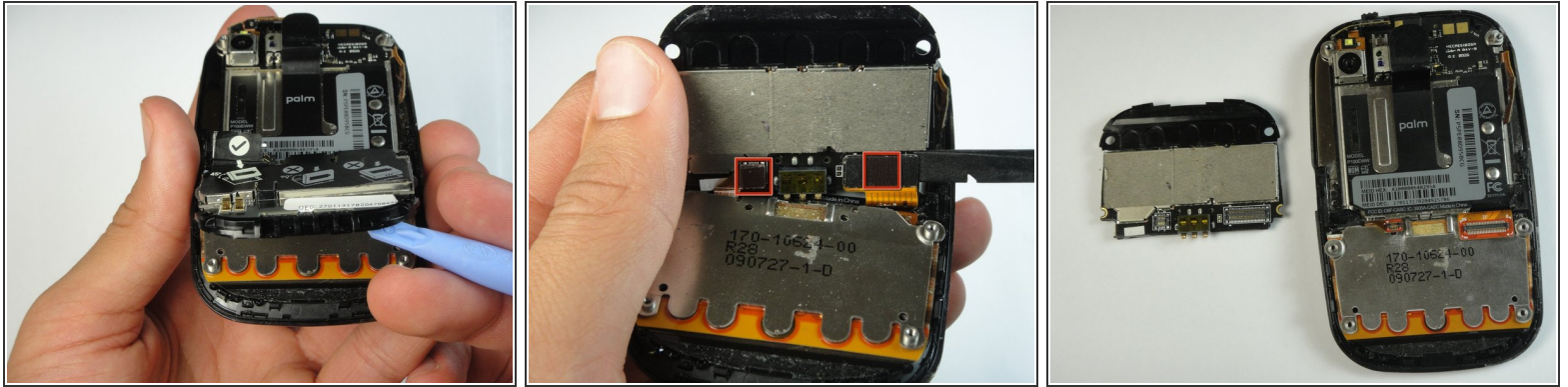


## Step 3



- Lift the metal flap marked in red to reveal the antenna connectors.
- Carefully pry these the antennas from their connections, this can be done quite easily.
- ⓘ Take note of which colored wire is attached to each connection. The white wire corresponds to GPS, while the black wire corresponds to DIV, or diversity antenna.

## Step 4 — PCB (Phone Circuit Board)



- With the backplate removed, we have easy access to the PCB.
- Two connectors must be disconnected so that we can remove the PCB.
- Gentle prying with the opening tool should easily separate the glued PCB from the rest of the phone.

To reassemble your device, follow these instructions in reverse order.