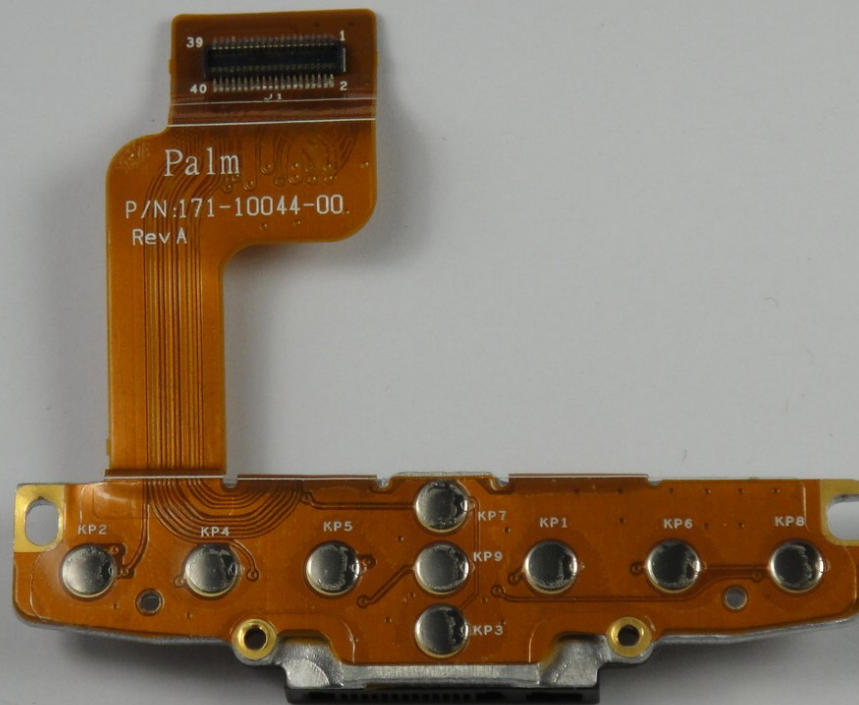




# Palm TX Buttons and Connector Assembly Replacement

Replace the buttons and connector assembly.

Written By: Spencer Lewson





## TOOLS:

- [iFixit Opening Tools](#) (1)
- [Soldering Iron](#) (1)
- [T5 Torx Screwdriver](#) (1)

## Step 1 — Back Panel



- Orient the device so that the display faces forward.
- Remove the stylus from the right side.

## Step 2



- Turn over the device so that the back panel faces forward.
- Use a T5 Torx screwdriver to remove the four 6.35mm corner screws.

### Step 3



- Rotate the device so that the display faces forward.
- Insert a plastic opening tool with the angled tip pointing downward into the crevice on the left side of the device.
- Pry along the crevice to loosen the back panel.
- Repeat this process for the right side.



## Step 4

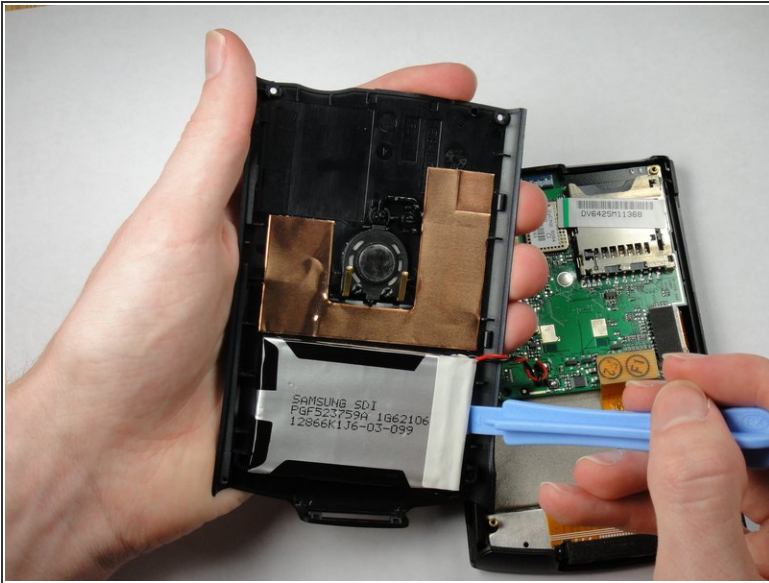


- Carefully pry the back panel to open the device.

⚠ Be careful not to break the wire that connects the battery pack to the motherboard.

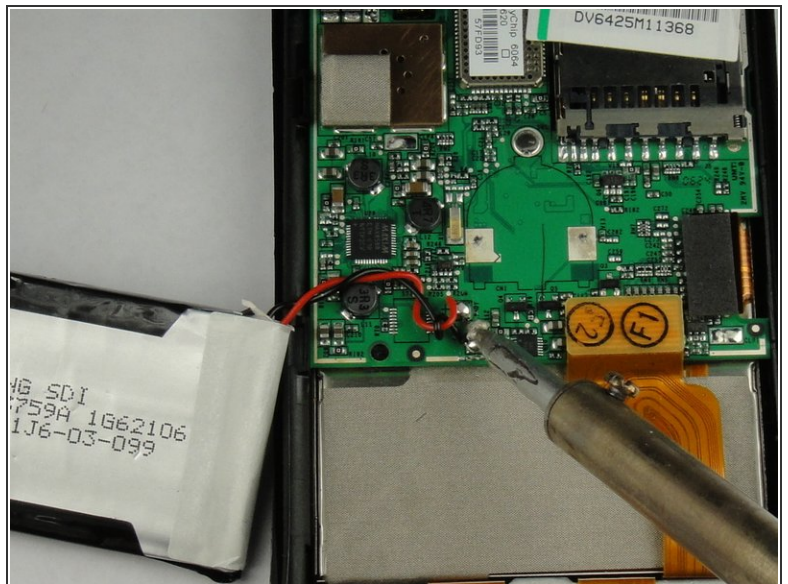
ℹ When reassembling, snap the back panel back into place and then insert the top cover.

## Step 5



- Use a plastic opening tool to peel the battery pack from the back panel.
- ⓘ The battery pack is glued to the back panel so removing it may require considerable effort.

## Step 6 — Battery Pack



- Use a soldering iron to disconnect the battery wires from the motherboard.
- For soldering instructions, you can view the [Soldering Guide](#).



## Step 7 — Motherboard



- Pull straight up on the ribbon cables located on the bottom right of the motherboard to disconnect them.

## Step 8



- Lift the mother board out of the device.
- ⓘ A weak adhesive attaches the motherboard to the device.
- ⓘ The red wire in the picture will not be attached to your device at this point.

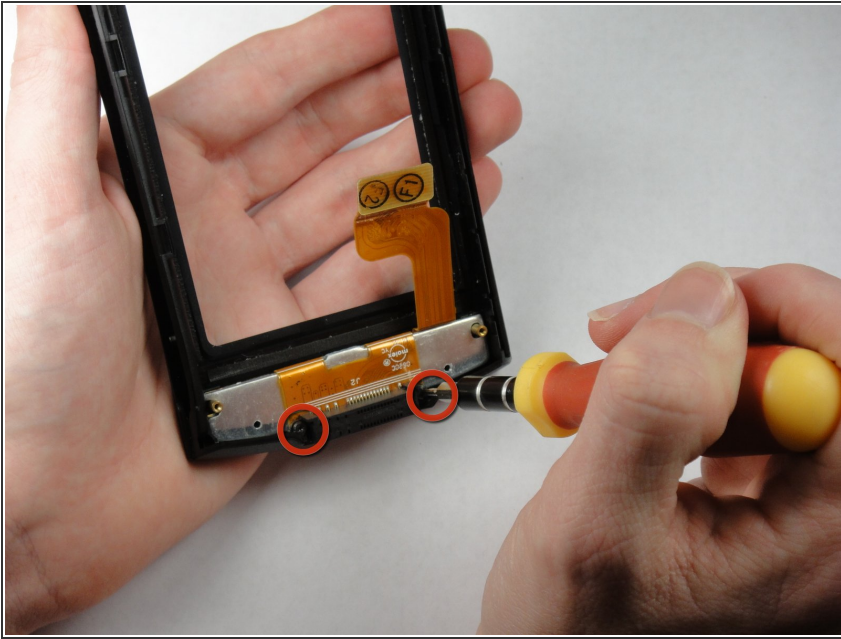
## Step 9 — Display



- Orient the device sideways, as shown in the picture.
- Lightly push the front of the display to separate it from the front panel.
- ⓘ The battery in the picture will not be attached to the device at this point.

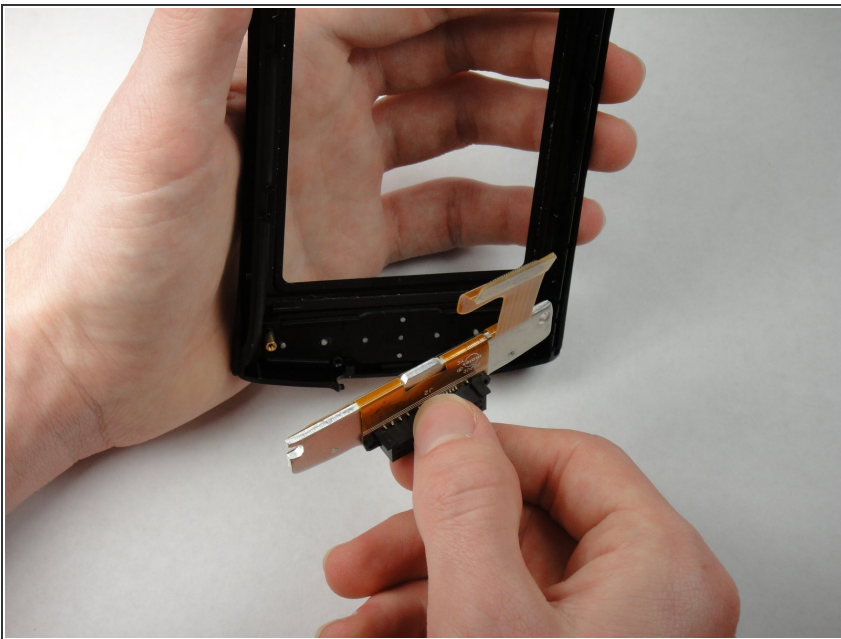


## Step 10 — Buttons and Connector Assembly



- Use a T5 Torx screwdriver to remove the 7.75mm screws at the bottom of the device.
- ⓘ It may take some manipulation to remove the screws.

## Step 11



- Lift the button and connector assembly from the front panel.

To reassemble your device, follow these instructions in reverse order.