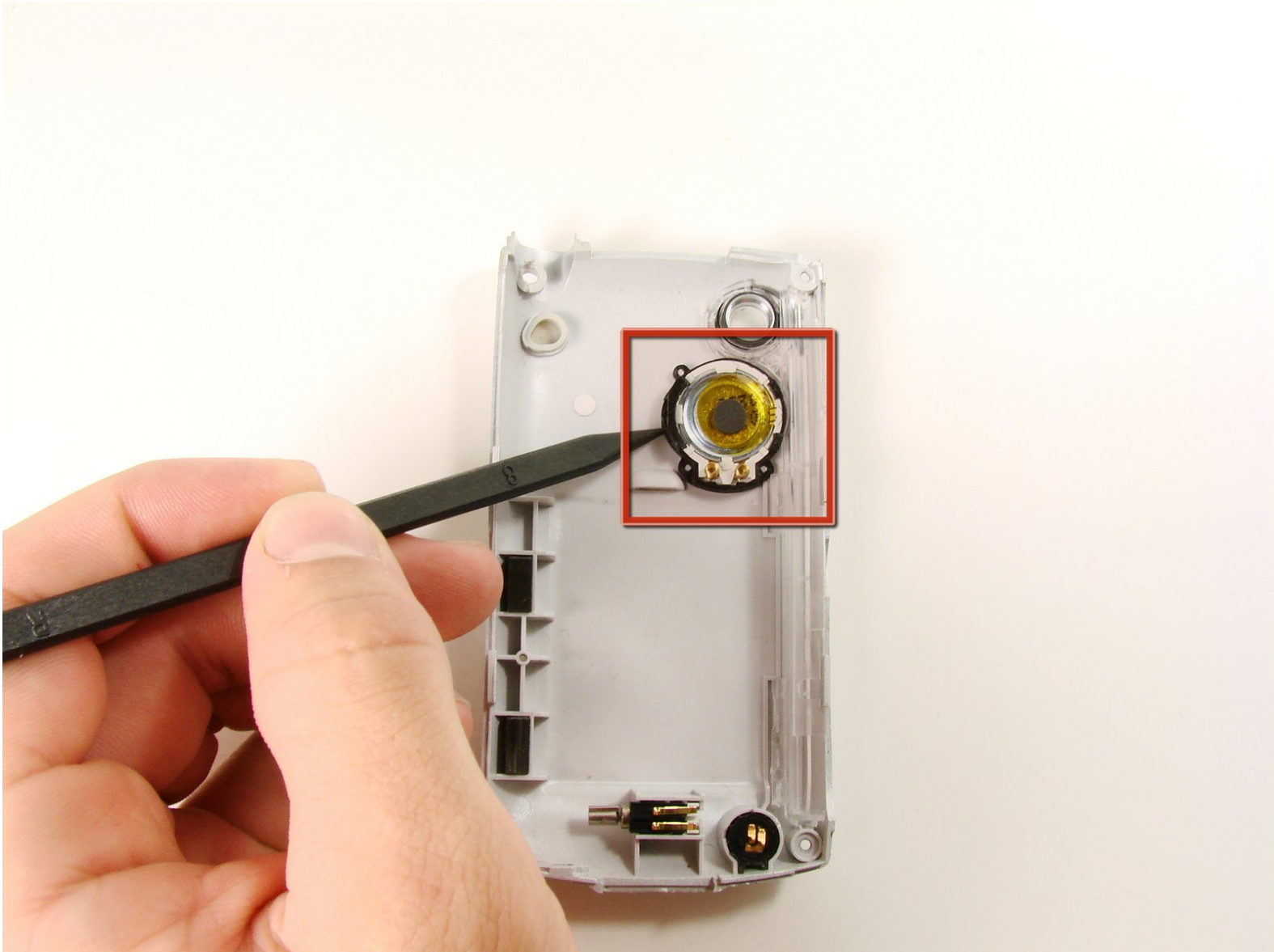




Palm Treo 600 Speaker Replacement

Written By: Clement Poisson



INTRODUCTION

Replace the speaker



TOOLS:

- [iFixit Opening Tools](#) (1)
 - [Tweezers](#) (1)
 - [Spudger](#) (1)
 - [T6 Torx Screwdriver](#) (1)
-

Step 1 — Back Case



- On the back of the device, locate the 3 rubber plugs, and use a plastic spudger to remove them.

Step 2



- Use the T6 Torx Screwdriver to remove all 4 screws.
- ⓘ You have to first remove the Stylus to access the 4th screw.

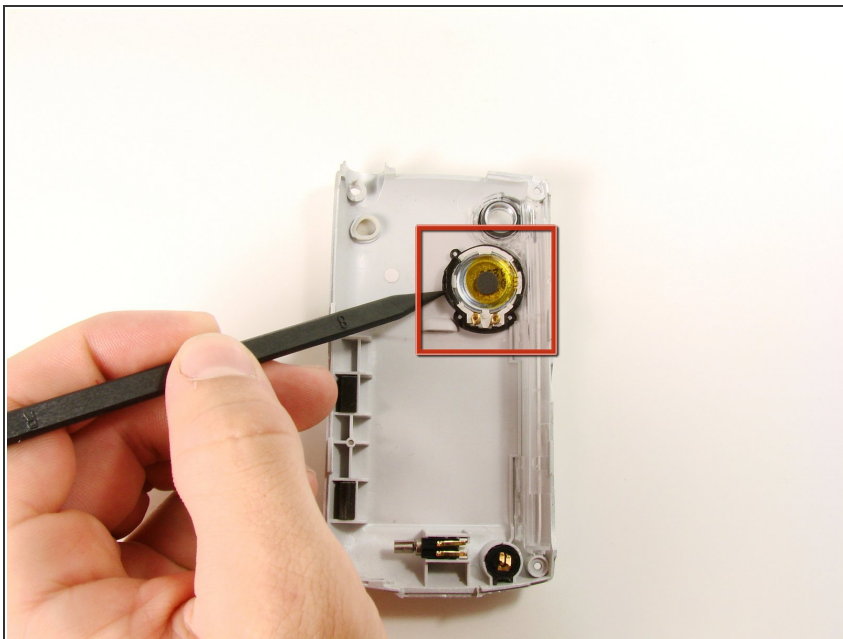
Step 3



- Using a plastic opening tool, carefully separate the front and back cases.

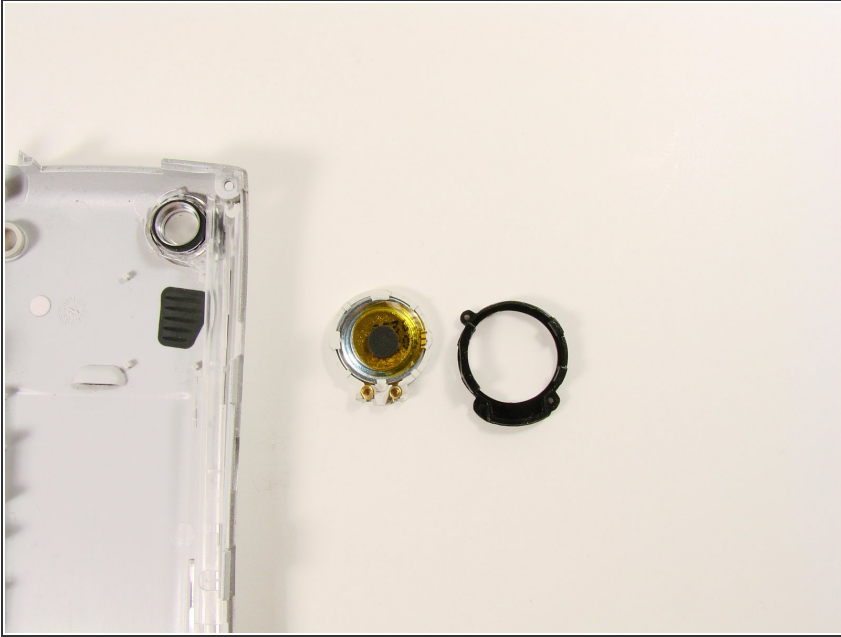
i Note: The antenna will detach from the phone.

Step 4 — Speaker



- Using the spudger, pull the speaker straight up.

Step 5



- Gently pull the rubber coating off of the speaker.

To reassemble your device, follow these instructions in reverse order.