



# Palm Treo 650 Camera Replacement

Written By: cgood



# INTRODUCTION

This guide will help you access and replace the Treo's camera if it is no longer functional.



## TOOLS:

- [Phillips #00 Screwdriver](#) (1)
  - [Spudger](#) (1)
  - [T5 Torx Screwdriver](#) (1)
  - [iFixit Opening Tools](#) (1)
-

## Step 1 — Battery



- Position the phone so the screen faces down.
- Remove the stylus found on the back of the phone.

## Step 2



- To remove the battery cover, hold down the button in the middle of the phone's back.
- Slide the cover down to remove. Set the cover aside.



## Step 3



- Lift the edge of the battery, separating contact points, and pull out as pictured.

## Step 4 — Case



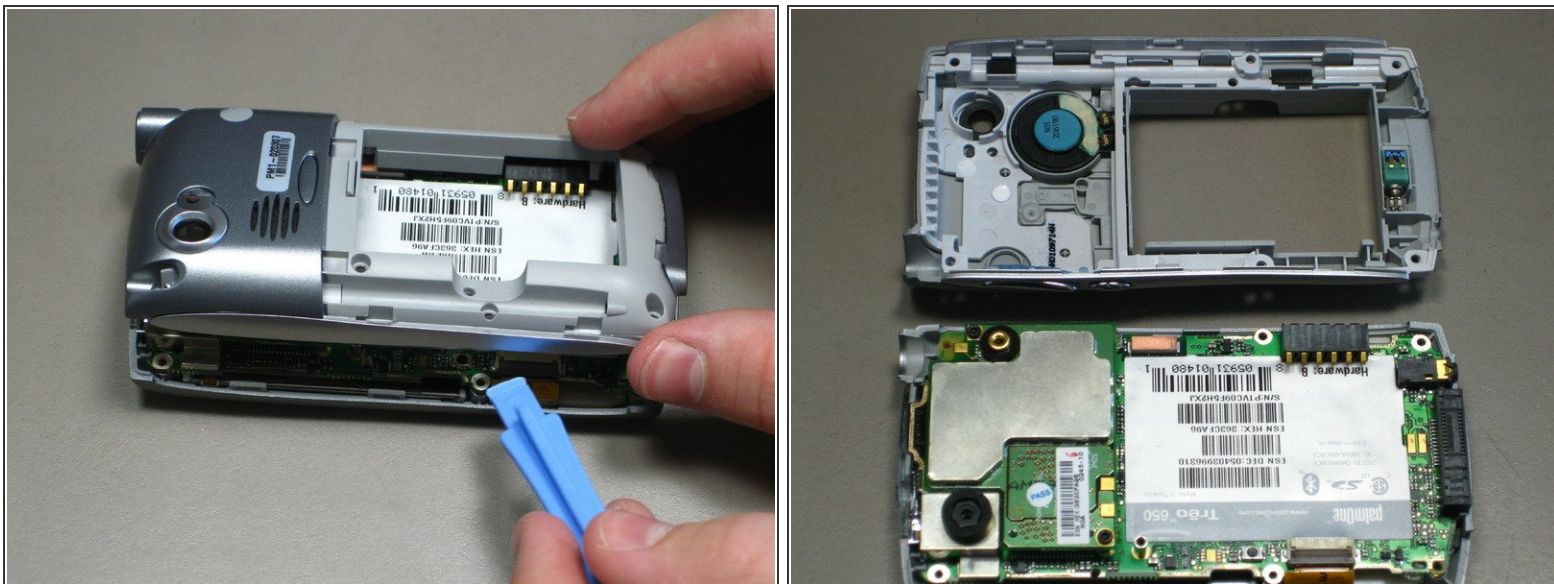
- Remove the small round rubber cover on the back of the phone located immediately below the antenna.
- ⓘ This will uncover a screw that will be removed in the next step.

## Step 5



- Unscrew six black 6.9 mm Torx screws with a T5 Torx Screwdriver.
- Unscrew one 9.75 mm Phillips antenna screw with a Phillips #00 Screwdriver.
- Pull out the antenna.

## Step 6



- Pry the back cover off using a spudger or similar tool.
- ⓘ The back cover is attached by several small clips on the inside.

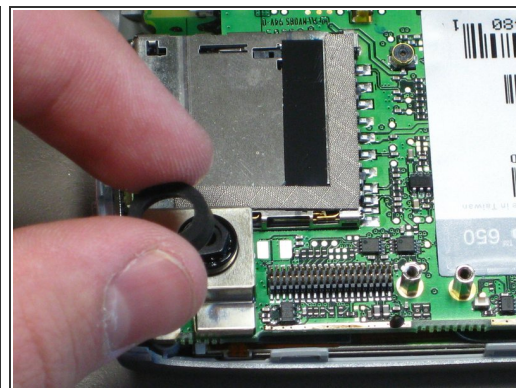
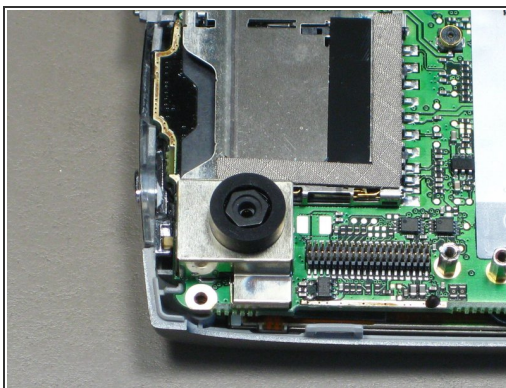


## Step 7 — Camera



- Remove the two 3.75 mm screws.
- Pull off the logic board.

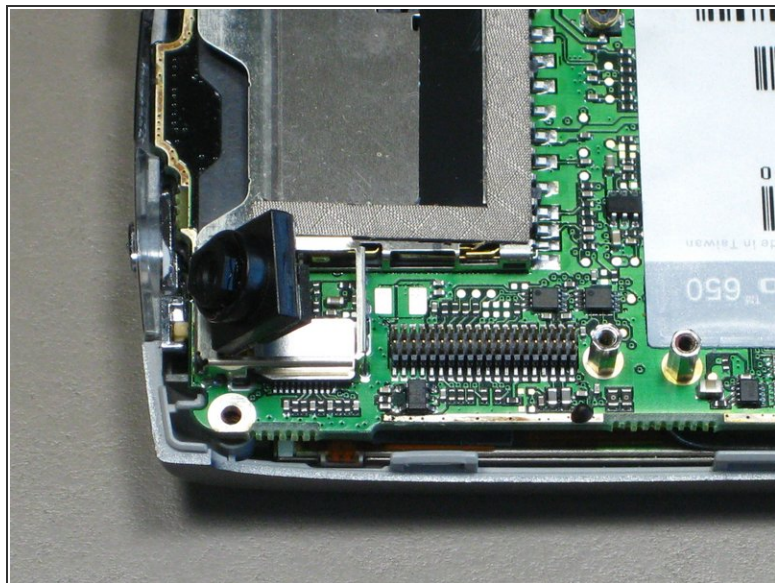
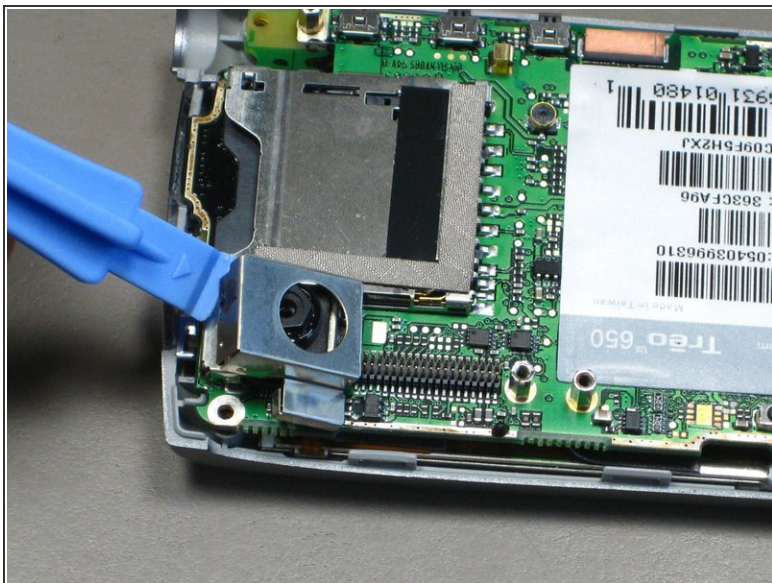
## Step 8



- Pull the rubber ring off of the camera.



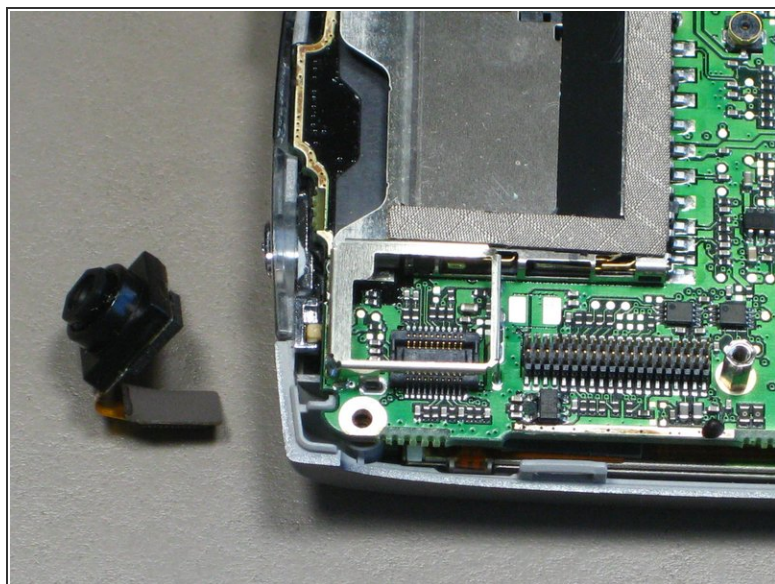
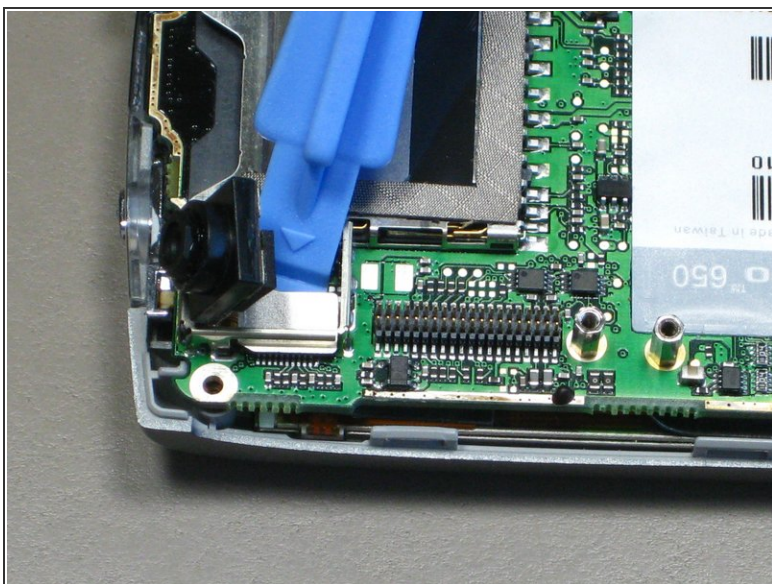
## Step 9



- Pry off the metal camera case.

⚠ Lift up the camera, but do not remove. The connector must be detached first.

## Step 10



- Pry off the camera connector plug.
- Remove the camera.

To reassemble your device, follow these instructions in reverse order.