



# Palm Treo 650 Case Replacement

Written By: mmedrano



# INTRODUCTION

Need to access the interior. Here's how to take off the case to do that.



## TOOLS:

- [Phillips #00 Screwdriver](#) (1)
  - [Spudger](#) (1)
  - [T5 Torx Screwdriver](#) (1)
-

## Step 1 — Battery



- Position the phone so the screen faces down.
- Remove the stylus found on the back of the phone.

## Step 2



- To remove the battery cover, hold down the button in the middle of the phone's back.
- Slide the cover down to remove. Set the cover aside.



### Step 3



- Lift the edge of the battery, separating contact points, and pull out as pictured.

### Step 4 — Case



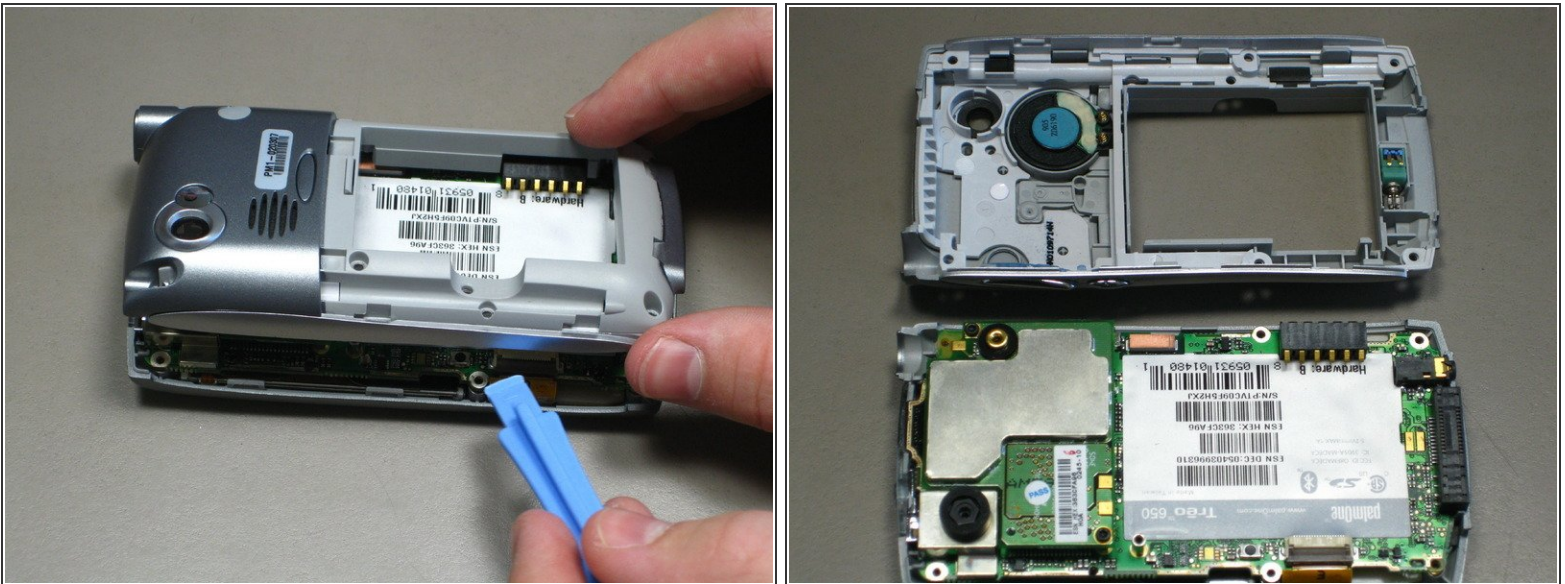
- Remove the small round rubber cover on the back of the phone located immediately below the antenna.
- ⓘ This will uncover a screw that will be removed in the next step.

## Step 5



- Unscrew six black 6.9 mm Torx screws with a T5 Torx Screwdriver.
- Unscrew one 9.75 mm Phillips antenna screw with a Phillips #00 Screwdriver.
- Pull out the antenna.

## Step 6



- Pry the back cover off using a spudger or similar tool.
- ⓘ The back cover is attached by several small clips on the inside.

To reassemble your device, follow these instructions in reverse order.

This document was generated on 2019-11-19 09:47:37 AM (MST).

