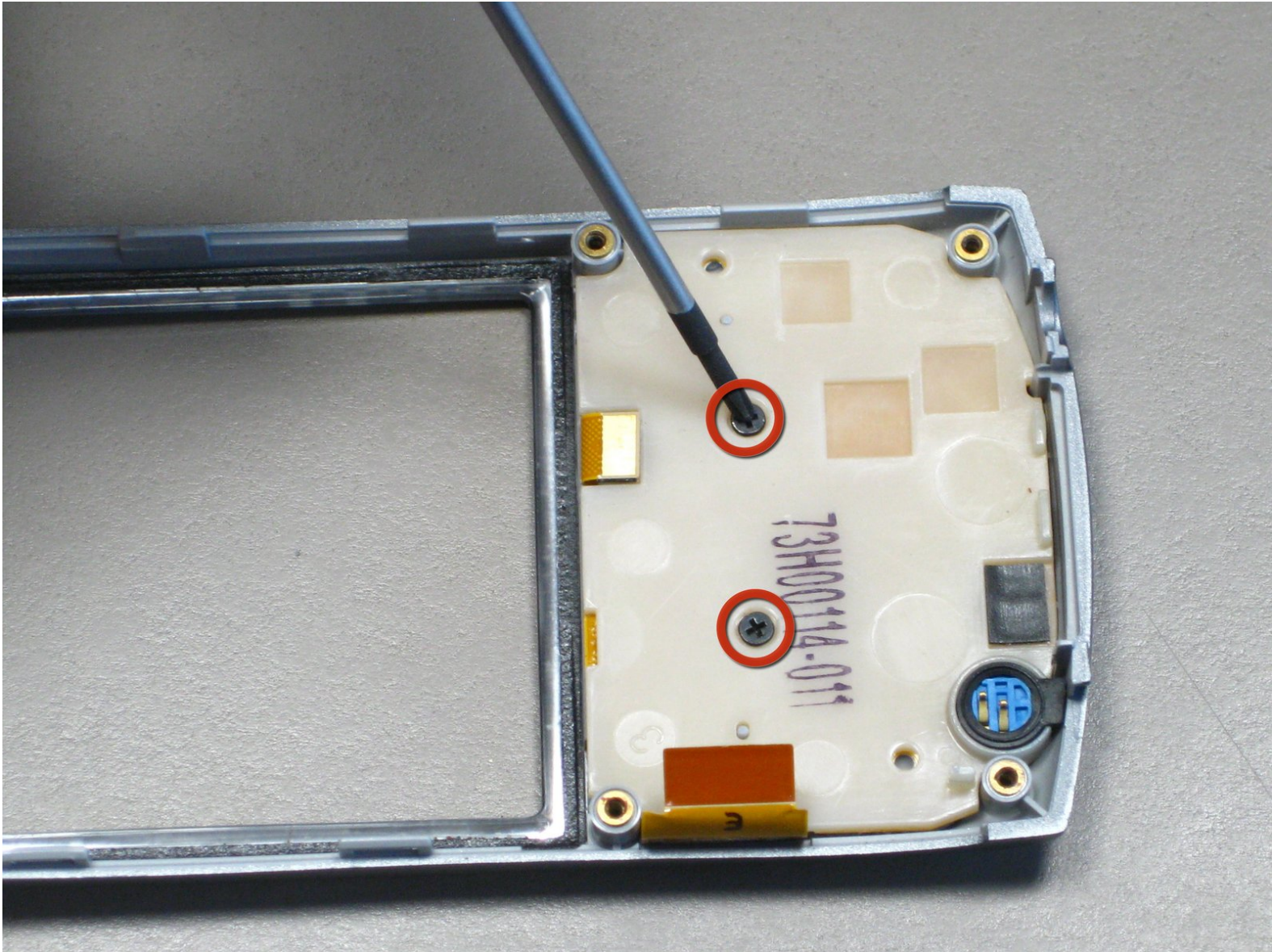




Palm Treo 650 Keyboard Replacement

Written By: cgood



INTRODUCTION

This guide will help you take apart, clean, and (if necessary) replace the palm treo keyboard.



TOOLS:

- [Phillips #00 Screwdriver](#) (1)
 - [Spudger](#) (1)
 - [T5 Torx Screwdriver](#) (1)
 - [iFixit Opening Tools](#) (1)
-

Step 1 — Battery



- Position the phone so the screen faces down.
- Remove the stylus found on the back of the phone.

Step 2



- To remove the battery cover, hold down the button in the middle of the phone's back.
- Slide the cover down to remove. Set the cover aside.

Step 3



- Lift the edge of the battery, separating contact points, and pull out as pictured.

Step 4 — Case



- Remove the small round rubber cover on the back of the phone located immediately below the antenna.
- ⓘ This will uncover a screw that will be removed in the next step.

Step 5



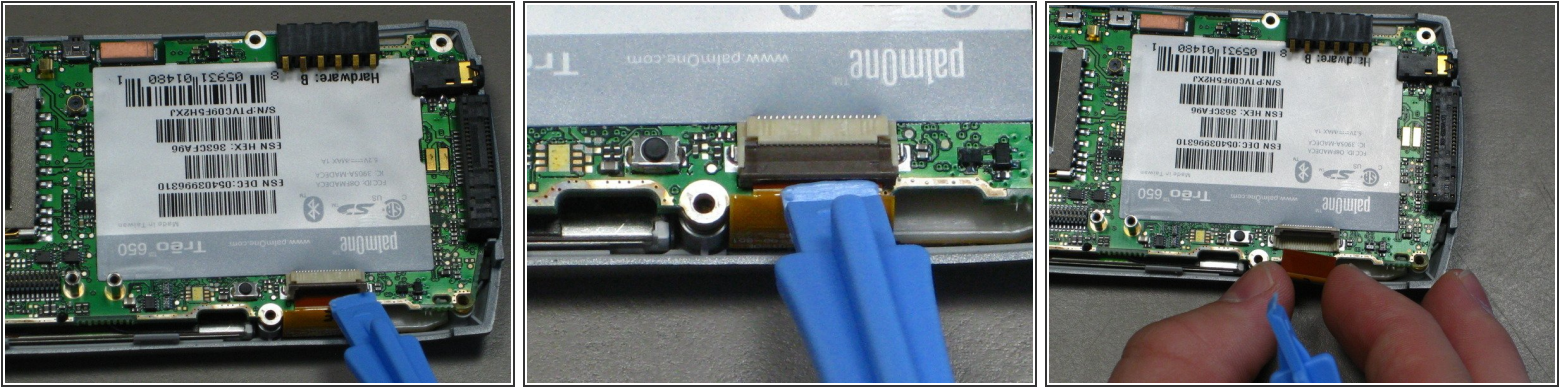
- Unscrew six black 6.9 mm Torx screws with a T5 Torx Screwdriver.
- Unscrew one 9.75 mm Phillips antenna screw with a Phillips #00 Screwdriver.
- Pull out the antenna.

Step 6



- Pry the back cover off using a spudger or similar tool.
- ⓘ The back cover is attached by several small clips on the inside.

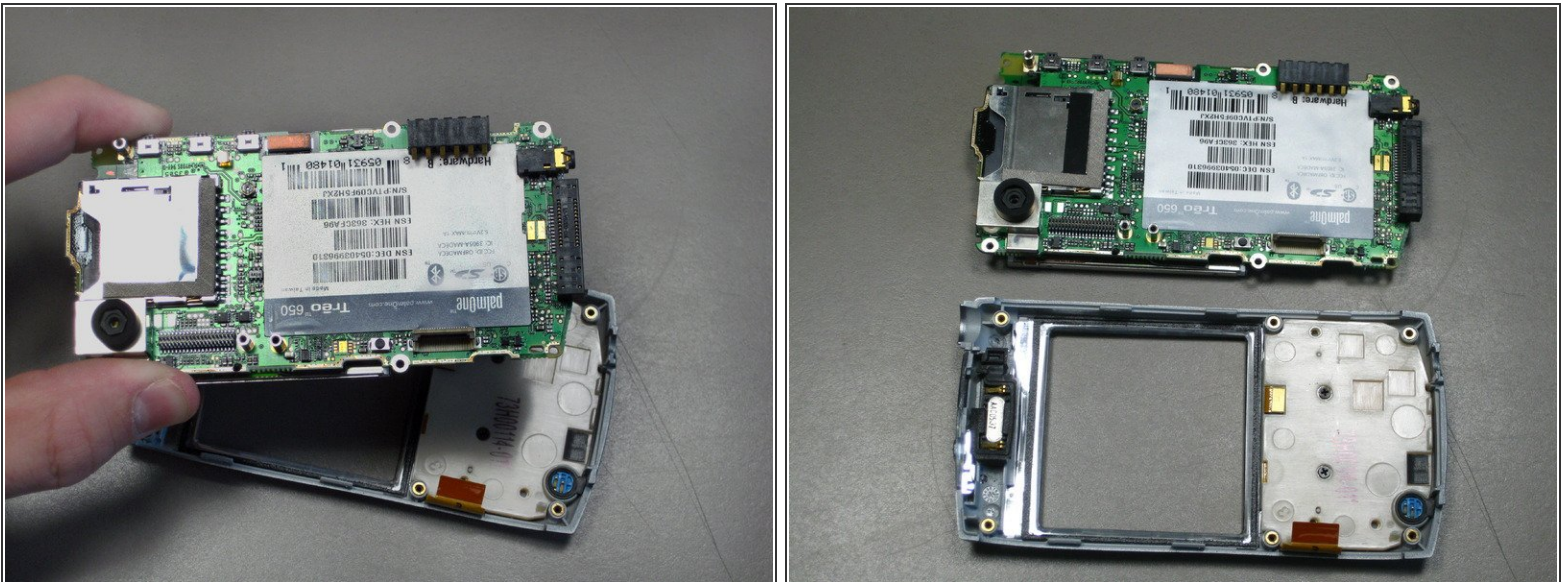
Step 7 — Motherboard



- Unclip the gray tab.
- Pull out the orange ribbon cable.

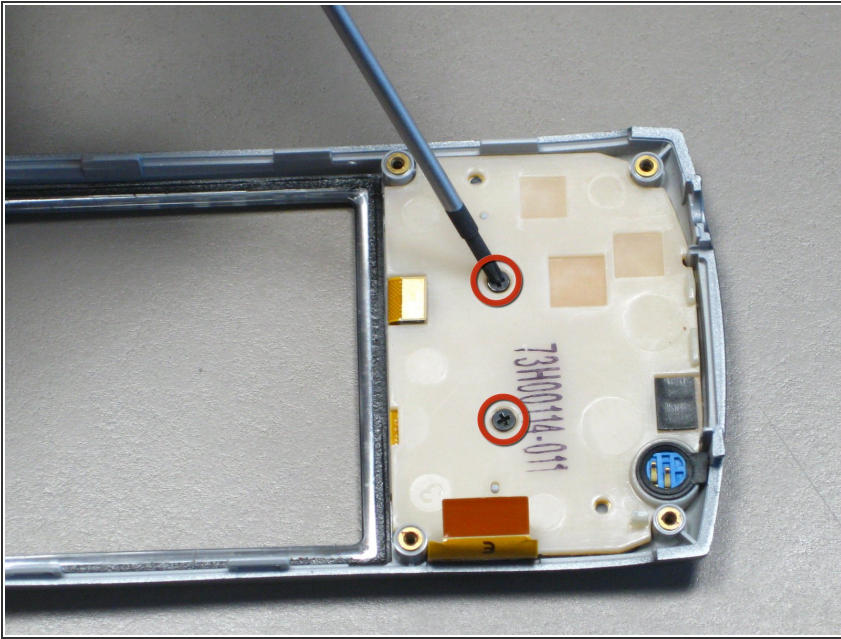
⚠ Do not remove the motherboard before disconnecting the ribbon cable--Damage may occur!

Step 8



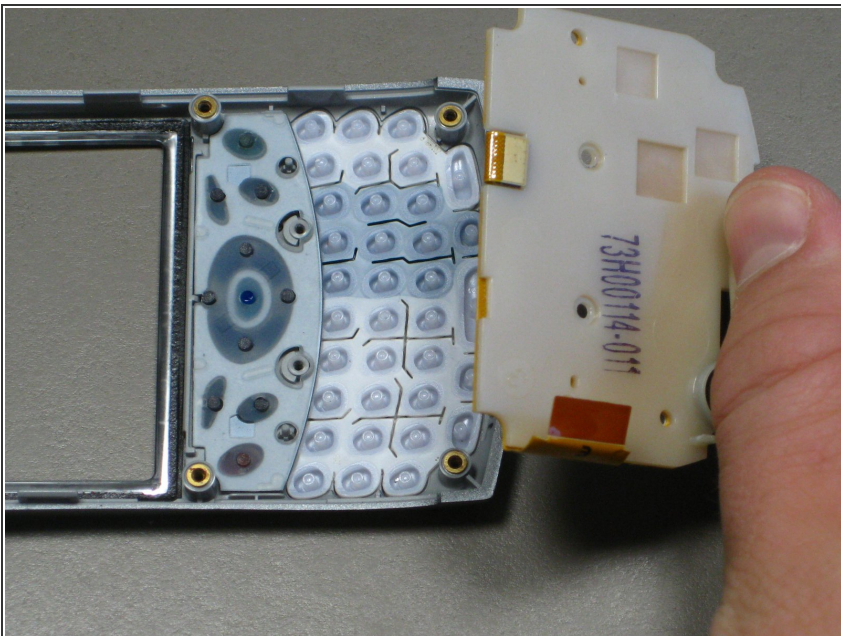
- Pull off the mother board.
- Install replacement or repaired motherboard, reversing steps above.

Step 9 — Keyboard



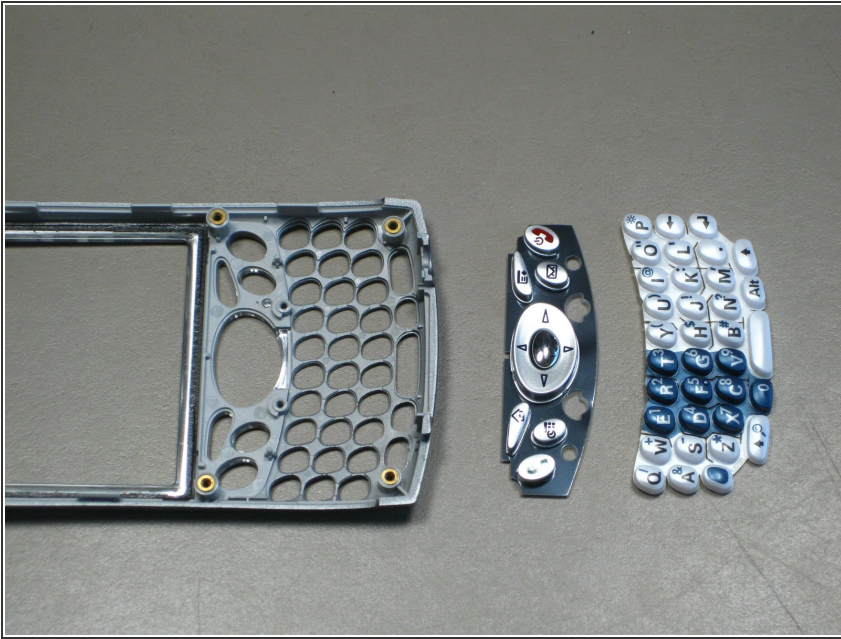
- Unscrew the two 3.2 mm screws with a Phillips #00 screwdriver.

Step 10



- Pull off the circuit board.

Step 11



- Remove the keypad for cleaning or replacing.

To reassemble your device, follow these instructions in reverse order.