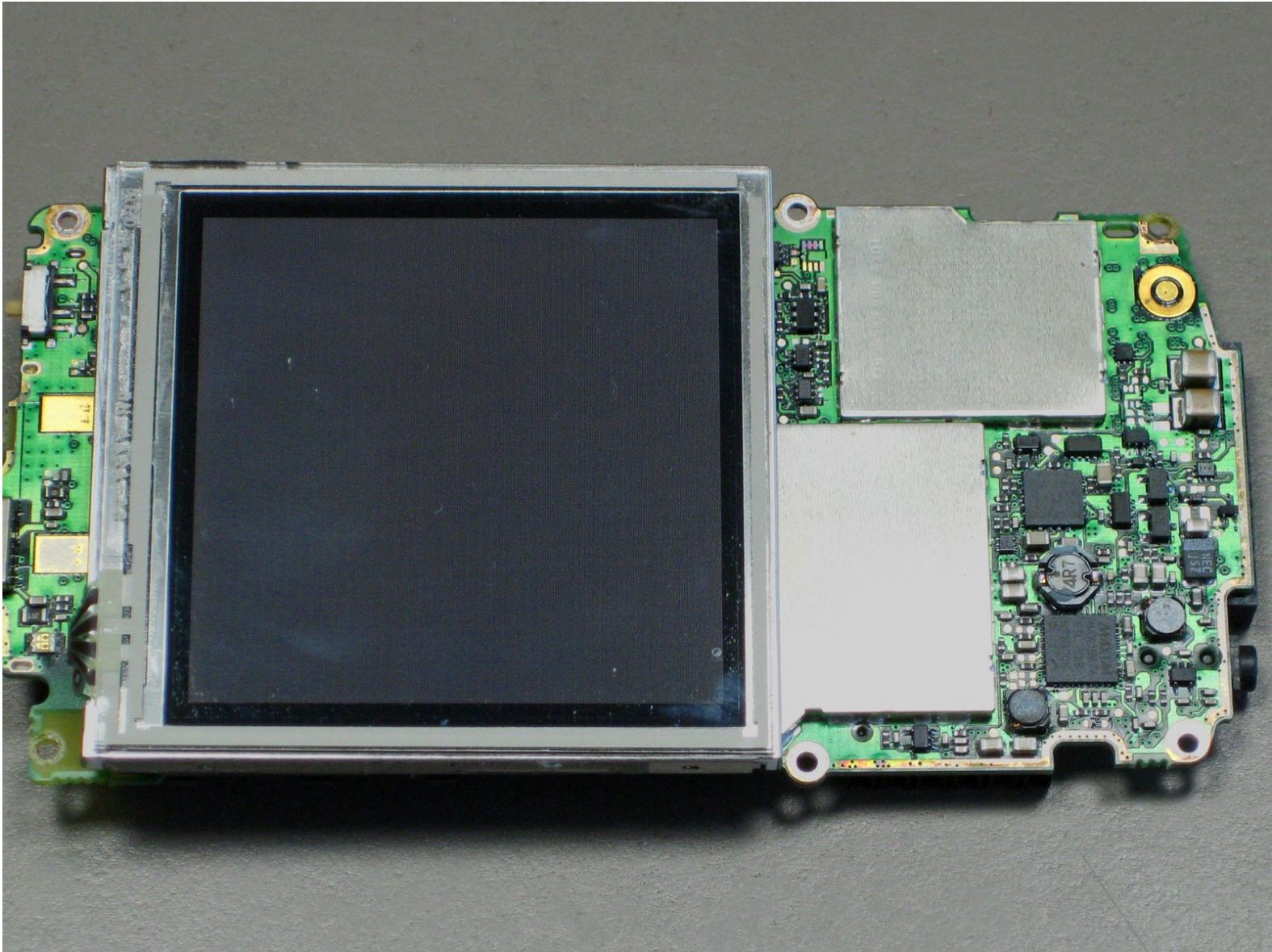




# Palm Treo 650 LCD Screen Replacement

Written By: cgood



---

# INTRODUCTION

This is a repair guide to access and replace the LCD screen.

---



## TOOLS:

- [Phillips #00 Screwdriver](#) (1)
  - [Spudger](#) (1)
  - [T5 Torx Screwdriver](#) (1)
  - [iFixit Opening Tools](#) (1)
-



## Step 1 — Battery



- Position the phone so the screen faces down.
- Remove the stylus found on the back of the phone.

## Step 2



- To remove the battery cover, hold down the button in the middle of the phone's back.
- Slide the cover down to remove. Set the cover aside.

## Step 3



- Lift the edge of the battery, separating contact points, and pull out as pictured.

## Step 4 — Case



- Remove the small round rubber cover on the back of the phone located immediately below the antenna.
- ⓘ This will uncover a screw that will be removed in the next step.



## Step 5



- Unscrew six black 6.9 mm Torx screws with a T5 Torx Screwdriver.
- Unscrew one 9.75 mm Phillips antenna screw with a Phillips #00 Screwdriver.
- Pull out the antenna.

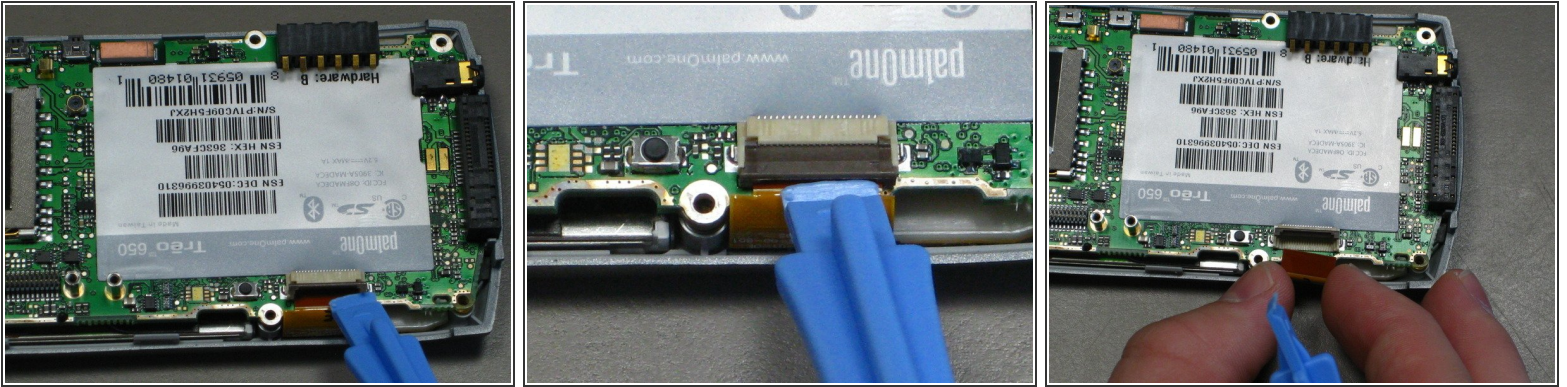
## Step 6



- Pry the back cover off using a spudger or similar tool.
- ⓘ The back cover is attached by several small clips on the inside.



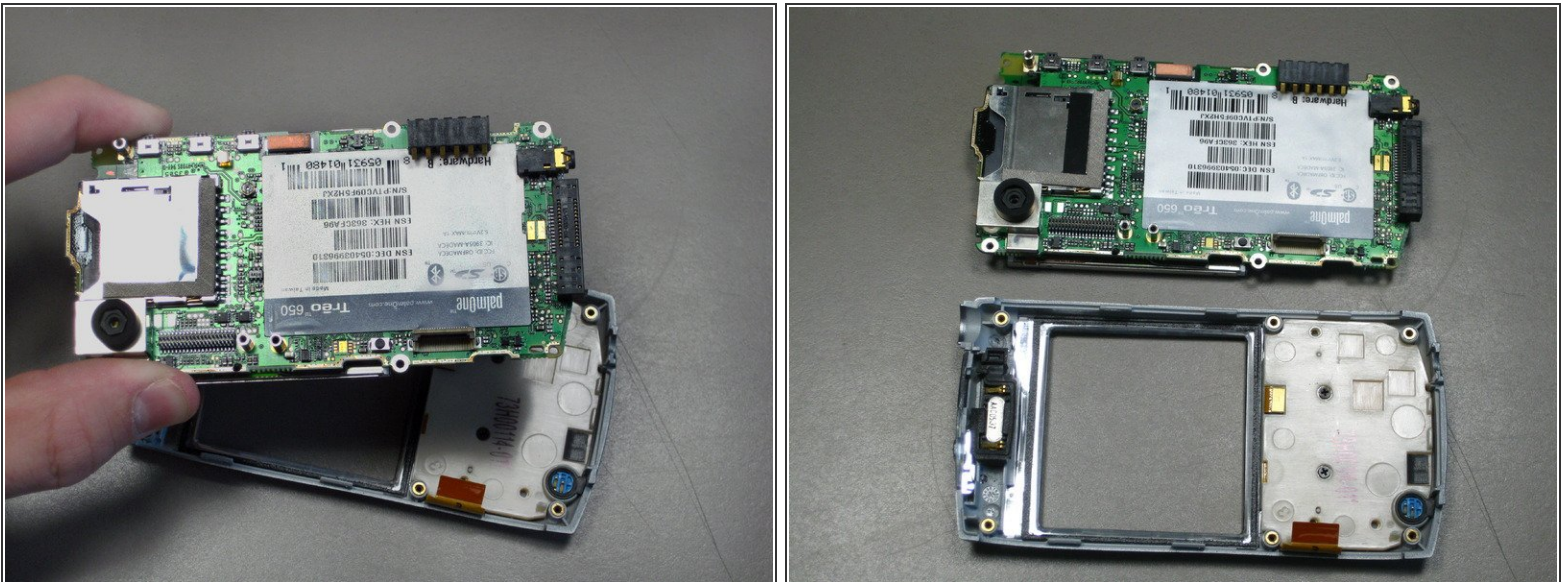
## Step 7 — Motherboard



- Unclip the gray tab.
- Pull out the orange ribbon cable.

⚠ Do not remove the motherboard before disconnecting the ribbon cable--Damage may occur!

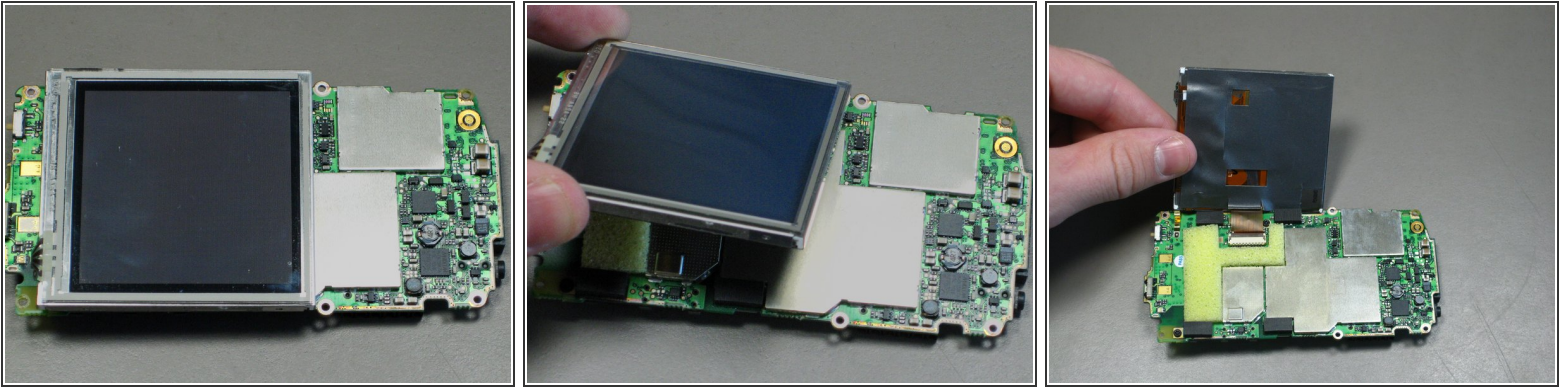
## Step 8



- Pull off the mother board.
- Install replacement or repaired motherboard, reversing steps above.



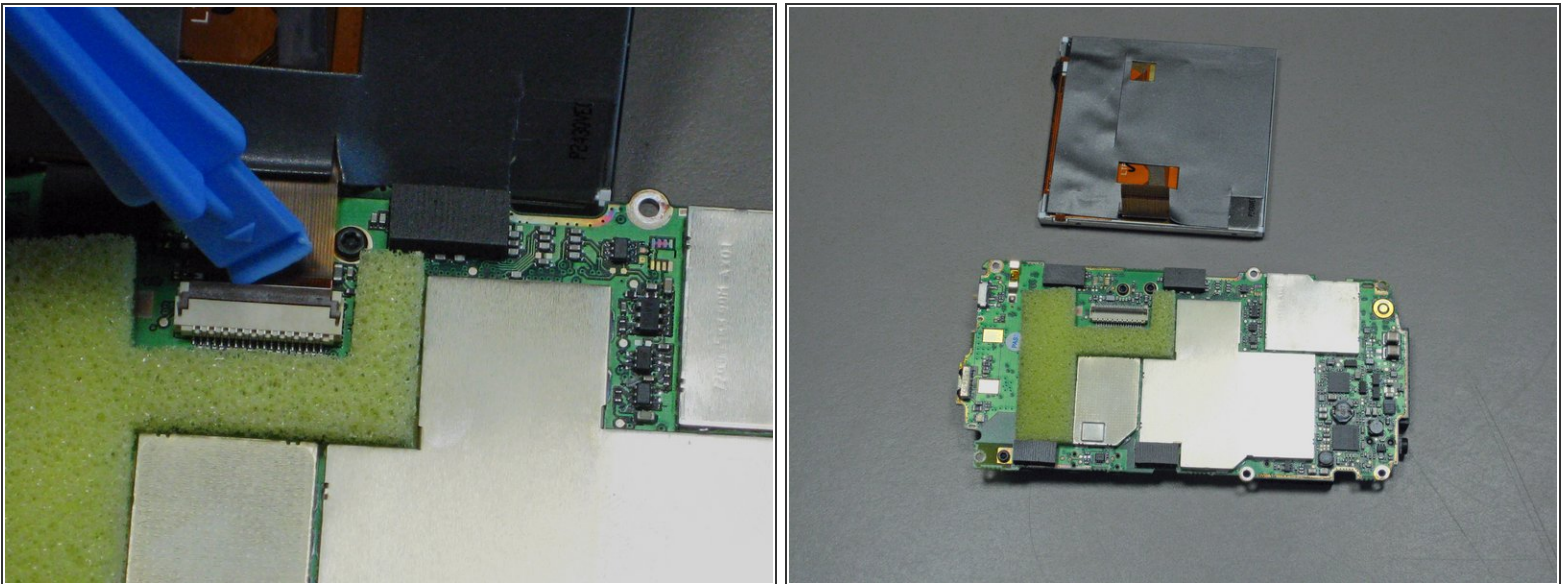
## Step 9 — LCD Screen



- Lift up the LCD screen so that the ribbon strip connecting it to the motherboard can be accessed.

⚠ Be careful not to pull off LCD screen yet.

## Step 10



- Unclip the gray tab.
- Pull out the orange ribbon strip.
- Remove the LCD screen.

To reassemble your device, follow these instructions in reverse order.

This document was generated on 2019-10-03 05:57:07 AM (MST).

