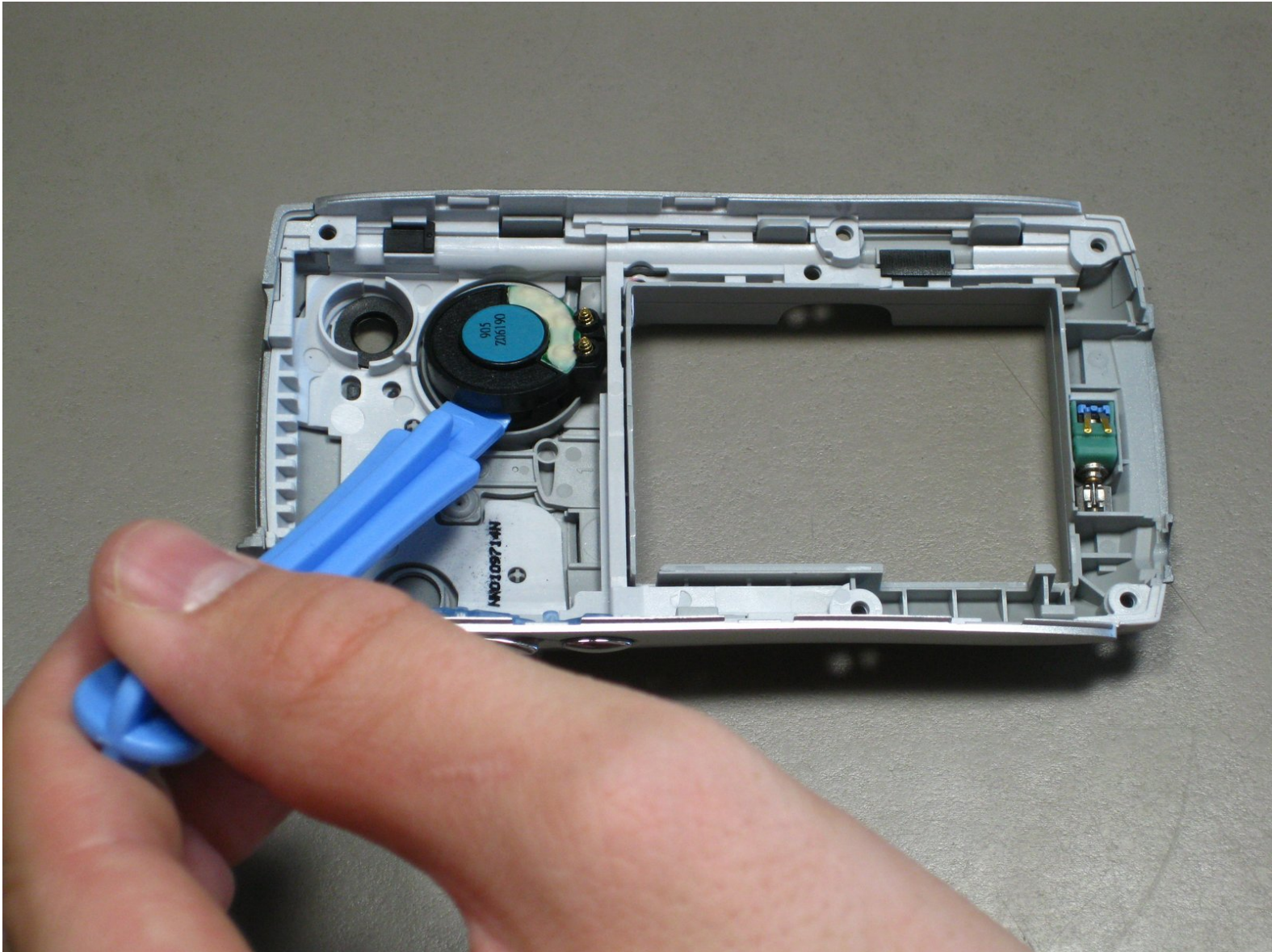




Palm Treo 650 Speaker Replacement

Written By: cgood



INTRODUCTION

This guide will show how to remove and replace the speaker from the phone shell.

TOOLS:

- [Phillips #00 Screwdriver](#) (1)
 - [Spudger](#) (1)
 - [T5 Torx Screwdriver](#) (1)
 - [iFixit Opening Tools](#) (1)
-

Step 1 — Battery



- Position the phone so the screen faces down.
- Remove the stylus found on the back of the phone.

Step 2



- To remove the battery cover, hold down the button in the middle of the phone's back.
- Slide the cover down to remove. Set the cover aside.

Step 3



- Lift the edge of the battery, separating contact points, and pull out as pictured.

Step 4 — Case



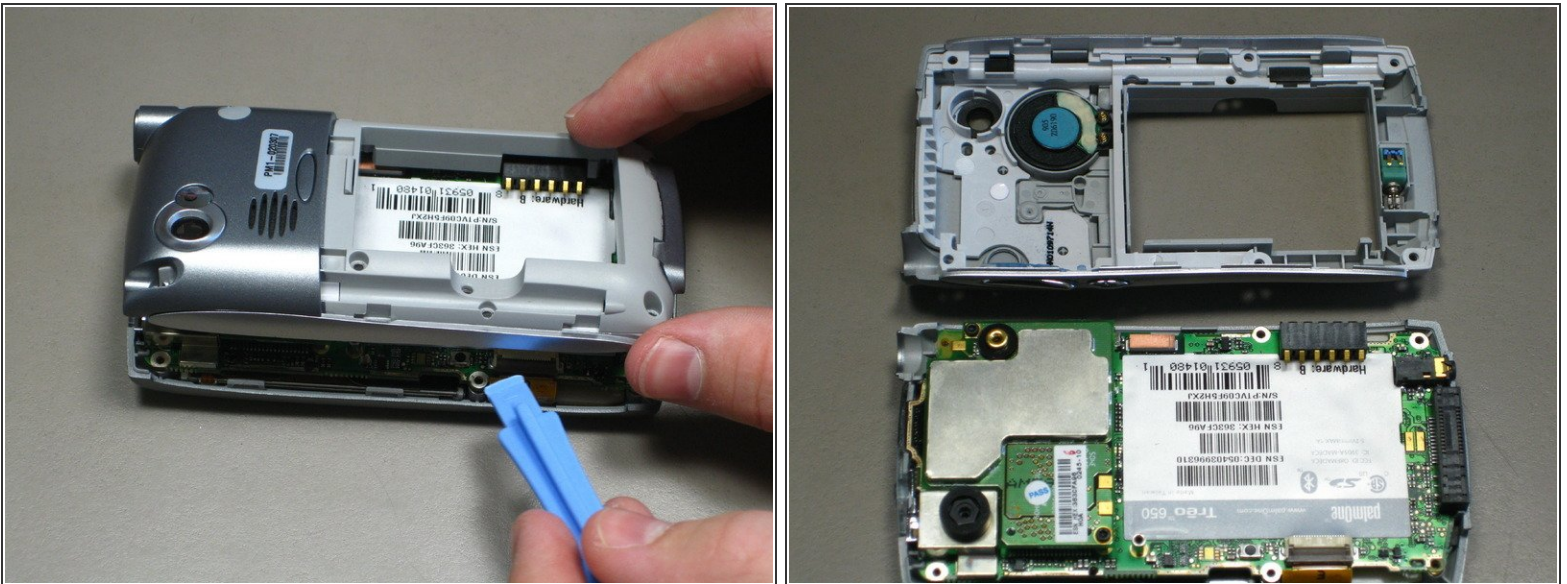
- Remove the small round rubber cover on the back of the phone located immediately below the antenna.
- ⓘ This will uncover a screw that will be removed in the next step.

Step 5



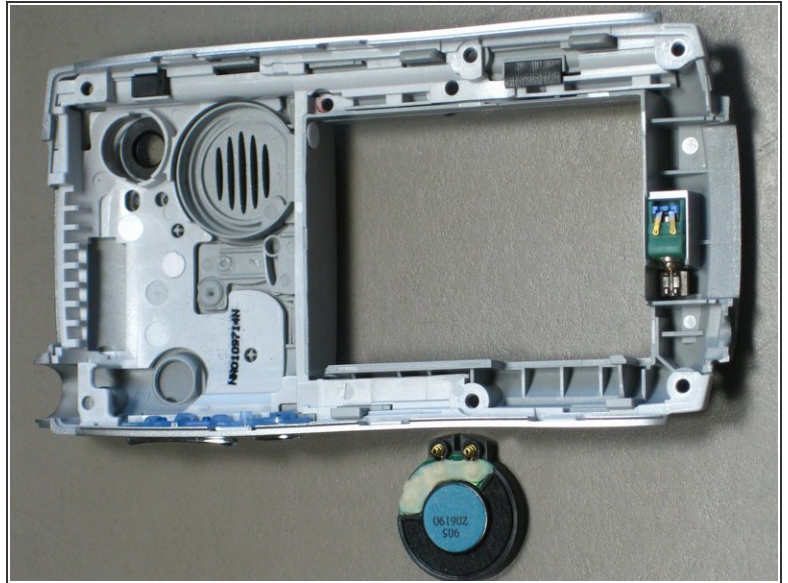
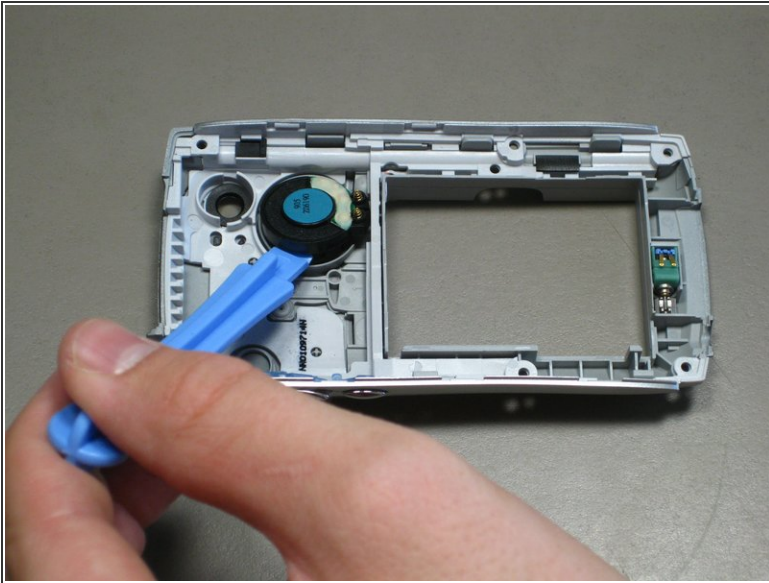
- Unscrew six black 6.9 mm Torx screws with a T5 Torx Screwdriver.
- Unscrew one 9.75 mm Phillips antenna screw with a Phillips #00 Screwdriver.
- Pull out the antenna.

Step 6



- Pry the back cover off using a spudger or similar tool.
- ⓘ The back cover is attached by several small clips on the inside.

Step 7 — Speaker



- Using an ipod case opener or similar tool, simply pry off the speaker.

⚠ This may be glued in, so remove carefully.

To reassemble your device, follow these instructions in reverse order.