



Palm Treo 680 Keyboard Replacement

Written By: Maiya123



INTRODUCTION

This guide shows you how to repair a disfunctional keyboard for the Palm Treo 680.



TOOLS:

- [Metal Spudger](#) (1)
 - [Phillips #00 Screwdriver](#) (1)
 - [T6 Torx Screwdriver](#) (1)
 - [Tweezers](#) (1)
-

Step 1 — Battery



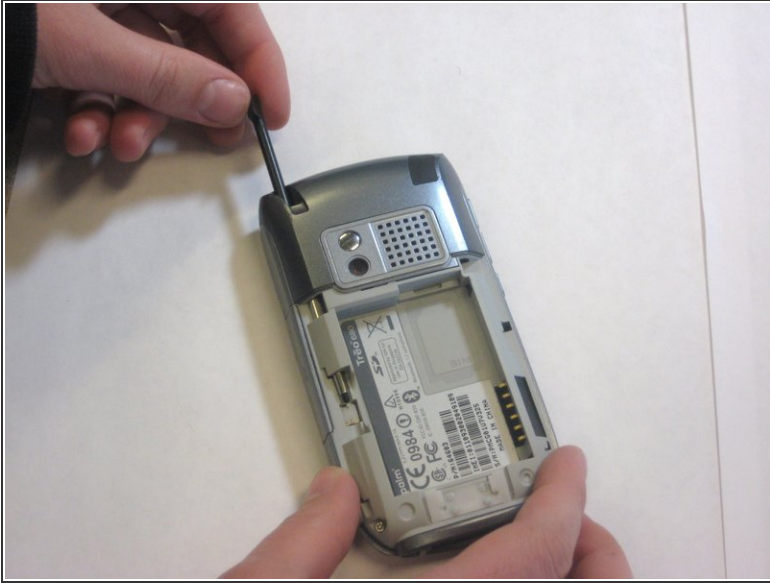
- Remove the battery cover by pressing on the small rectangular button located on the back of the phone.

Step 2



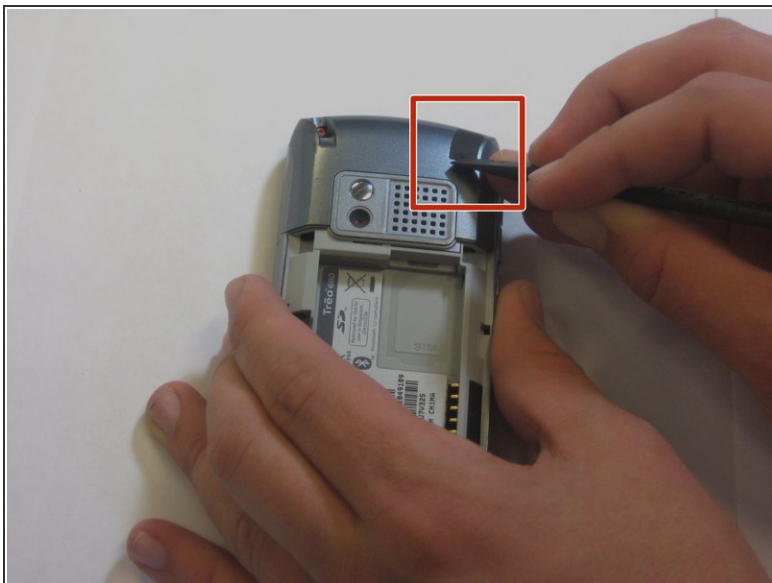
- Remove the battery by pulling it out towards you.

Step 3 — Back Panel



- Remove the stylus in order to access the screw.
- Remove the 27mm top-left screw using a T6 Torx screwdriver.

Step 4



- Using the spudger, remove the rubber rectangular cover located in the upper rear, right-hand corner.
- Remove the 27mm screw using the T6 Torx screwdriver.
 - ⓘ If there is a red Palm sticker covering this screw, puncture it to access the screw.

Step 5



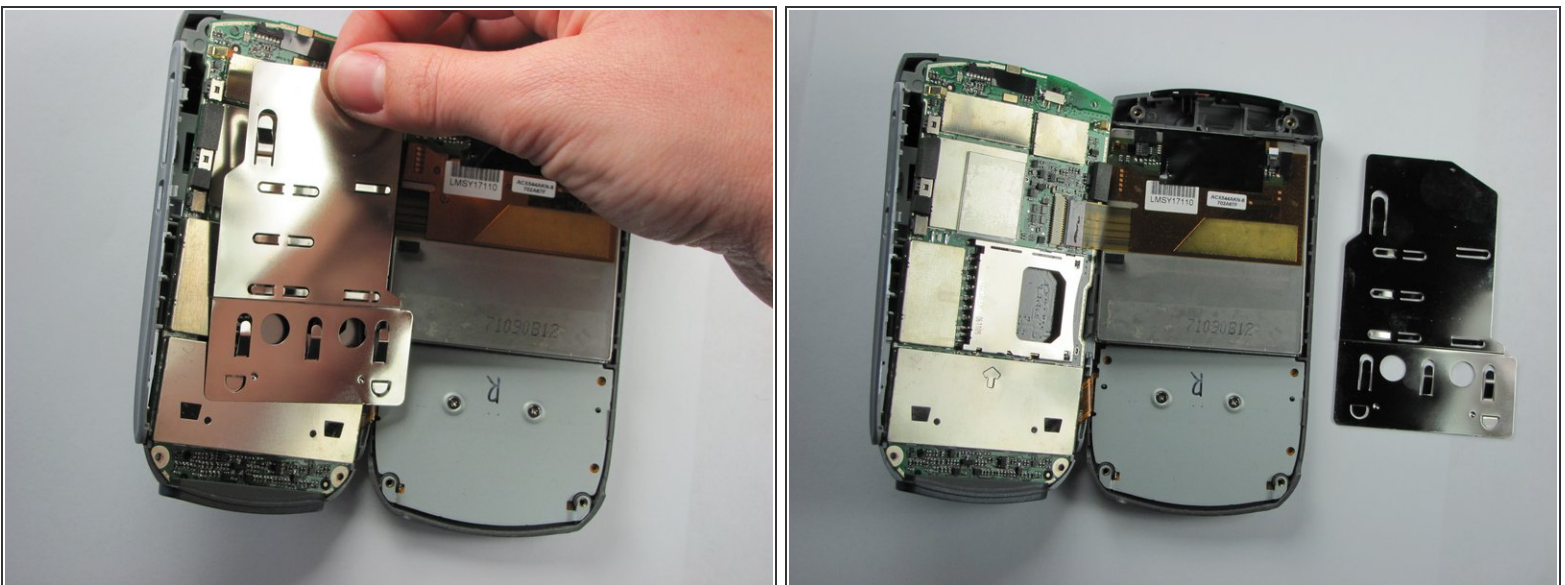
- Remove the remaining two 27mm screws from the bottom using the T6 screwdriver.

Step 6



- Turn the phone so the screen is facing the right side.
 - Use a spudger to carefully separate the back panel from the front panel to access components inside the phone.
 - Separate the covers from the left side of the device as indicated in the picture.
- ⚠ The right side contains orange ribbons that are easily damaged.

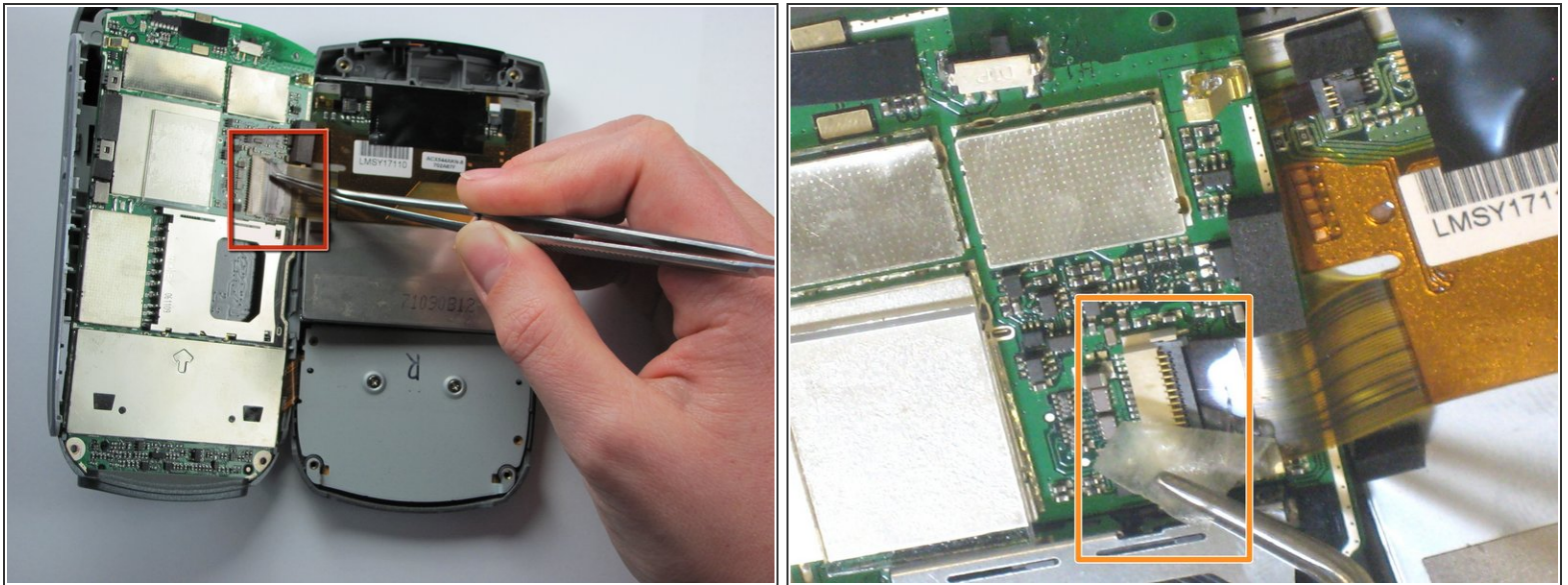
Step 7 — Motherboard



- Slide the slim metal plate upwards until it disconnects from the motherboard.

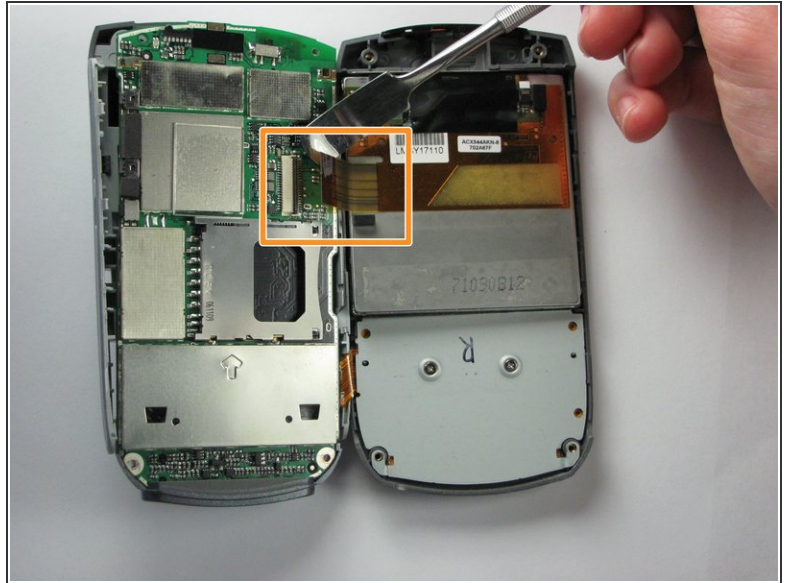
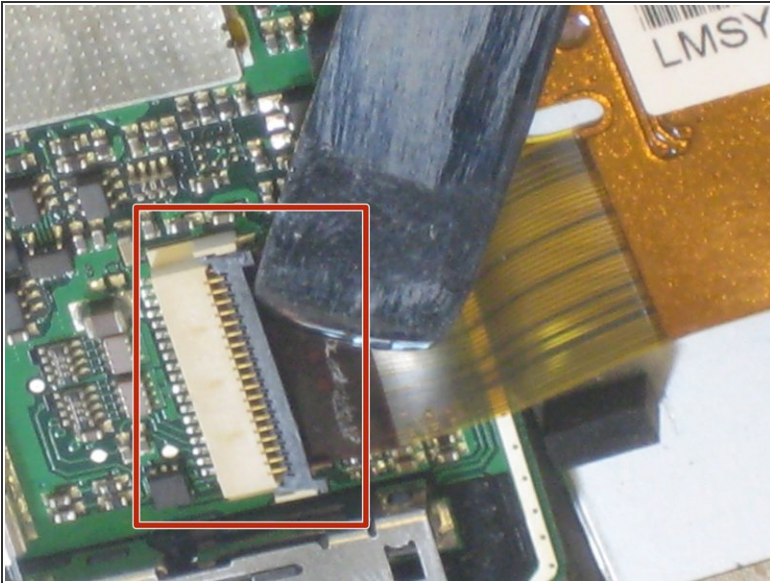
⚠ DO NOT bend or crinkle this metal plate. It will be VERY DIFFICULT, IF NOT IMPOSSIBLE, to slide it back into place when you are re-assembling if you bend or crinkle this metal plate.

Step 8



- Locate the orange ribbon that connects the screen to the motherboard.
- Use tweezers to peel off the small piece of tape over the orange ribbon connector.

Step 9



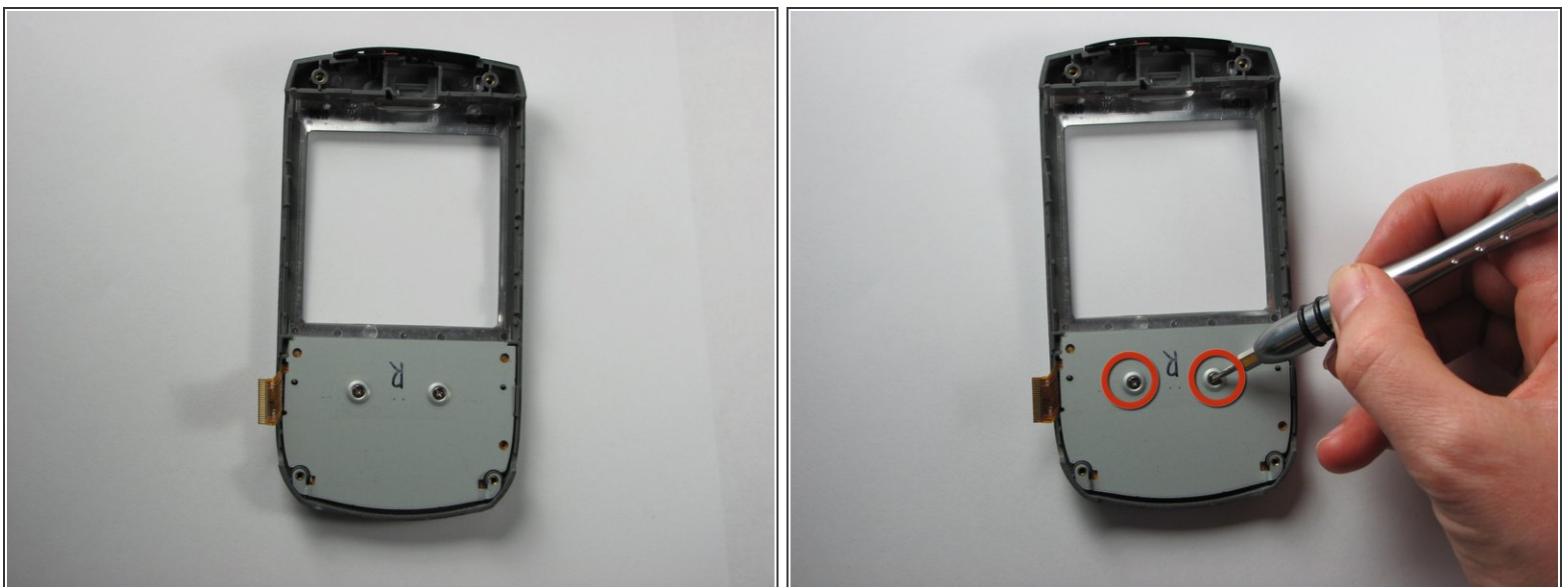
- Slide the spudger between the orange ribbon and black connector. Flip the black connector upwards to release the orange ribbon.
- Using the spudger, pull the orange ribbon away from the connector to confirm the wire is fully disconnected.

Step 10



- Carefully turn the phone over so the screen is face up.
- Locate the other orange ribbon that connects the motherboard to the faceplate.
- Slide the spudger between the orange ribbon and tan connector. Lift the tan connector up to release the orange ribbon.
- Separate the motherboard and faceplate of the Palm Treo.

Step 11 — Keyboard



- Take the face plate of Treo, and locate the backside of it.
- Unscrew the two screws on the back, using the T6 sized screwdriver.

Step 12



- Take off the plastic back panel, in order to gain access to the rubber keys of the keyboard.
- Simply push on the keys and function bar (from the front of the Treo). They should pop right out.

To reassemble your device, follow these instructions in reverse order.