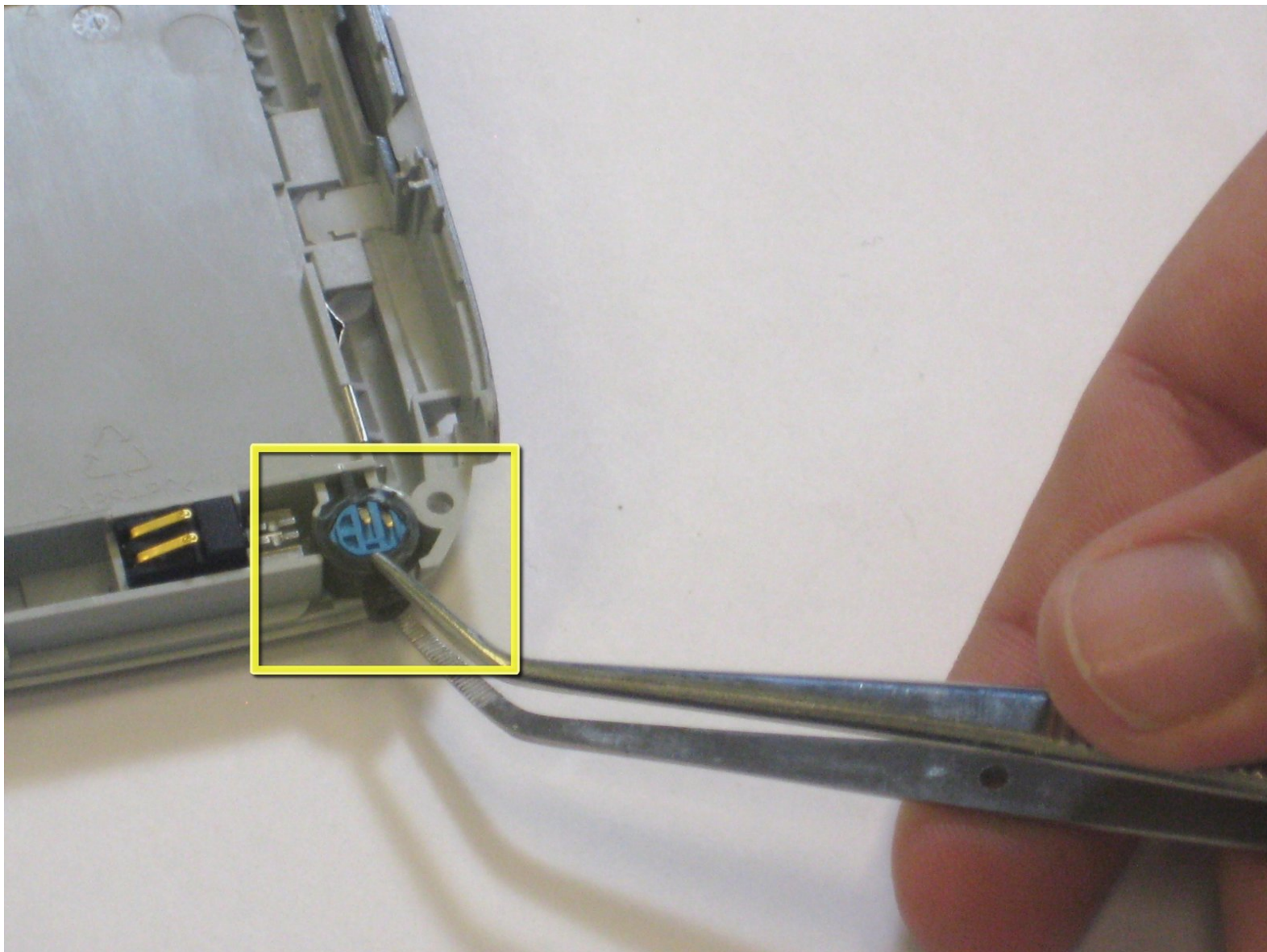




Palm Treo 680 Microphone Replacement

Written By: Maiya123



INTRODUCTION

This is a guide that indicates how to replace a faulty microphone for the Palm Treo 680.



TOOLS:

- [Metal Spudger](#) (1)
 - [Phillips #00 Screwdriver](#) (1)
 - [Tweezers](#) (1)
-

Step 1 — Battery



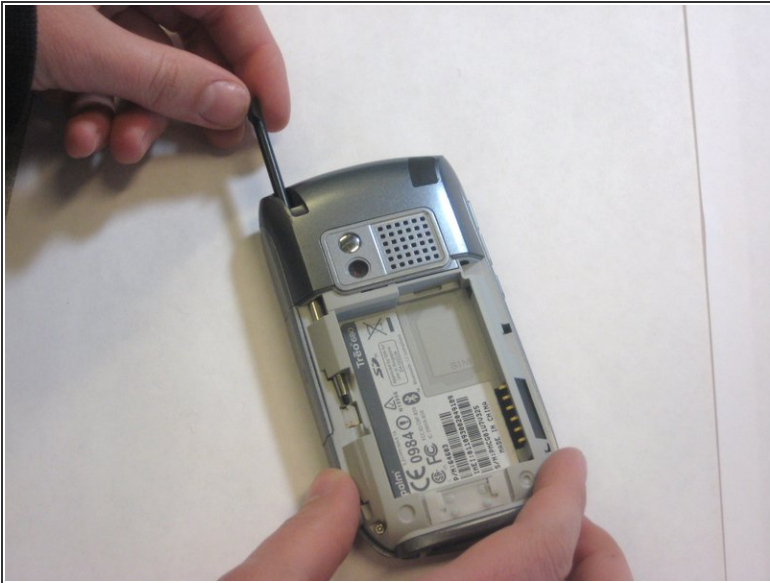
- Remove the battery cover by pressing on the small rectangular button located on the back of the phone.

Step 2



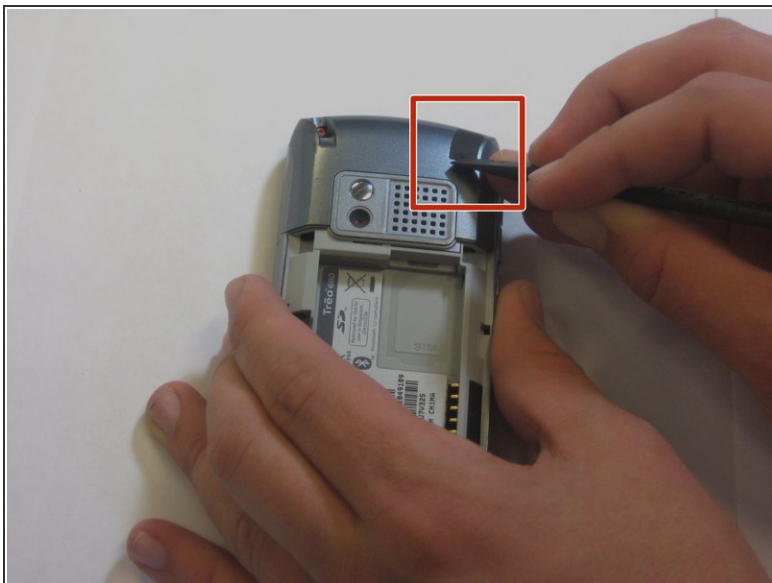
- Remove the battery by pulling it out towards you.

Step 3 — Back Panel



- Remove the stylus in order to access the screw.
- Remove the 27mm top-left screw using a T6 Torx screwdriver.

Step 4



- Using the spudger, remove the rubber rectangular cover located in the upper rear, right-hand corner.
- Remove the 27mm screw using the T6 Torx screwdriver.
 - ⓘ If there is a red Palm sticker covering this screw, puncture it to access the screw.

Step 5



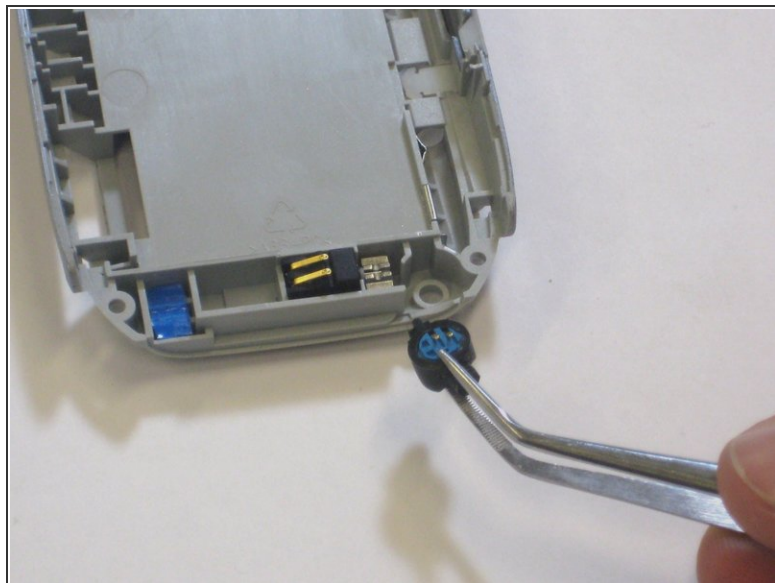
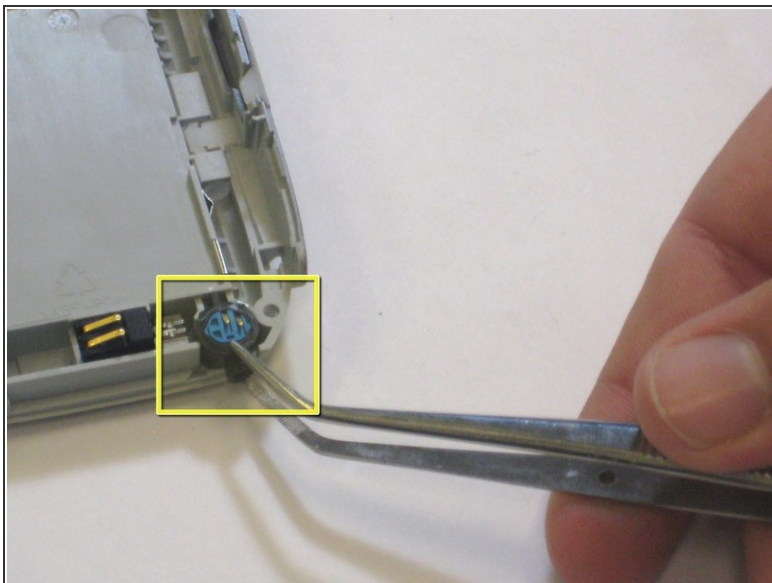
- Remove the remaining two 27mm screws from the bottom using the T6 screwdriver.

Step 6



- Turn the phone so the screen is facing the right side.
 - Use a spudger to carefully separate the back panel from the front panel to access components inside the phone.
 - Separate the covers from the left side of the device as indicated in the picture.
- ⚠ The right side contains orange ribbons that are easily damaged.

Step 7 — Microphone



- Using a pair of tweezers, grasp the blue rubber microphone.
- Pull the rubber microphone up and back to remove it.
- Now you have successfully removed the microphone.

To reassemble your device, follow these instructions in reverse order.