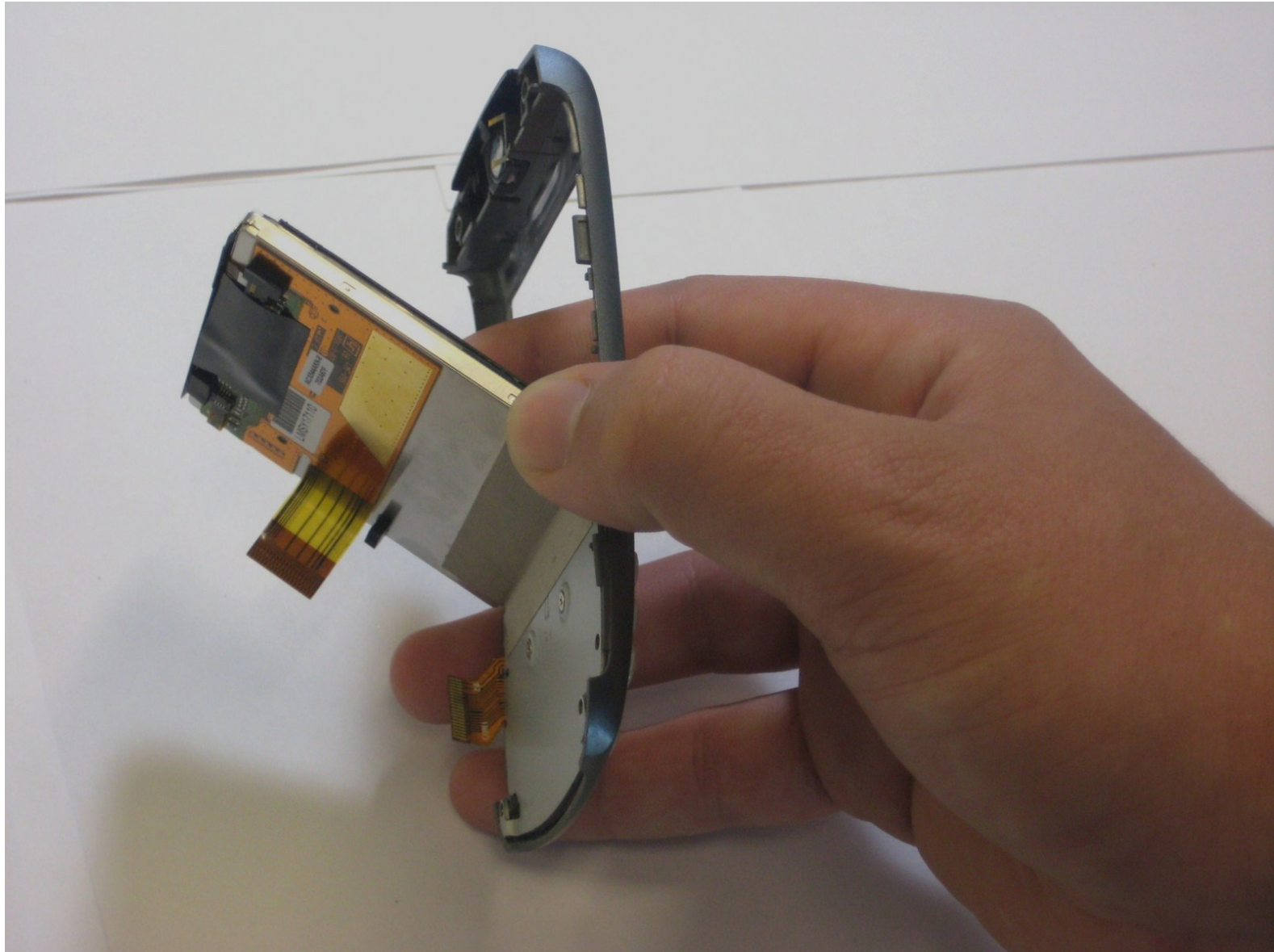




Palm Treo 680 screen replacement

Written By: Maiya123



INTRODUCTION

This guide shows how to repair a disfunctional Palm Treo 680 LCD Screen/Touch Screen.



TOOLS:

- [Phillips #00 Screwdriver](#) (1)
 - [Spudger](#) (1)
 - [Tweezers](#) (1)
-

Step 1 — Battery



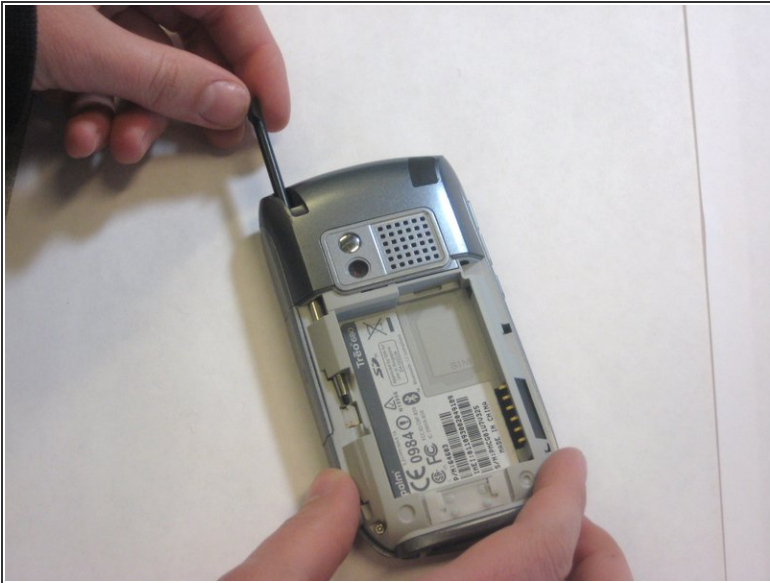
- Remove the battery cover by pressing on the small rectangular button located on the back of the phone.

Step 2



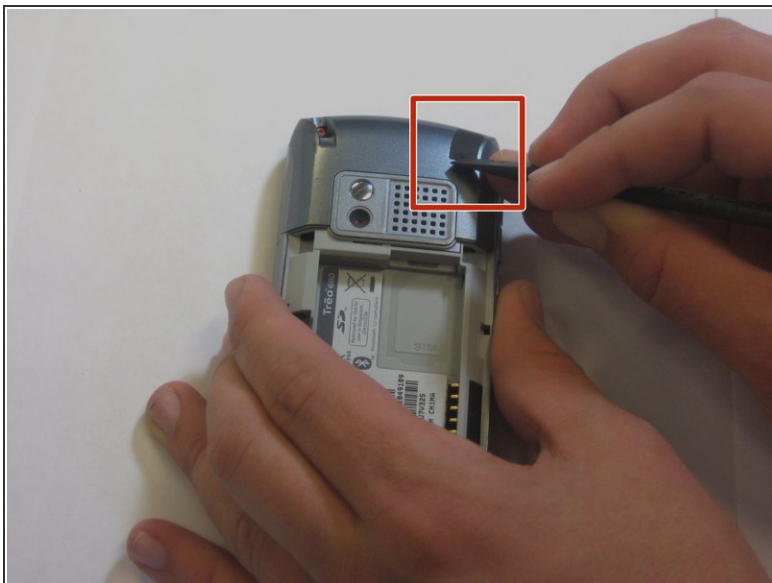
- Remove the battery by pulling it out towards you.

Step 3 — Back Panel



- Remove the stylus in order to access the screw.
- Remove the 27mm top-left screw using a T6 Torx screwdriver.

Step 4



- Using the spudger, remove the rubber rectangular cover located in the upper rear, right-hand corner.
- Remove the 27mm screw using the T6 Torx screwdriver.
 - ⓘ If there is a red Palm sticker covering this screw, puncture it to access the screw.

Step 5



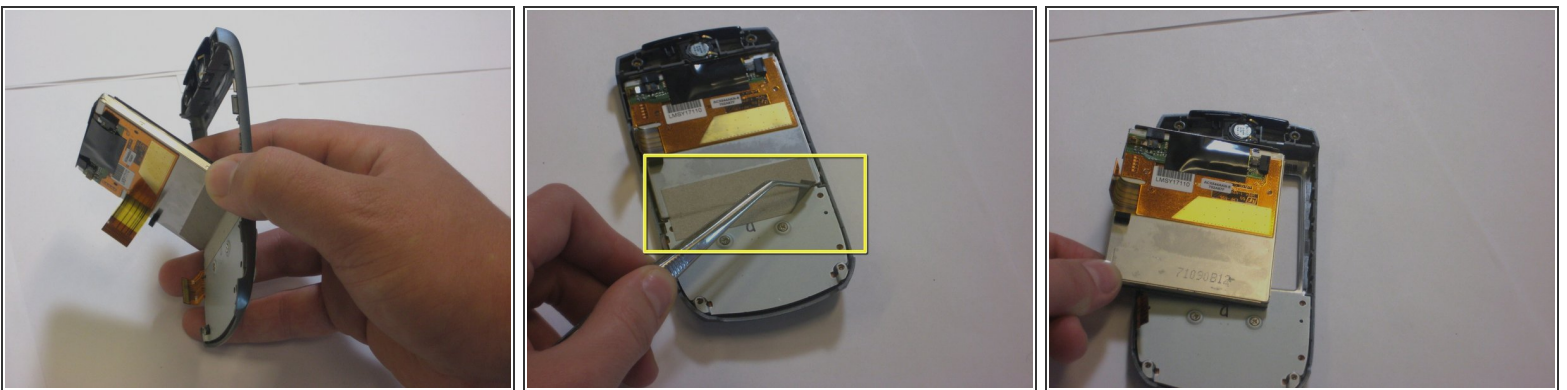
- Remove the remaining two 27mm screws from the bottom using the T6 screwdriver.

Step 6



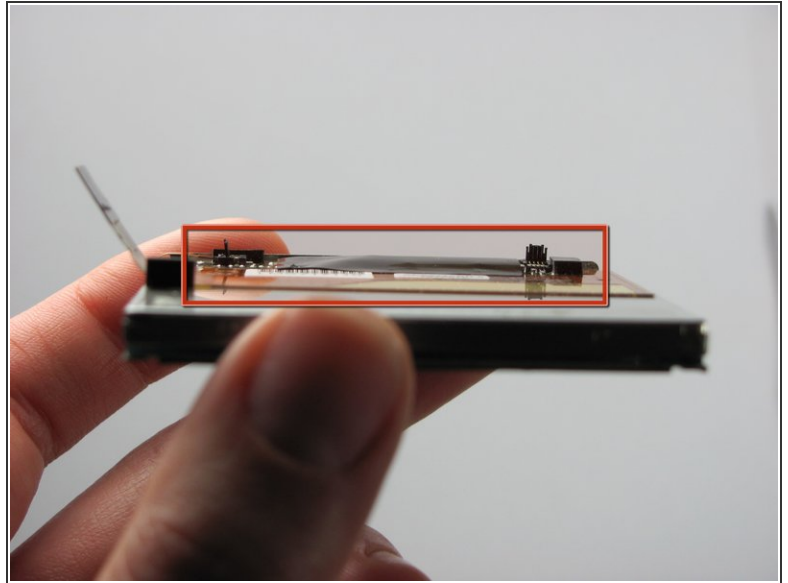
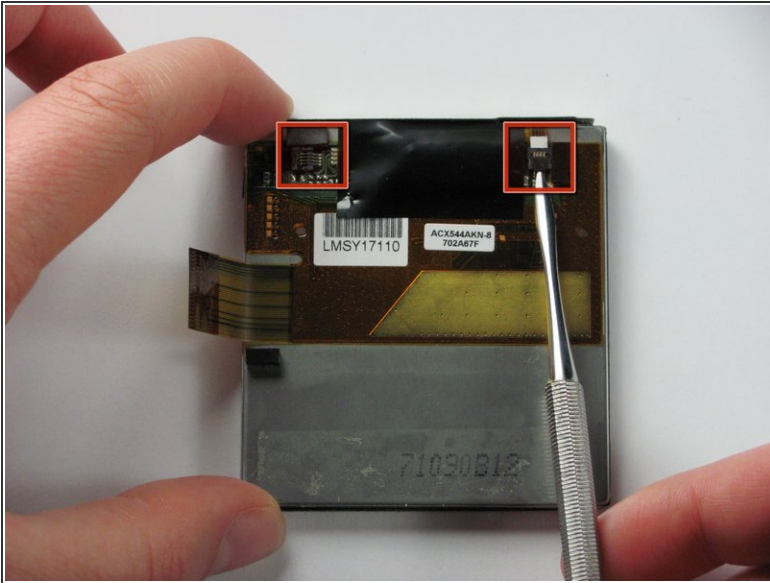
- Turn the phone so the screen is facing the right side.
 - Use a spudger to carefully separate the back panel from the front panel to access components inside the phone.
 - Separate the covers from the left side of the device as indicated in the picture.
- ⚠ The right side contains orange ribbons that are easily damaged.

Step 7 — LCD Screen and Touch Screen



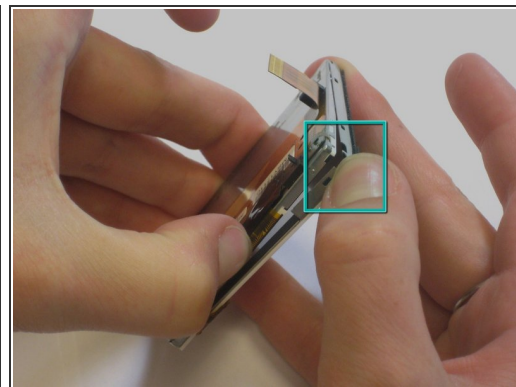
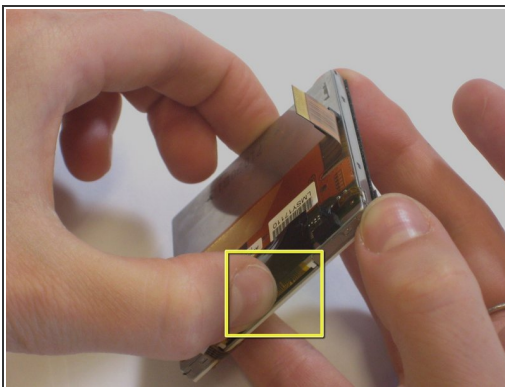
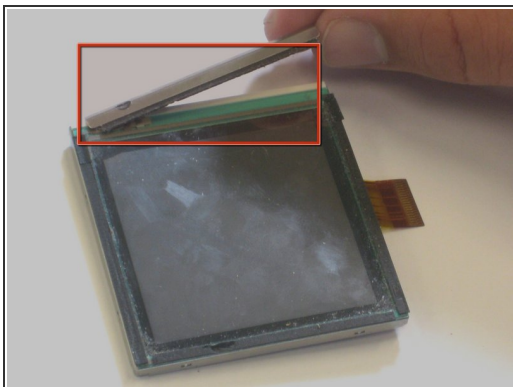
- Take the front the pannel and notice that the screen is attached by a piece of silver tape.
- Using a pair of tweezers, carefully peel off this piece of silver tape.
- Remove the screen from the front pannel.

Step 8



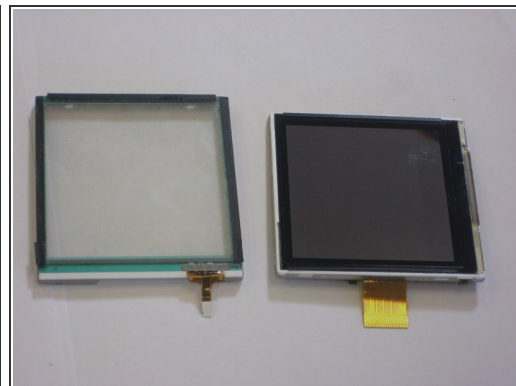
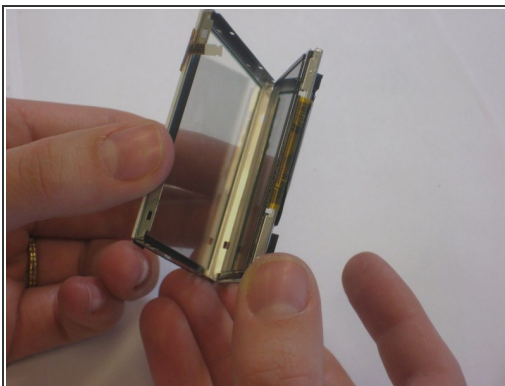
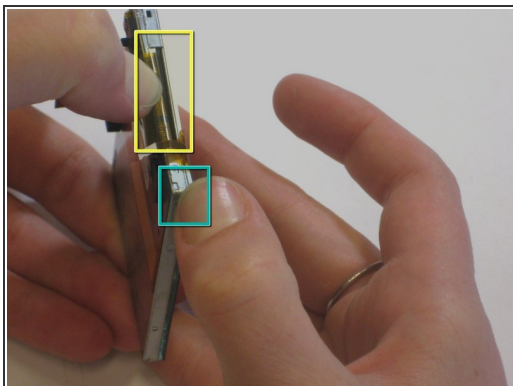
- Obtain a small metal spudger and flip up the 2 tiny plastic flaps that hold the tiny orange ribbons in place.
- Do the same thing for the other flap on the opposite side.

Step 9



- Flip the screen over a 180 degrees and take off the metal piece that cushions the screen.
 - Flip the screen over another a 180 degrees and place pressure on the bottom ribbon (Where my left thumb is).
 - Slightly Pull apart the touch screen from the LCD screen by placing your thumbs where my thumbs are. DO NOT PULL THE TWO SCREENS COMPLETELY APART YET.
- ☞ This part is tricky and might take some maneuvering and a little bit of force, but it is possible.

Step 10



- Move your thumbs to the other corner of the screen and repeat the same procedure in step 9.
- Carefully peel the touch screen away from the LCD screen.
- Now you should have both the touch screen and LCD screen detached from one another.

To reassemble your device, follow these instructions in reverse order.