



# Palm Treo 700P Motherboard Replacement

This installation guide shows you how to access the motherboard of your Palm Treo 700P.

Written By: Ivan



---

# INTRODUCTION

Follow this guide to gain access to your Treo's motherboard.

---



## TOOLS:

- [iFixit Opening Tools](#) (1)
  - [T5 Torx Screwdriver](#) (1)
  - [Spudger](#) (1)
-

## Step 1 — Battery



- Press the button located just above the Sprint™ logo and then slide the cover down.

## Step 2



- Use the small notch on the left hand side of the phone to remove the battery.

## Step 3 — Back Case



- Remove the stylus from the phone.

## Step 4



- After removing the battery and stylus, unscrew the 5 Torx screws (using a T-5 Torx screw driver)

## Step 5



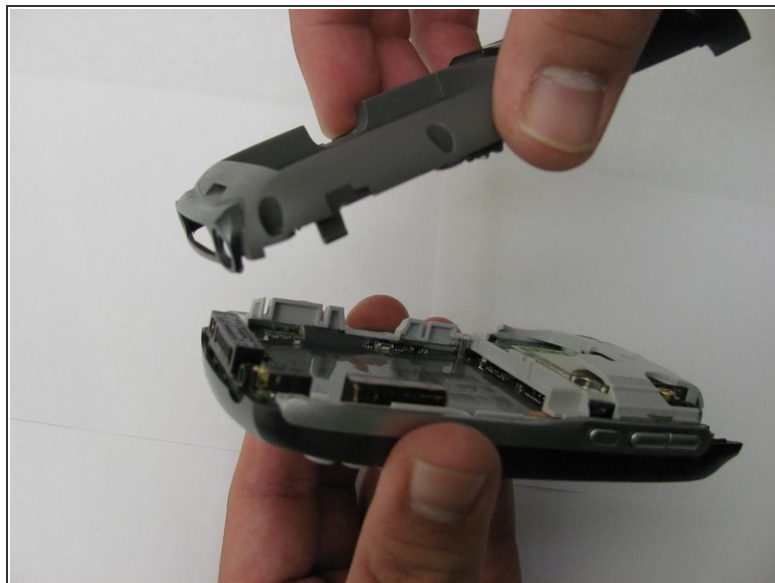
- Using the spudger, remove the small rubberized patch under the antenna.

## Step 6



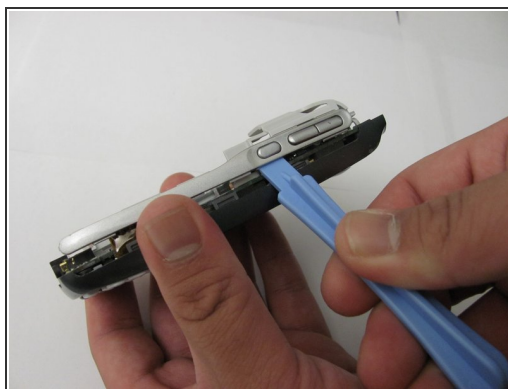
- Unscrew the last two screws using the previous screw driver.

## Step 7



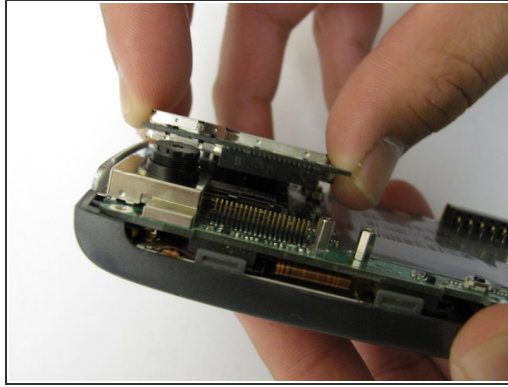
- Using the plastic opening tool, gently separate the back case from the phone body.

## Step 8 — Motherboard



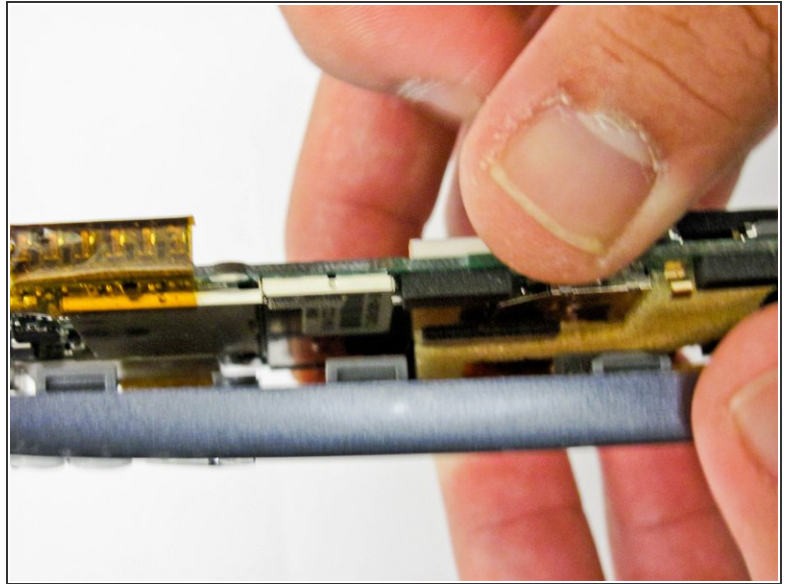
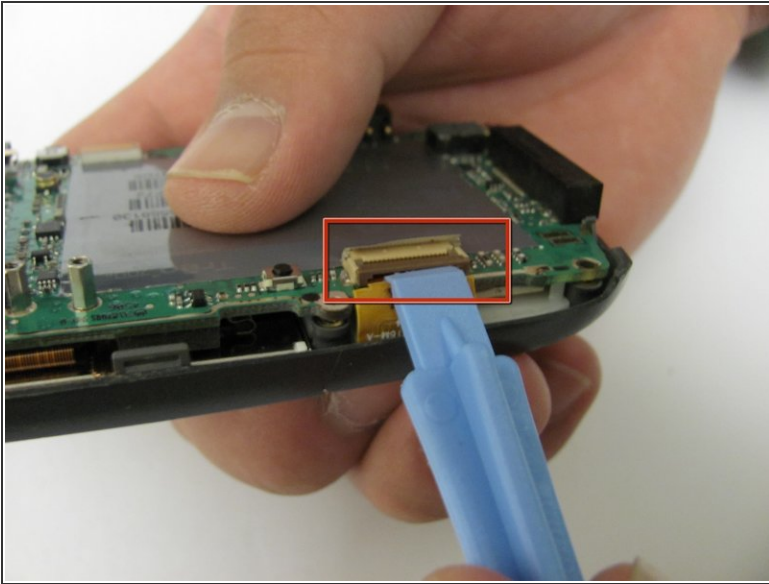
- Using a plastic opening tool, gently edge your way between the back and border case (Picture 2) until they are completely separated (Picture 3).

## Step 9



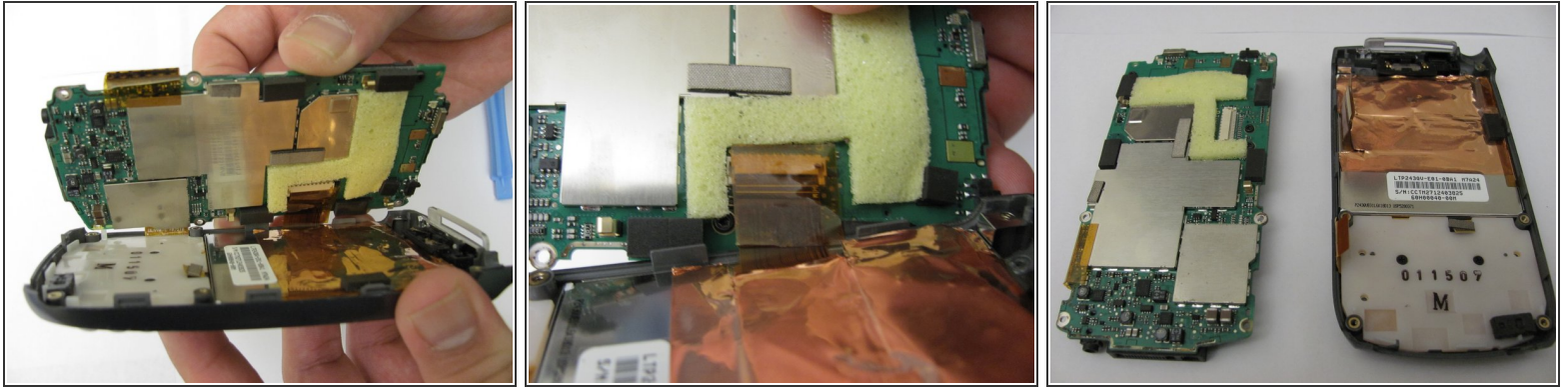
- Remove the antenna chip by unscrewing the two screws with Torx T-5 screwdriver (Picture 1).
- Once unscrewed, gently detach the antenna chip with your hands (Picture 2).

## Step 10



- Use the plastic opening tool to unlock the tab holding the keyboard connection (Picture 1).
- Once the keyboard connection is detached, use your hands to gently separate the motherboard from the back panel (Picture 2).

## Step 11



- To completely detach the motherboard from the back panel, use the plastic opening tool to unlock the LCD connection from the motherboard (Picture 2).
- Once the LCD connection is unlocked, the motherboard should now be completely detached from the back panel, keyboard, and LCD (Picture 3).

To reassemble your device, follow these instructions in reverse order.