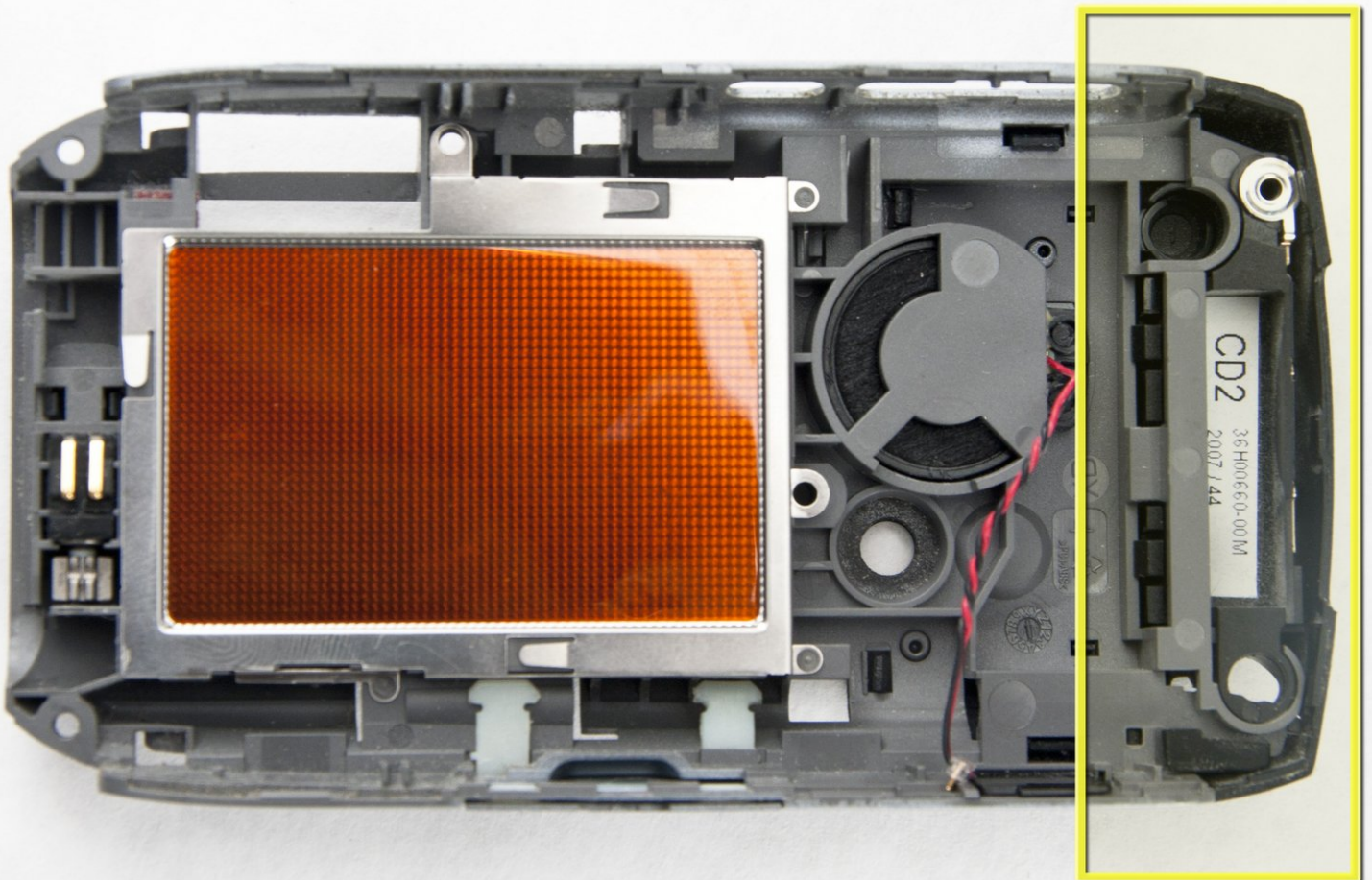




Palm Treo 755p Antenna Replacement

Remove Palm Treo 755p internal antennae.

Written By: Mike Shaw



INTRODUCTION

Once the back cover has been removed from the phone, 4 black clips will be popped off to reveal the antenna. Then it pops off.



TOOLS:

- [Flathead 3/32" or 2.5 mm Screwdriver](#) (1)
-

Step 1 — Battery



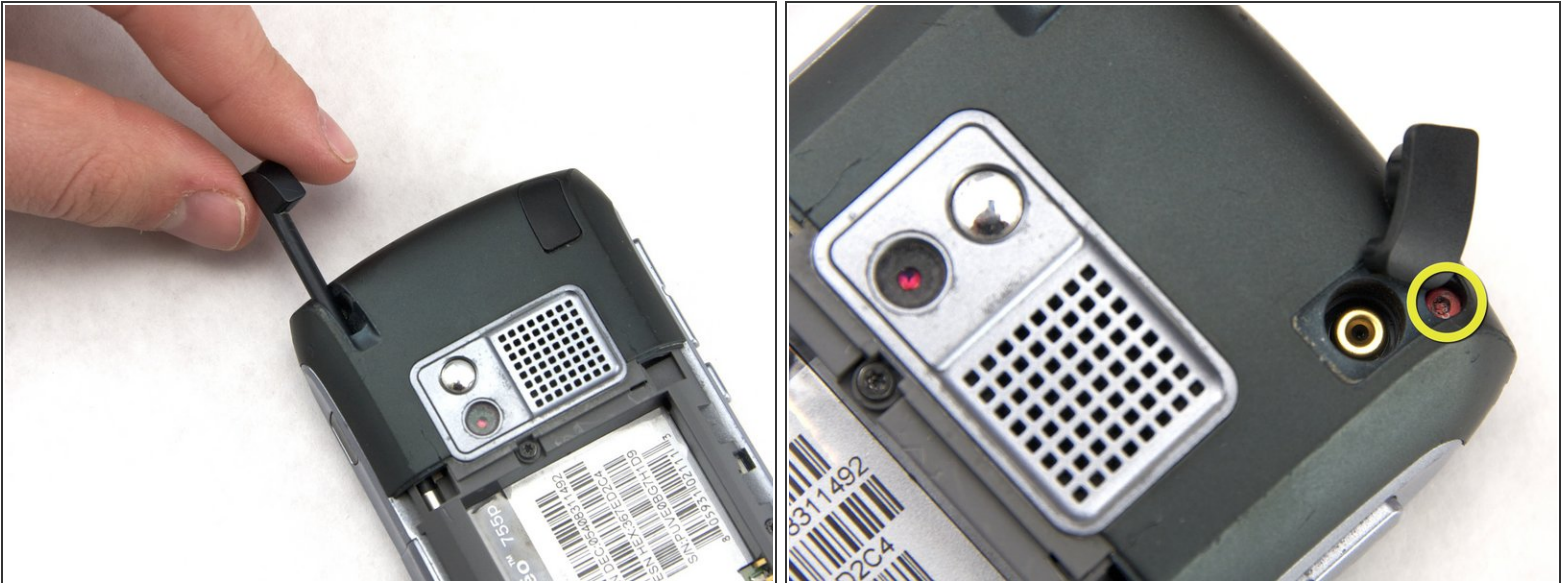
- Press the button on the back cover to release the battery cover.
- Slide off the battery cover.

Step 2



- Remove the battery by lifting up on one side.

Step 3 — Back Cover



- Remove the stylus by pulling up on the large top to reveal the top left case screw.
- Pull away the black flap to reveal the top right case screw.

Step 4



⚠ WARNING: The top right red screw marked by the red circle has a warranty seal. Removing this seal will void your warranty.

- Use the T5 screwdriver attachment to remove the 5 black back case screws marked by the red and yellow circles. These screws are 0.274 inches long.

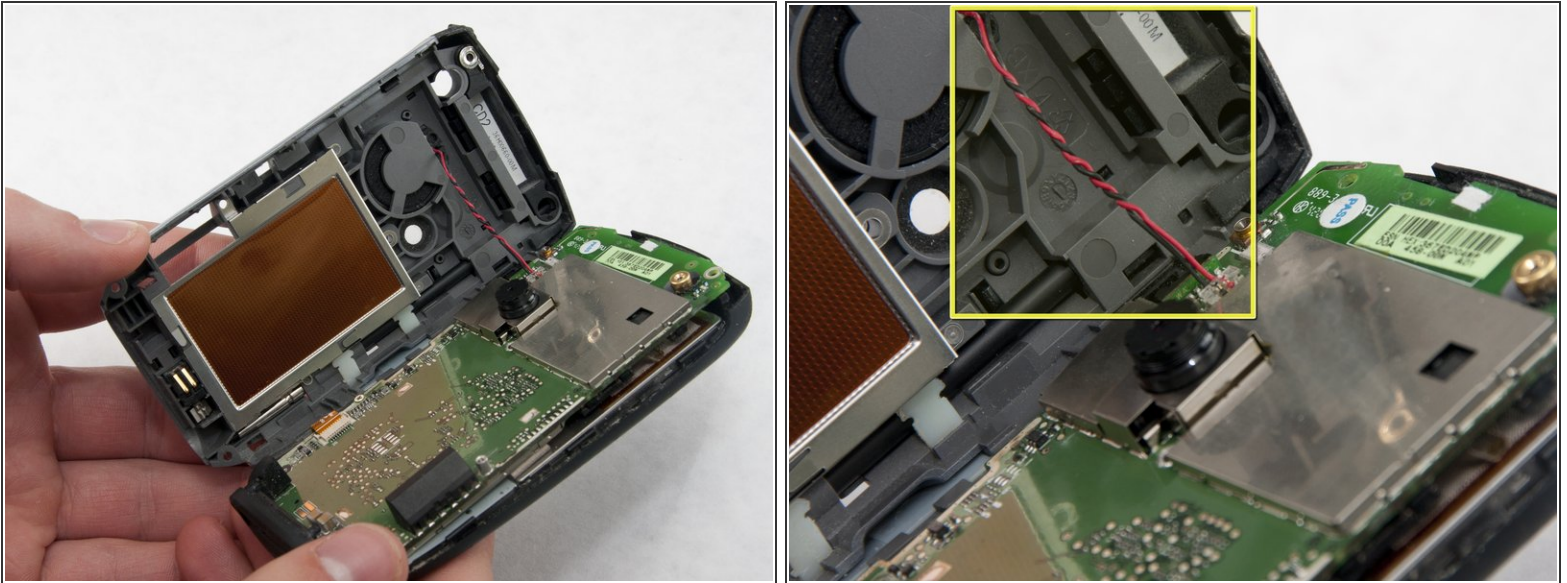
- Use the same T5 screwdriver attachment to remove the middle screw marked by the blue circle. It is shorter than the other screws at 0.121 inches in length.

Step 5



- Use the [plastic opening tool](#) to pry open the device. Start on the volume control side (left side of the screen) and work your way up along the edge and across the top.
- ⓘ ATTENTION: Side volume control buttons may fall out after opening the device.

Step 6



- Slowly unfold the back casing away from the front casing revealing the red and black wound wire speaker cable, marked by the yellow box.

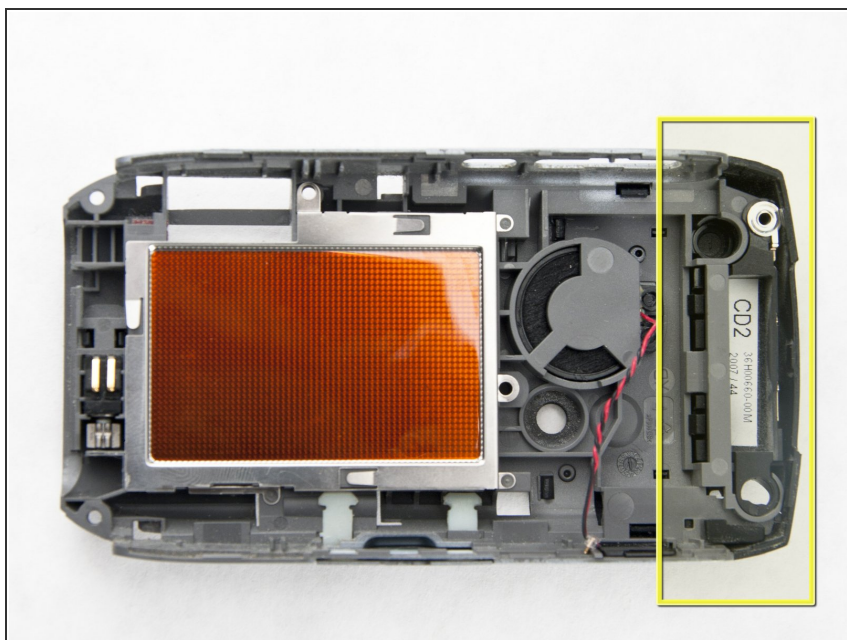
⚠ WARNING: Be gentle while separating the halves to prevent breaking the red and black wound wire speaker cable that bridges both halves.

Step 7



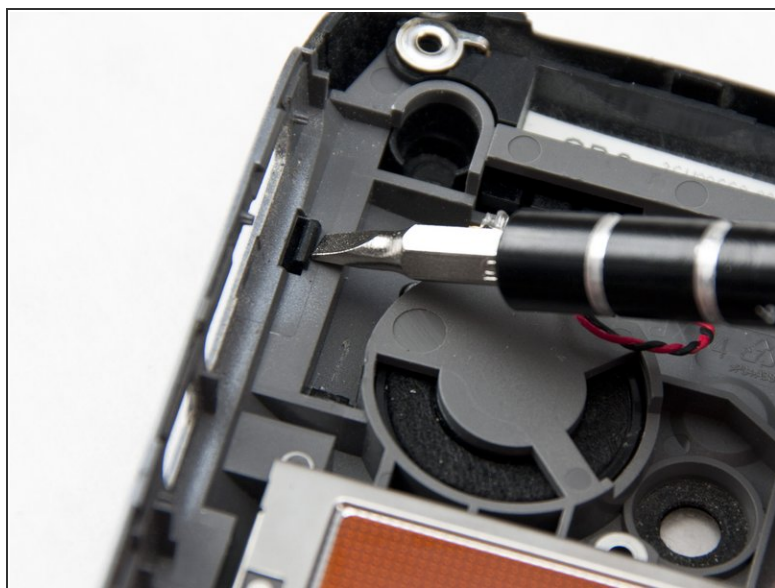
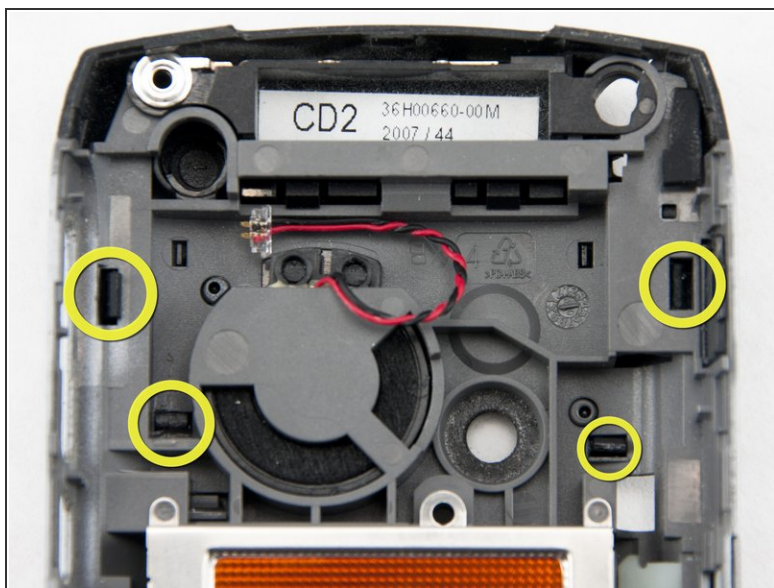
- Using tweezers, squeeze the plastic head of the black and red wound wire cable. This will detach the cable from the circuit board and fully separate the two halves.

Step 8 — Antenna



- The antenna is on the back half of the phone, and is marked by the yellow square.

Step 9



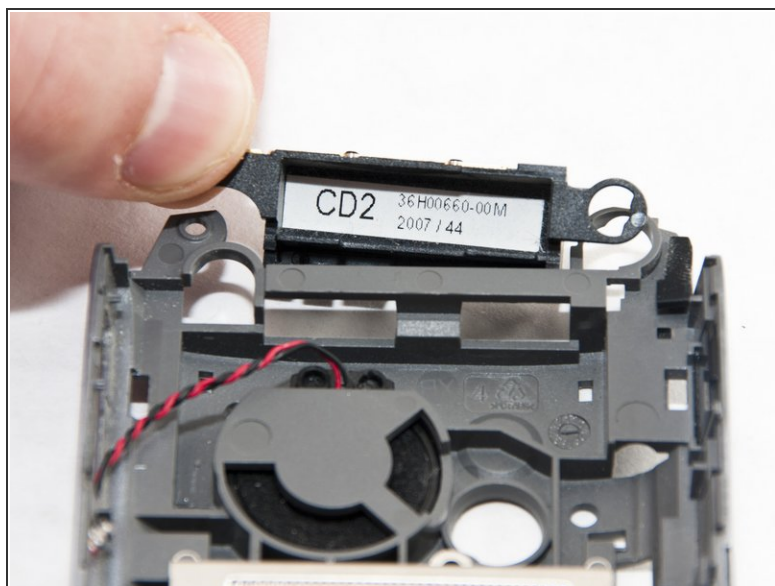
- Press in the four black clips using the 025 Flathead screwdriver attachment to pop off the upper--back cover.

Step 10



- Lift off the top of the back cover from the phone frame after undoing the clips.

Step 11



- Gently pop off the antenna by pulling it away from the back cover.

To reassemble your device, follow these instructions in reverse order.