



# Palm Treo 755p Back Cover Replacement

Remove the back cover of a Palm Treo 755p.

Written By: Mike Shaw



# INTRODUCTION

Remove the back cover to reveal internal components, such as the circuit board, keyboard and screen.



## TOOLS:

- [T5 Torx Screwdriver](#) (1)
  - [iFixit Opening Tools](#) (1)
-

## Step 1 — Battery



- Press the button on the back cover to release the battery cover.
- Slide off the battery cover.

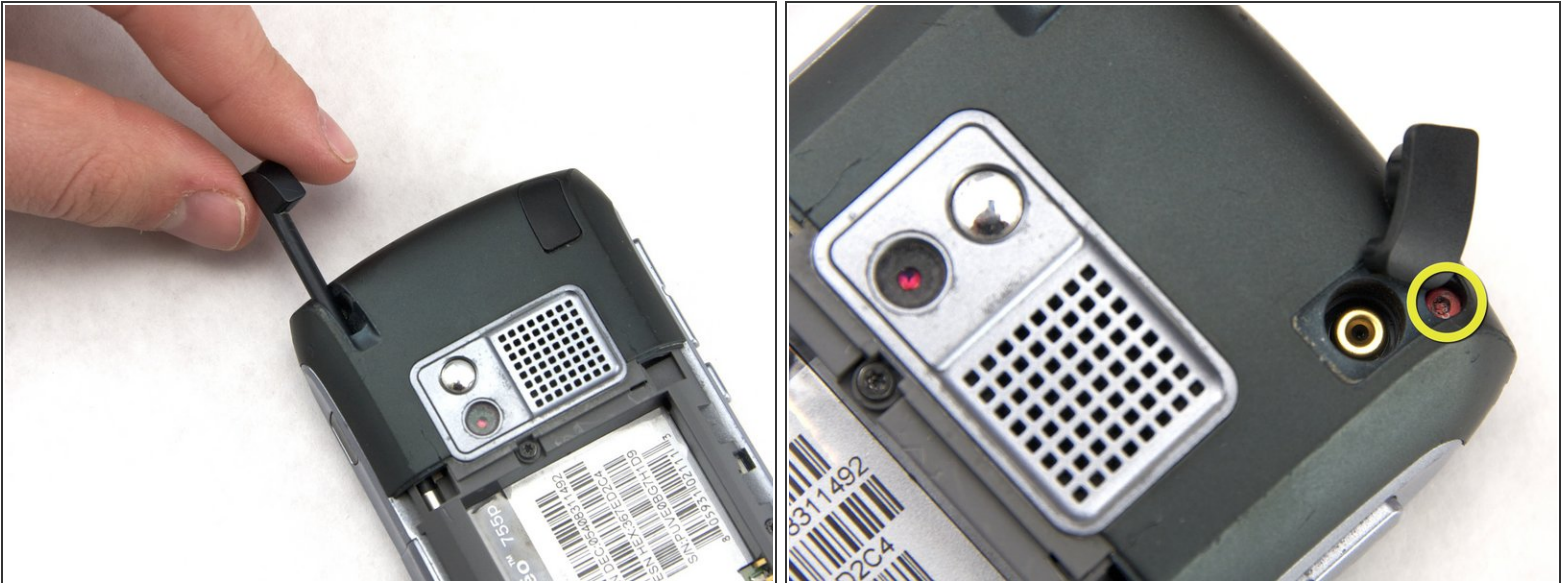
## Step 2



- Remove the battery by lifting up on one side.



### Step 3 — Back Cover



- Remove the stylus by pulling up on the large top to reveal the top left case screw.
- Pull away the black flap to reveal the top right case screw.

### Step 4



**⚠ WARNING:** The top right red screw marked by the red circle has a warranty seal. Removing this seal will void your warranty.

- Use the T5 screwdriver attachment to remove the 5 black back case screws marked by the red and yellow circles. These screws are 0.274 inches long.

- Use the same T5 screwdriver attachment to remove the middle screw marked by the blue circle. It is shorter than the other screws at 0.121 inches in length.

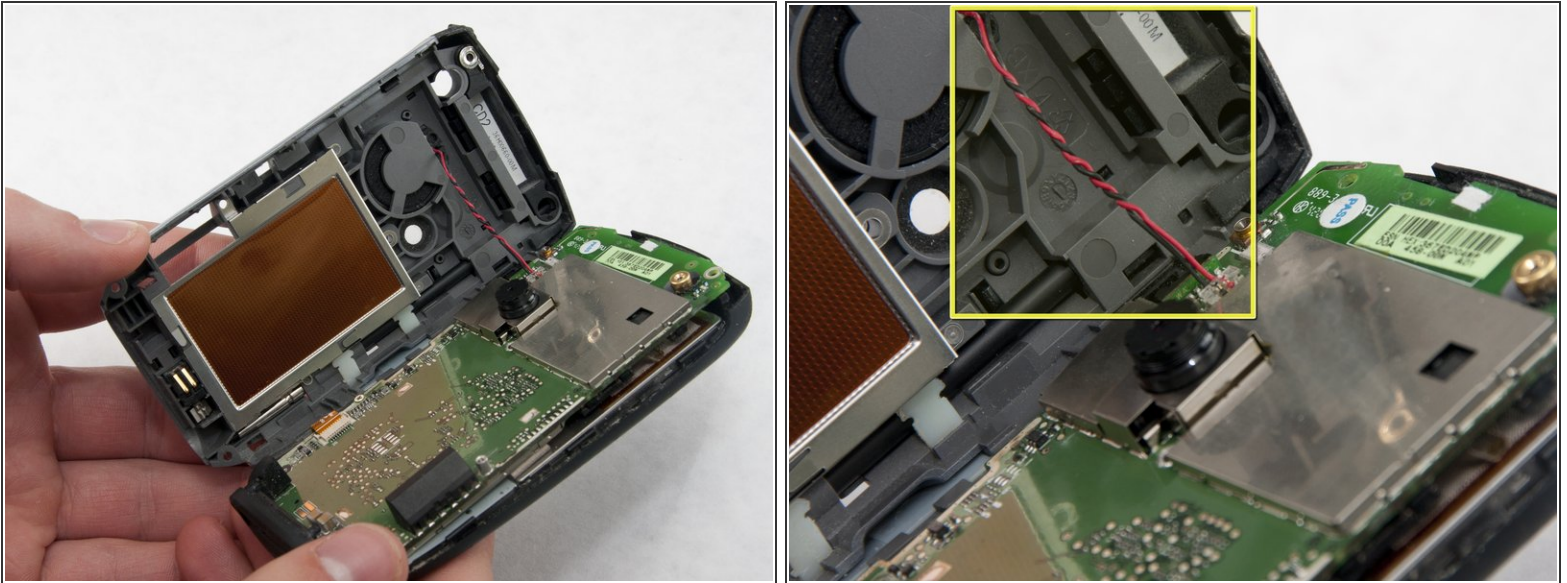
## Step 5



- Use the [plastic opening tool](#) to pry open the device. Start on the volume control side (left side of the screen) and work your way up along the edge and across the top.
- ⓘ ATTENTION: Side volume control buttons may fall out after opening the device.



## Step 6



- Slowly unfold the back casing away from the front casing revealing the red and black wound wire speaker cable, marked by the yellow box.

**⚠ WARNING:** Be gentle while separating the halves to prevent breaking the red and black wound wire speaker cable that bridges both halves.

## Step 7



- Using tweezers, squeeze the plastic head of the black and red wound wire cable. This will detach the cable from the circuit board and fully separate the two halves.

To reassemble your device, follow these instructions in reverse order.

This document was generated on 2019-09-17 02:18:27 PM (MST).

