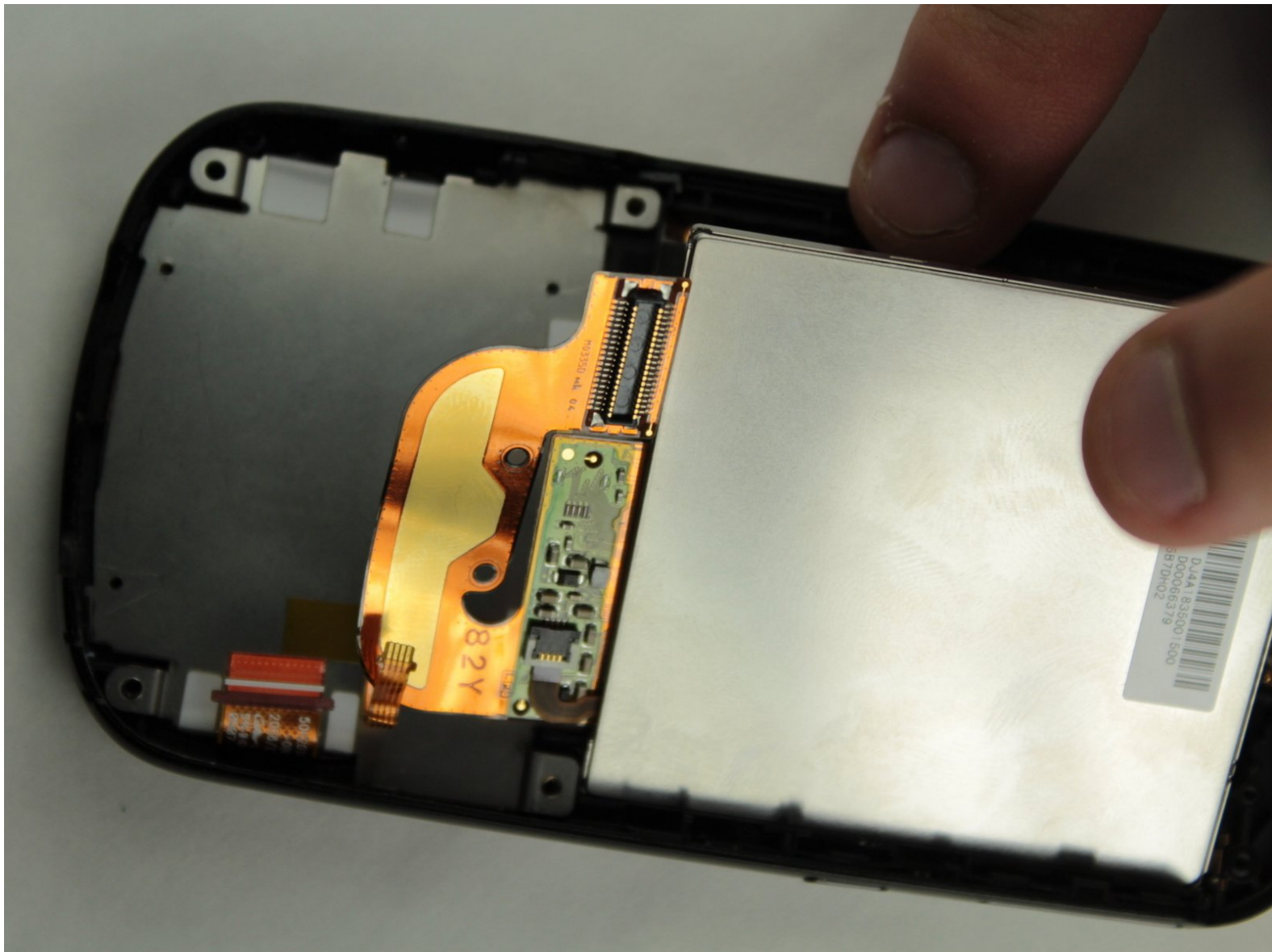




# Palm Treo Pro Display Glass Replacement

In this guide you will learn how to install the display glass into your Palm Treo Pro.

Written By: Kyle Gilbert



# INTRODUCTION

A guide to help you replace the screen in your Palm Treo Pro.



## TOOLS:

- [Phillips #00 Screwdriver](#) (1)
- [iFixit Opening Tools](#) (1)
- [Tweezers](#) (1)
- [T5 Torx Screwdriver](#) (1)



## PARTS:

- [Palm Treo Pro Display Glass](#) (1)

## Step 1 — Battery



- Press down and forward on the back case to slide it out of place and remove it

## Step 2



- If a battery is already installed, remove it by pulling up on the tab near the camera lens.
- Insert the new battery into the open rectangle. Make sure the battery is oriented so that the Palm logo is in the upper-left corner opposite the camera lens

## Step 3 — Motherboard



- Use the Torx T5 screwdriver to remove the 5 visible 6mm screws on the back of the phone.
- ⓘ Be careful not to misplace these screws as they are very small and will be important during reassembly.
- ⓘ If the screws are stripped a flat head screw driver may be necessary.

## Step 4



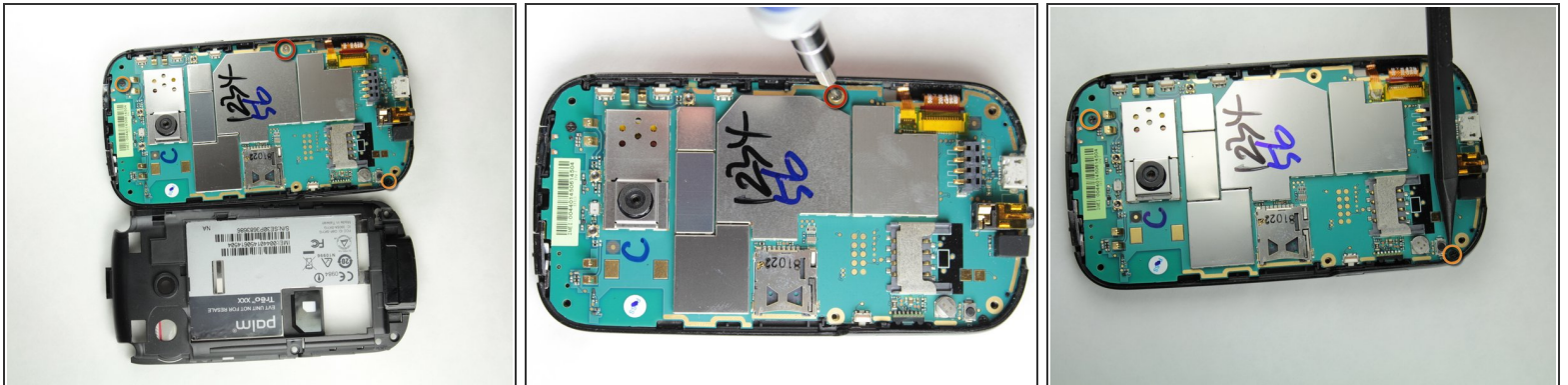
- Use a plastic opening tool to remove the small panel on the top of the phone by prying underneath the black plastic around the camera.

## Step 5



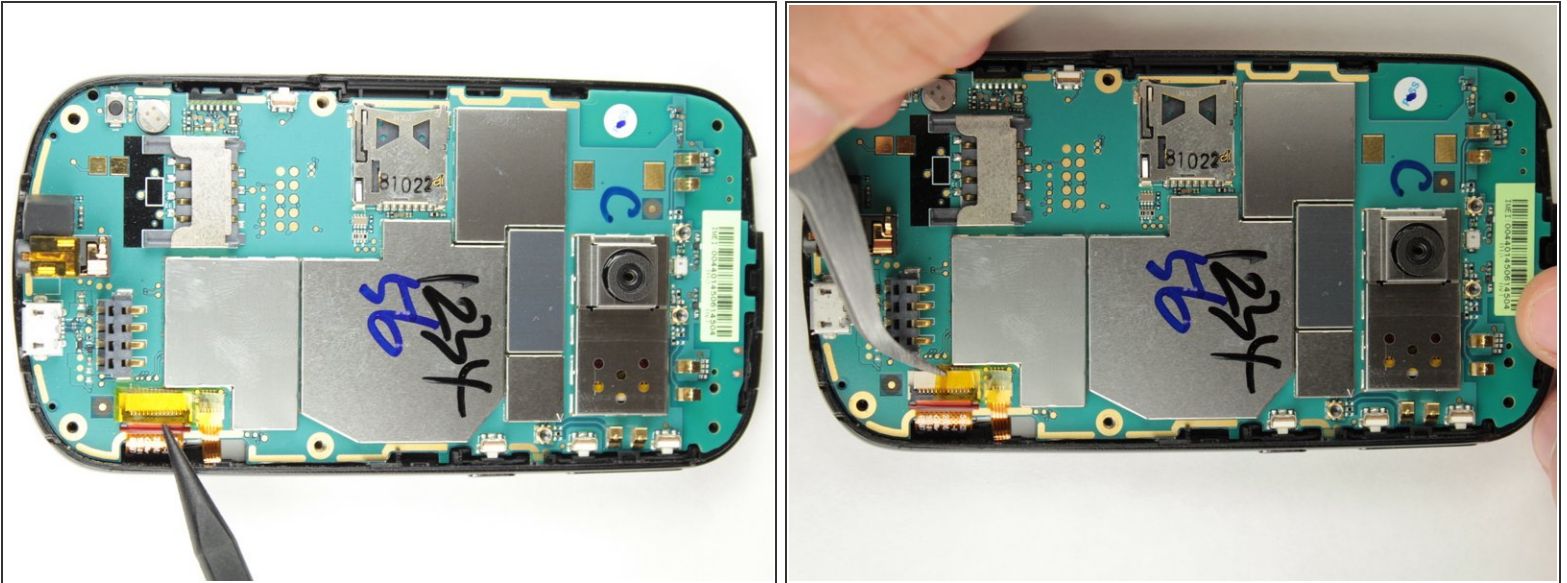
- Remove the main plastic body
  - Insert the plastic opening tool into the slot on the top (indicated by the spudger) and pry the black part off phone.
- ⓘ The bottom piece around the headphone and USB port may get caught during this step. Simply carefully maneuver the case until it is released.

## Step 6



- Use the Philips Head 00 screwdriver to unscrew the 3.5mm silver screw on the right hand side of the phone.
- Use the Philips Head 00 screwdriver to unscrew the two 3mm black screws in the upper right and lower left corners of the motherboard.

## Step 7



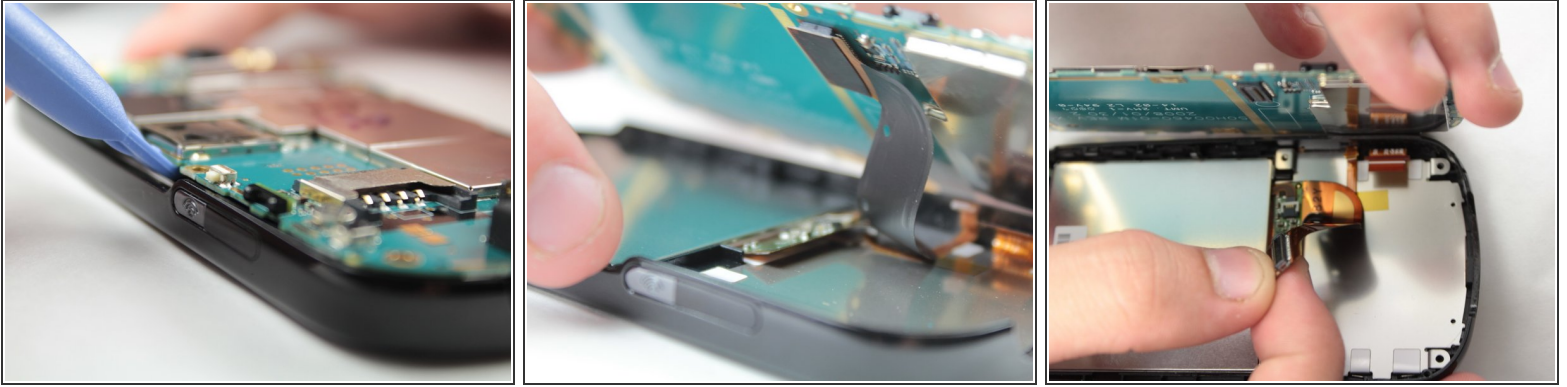
- Use tweezers to carefully remove the yellow piece of tape covering the two ribbon cables.

## Step 8



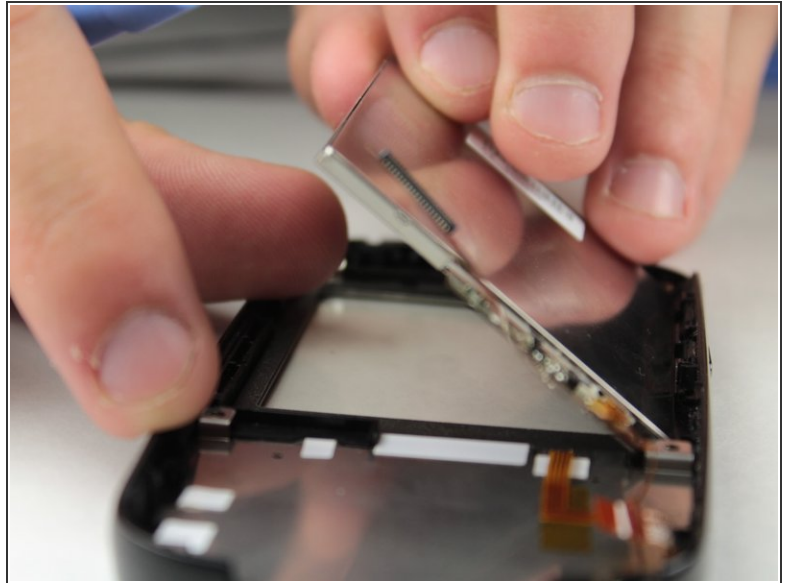
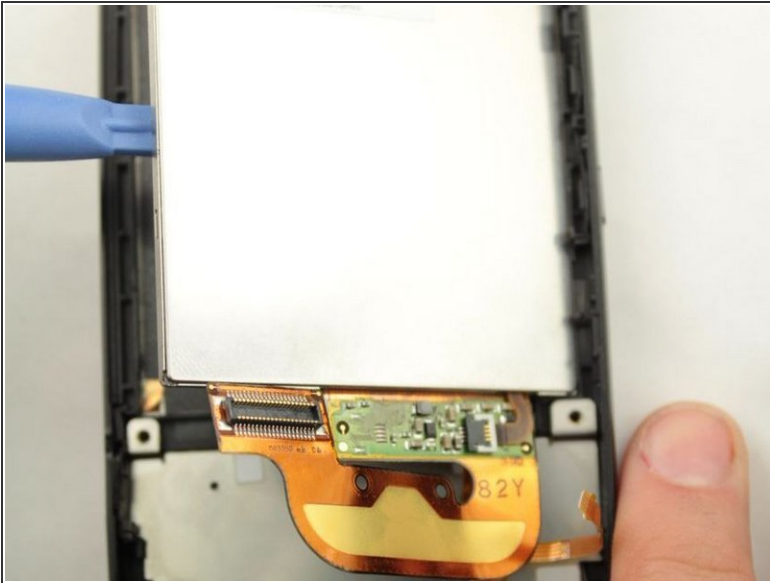
- There are two ribbon cables under the yellow tape.
- Use tweezers to safely unplug the small ribbon cable first and then the large ribbon cable.
- ❗ To remove the cables there is a small black lock that needs to be in the up position as indicated in picture two.

## Step 9



- Use a plastic opening tool to lift the motherboard up and out of the phone case
  - There is a black cable under the motherboard that must be disconnected while the motherboard is still in the phone
  - It can easily be disconnected with your fingers
- ⓘ Note: During this process the mute and power buttons may fall out of the phone. Do not panic this is completely normal. Set them aside in a safe place until reassembly.
- The motherboard has now been completely removed

## Step 10 — Display Glass



- Use the plastic opening tool to pry the side of the display glass up so you can easily remove it with your hand.
- ⓘ Note: The display glass is the metallic rectangle with a orange ribbon cable attached to it.

To reassemble your device, follow these instructions in reverse order.