



# Palm Treo Pro Teardown

Take apart your Treo Pro and see its guts!

Written By: AJ Fite



# INTRODUCTION

In this guide you will see the Palm Treo Pro fully torn down into its individual parts.



## TOOLS:

- [T5 Torx Screwdriver](#) (1)
  - [iFixit Opening Tools](#) (1)
  - [Phillips #00 Screwdriver](#) (1)
  - [Tweezers](#) (1)
-

## Step 1 — Battery



- Press down and forward on the back case to slide it out of place and remove it

## Step 2



- If a battery is already installed, remove it by pulling up on the tab near the camera lens.
- Insert the new battery into the open rectangle. Make sure the battery is oriented so that the Palm logo is in the upper-left corner opposite the camera lens



## Step 3 — Motherboard



- Use the Torx T5 screwdriver to remove the 5 visible 6mm screws on the back of the phone.
- ⓘ Be careful not to misplace these screws as they are very small and will be important during reassembly.
- ⓘ If the screws are stripped a flat head screw driver may be necessary.

## Step 4



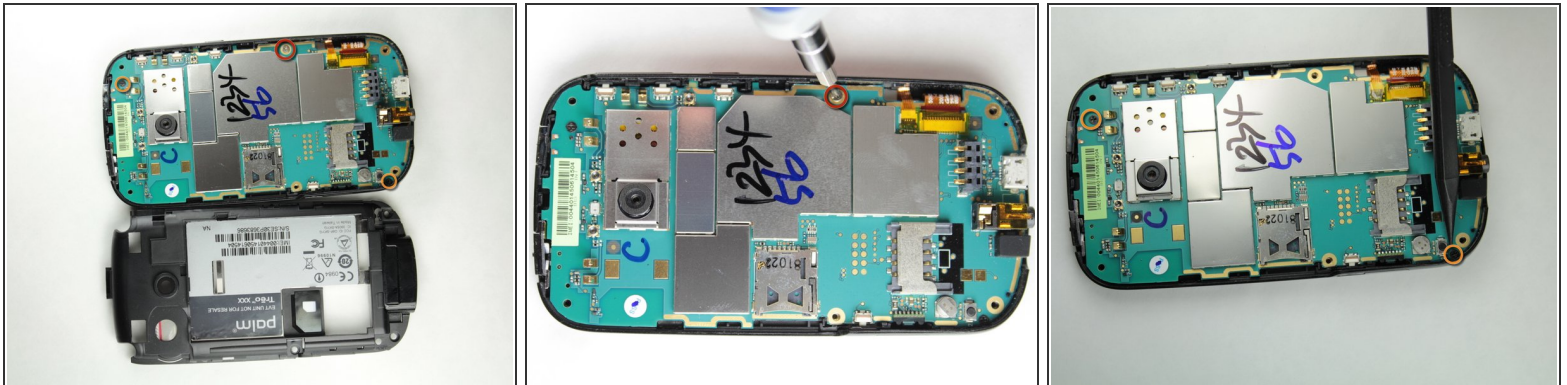
- Use a plastic opening tool to remove the small panel on the top of the phone by prying underneath the black plastic around the camera.

## Step 5



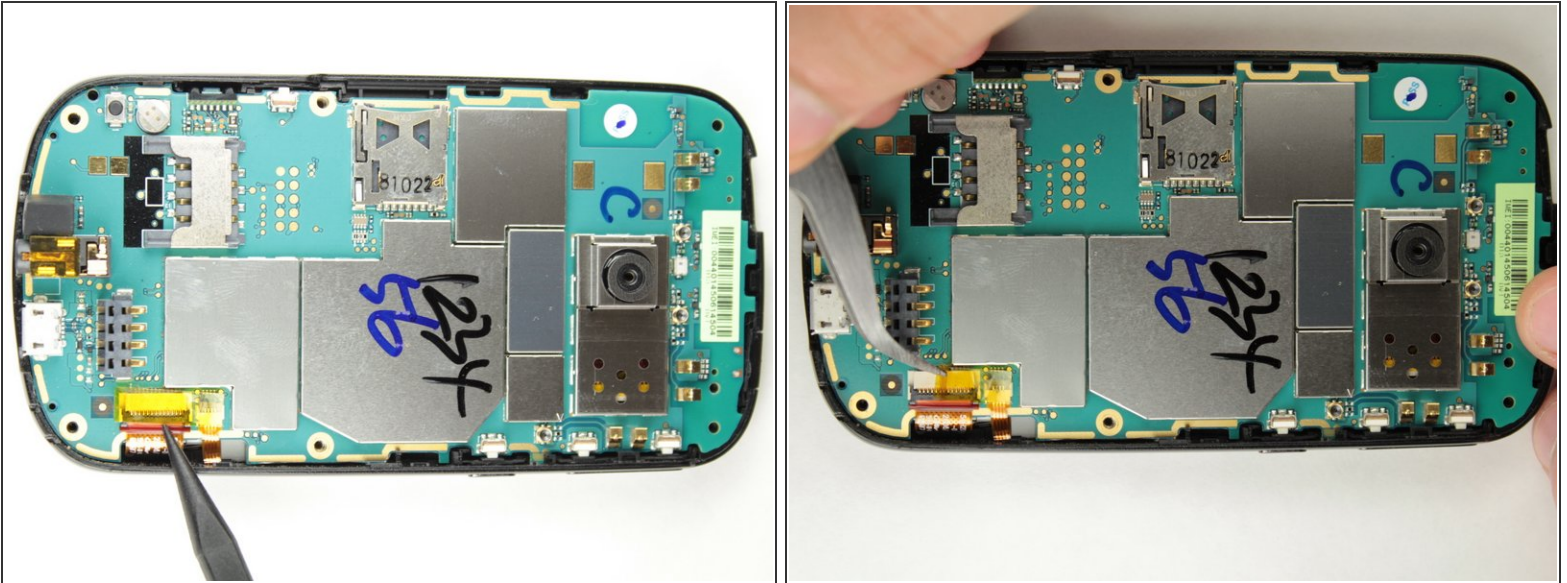
- Remove the main plastic body
  - Insert the plastic opening tool into the slot on the top (indicated by the spudger) and pry the black part off phone.
- ⓘ The bottom piece around the headphone and USB port may get caught during this step. Simply carefully maneuver the case until it is released.

## Step 6



- Use the Philips Head 00 screwdriver to unscrew the 3.5mm silver screw on the right hand side of the phone.
- Use the Philips Head 00 screwdriver to unscrew the two 3mm black screws in the upper right and lower left corners of the motherboard.

## Step 7



- Use tweezers to carefully remove the yellow piece of tape covering the two ribbon cables.

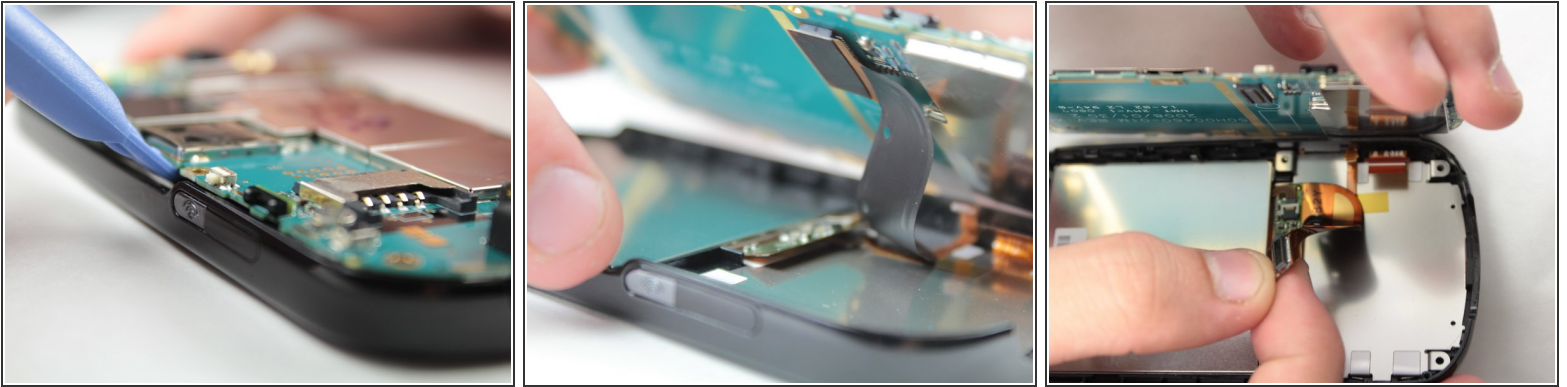
## Step 8



- There are two ribbon cables under the yellow tape.
- Use tweezers to safely unplug the small ribbon cable first and then the large ribbon cable.
- ❗ To remove the cables there is a small black lock that needs to be in the up position as indicated in picture two.

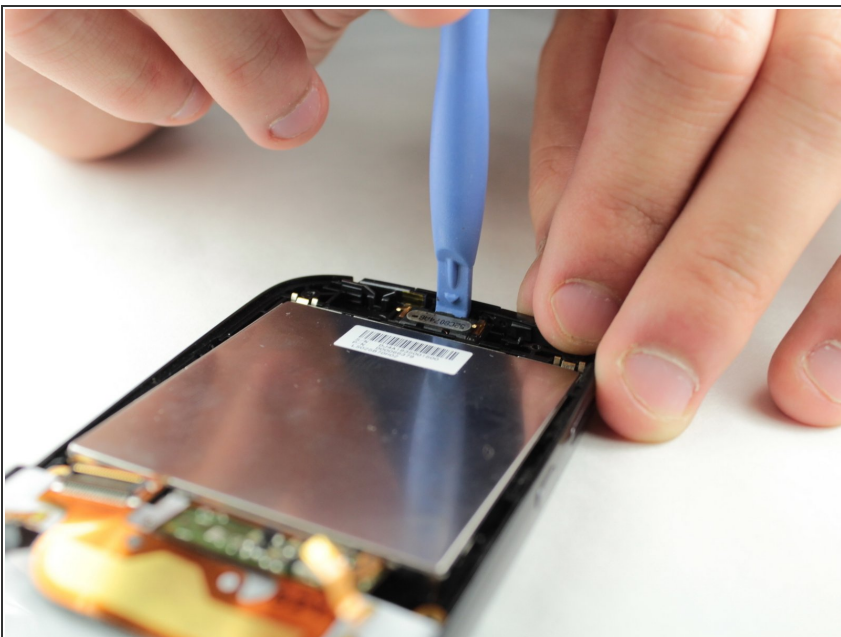


## Step 9



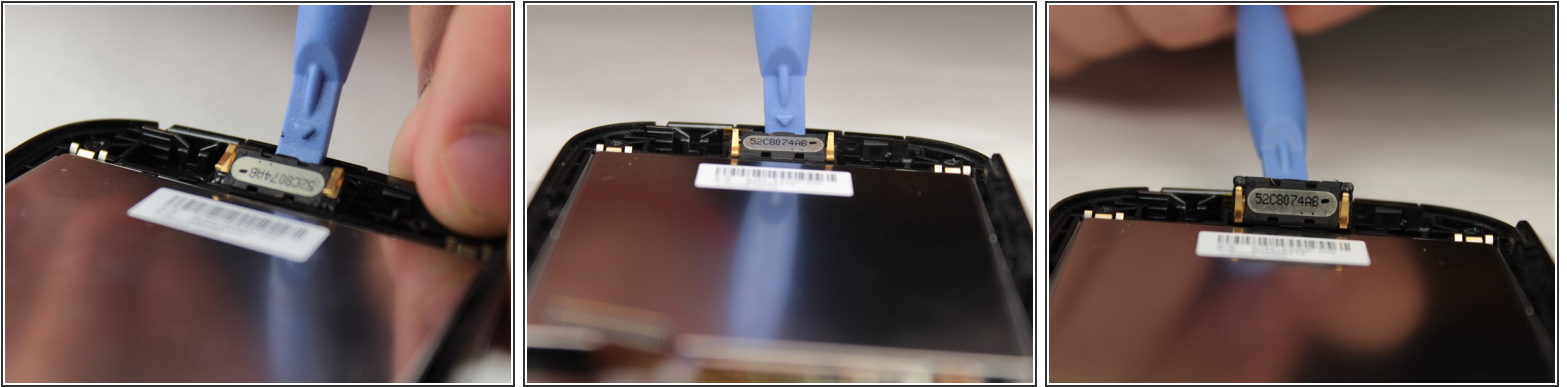
- Use a plastic opening tool to lift the motherboard up and out of the phone case
  - There is a black cable under the motherboard that must be disconnected while the motherboard is still in the phone
  - It can easily be disconnected with your fingers
- ⓘ Note: During this process the mute and power buttons may fall out of the phone. Do not panic this is completely normal. Set them aside in a safe place until reassembly.
- The motherboard has now been completely removed

## Step 10 — Speaker



- Insert your plastic pry in the gap at the top of the phone above the speaker.

## Step 11



- Gently pry the speaker until it comes out of its holder. This should not take a lot of force to do.

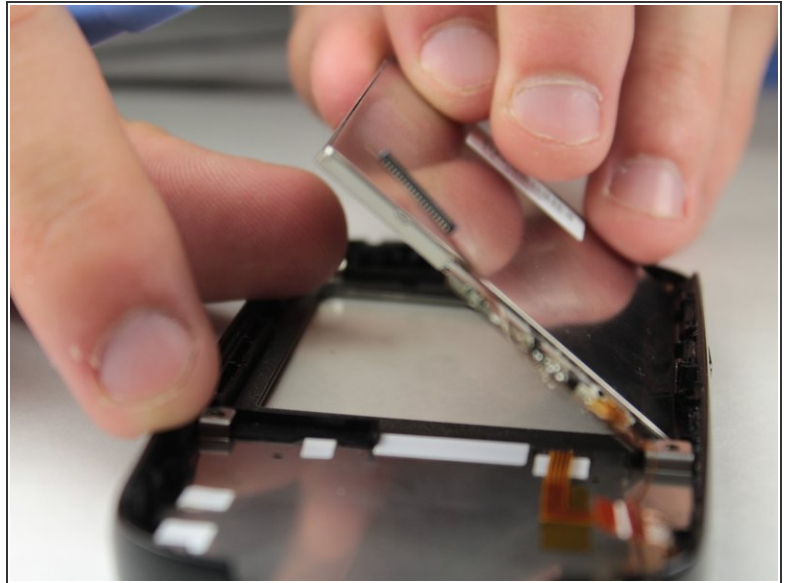
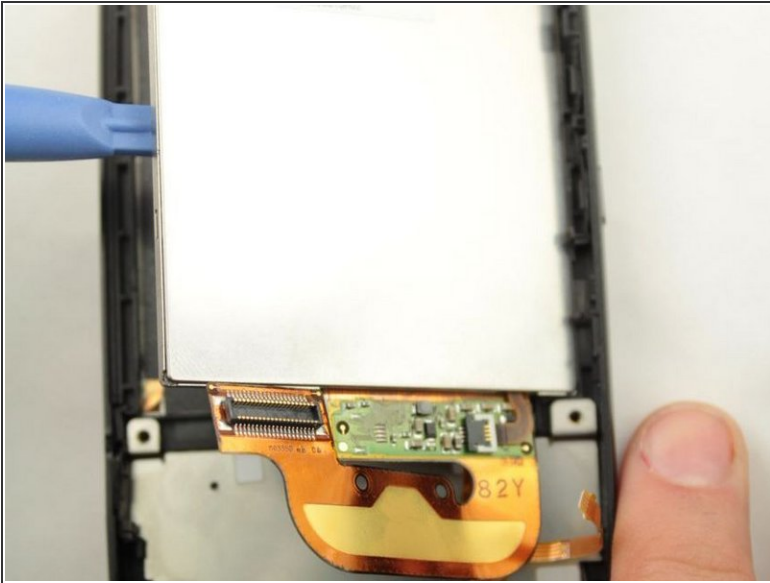
## Step 12



- The speaker can be gently lifted off the phone and set aside for cleaning, repair, or replacement.

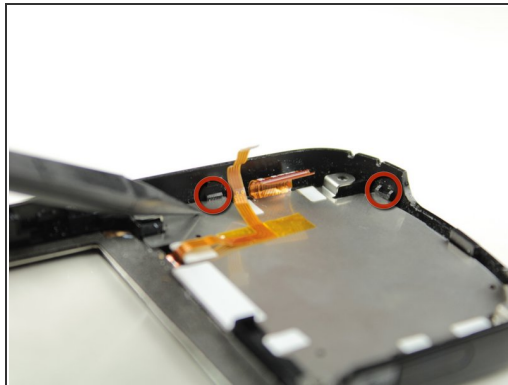
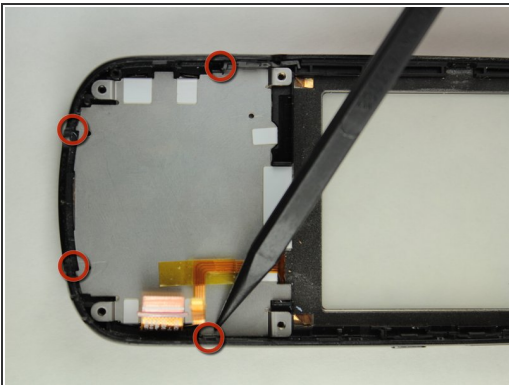


## Step 13 — Display Glass



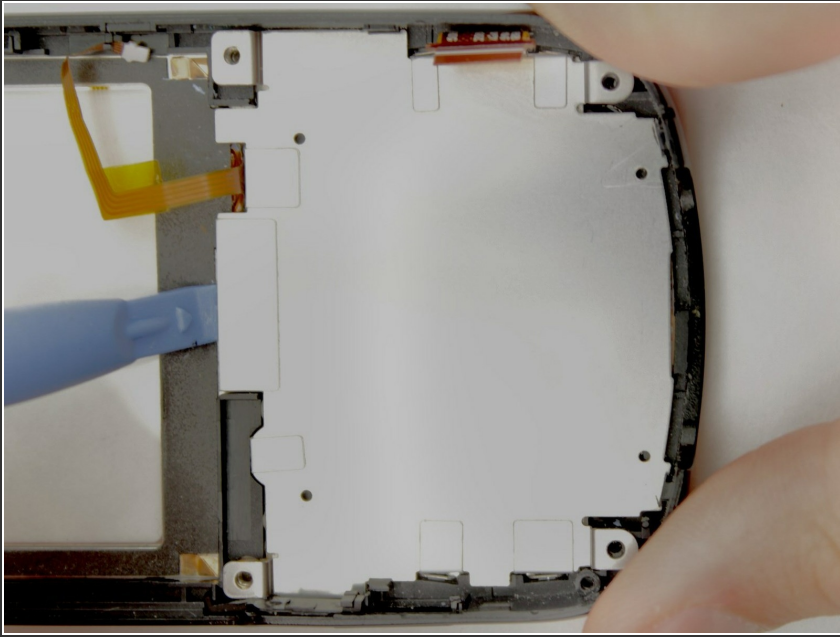
- Use the plastic opening tool to pry the side of the display glass up so you can easily remove it with your hand.
- ⓘ Note: The display glass is the metallic rectangle with a orange ribbon cable attached to it.

## Step 14 — Keyboard



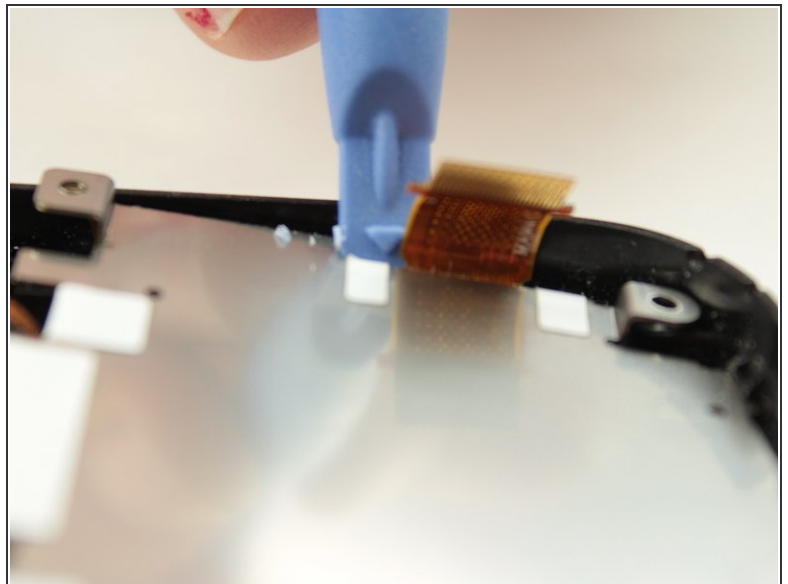
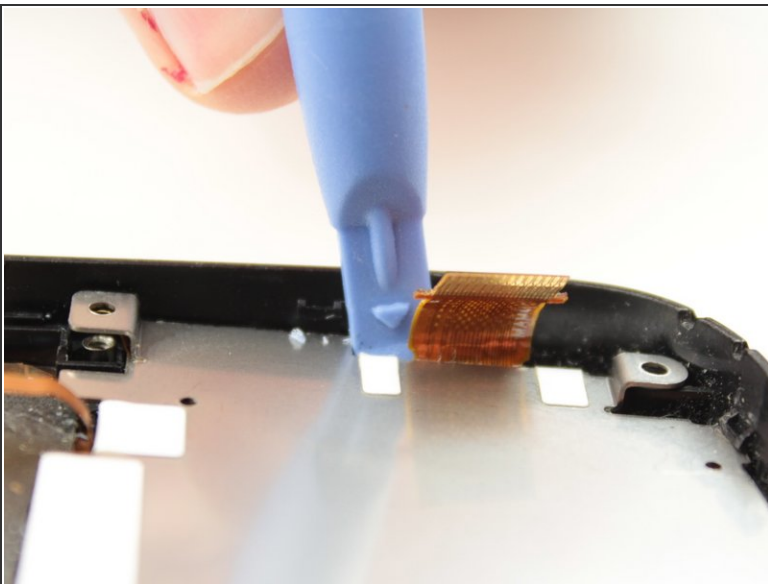
- Locate the four tabs above the keyboard. The following steps will demonstrate how to remove the metal plate from the tabs, which will reveal the keyboard.

## Step 15



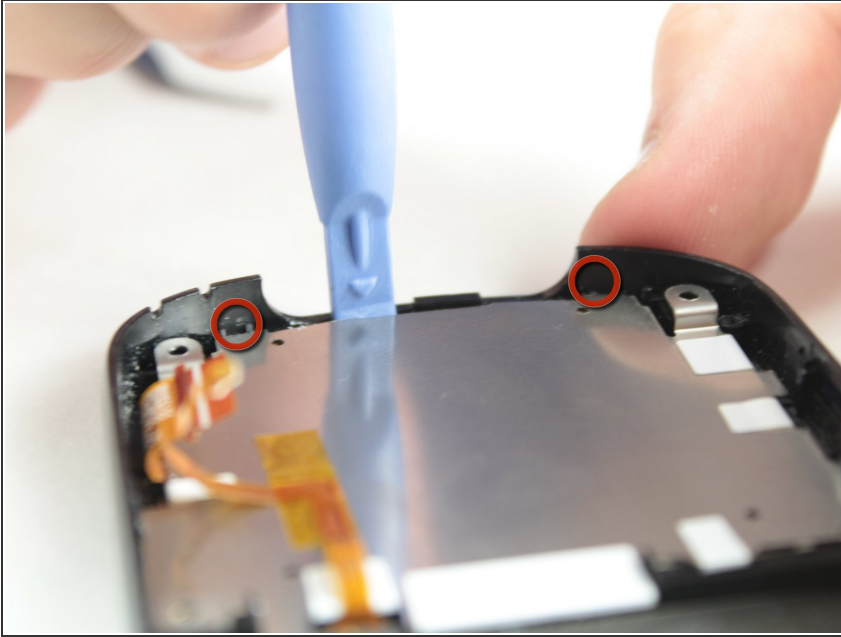
- Insert plastic opening tool as shown and lift up to remove from tabs. You should hear a 'pop' and then feel the plate become loose.

## Step 16



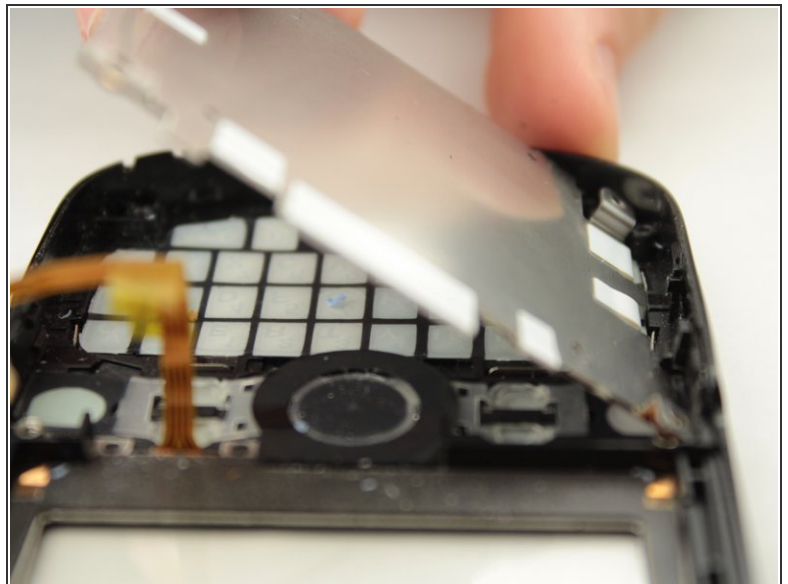
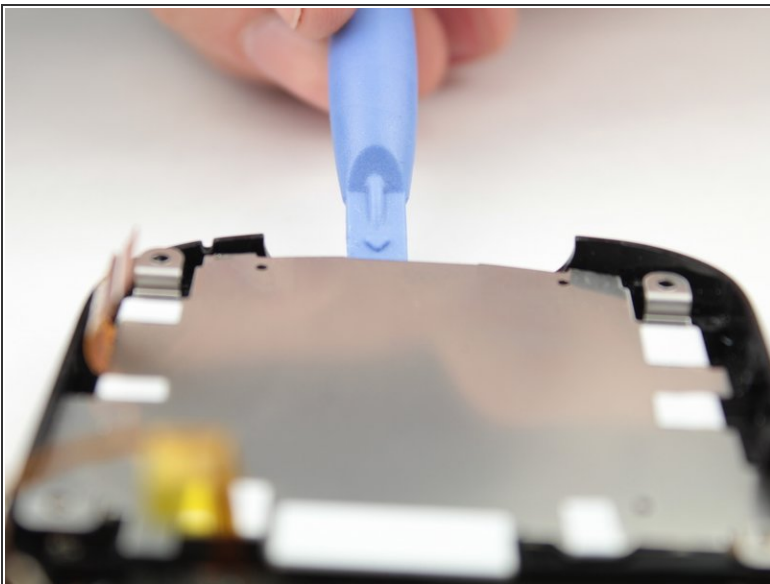
- Insert plastic opening tool as shown and lift up to dislodge plate from tab.

## Step 17



- Insert the plastic opening tool between the metal plate and the bottom of the phone as shown. Note that for this step, inserting the plastic opening tool between the two circled tabs as shown will remove the plate from both of the tabs.

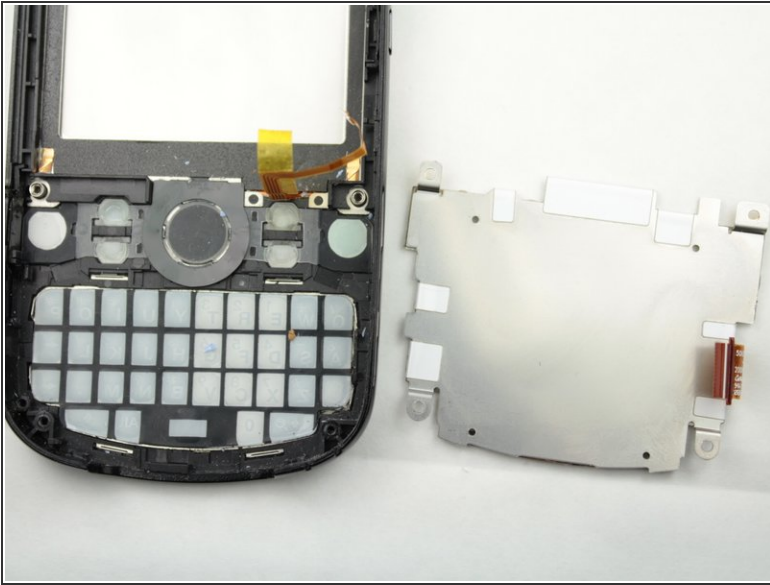
## Step 18



- The metal plate should now be loose enough to where one can remove the metal plate with either the plastic opening tool or with one's hands. Remove the metal plate and the keyboard beneath it can be easily removed.



## Step 19



- Rotate the phone cover so that the face of the cover is facing up as shown in picture two. The keyboard should fall out from the keyboard holes.

## Step 20 — Palm Treo Pro Teardown



- You have successfully torndown your device!

To reassemble your device, follow these instructions in reverse order.

This document was generated on 2019-10-16 11:01:09 PM (MST).

