



Palm Zire 21 Screen Replacement

How to replace a screen on a Palm Zire 21.

Written By: Jeremy Craft



INTRODUCTION

Use this guide to replace a screen on a Palm Zire 21



TOOLS:

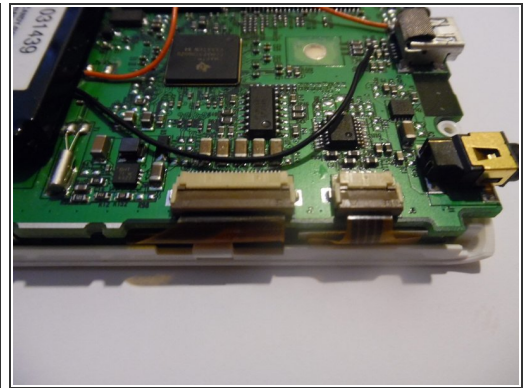
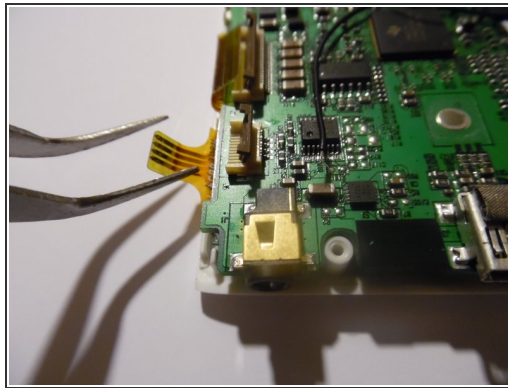
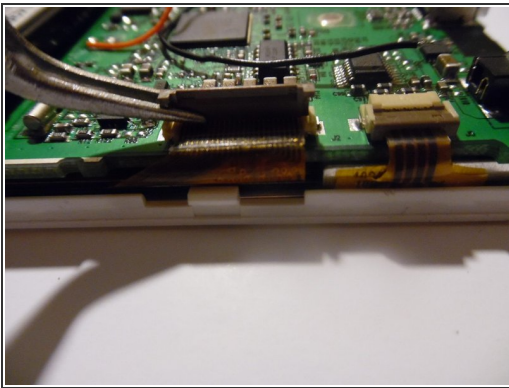
- [Pro Tech Toolkit](#) (1)
-

Step 1 — Screen



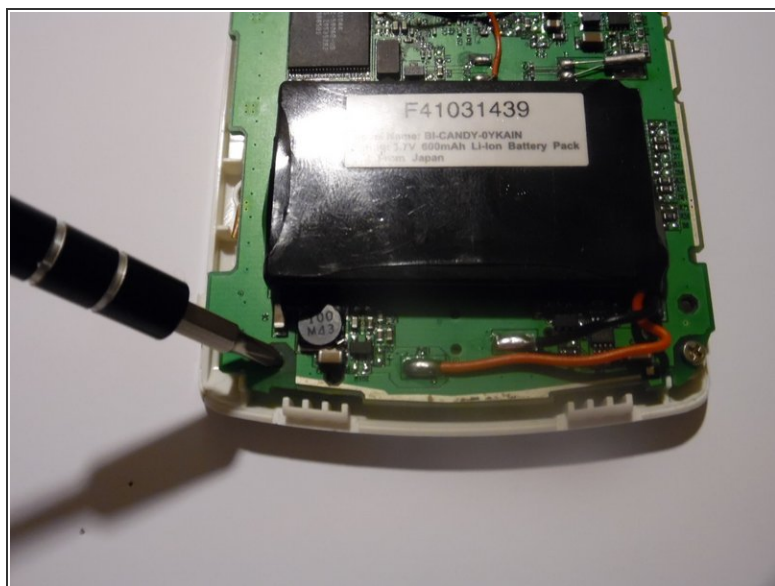
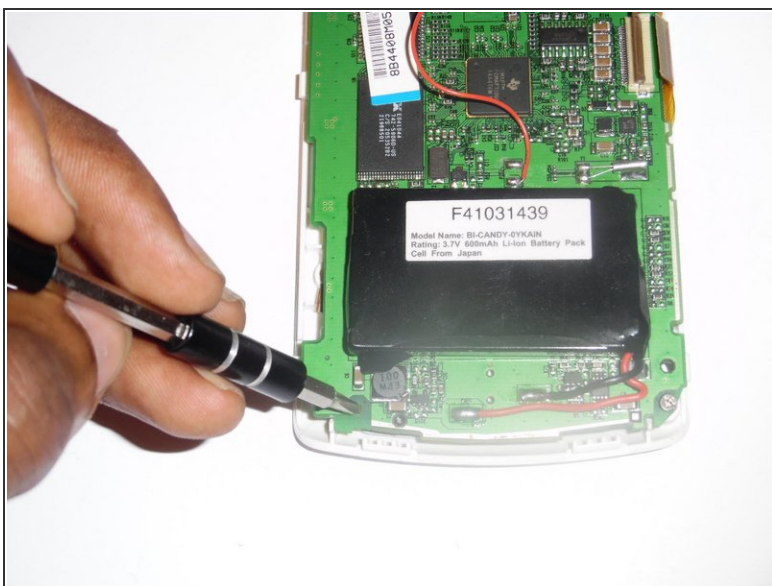
- Remove the two 0.8mm screws located on the back of the device.

Step 2



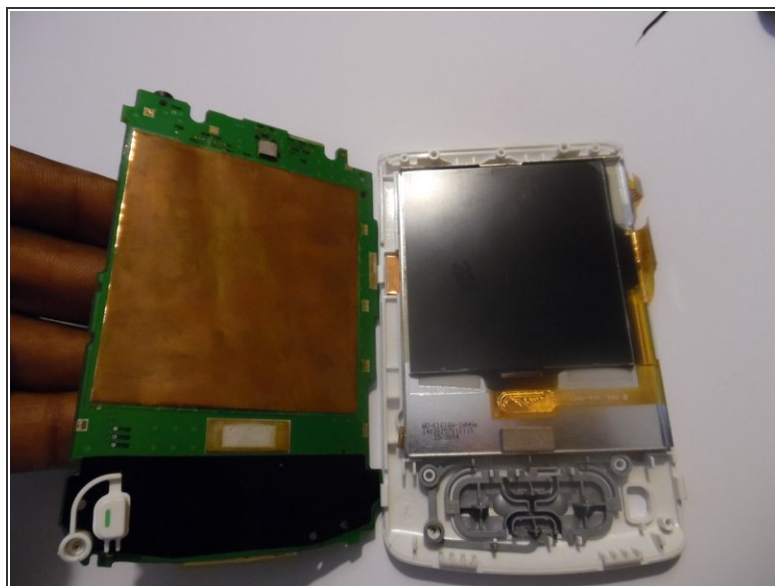
- ● Using tweezers, or something similar flip up the tab, releasing the wires located under the flap

Step 3



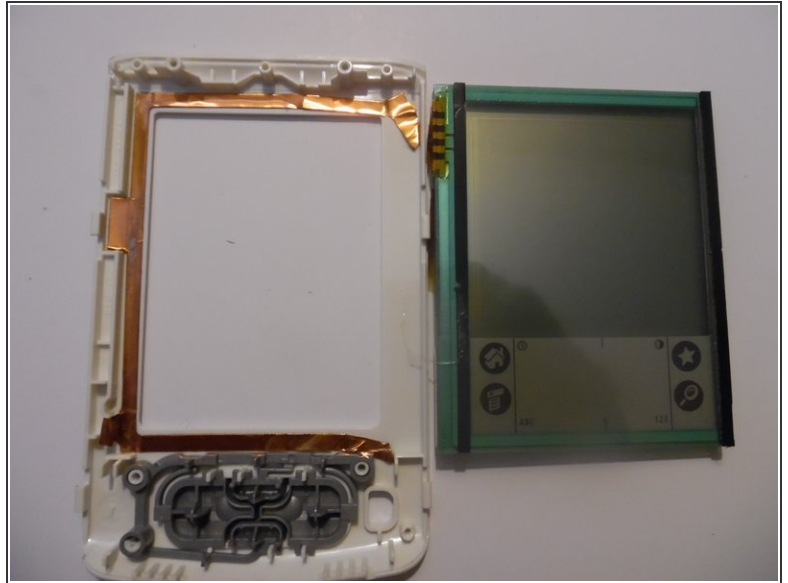
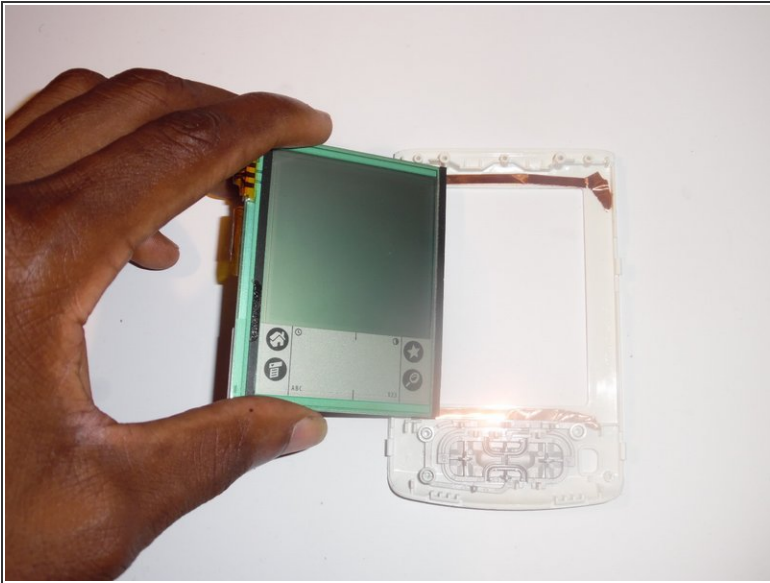
- Using a Philips head screwdriver, remove the two screws located at the bottom of the board.

Step 4



- Gently, remove the motherboard by lifting up exposing the screen.

Step 5



- Carefully, remove the screen from the device by lifting up and replacing with a new one.

To reassemble your device, follow these instructions in reverse order.