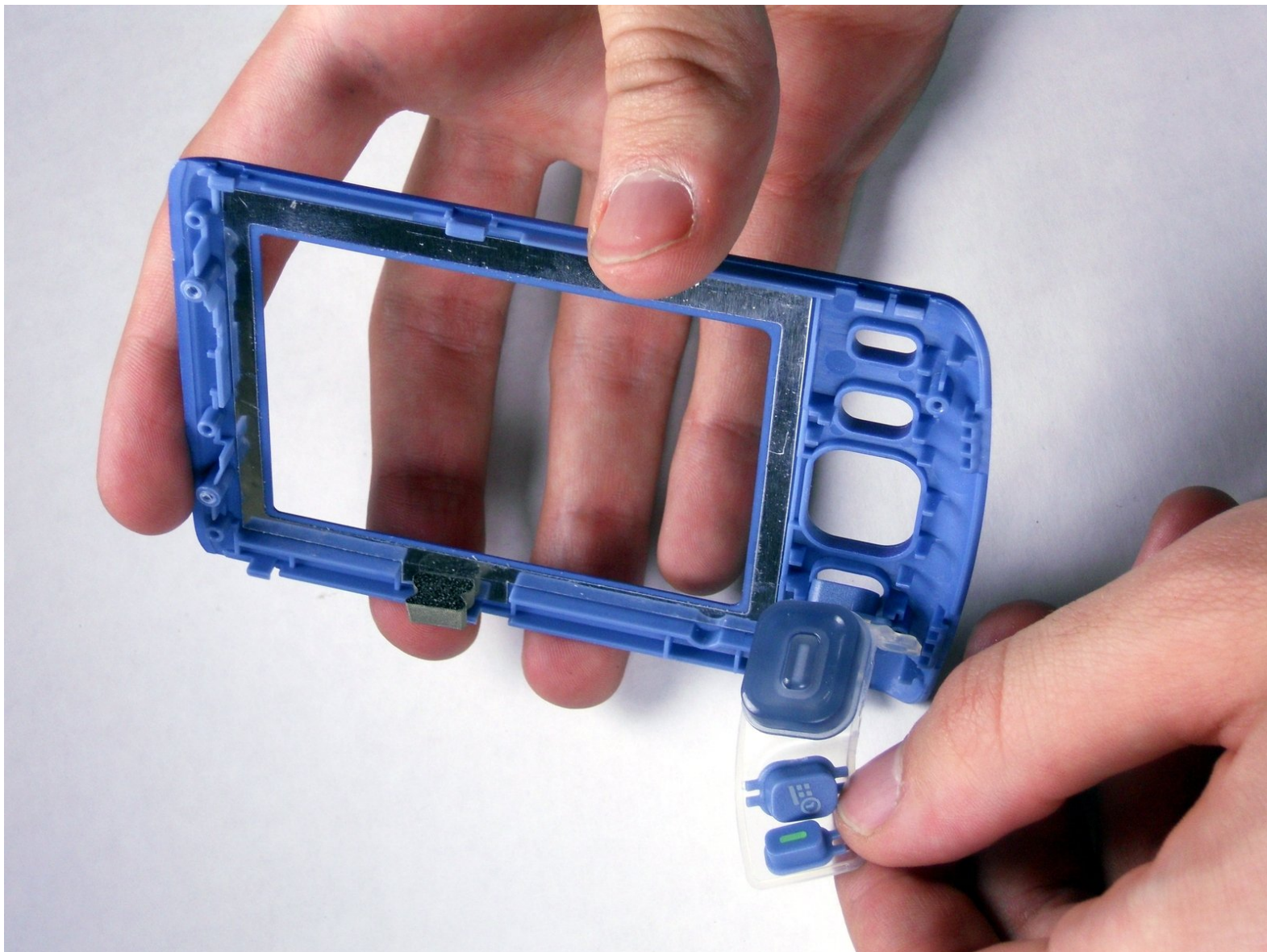




Palm Zire 31 Keys Replacement

Written By: Gabe





TOOLS:

- [Phillips #00 Screwdriver](#) (1)
- [Spudger](#) (1)
- [T6 Torx Screwdriver](#) (1)

Step 1 — Case



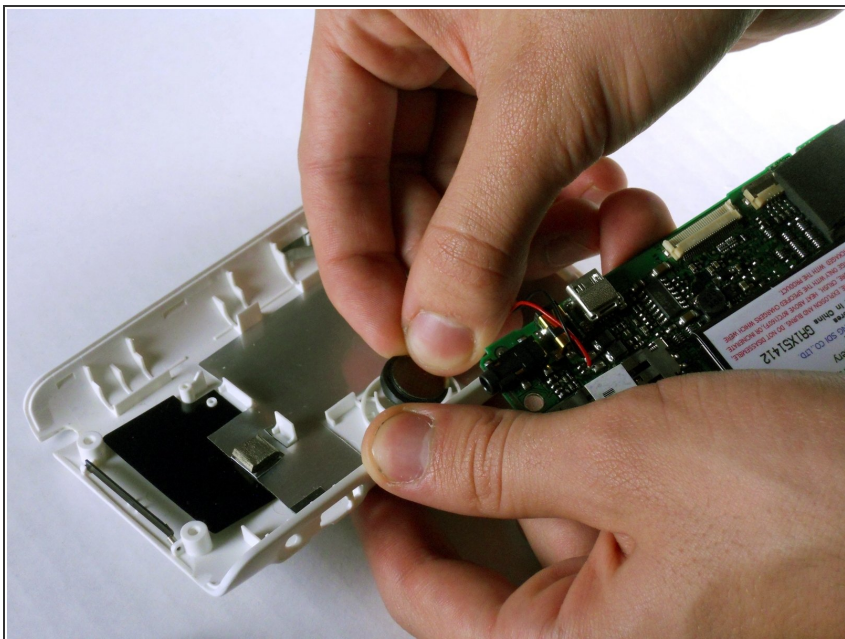
- Unscrew the two 7.35mm Torx T6 screws.

Step 2



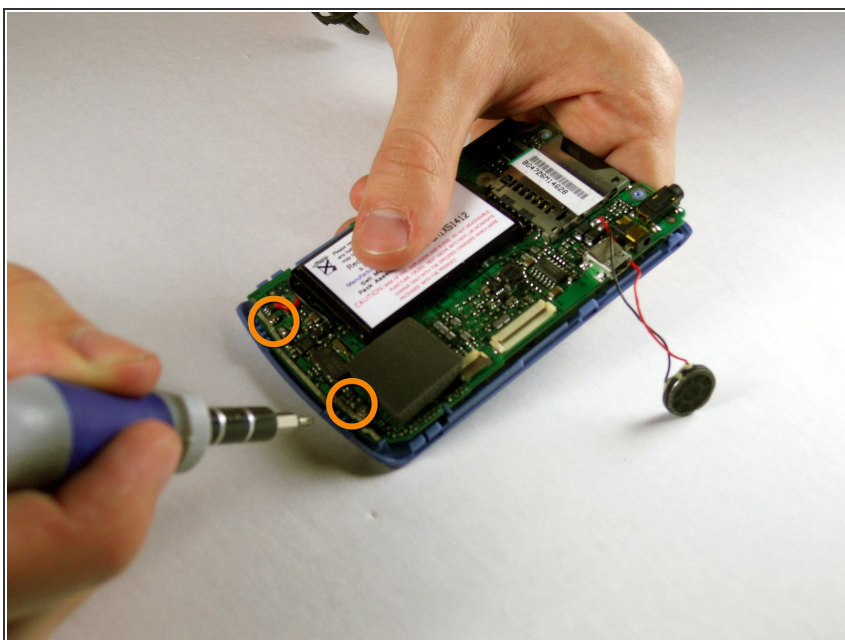
- Using the flat end of the spudger, carefully pry the black cover on the top from the blue front cover.

Step 3



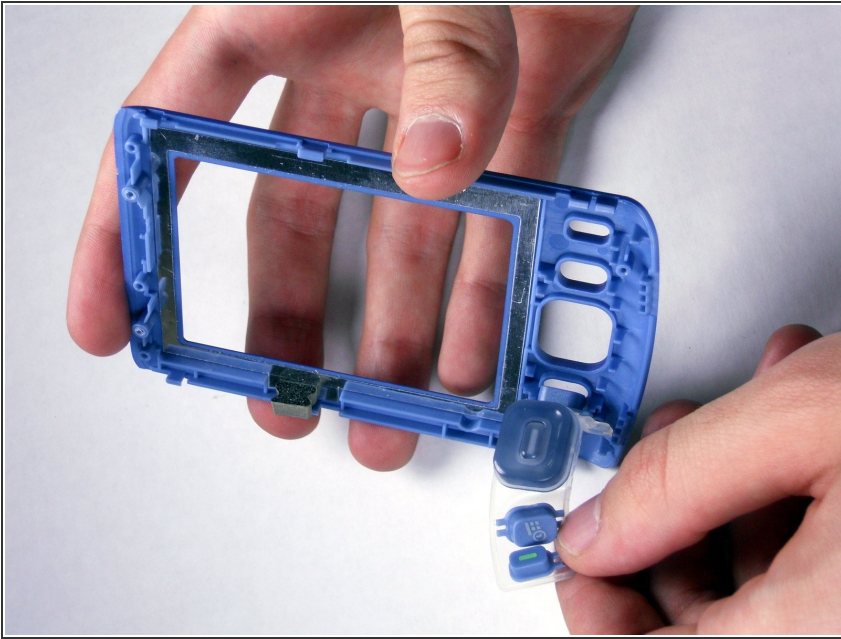
- Carefully remove the speaker from the back white cover by just pulling it gently. It is glued on.

Step 4



- Unscrew the #00 5.75mm Phillips screws from the bottom of the motherboard. The front blue panel should fall right off.

Step 5 — Keys



- The blue keys will either come off with the blue front case, or stay on the motherboard.

To reassemble your device, follow these instructions in reverse order.