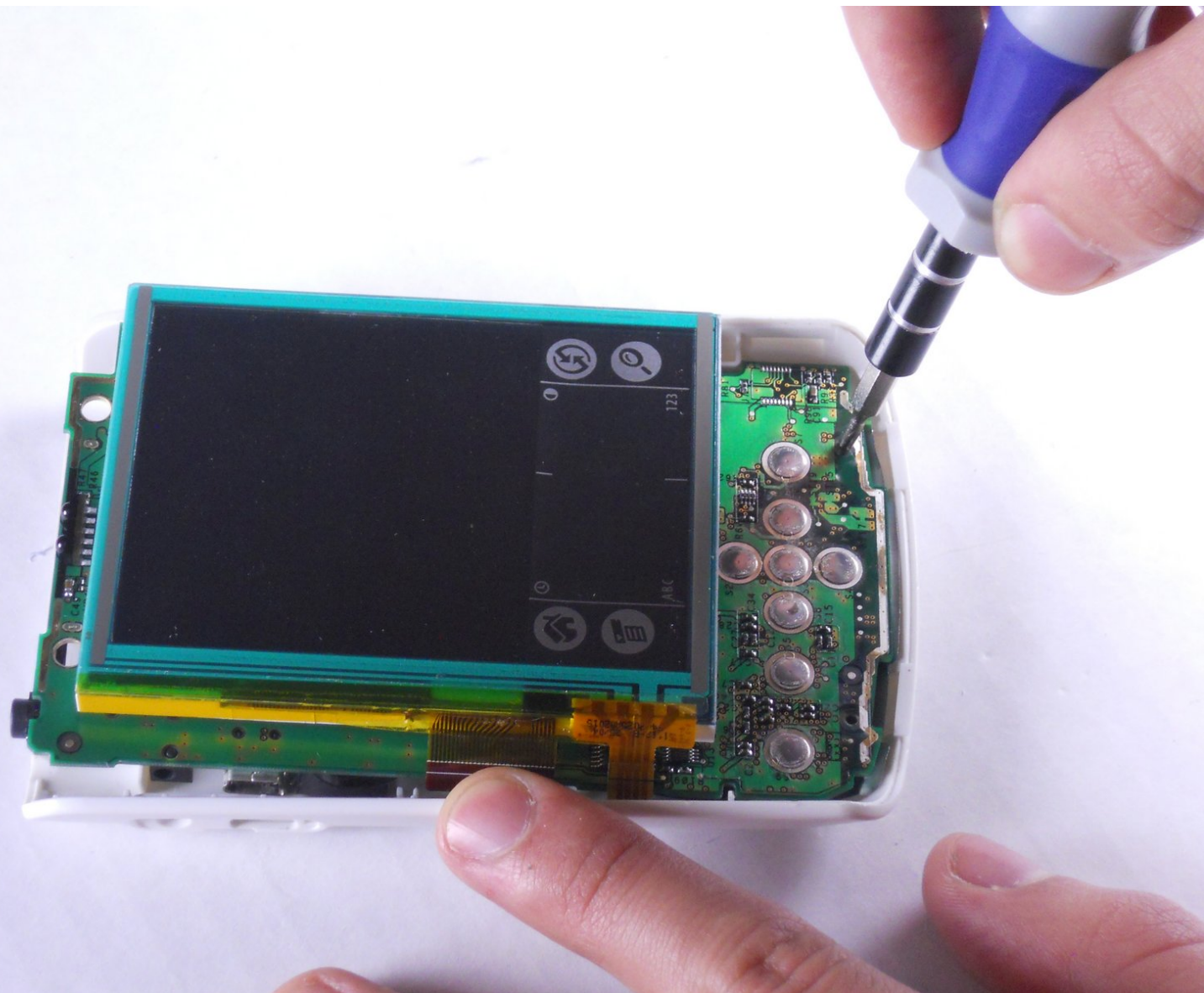




# Palm Zire 31 Motherboard Replacement

This guide will tell the user how to replace a motherboard with a new one.

Written By: Gabe





## TOOLS:

- [Phillips #00 Screwdriver](#) (1)
- [Spudger](#) (1)
- [T6 Torx Screwdriver](#) (1)
- [Desoldering Braid](#) (1)
- [Solder](#) (1)
- [Soldering Iron](#) (1)

## Step 1 — Case



- Unscrew the two 7.35mm Torx T6 screws.

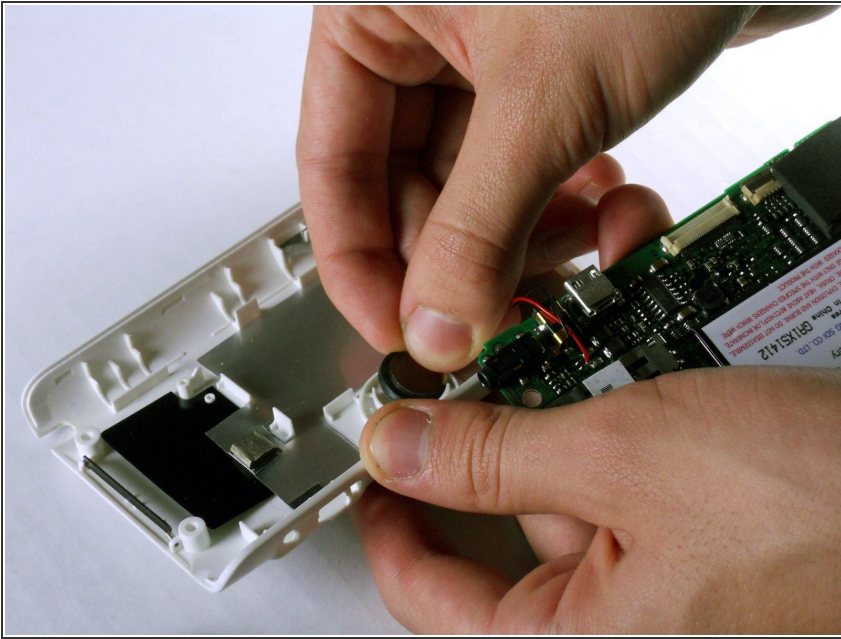
## Step 2



- Using the flat end of the spudger, carefully pry the black cover on the top from the blue front cover.

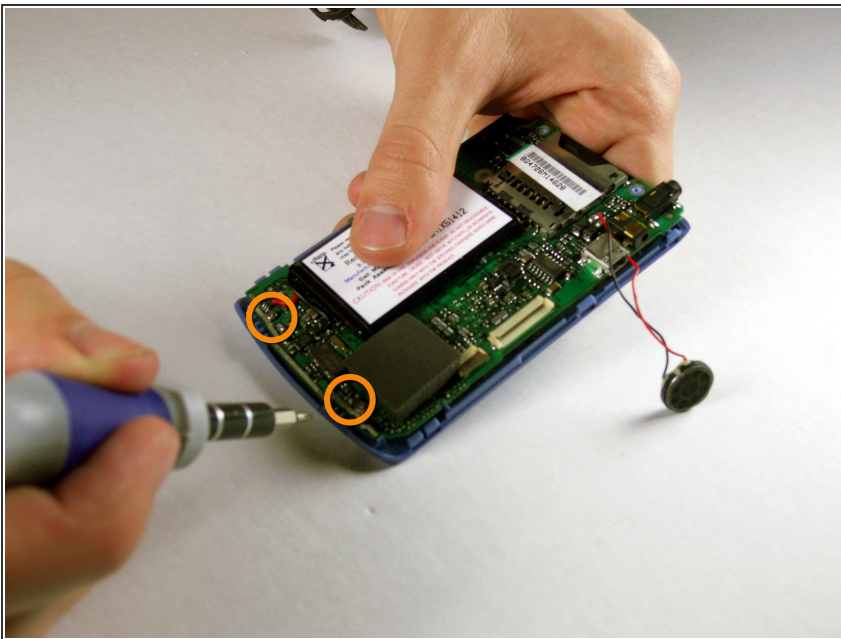


### Step 3



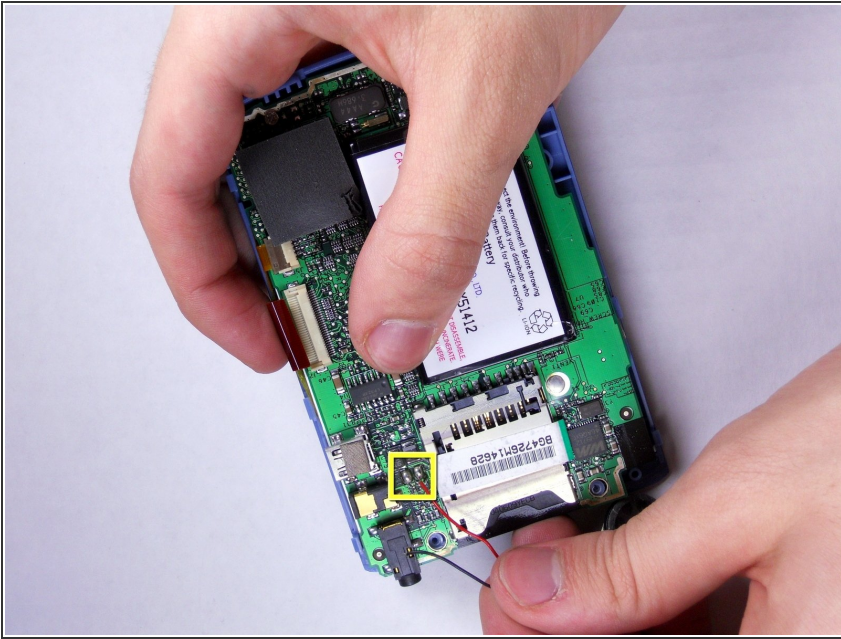
- Carefully remove the speaker from the back white cover by just pulling it gently. It is glued on.

### Step 4



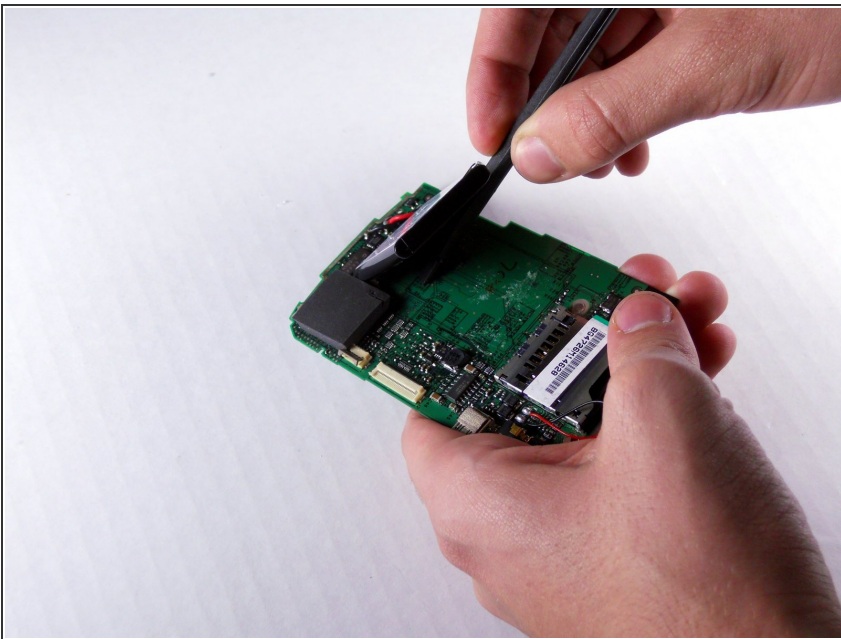
- Unscrew the #00 5.75mm Phillips screws from the bottom of the motherboard. The front blue panel should fall right off.

## Step 5 — Speaker



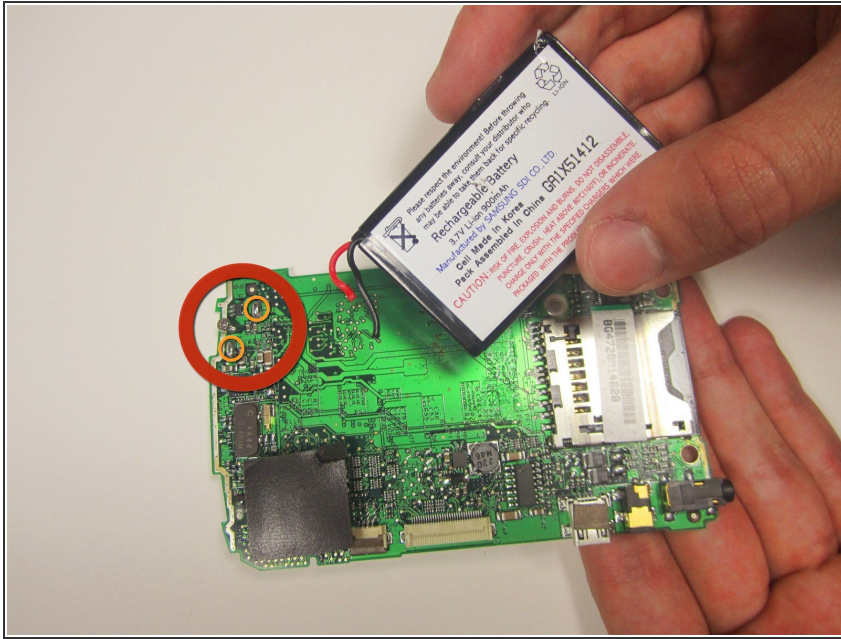
- ⚠ The soldering iron heats up leads, wires, and everything else it touches that is metal. Leaving it on too long may damage the board or burn you.
- Desolder the speaker wires and solder the new speaker in its place.
- ☑ The black and red wires are connected to the two solder bulbs in the yellow box.

## Step 6 — Battery



- Using the spudger, pry the battery from where it is glued from the motherboard and observe that the leads are soldered on.

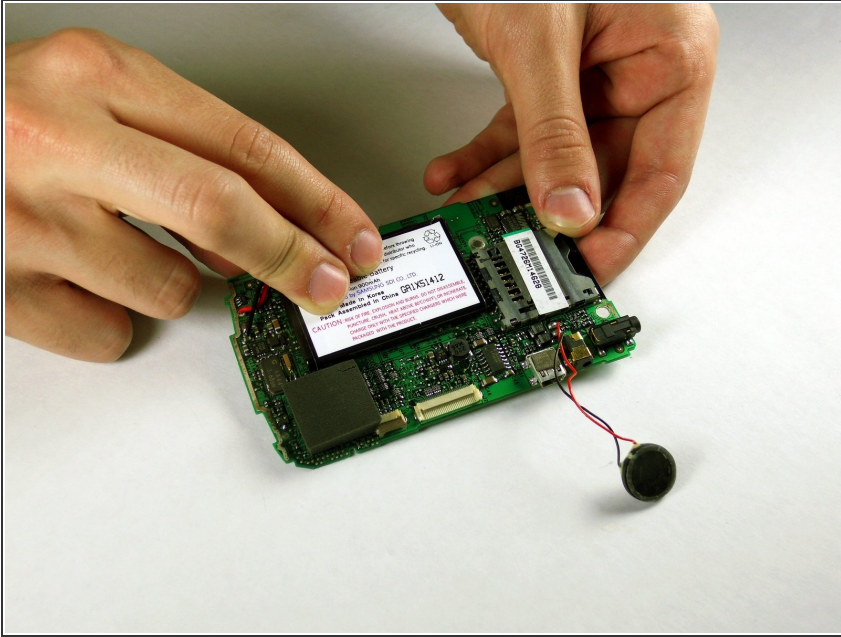
## Step 7



- Heating up the soldering iron properly, place the wick against the solder bulbs and heat the solder until the solder wick sucks up the solder.
- ☑ Be careful to not leave the soldering iron on the board too long as you may remove the copper leads or damage the motherboard.
- Solder the new battery's leads to the motherboard by taking the heated iron and heating the exposed wires of the leads and placing the solder in contact with the leads so the solder heats up and flows onto the leads.
- ⚠ Pull away the heat immediately once the solder has flowed and let the board cool to avoid damage to the board (or burns on your hand).

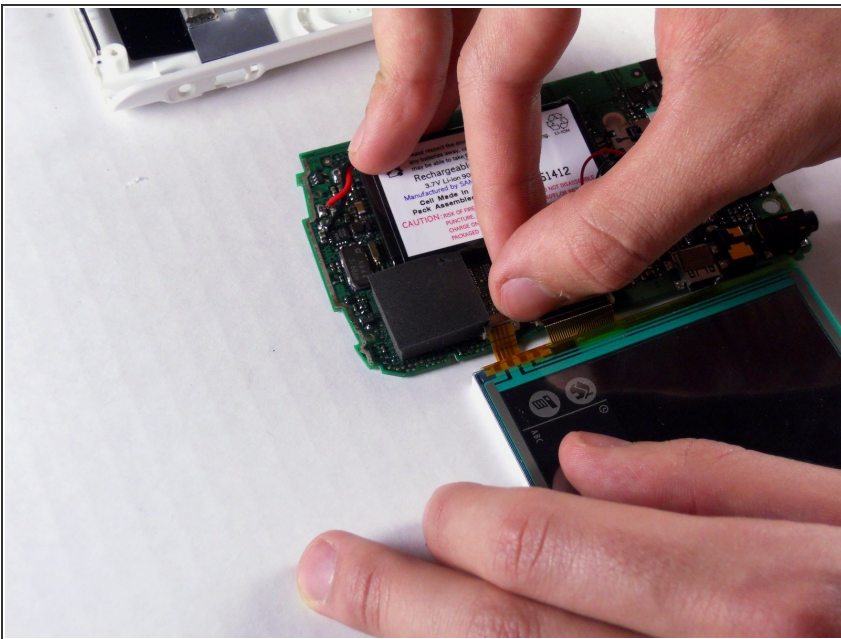


## Step 8



- Place the battery back on the board gently.
- ☑ The glue on the board should still stick, and you will want to be sure its exactly where it was or else the device will not reassemble properly.

## Step 9 — Screen



- Carefully pull back the brown cable holders and separate the screen from the motherboard.

To reassemble your device, follow these instructions in reverse order.