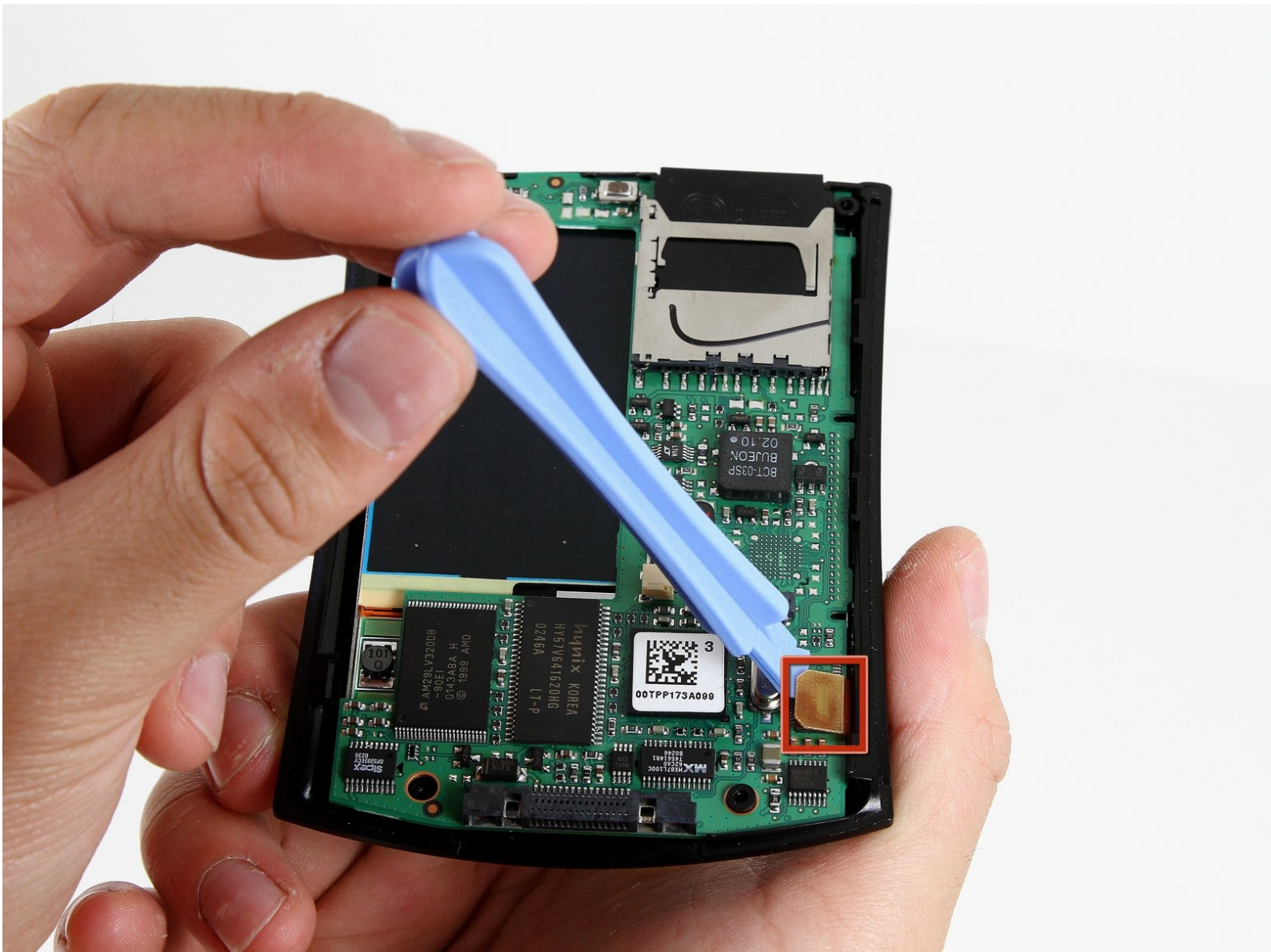




Palm m500 Motherboard Replacement

This guide will detail how to disassemble the device and replace the motherboard.

Written By: Miles Johnson



INTRODUCTION

Before you begin disassembly, be sure to have the necessary tools. You will need a Torx size T6 screwdriver, tweezers, and the device opening tool. You will be removing the stylus, the back panel, and the battery in order to access the motherboard.



TOOLS:

- [T6 Torx Screwdriver](#) (1)
 - [Tweezers](#) (1)
 - [iFixit Opening Tools](#) (1)
-

Step 1 — Back Panel



- Remove the stylus from the side of the PDA by sliding it upwards.

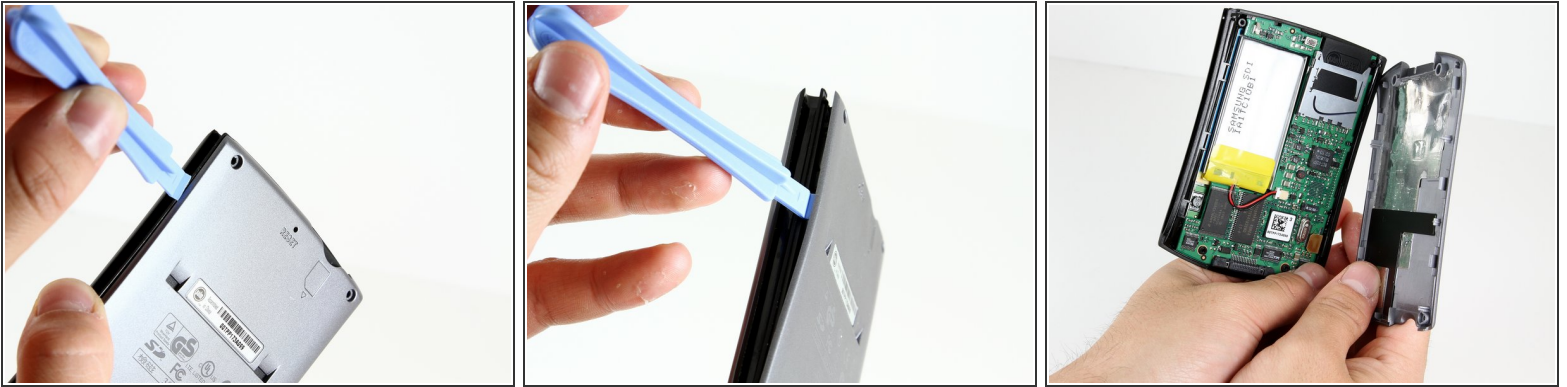
Step 2



- Remove the 4 screws from the corners of the back panel of the device using a size T6 Torx screwdriver.

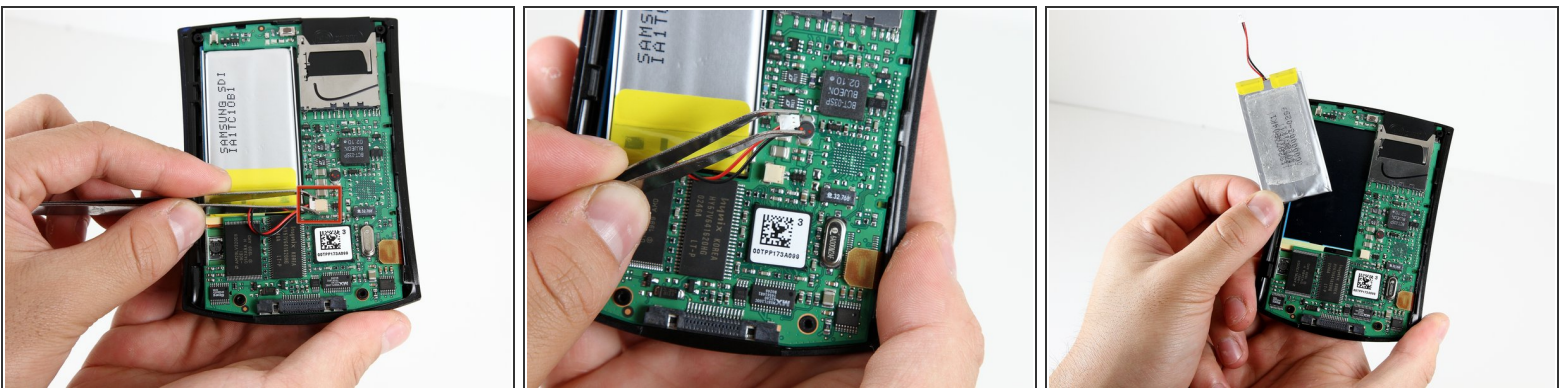
 Place screws in a plastic bag or another safe place.

Step 3



- Insert the edge of the plastic opening tool between the back panel and the black stylus holder.
- Carefully and forcefully pry the panels apart.

Step 4 — Battery



- Use tweezers to unplug the battery cable from the motherboard socket.
- Gently remove the battery from the motherboard using your thumb and forefinger to pull upwards.
- i** The battery may be difficult to remove because of light adhesive on the back. It may require some force to pry the battery away from the motherboard with your fingers.

Step 5 — Motherboard



- Use the plastic opening tool to pry the orange clamp away from the motherboard.
- Use the plastic opening tool at the bottom of the device to pry the motherboard away from the front plate.
- Gently and forcefully lift the motherboard away from the front plate by using your thumb and forefinger.

To reassemble your device, follow these instructions in reverse order.