



# PalmOne Zire 72 Battery Replacement

Written By: Michelle Medina







## TOOLS:

- [T5 Torx Screwdriver](#) (1)
- [Phillips #00 Screwdriver](#) (1)
- [Spudger](#) (1)



## Step 1 — Battery



- Using a T5 Torx screwdriver, unscrew the two 5mm screws located at the bottom of the device.

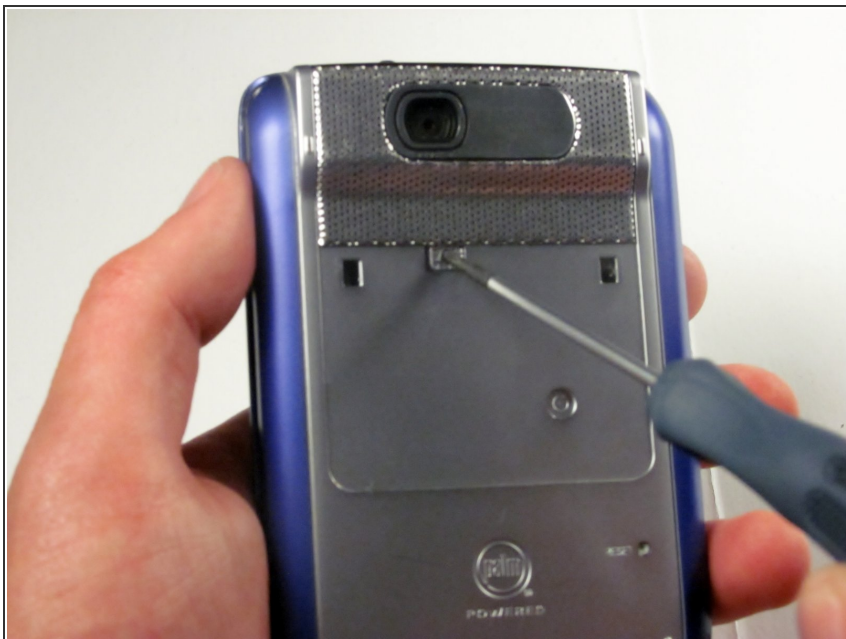
## Step 2



- Peel back the adhesive label below the camera on the rear to reveal a hidden screw.
- ⓘ If you peel the entire adhesive off, two holes underneath will be exposed to future damage. Try to preserve the label to reapply later.
- **Alternate Procedure:**  
Underneath the camera, feel for a depression and cut the sticker directly above the depression to reveal the hidden screw.



### Step 3



- Use a #00 Philips screwdriver to remove the 2.5mm hidden screw.

### Step 4



- Use either end of a a spudger to carefully pry off the camera lens mesh cover.



## Step 5



- Using the #00 Phillips screwdriver, remove the two 9mm screws on the top corners of the device.



## Step 6




- Spin the phone around so that the headphone jack is facing you.
- Run the flat end of the spudger around the entire edge of the device to gently pry the case off.
- ⚠ Gently remove the case to avoid damaging it. Do not try to force the case open.
- ⓘ The L shaped latches located on the bottom of the device make it hard to remove the case; you should run the spudger around the device's edges again if you are having problems.



## Step 7



- Remove the cover by lifting it from right to left.
  - This should be similar to the action of the opening of a book.

 A connector may tear if this is not done carefully. The connector is a brown film connecting the motherboard to the case.

## Step 8






- Lift the control pad buttons off of the motherboard.

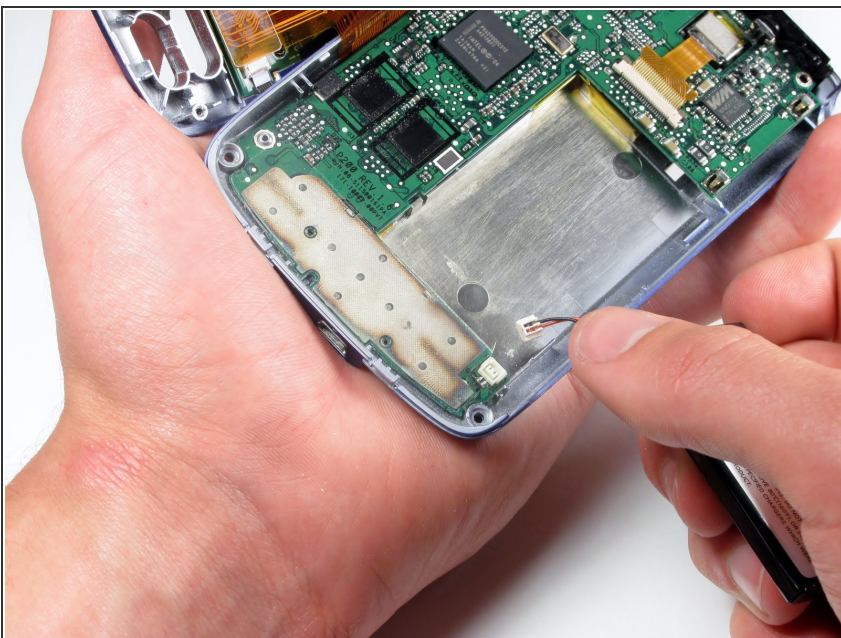


## Step 9



- Wedge the flat end of the spudger underneath the battery and gently pry it out.
-  Be cautious of the red and black wires on the battery, which may rip easily.
-  The battery may have adhesive holding it to the device.
-  The battery connector may rip if the battery is not removed carefully.

## Step 10



- Gently disconnect the white component connecting the battery to the motherboard.
- ⓘ The connector should be pulled upward.

To reassemble your device, follow these instructions in reverse order.