



Panasonic AG-1300 Teardown

A simple tear down of a Panasonic AG-1300

Written By: Herson Calderon





TOOLS:

- [Phillips #1 Screwdriver](#) (1)
-

Step 1 — Tool



- The only tool needed is a medium sized screw driver

Step 2 — Step 1: Removing the cover



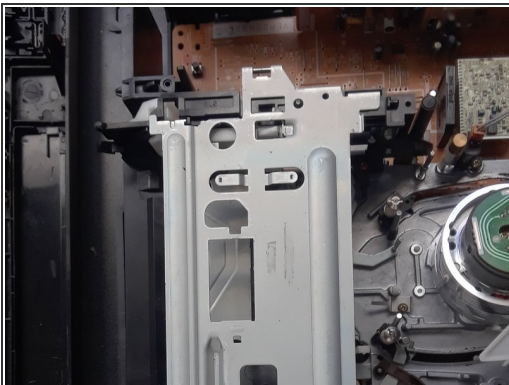
- The first step is to unscrew both screws on both sides of the VCR

Step 3 — Step2:Removing front plastic cover



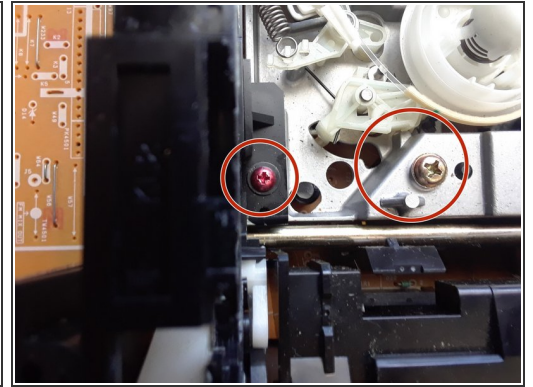
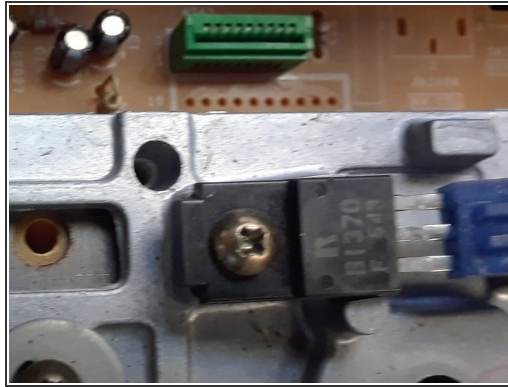
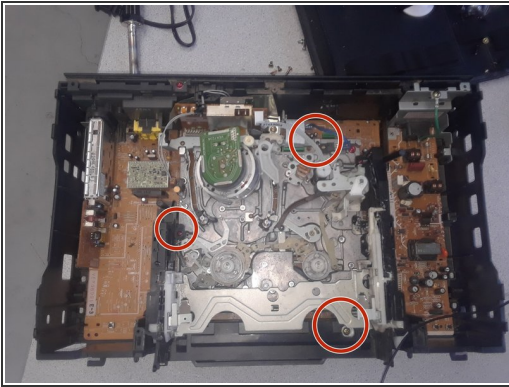
- After removing the cover you must unclip all the clips of the front paneling

Step 4 — Step 3 : Removing the metal plate



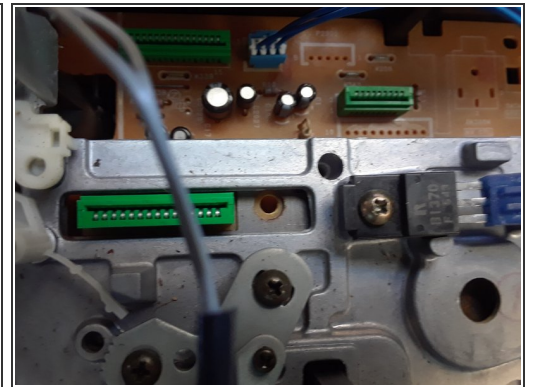
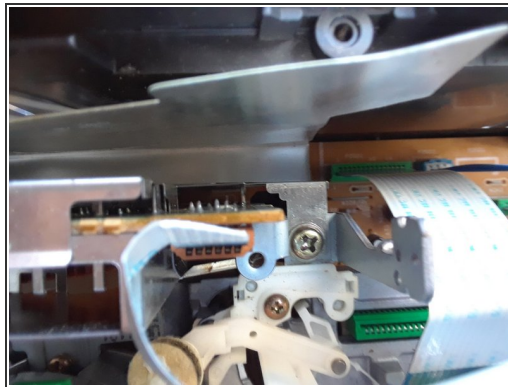
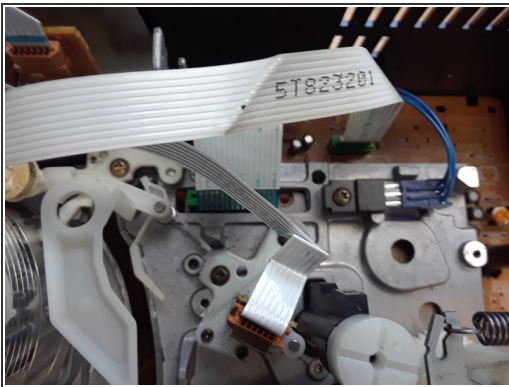
- Remove this metal plate by unclipping the clips on its sides.

Step 5 — Step 4: Removing main metal plate



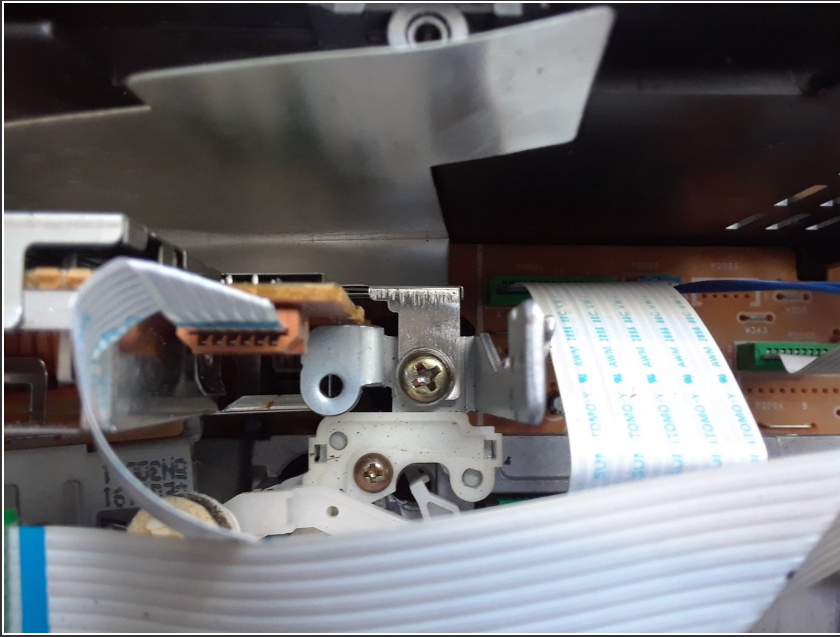
- Unscrew all of these screws to remove the main plate

Step 6 — Step 4 : Continued



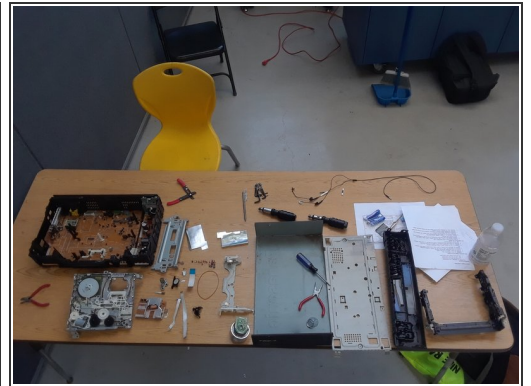
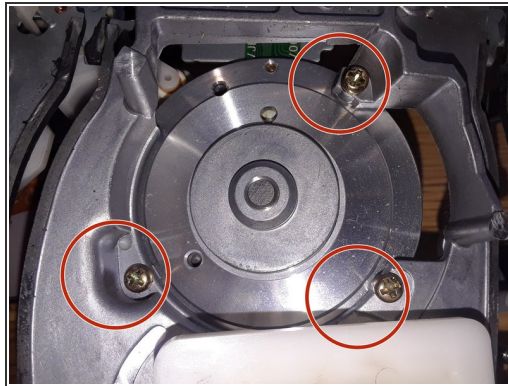
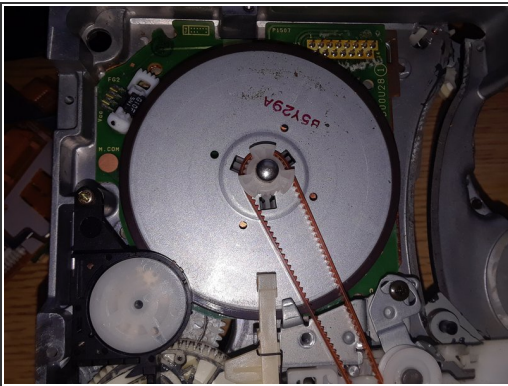
- before removing the plate disconnect these three wires to preserve the functions of the VCR.

Step 7 — Step 4 : Continued



- Remove this one screw

Step 8 — Step 5 FINAL step: Removing the VCR reader



- Remove the main plate and then flip it over to reveal the motor
- Now unscrew all of these screws and there you go you just tore down a VCR to its major components
- And now all your major components should be spread out like this